

VAMITTOOLS Vasúti ōrház – 729-es t pus



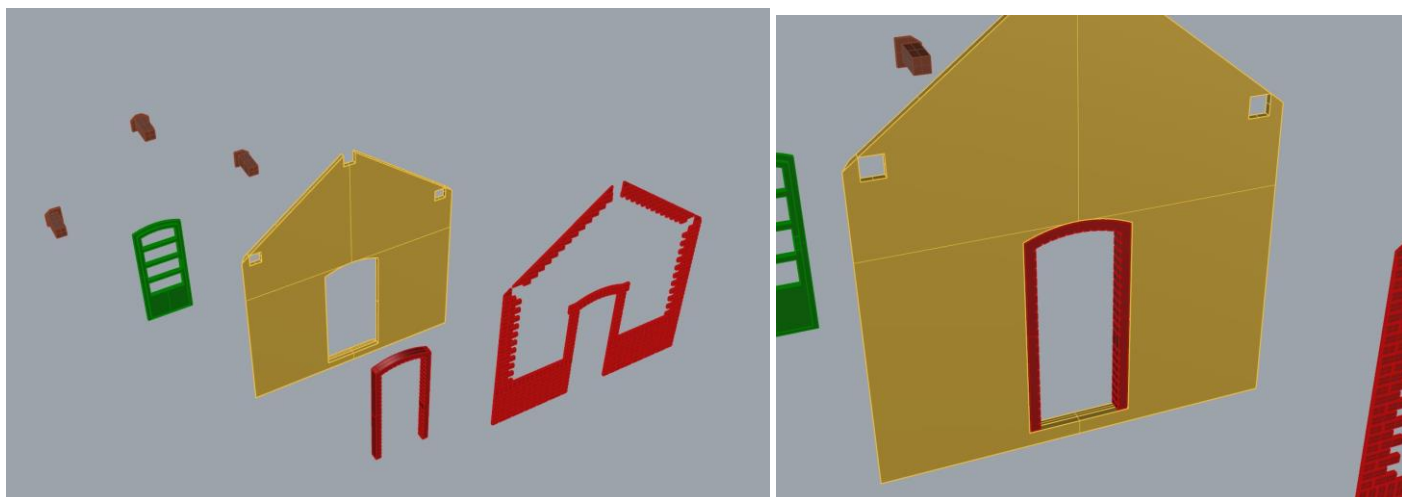
Maketragaszt t (Rewell stb.) NE használjanak term keinkhez, mert az old szere k rt tehet az egyes alkot elemekben (f leg a v konyakban)! A k vetkez  ragaszt kat ajánljuk: k k tubusos  j Technokol Rapid (acetonmentes), k tkomponenses ragaszt  (Epoxy Rapid, Araldite stb.). B vebb információ a ragasztással, fest ssel stb.-vel kapcsolatban a minden term k oldal n elérhet  által nos t j koztat ban van!

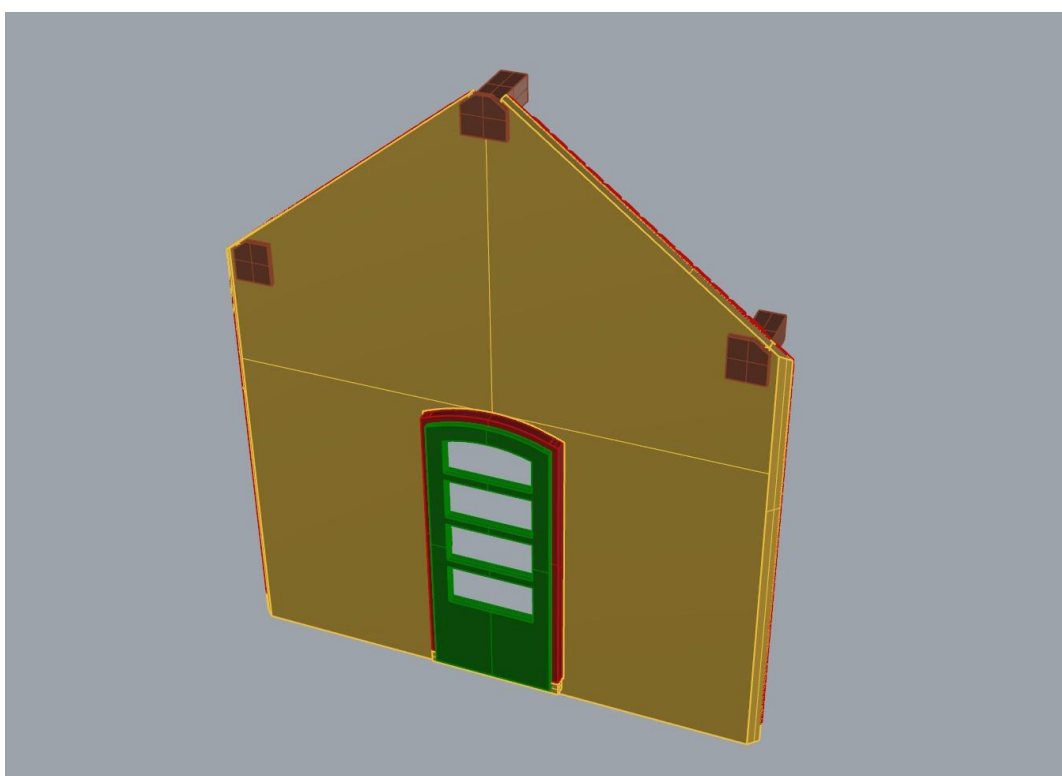
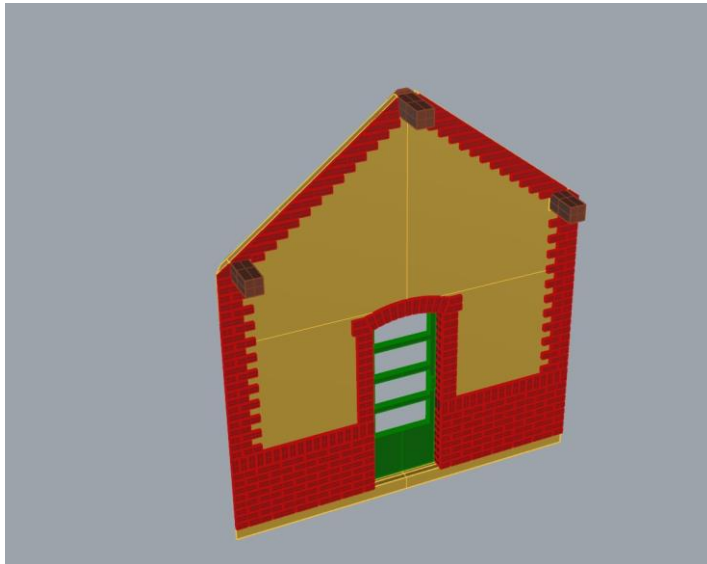
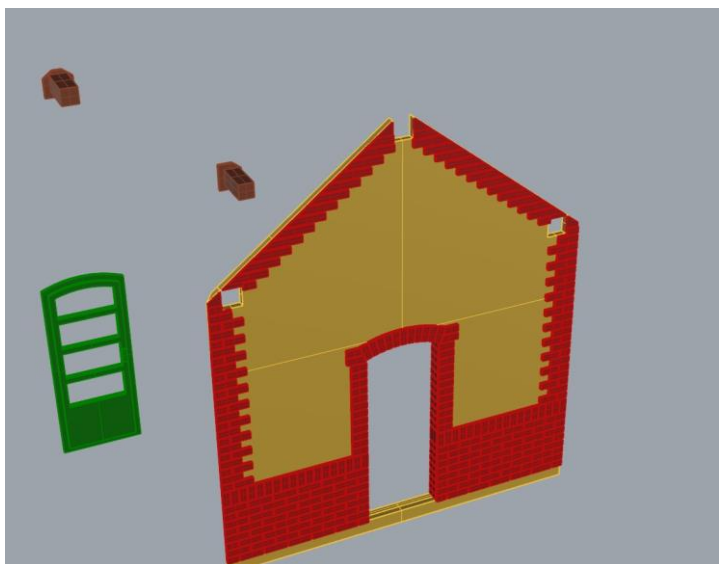
Do not use model adhesive (e.g. Rewell), this may damage the product. The recommended adhesives: two component adhesive (Epoxy Rapid, Araldite etc.), superglue (Loctite) or  j Technokol Rapid (blue). For more information about glueing, painting etc. please read the General product informations, which can be found on the page of the product.

Az  sszerak st az oldalak k l n-k l n t rt n   sszerak s val kezdj k. Minden falr szn l a sima (f nyes) oldal n z kifel ! K vess k a k peken l that  l p seket. C lszer  az  p let bels  oldal ra karton maszkol kat tenni, hogy a f ny ne vil g tsa  t az  p let falait. A karton maszkol kat az  tmutat  k l n nem jelzi!

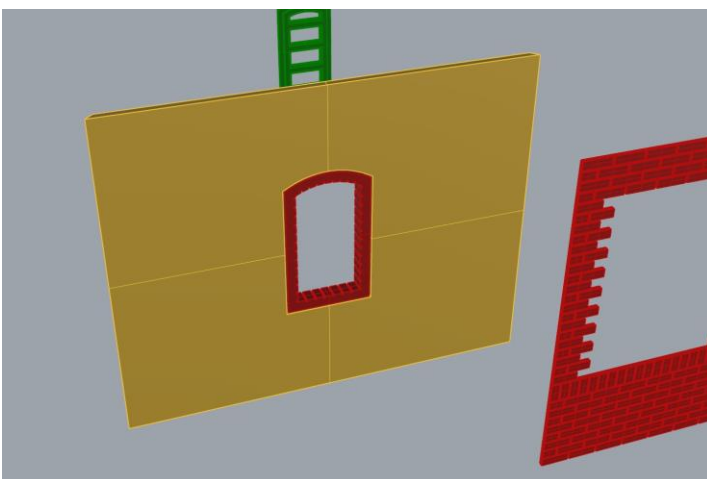
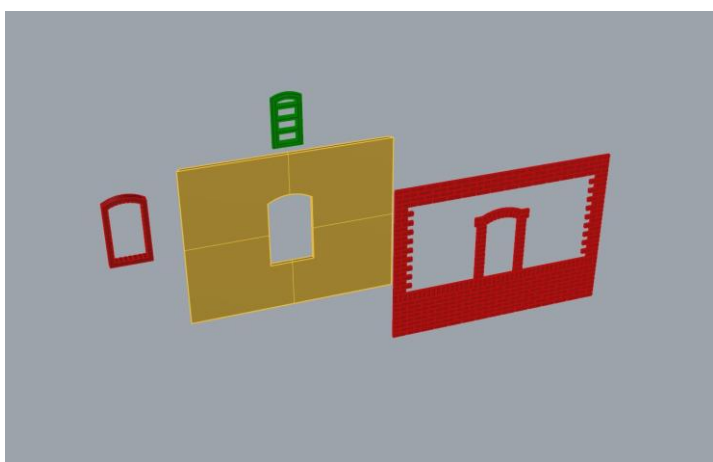
Let's start with the sides of the building. The smooth (shiny) side of each walls faces outwards. Follow the steps shown in the pictures. Recommended to use cardboard paper at the inner side of the walls, to avoid the light doesn't shine through of them. The guide doesn't show this, so you must make it by yourself.

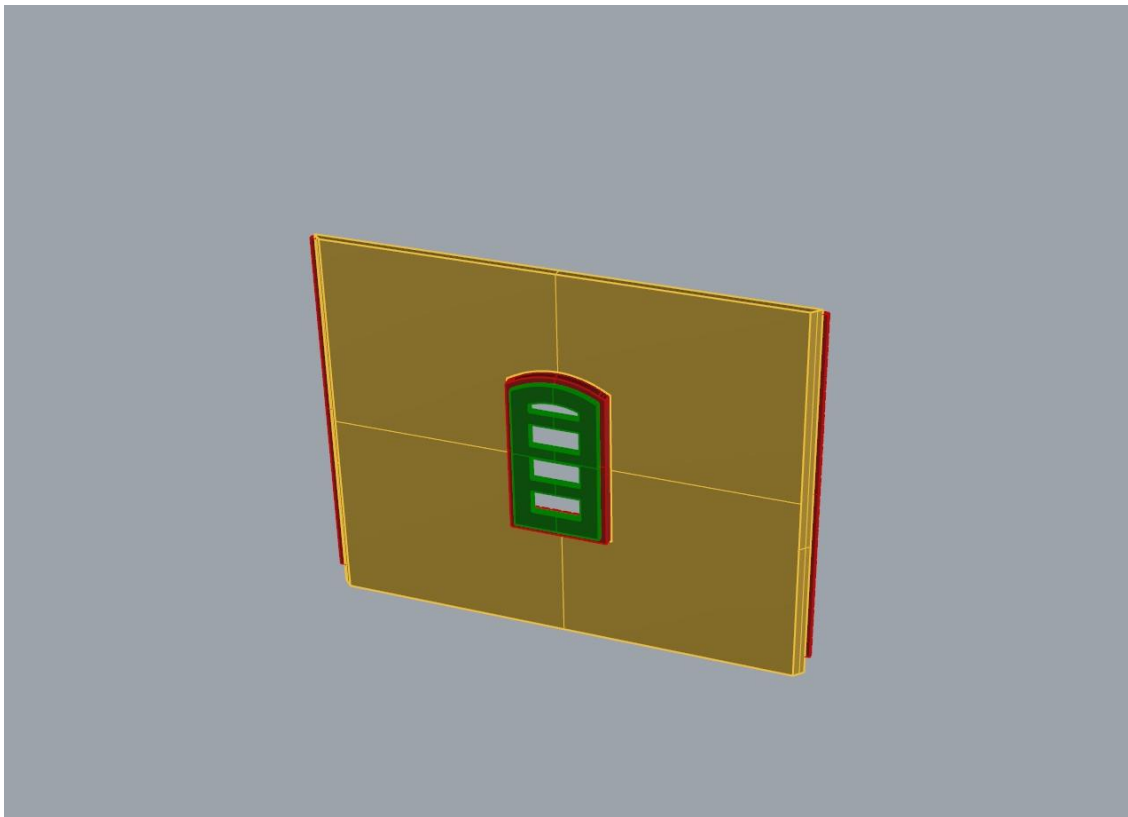
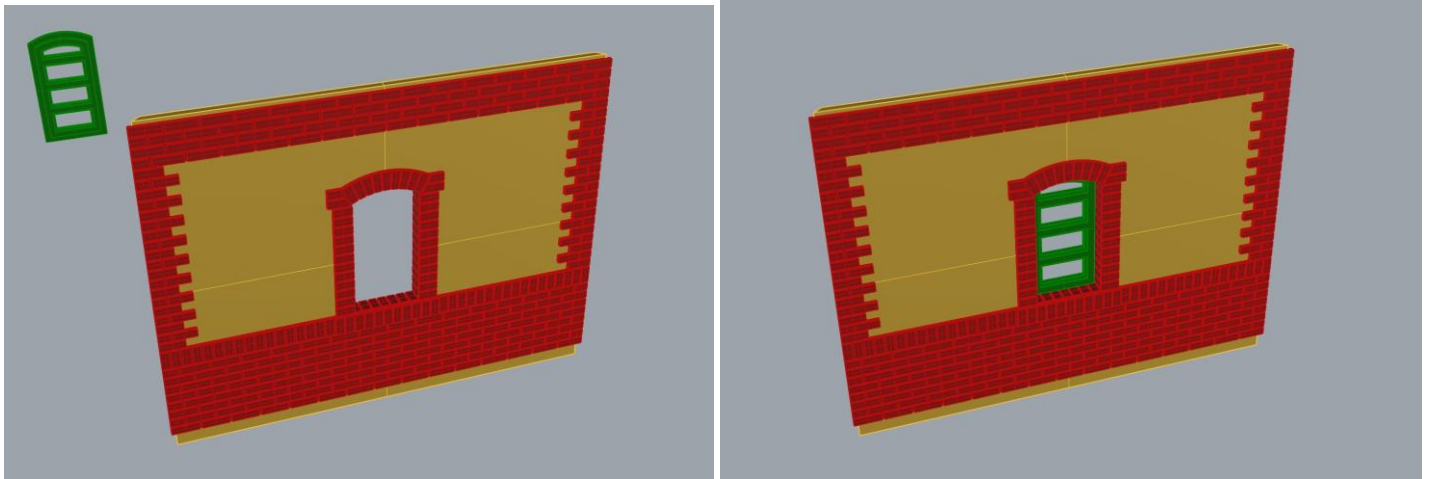
1. oldal: (1. side)



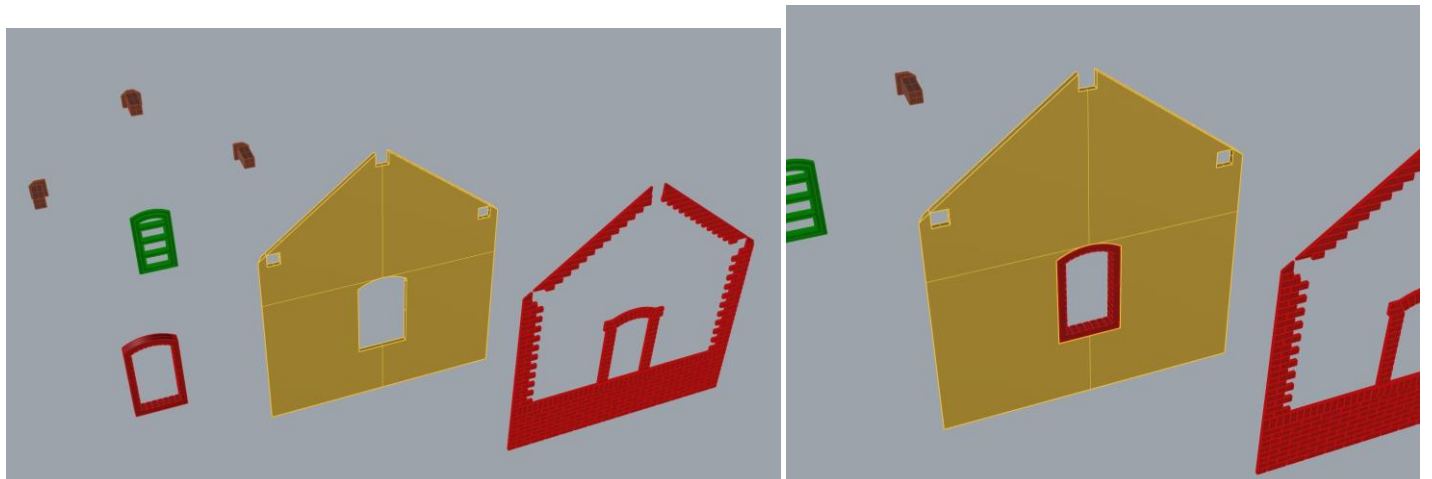


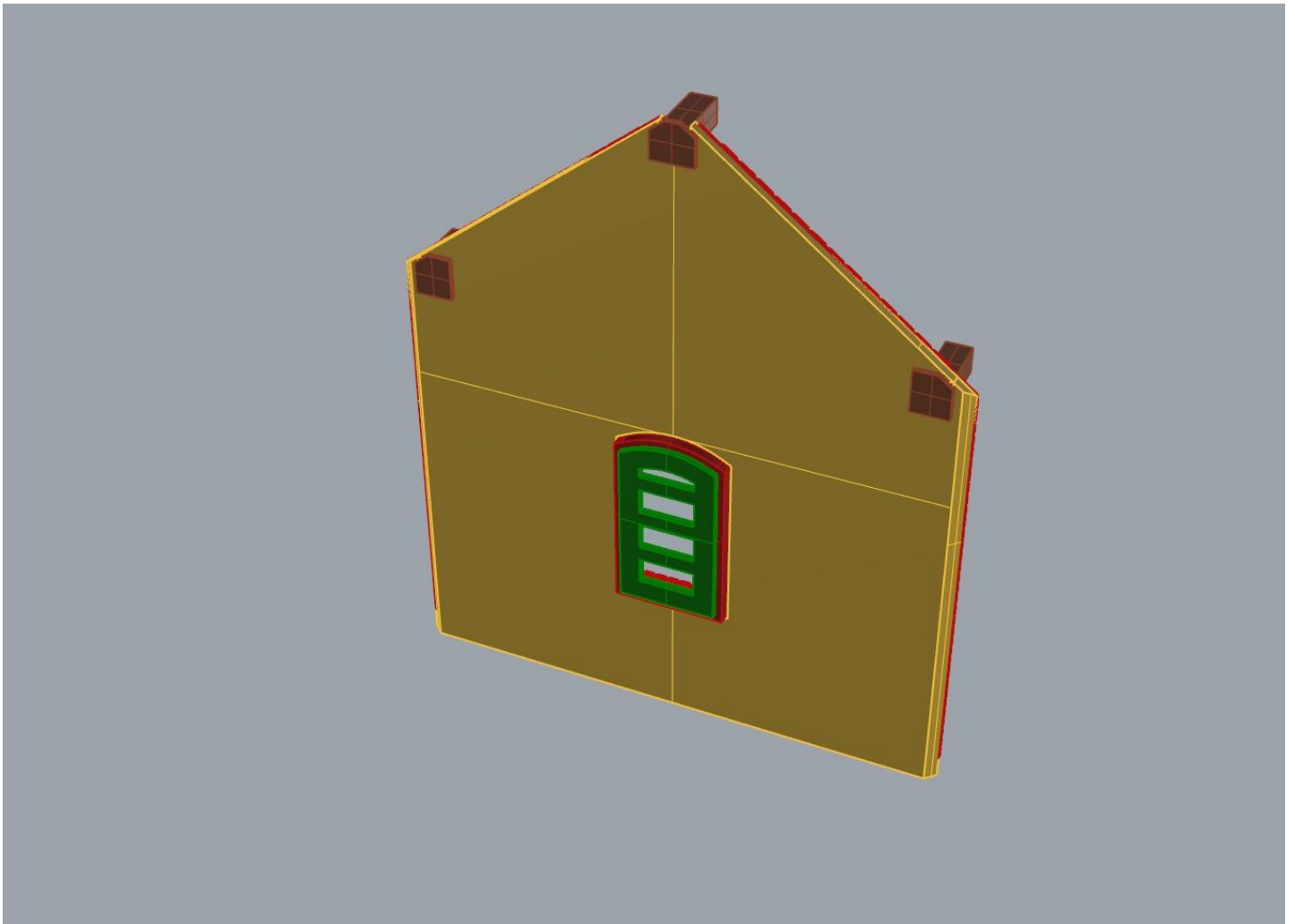
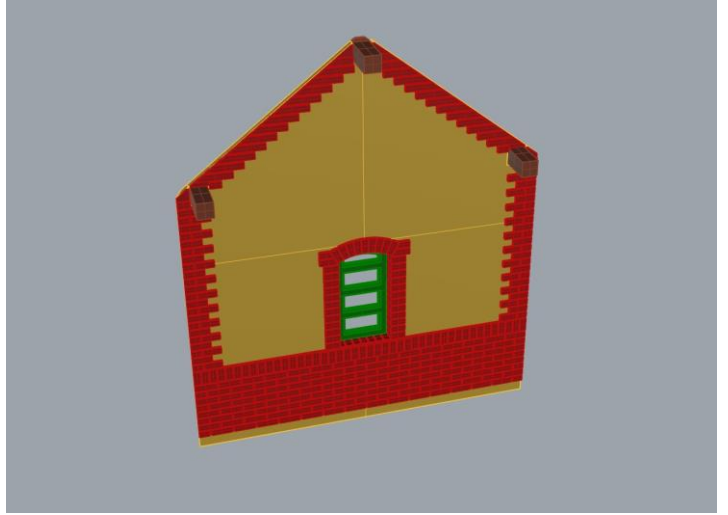
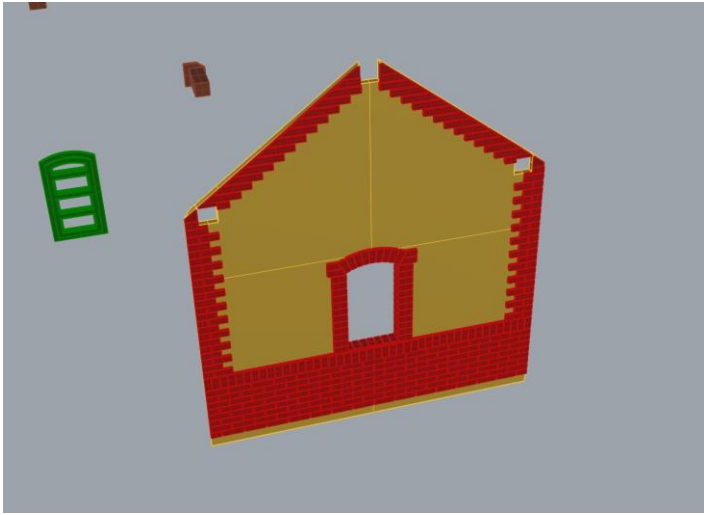
2. oldal: (2. side)





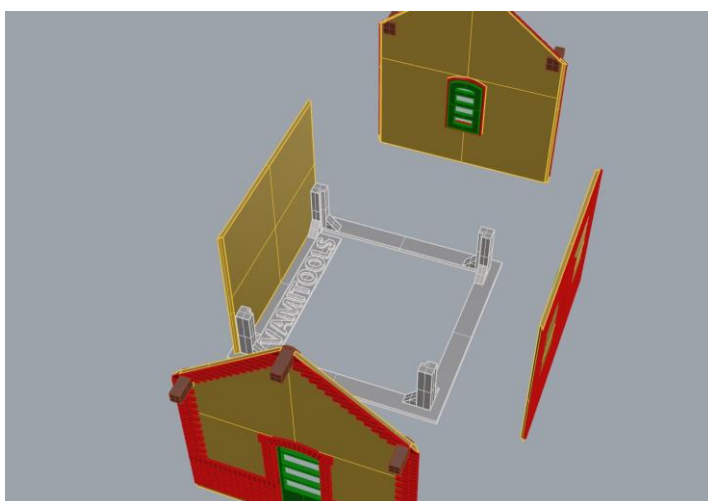
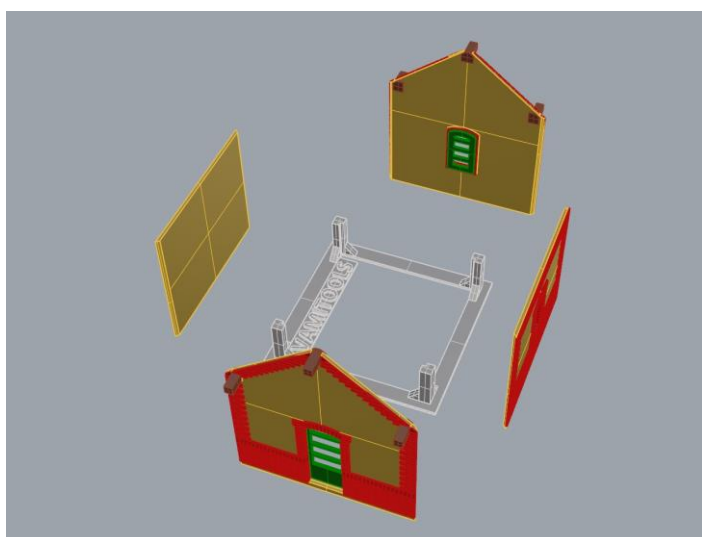
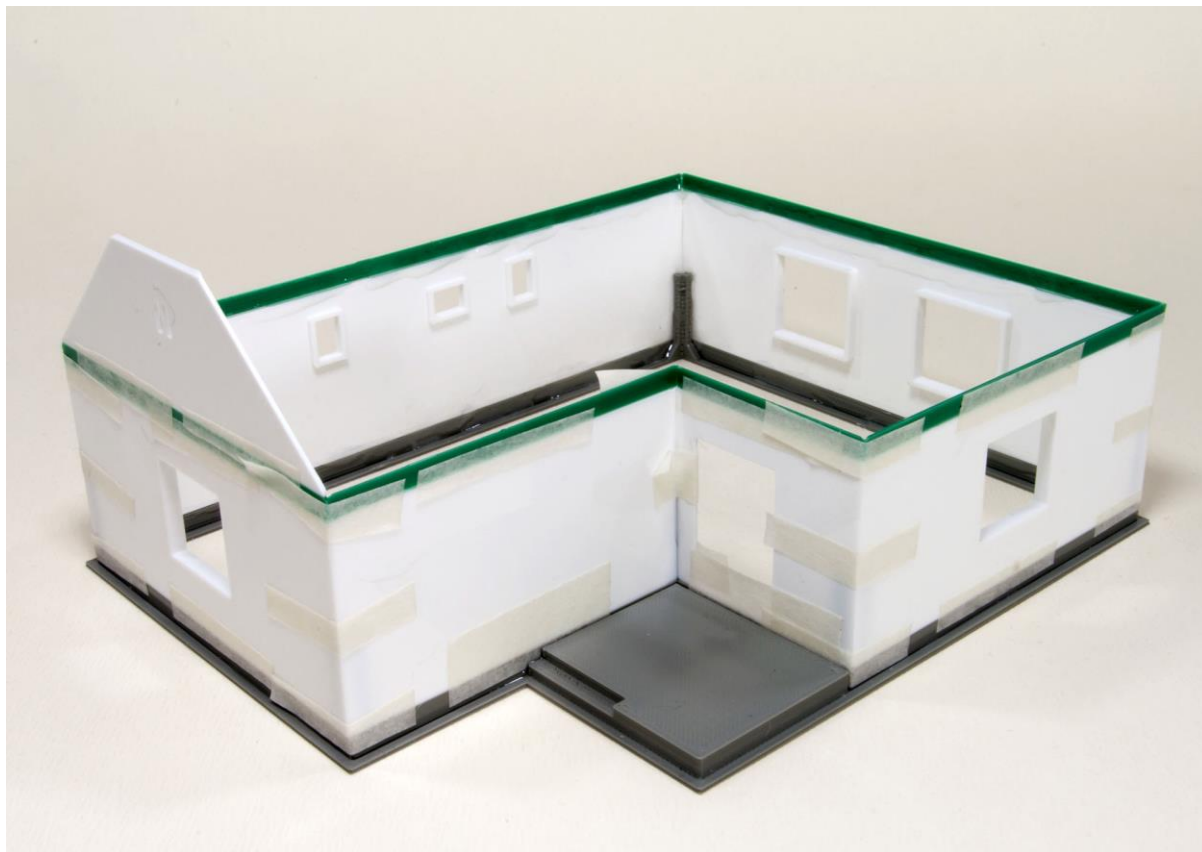
3. oldal: (3. side)

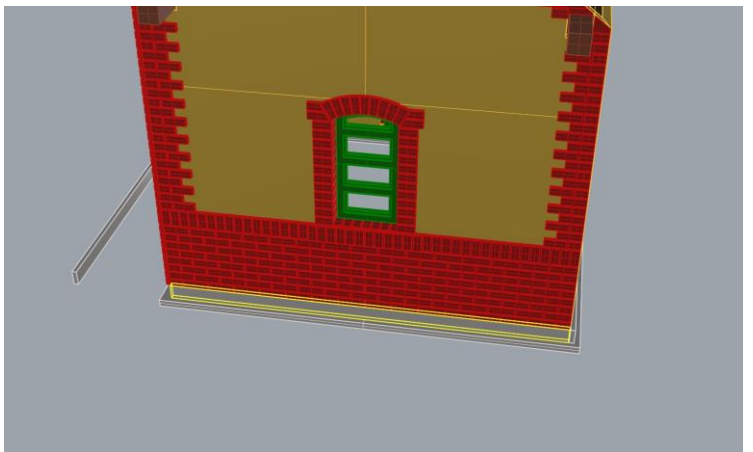
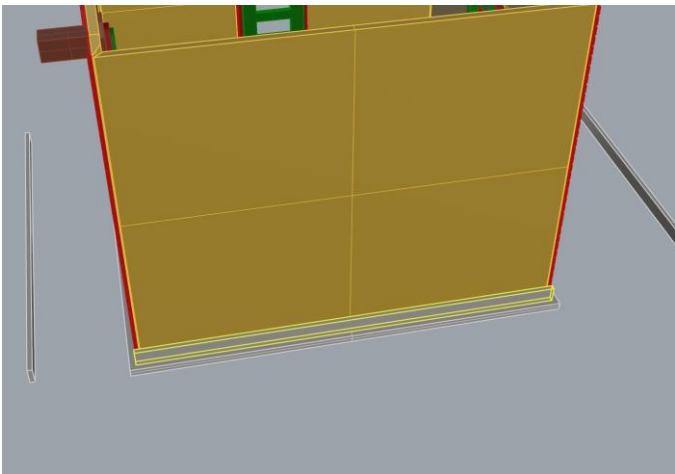
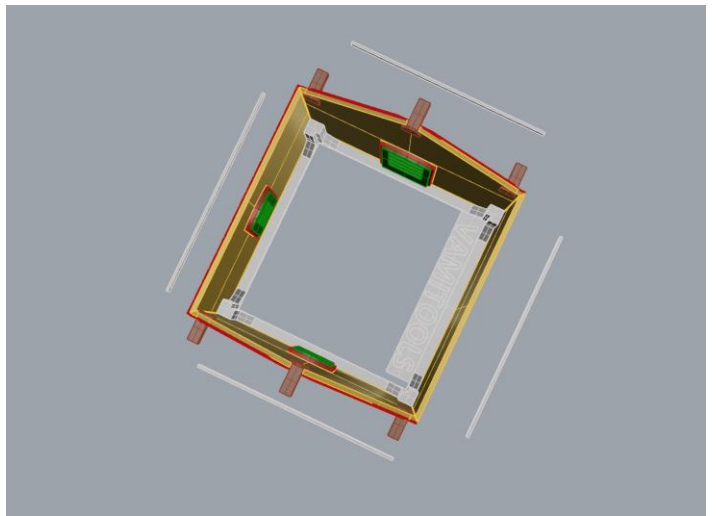
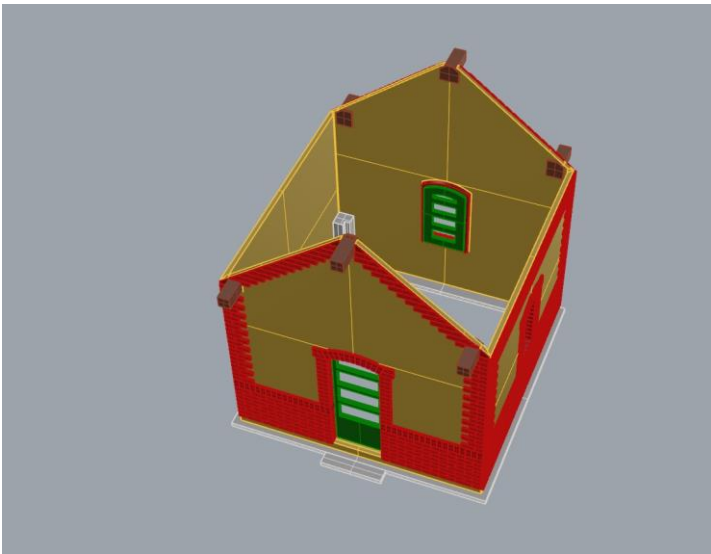
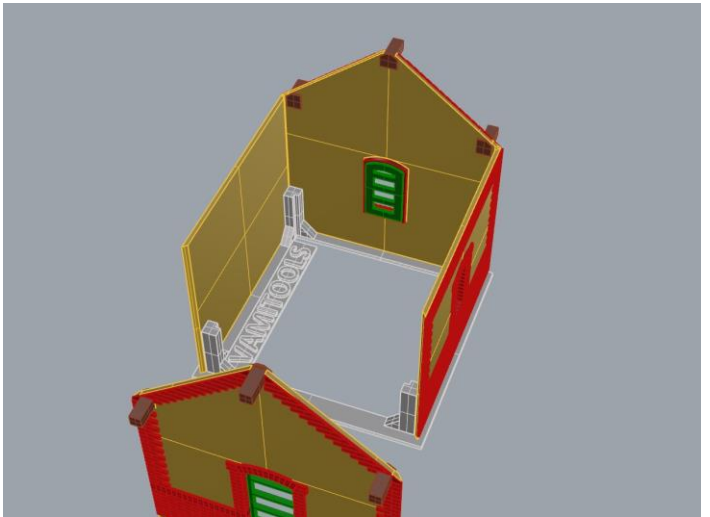
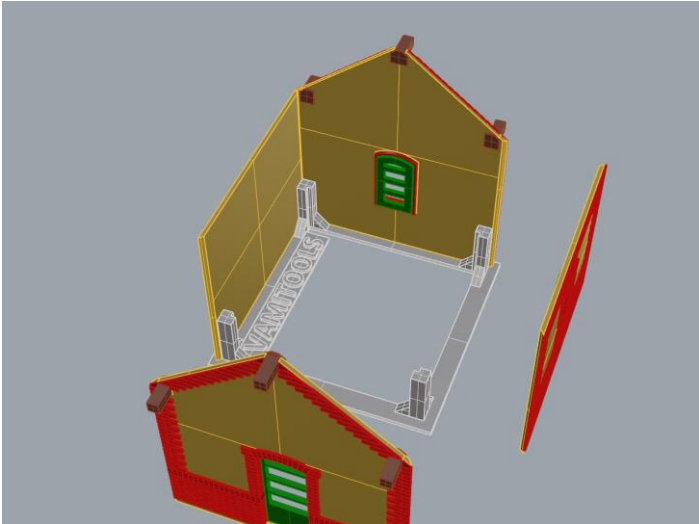


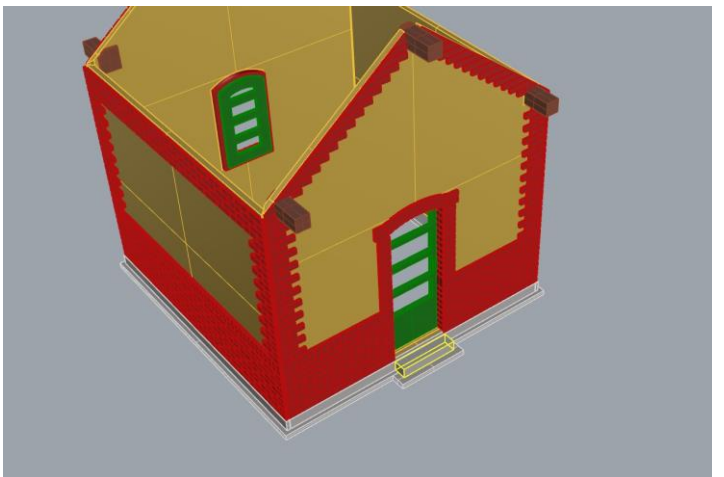
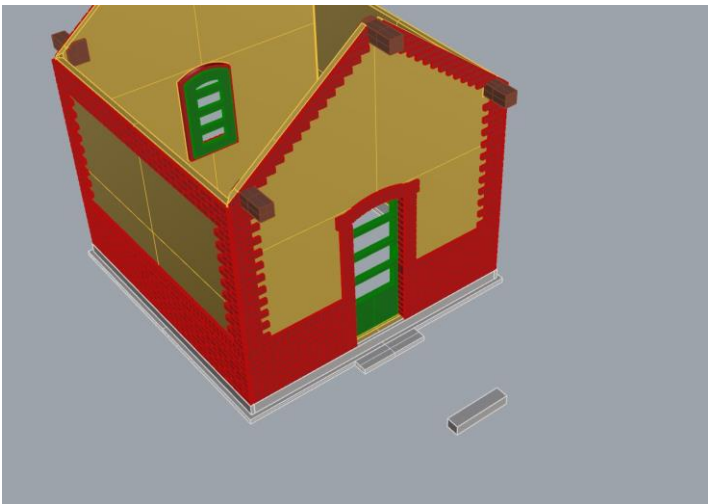
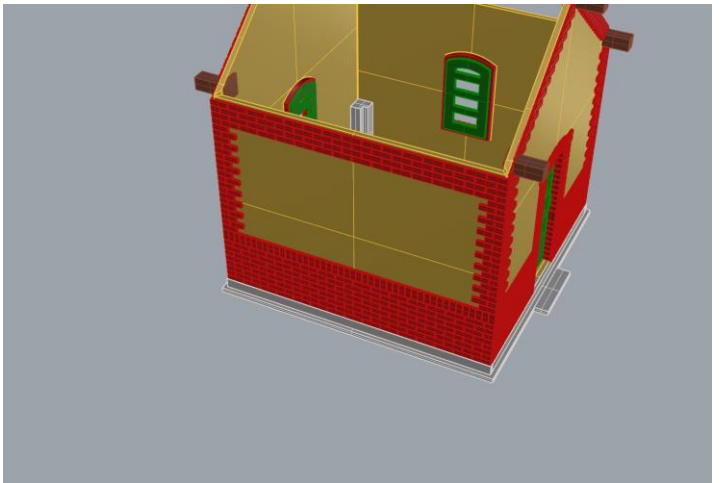
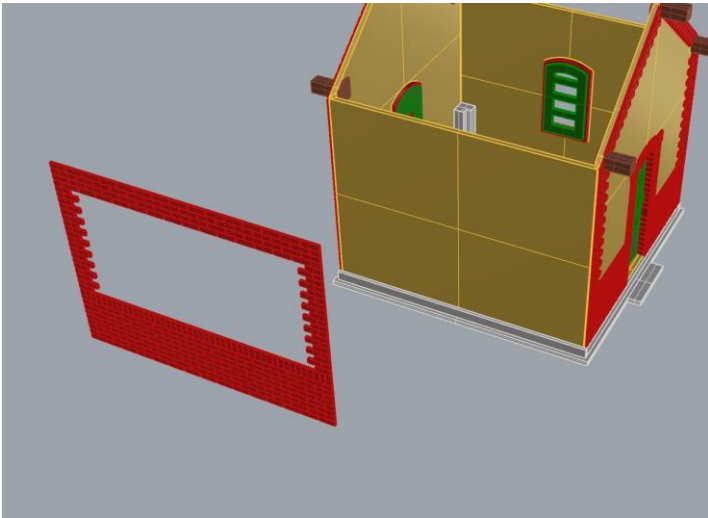
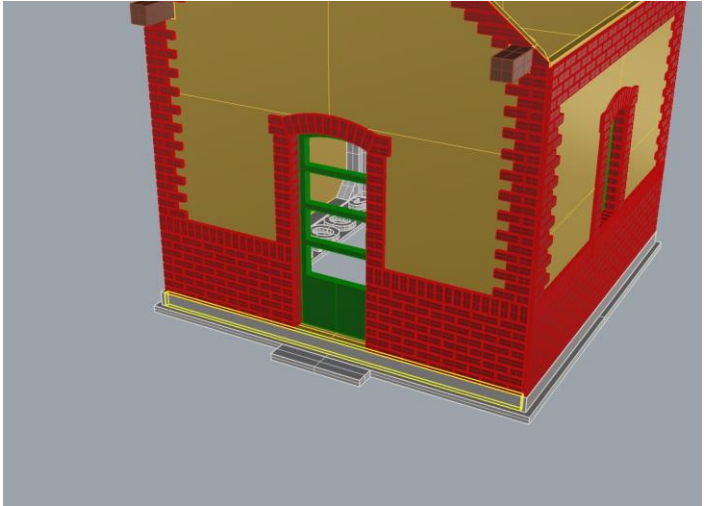
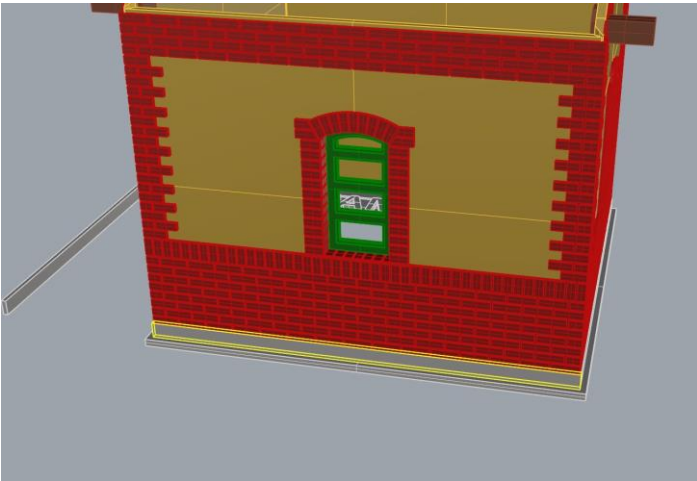


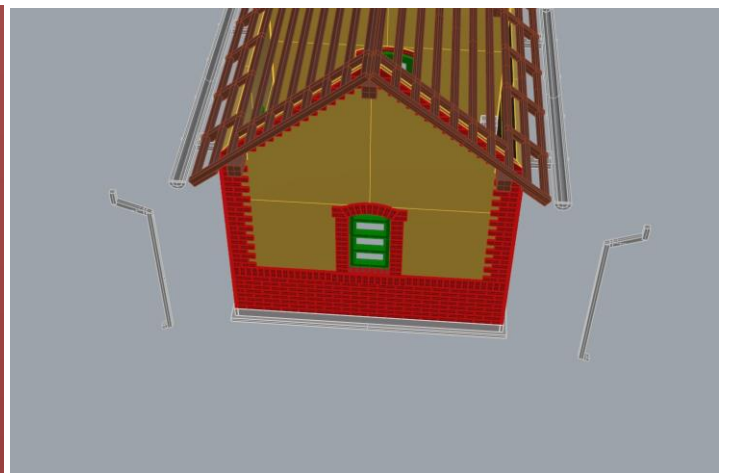
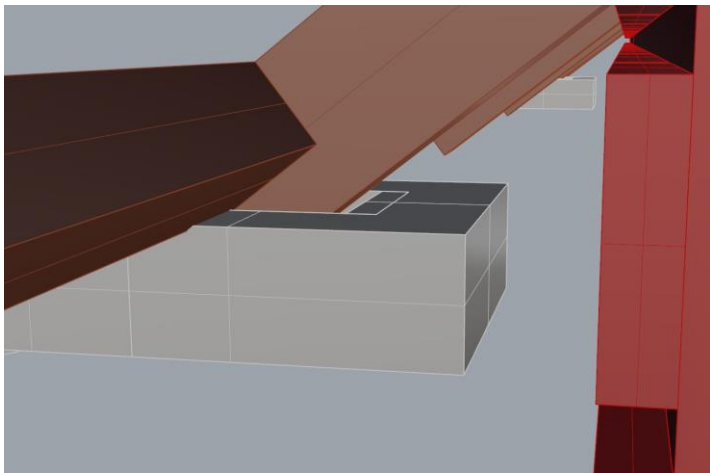
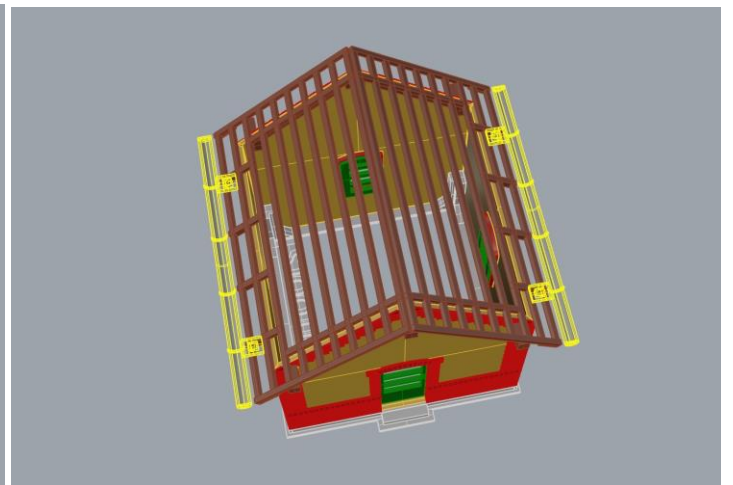
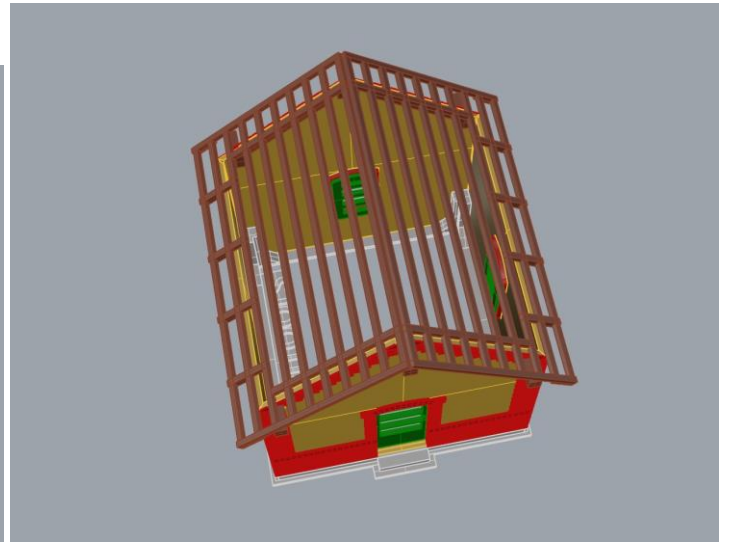
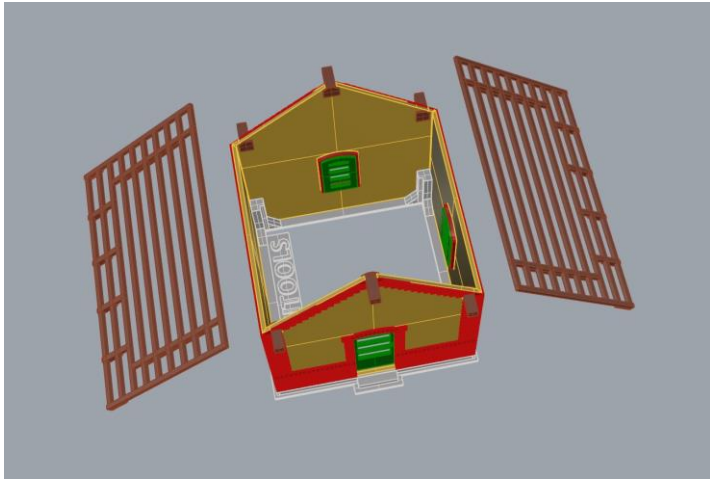
Ragasztási segédletként a falakat ragasszuk össze ideiglenesen az alábbi képen látható módon Scotch Magic- vagy Krepp takarószalaggal, így a falak a későbbi ragasztás során nem fognak elmozdulni. Egy-egy saroknál akár több helyen is megragaszthatjuk a ragasztószalaggal, így még biztosabb tartást kapunk. (A kép illusztráció)

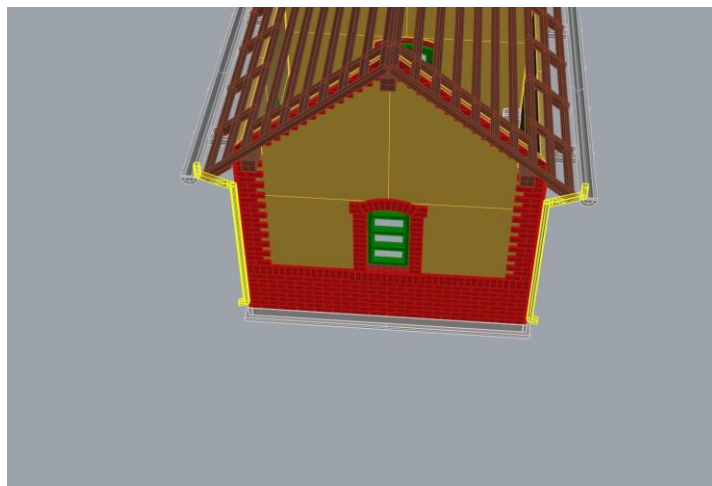
When you want to assemble the walls, it's a very useful to use Scotch Magic Tape or Painter's tape to build up them (as you can see in the picture). After that use adhesive to glue them, but when you finish, remove the tapes. (The picture is an illustration)





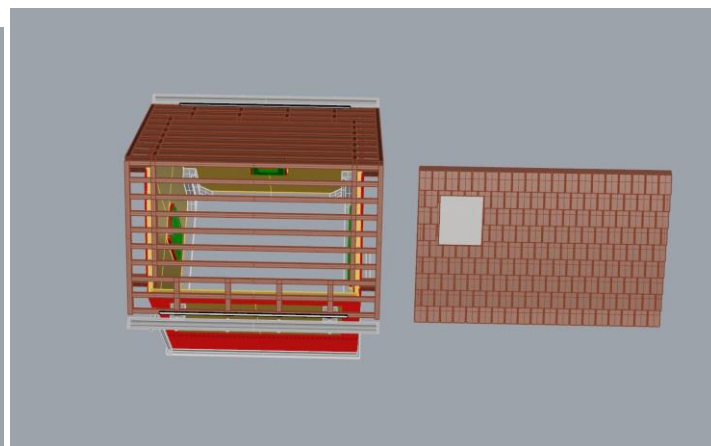
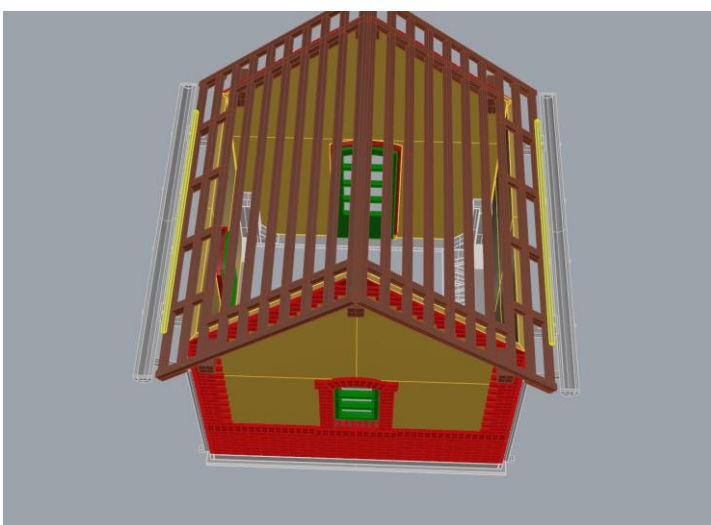
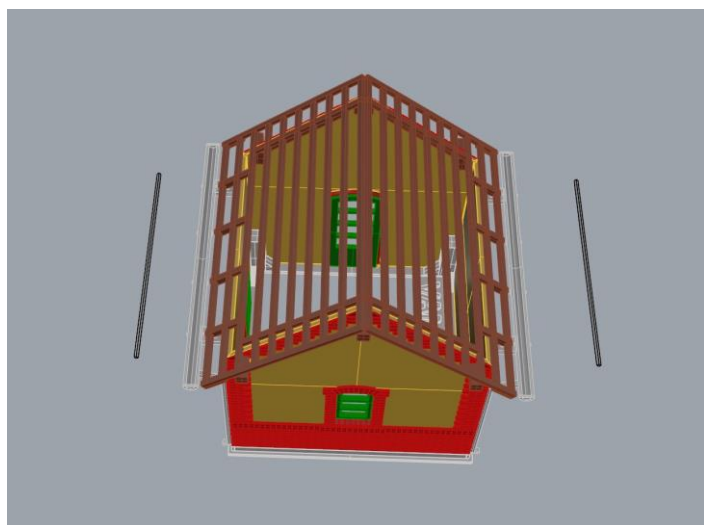


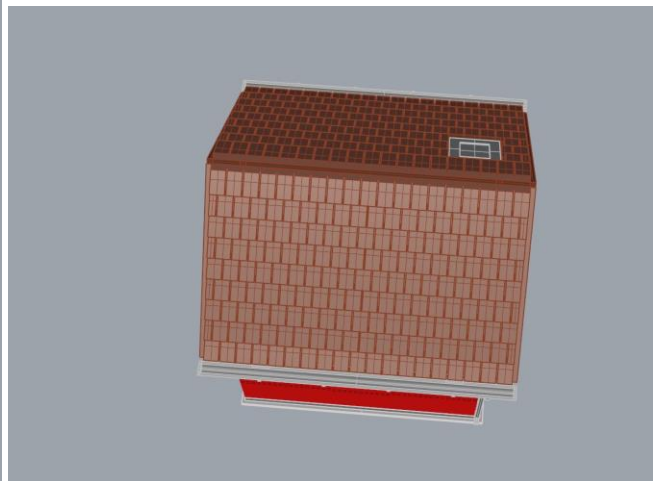
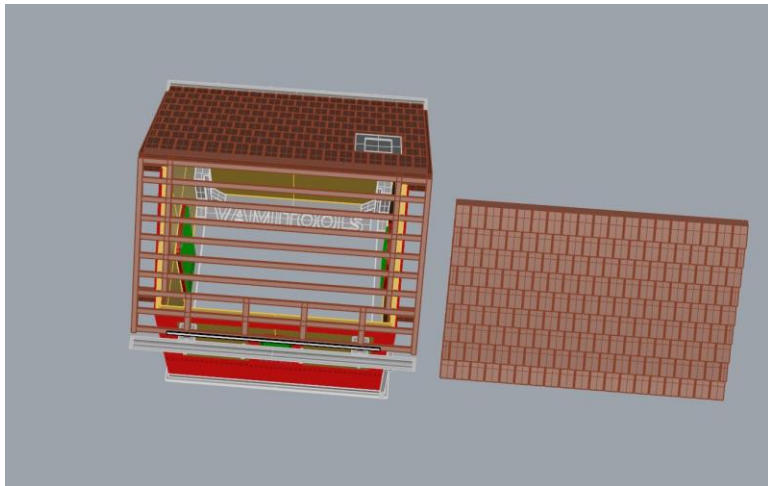
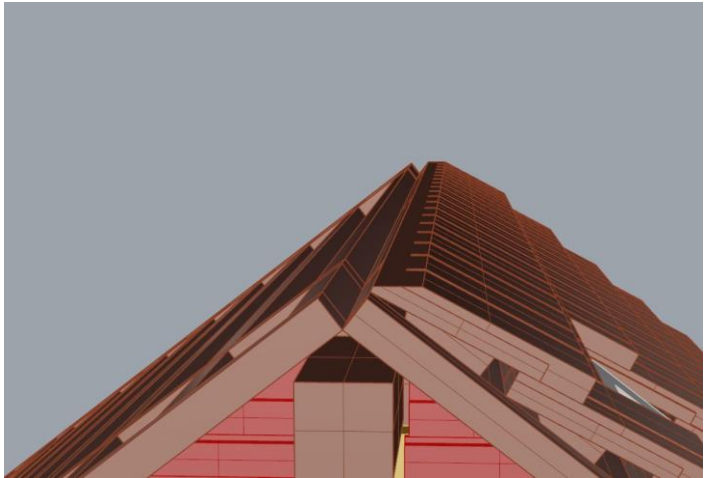
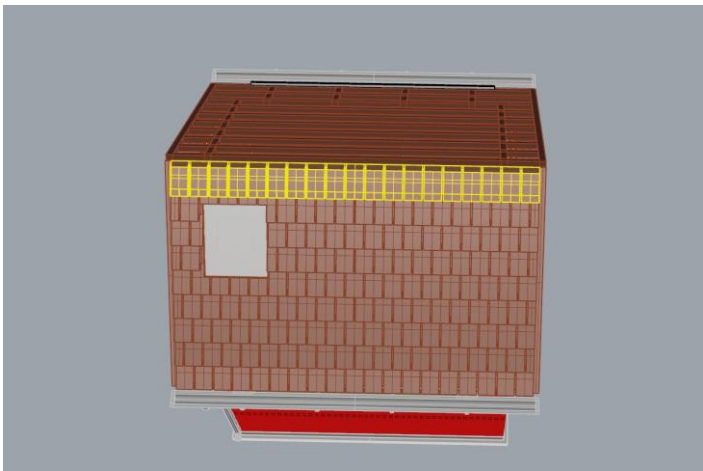
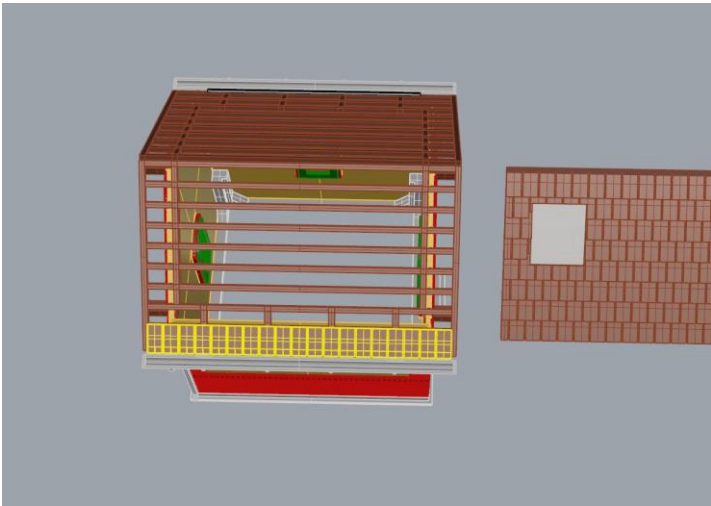


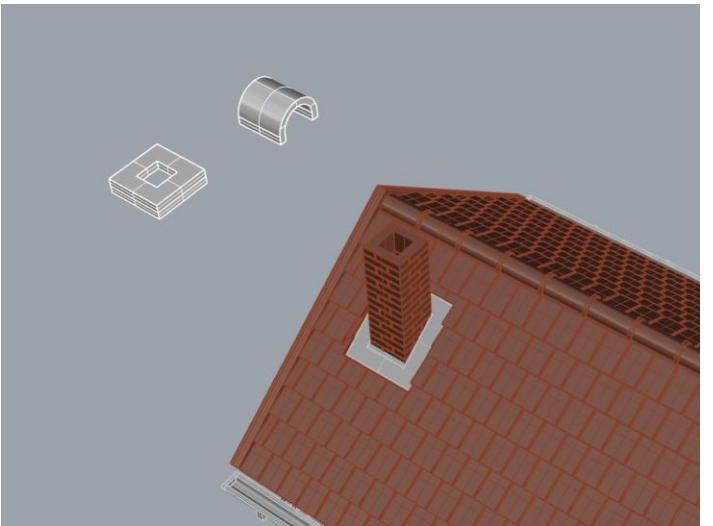
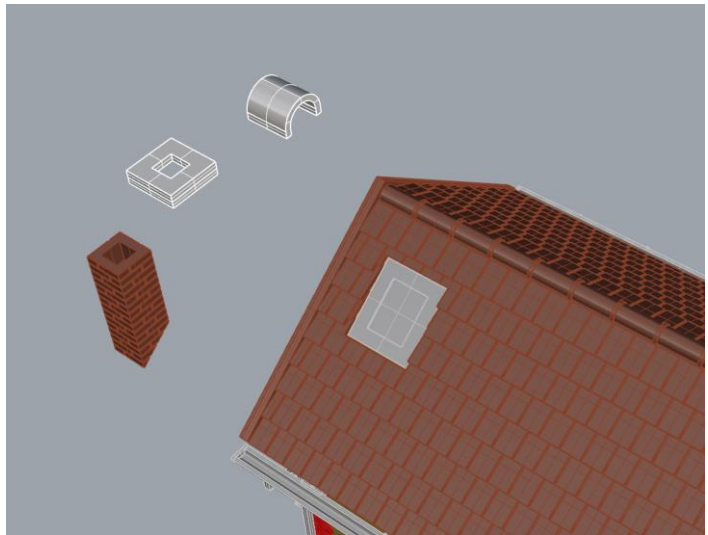
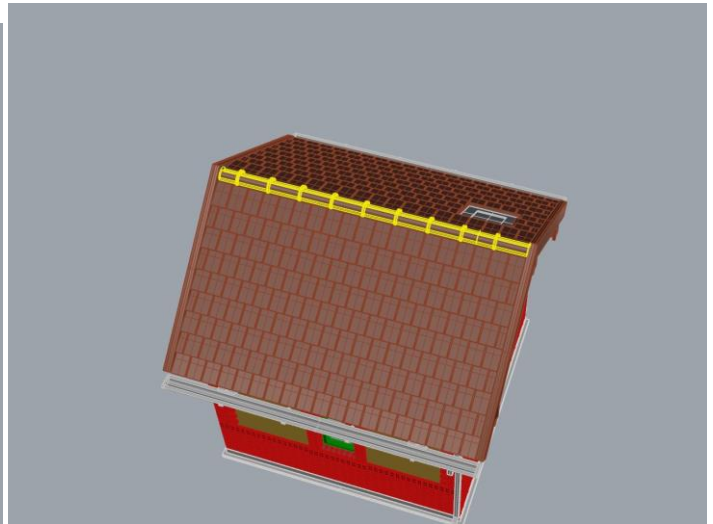
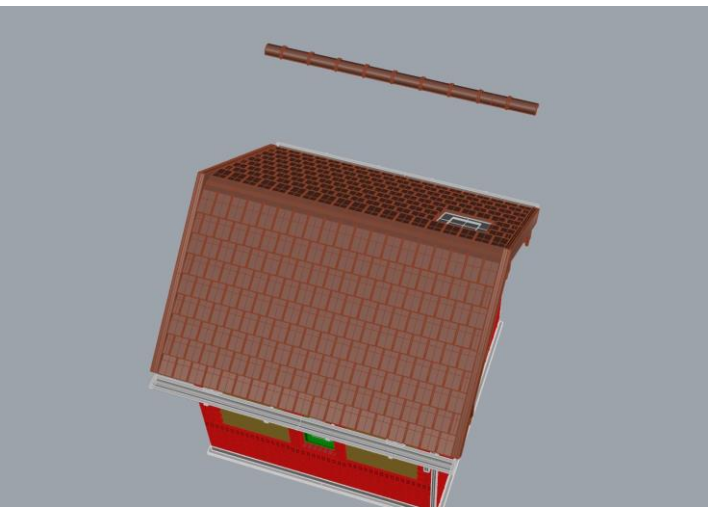
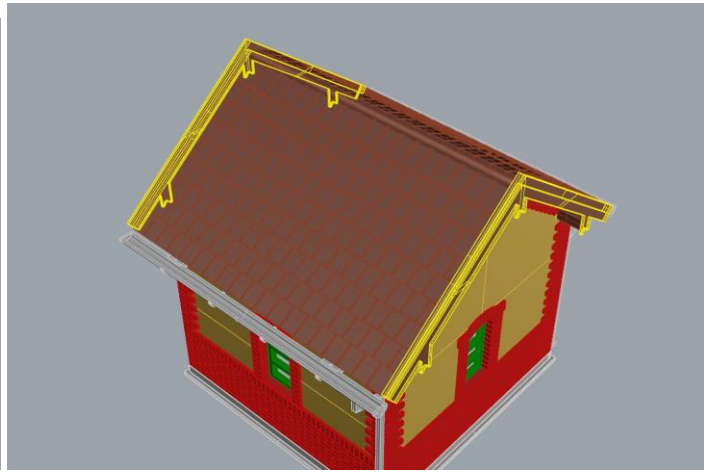
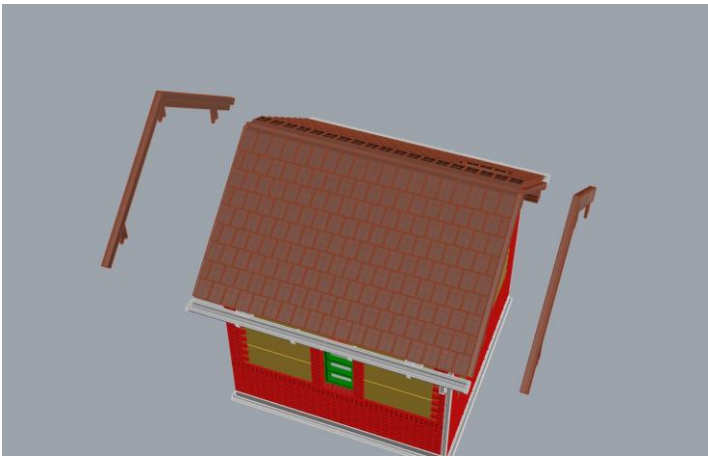


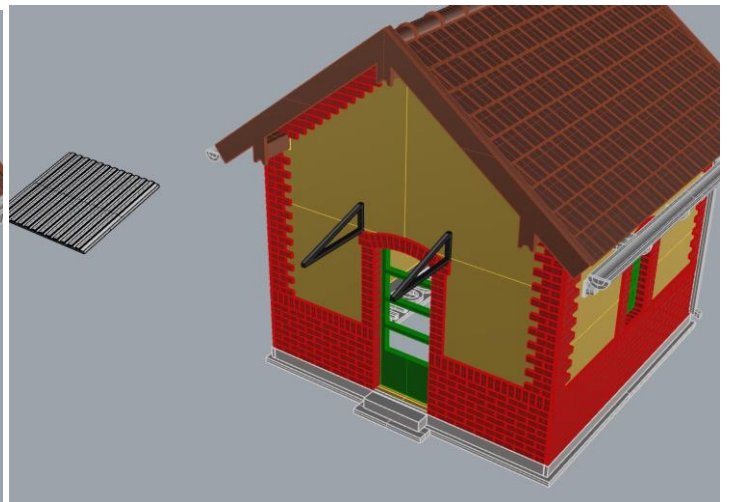
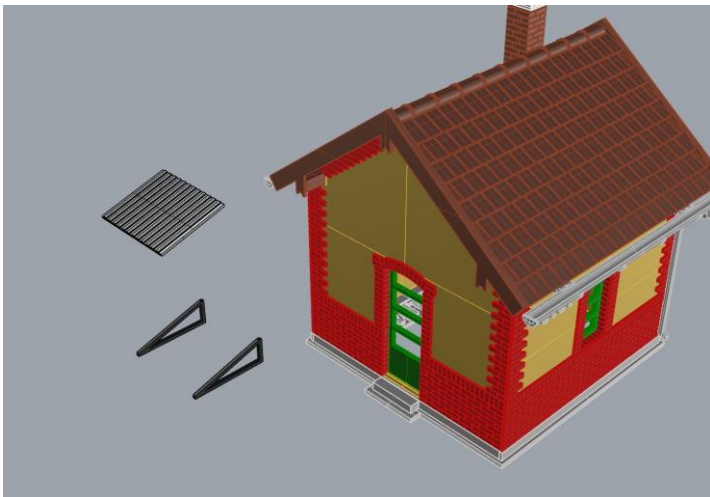
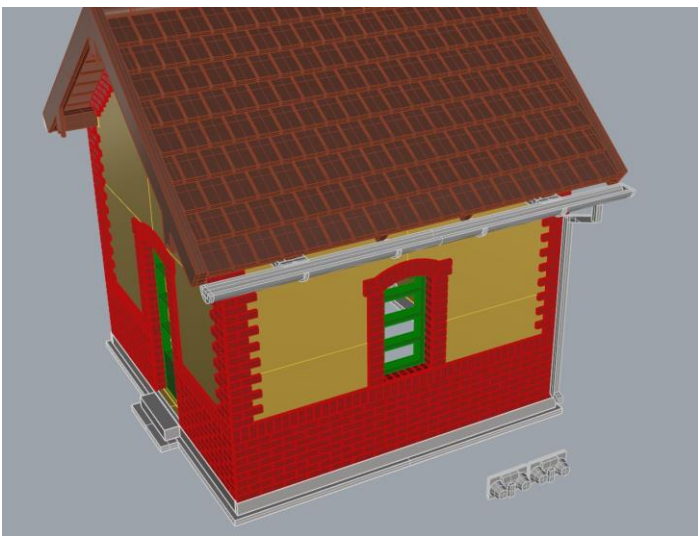
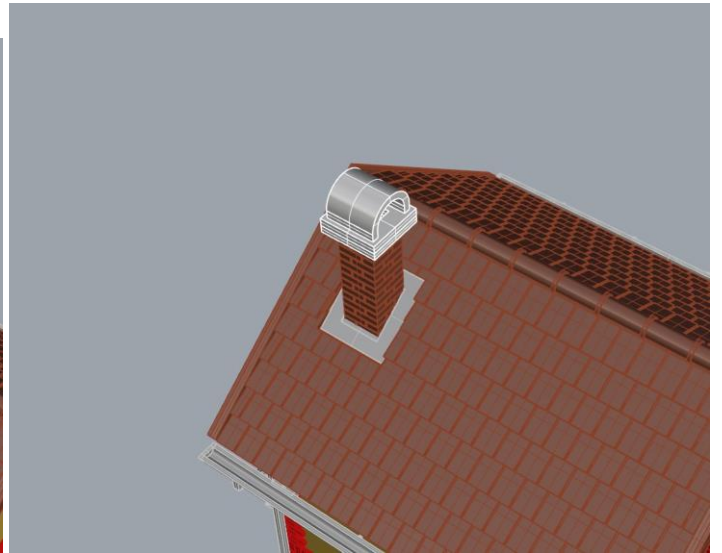
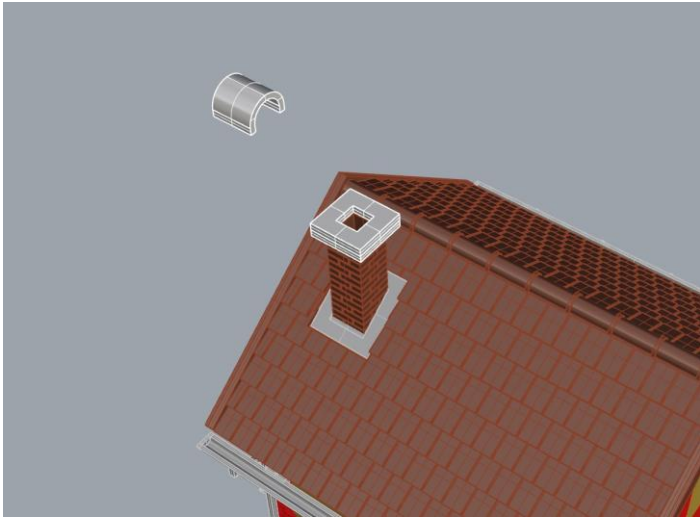
Minden tetőrész legelső léccére kell tenni 1-1 távtartót. Ezek után elkezdhetjük felragasztgatni a cserépsorokat. Figyeljünk a cserépsorok sormintájára. A legelső sorba teli cserepes cserépsor kerüljön, rá vágott sor és így tovább. Legfelülre mindkét oldalra olyan cserépsor kerül, melynek a teteje le van csapva. Ez a kúpcserép jobb illeszkedésében segít. Ügyeljünk rá, hogy az előbb említett cserépsorok kerüljenek a legfelső sorba!

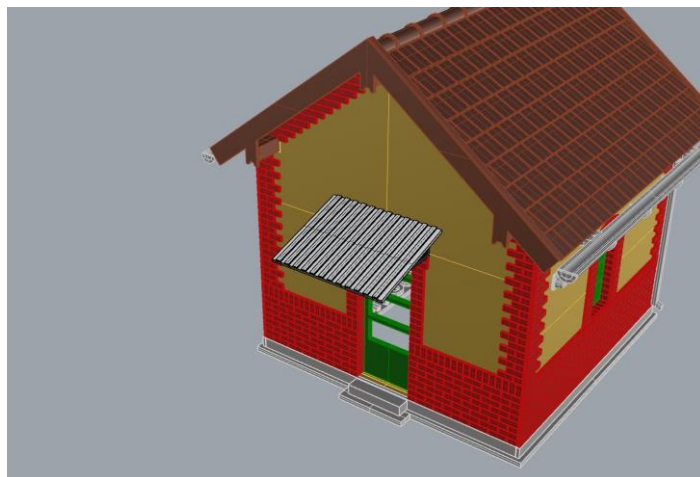
It's required to put on a spacer of the first slat of each part of the roof. It will raise the first roof tile row, and make it to look nicer. The first roof tile row has whole tiles at both edges (that's important). Then comes a roof tile row with half tiles at both edges, and so on. The last roof tile row at the top of the roof has chamfered top edge. It makes easier to put on the cone tile row.











Készen is vagyunk.

We're ready.

