

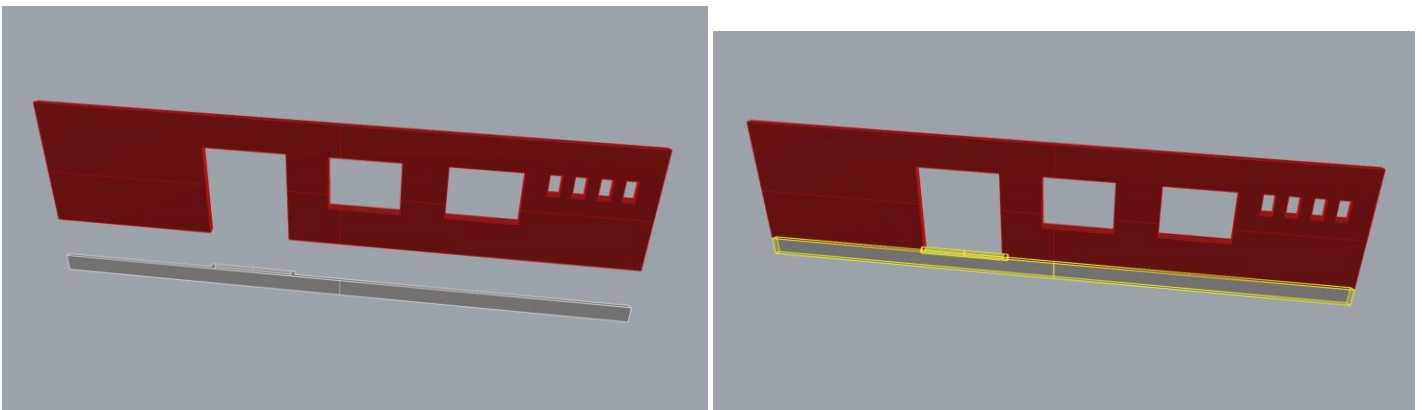
VAMITTOOLS Vasúti épület – 739-es típus



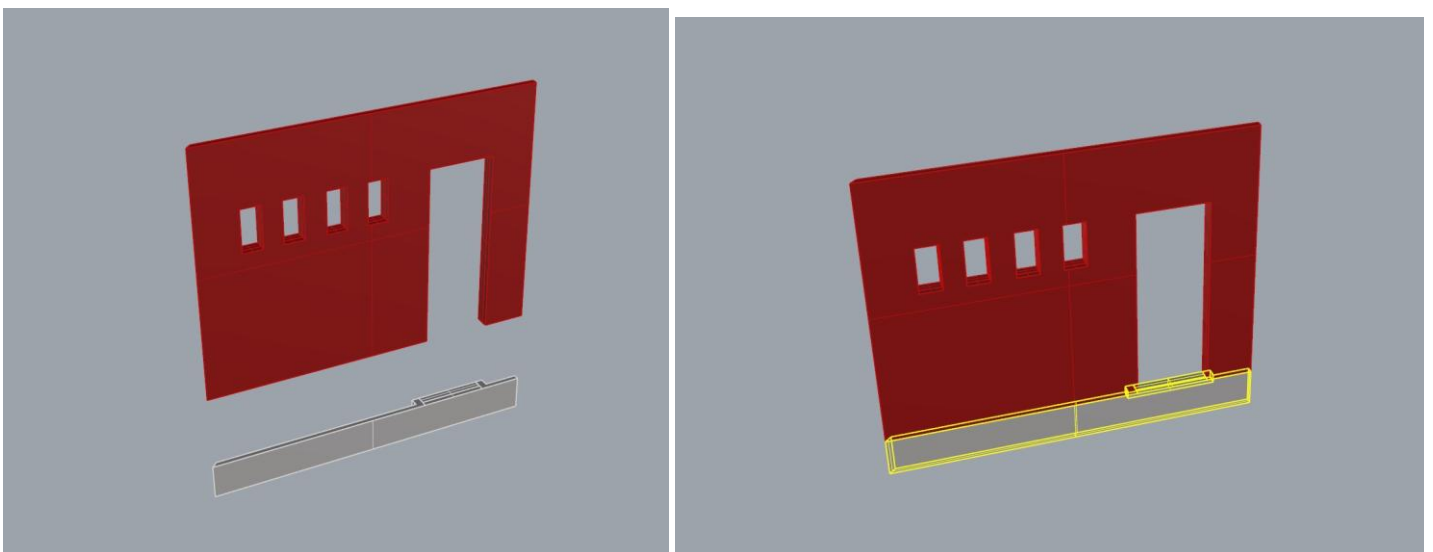
Maketrasztót (Rewell stb.) NE használjanak termékeinkhez, mert az oldószere kárt tehet az egyes alkotóelemekben (főleg a vékonyakban)! A következő ragasztókat ajánljuk: kék tubusos Új Technokol Rapid (acetonmentes), kétkomponenses ragasztó (Epoxy Rapid, Araldite stb.). Bővebb információ a ragasztással, festéssel stb.-vel kapcsolatban a minden termék oldalán elérhető általános tájékoztatóban van!

Az összerakást az oldalak külön-külön történő összerakásával kezdjük. Minden falrésznél a sima (fényes) oldal néz kifelé! Kövessük a képeken látható lépéseket. Célszerű az épület belső oldalára karton maszkolókat tenni, hogy a fény ne világítsa át az épület falait. A karton maszkolókat az útmutató külön nem jelzi!

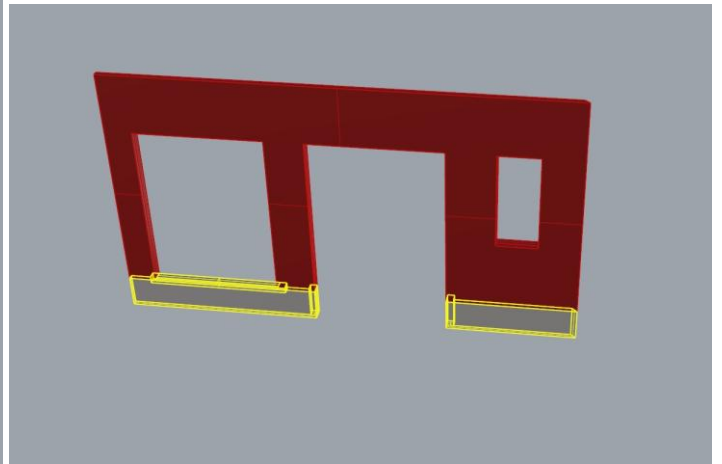
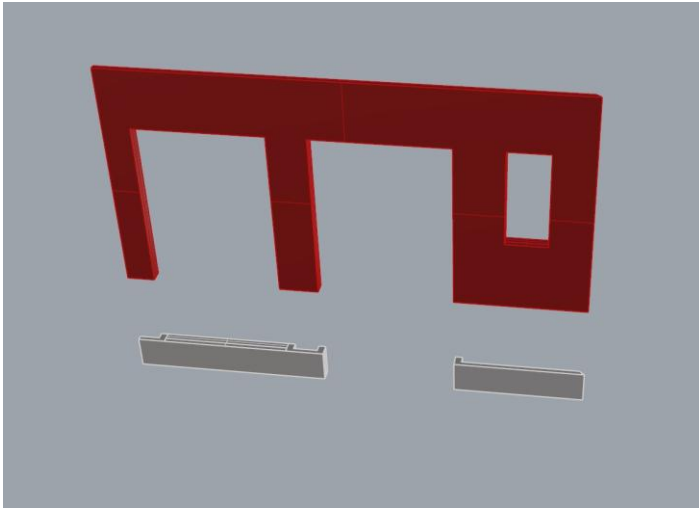
1. oldal:



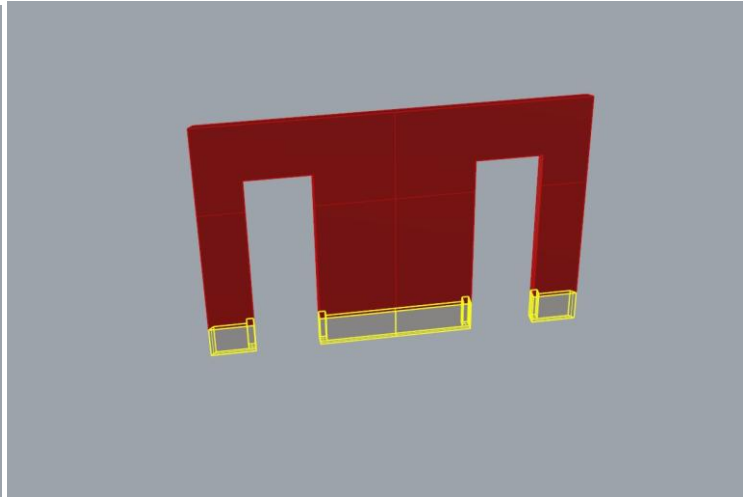
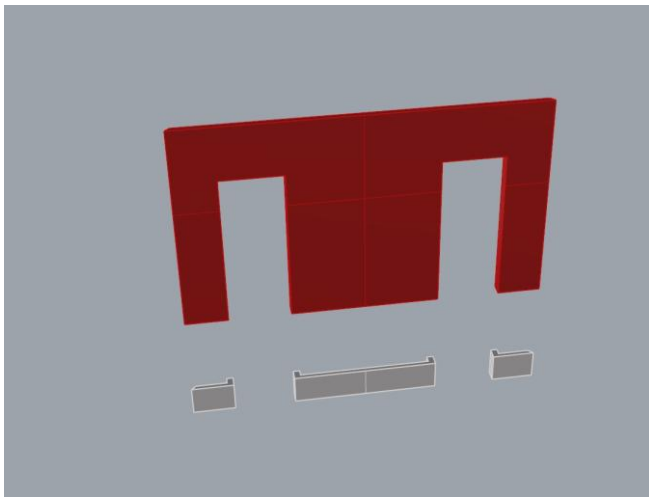
2. oldal:



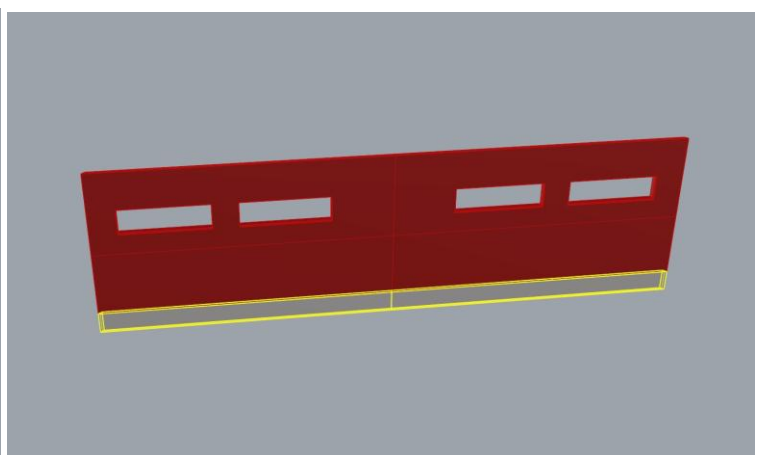
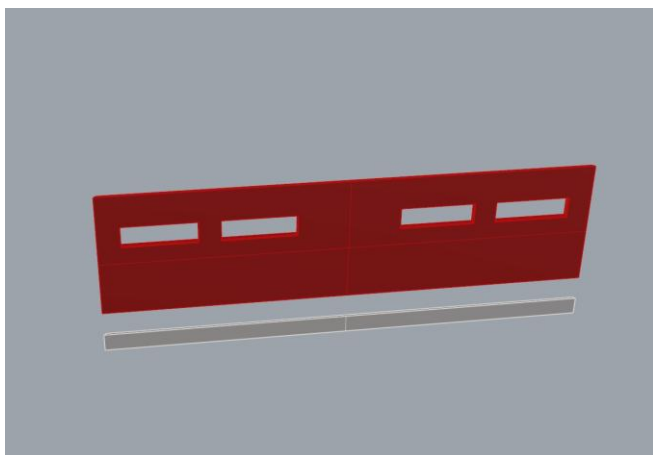
3. oldal:



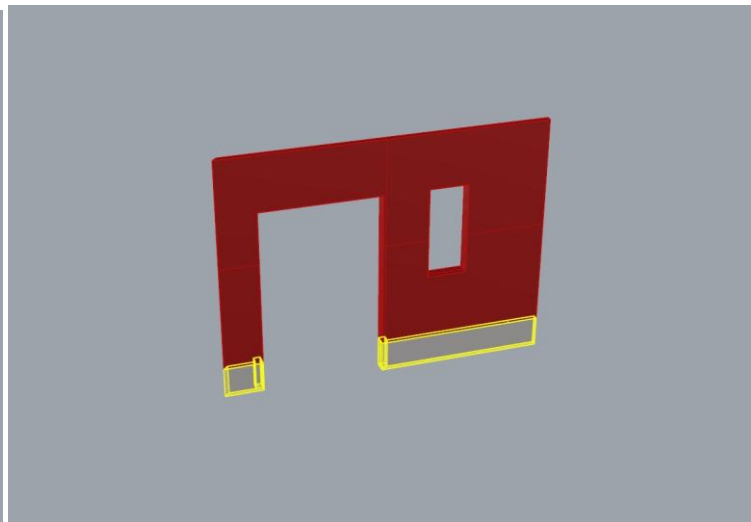
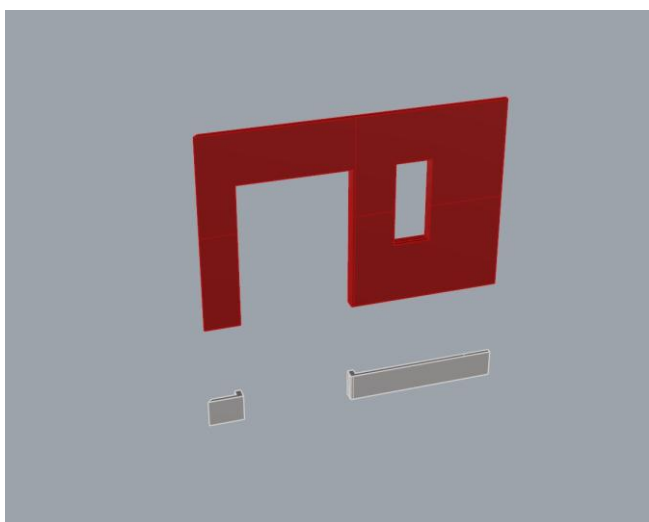
4. oldal:



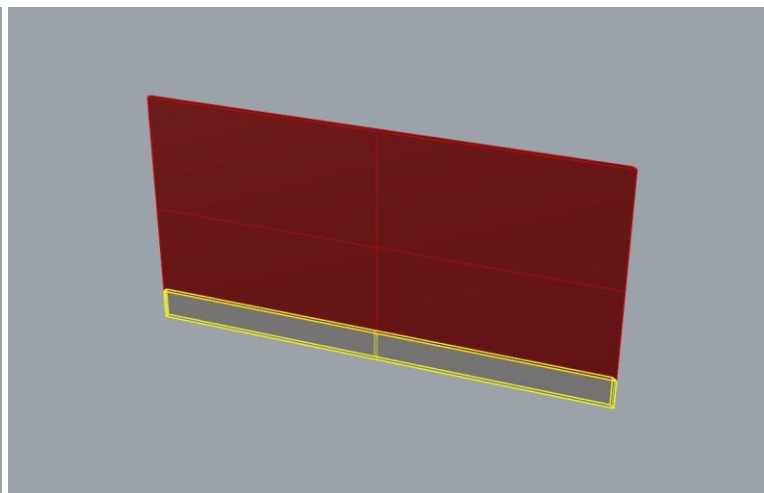
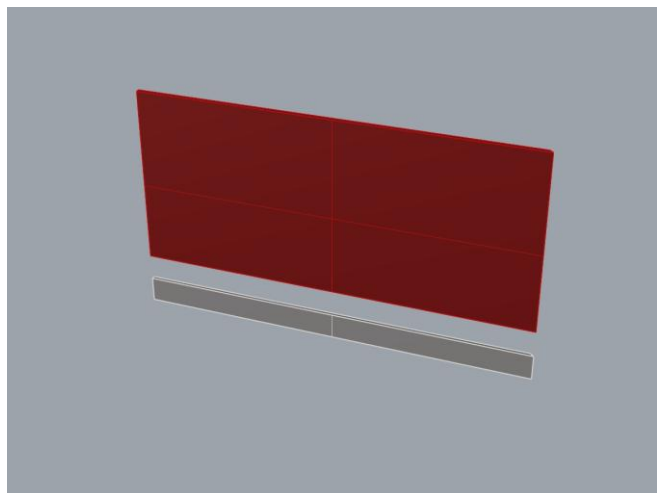
5. oldal:



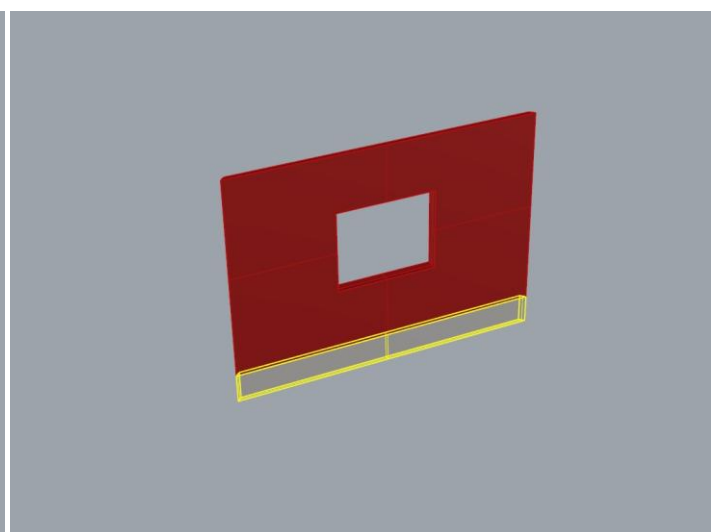
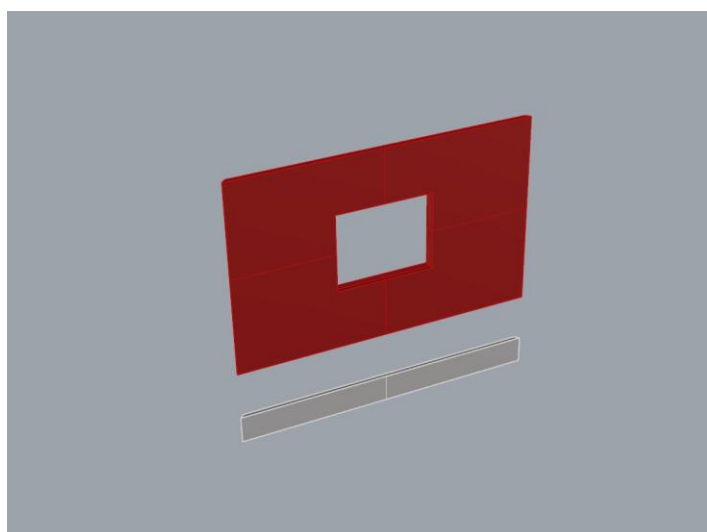
6. oldal:



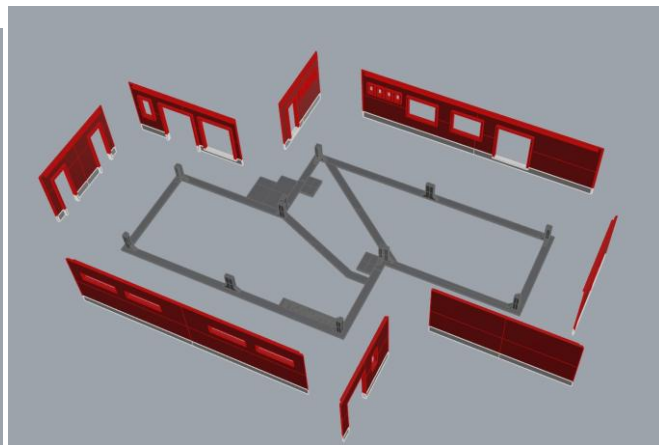
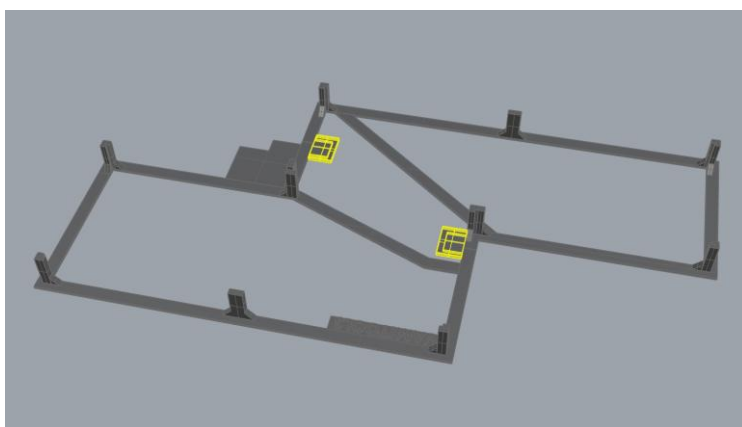
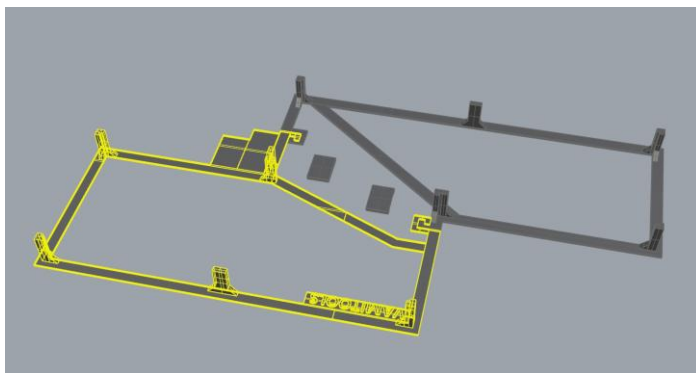
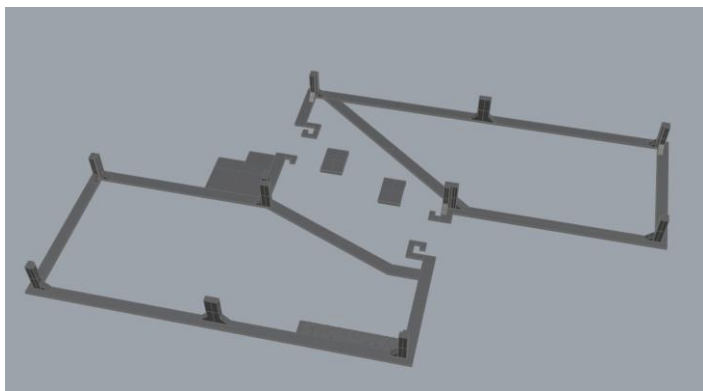
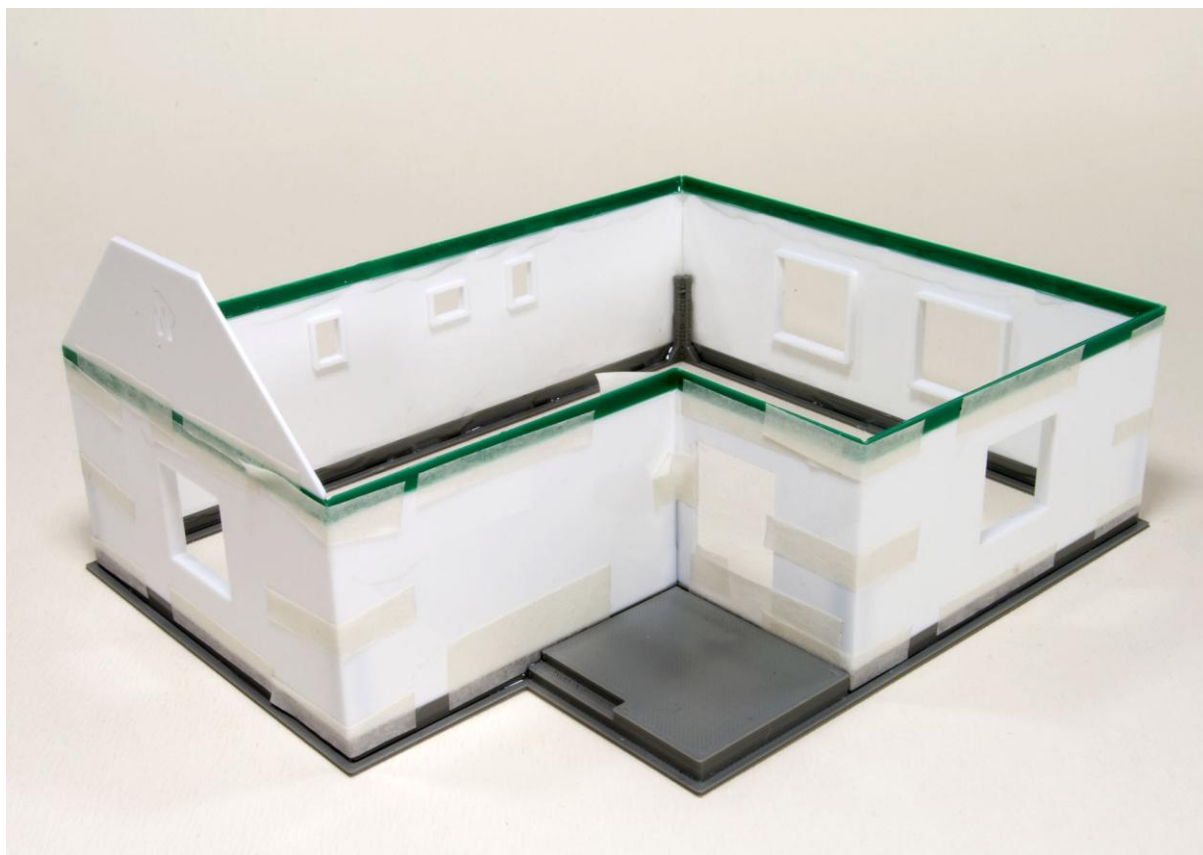
7. oldal:

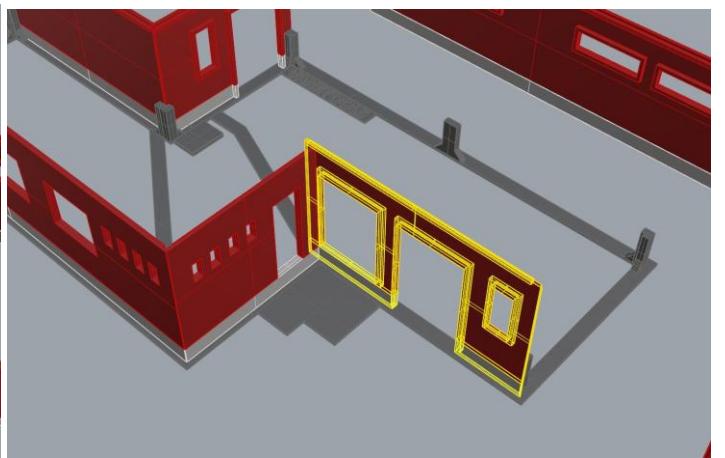
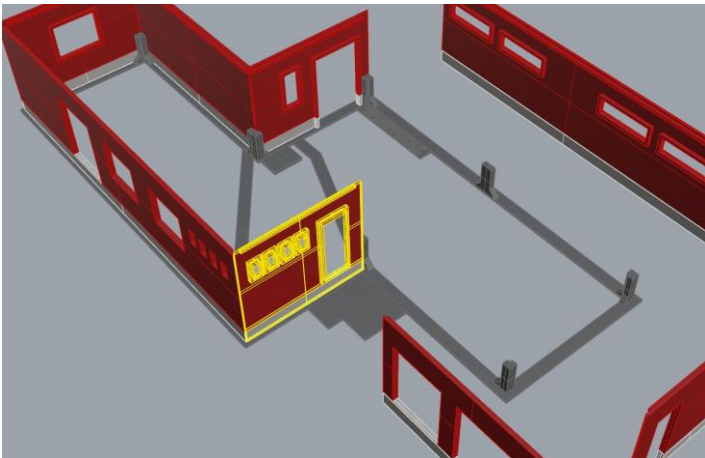
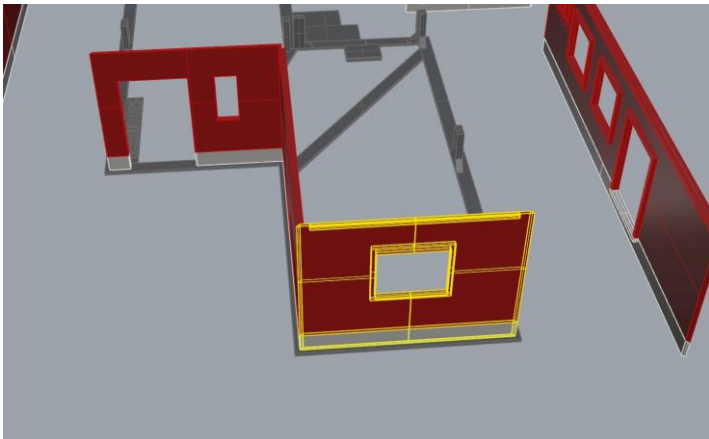
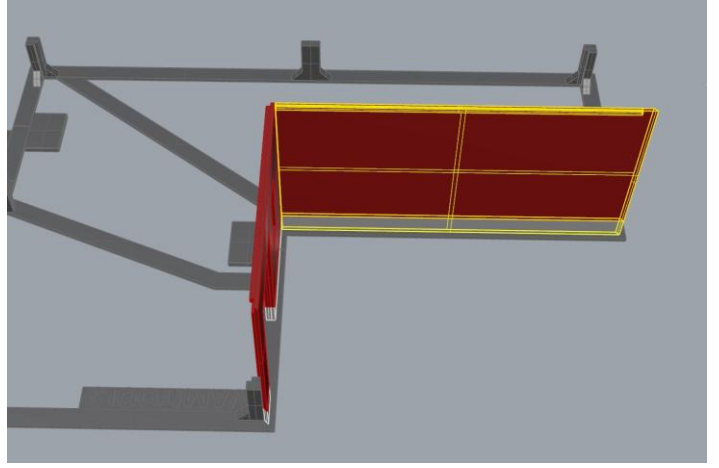
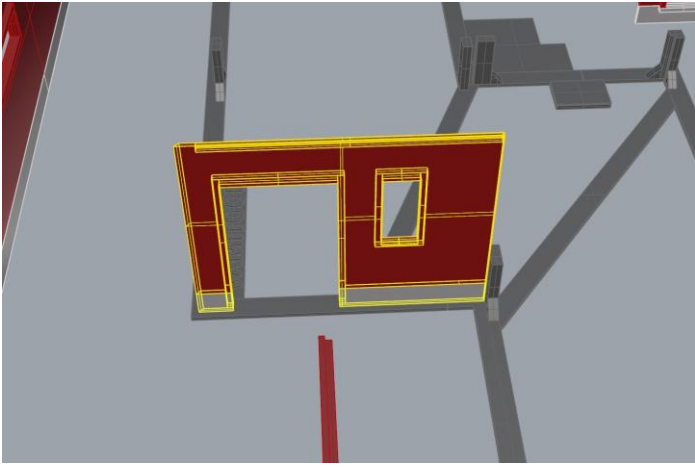


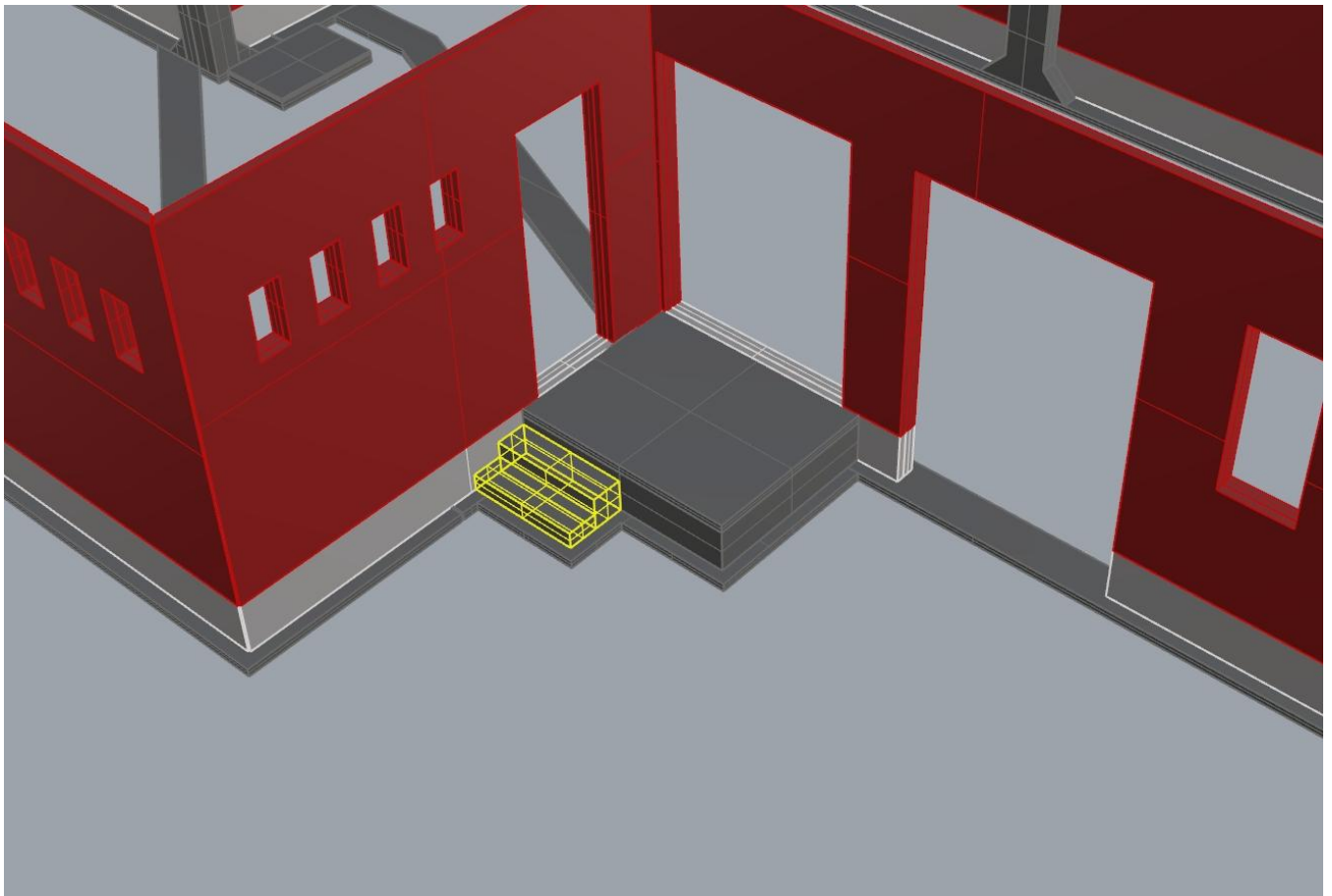
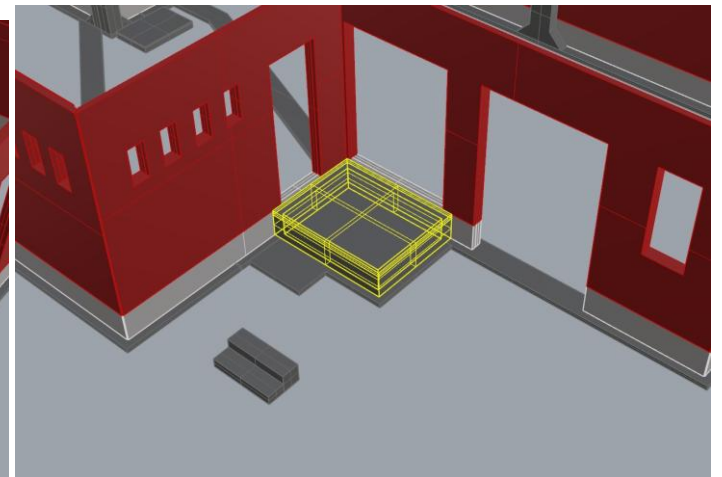
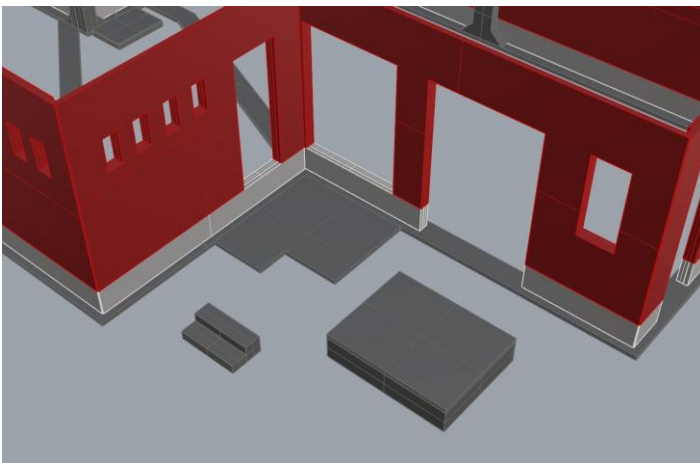
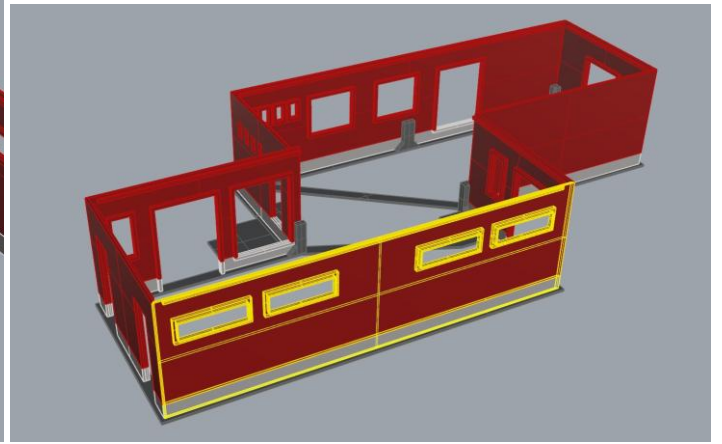
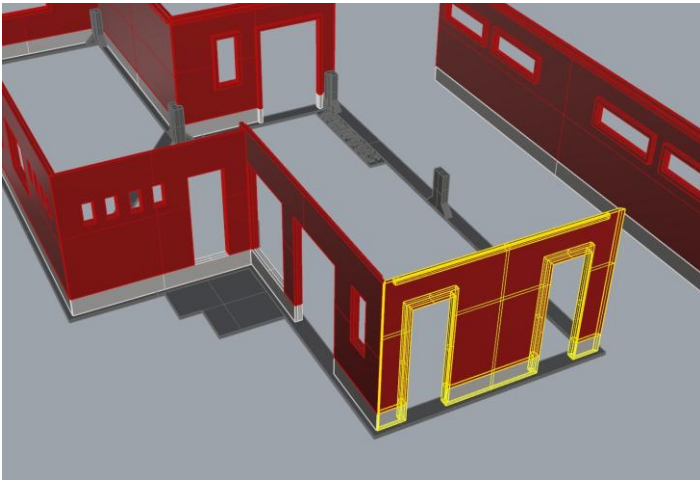
8. oldal:



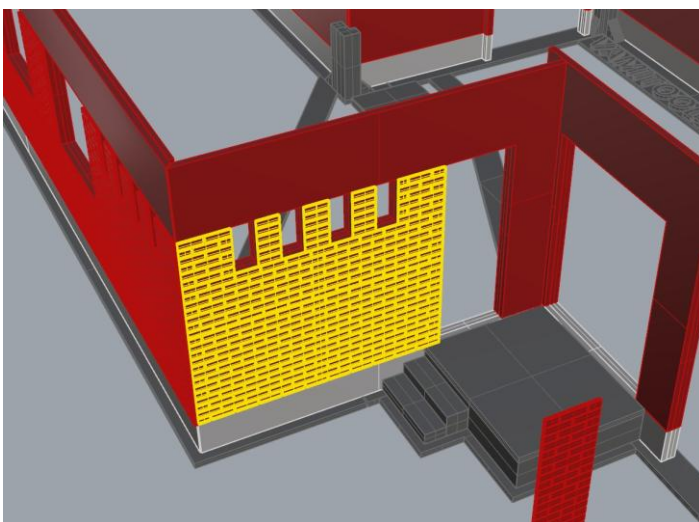
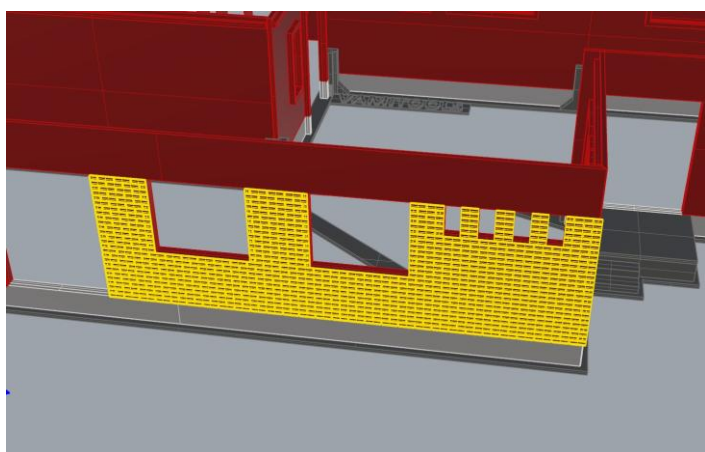
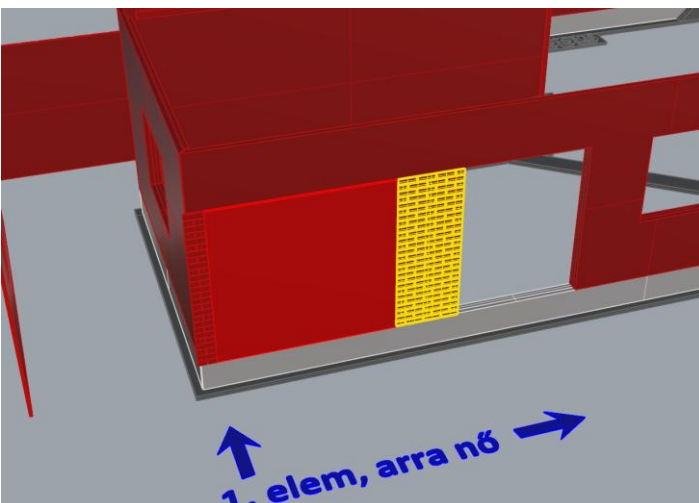
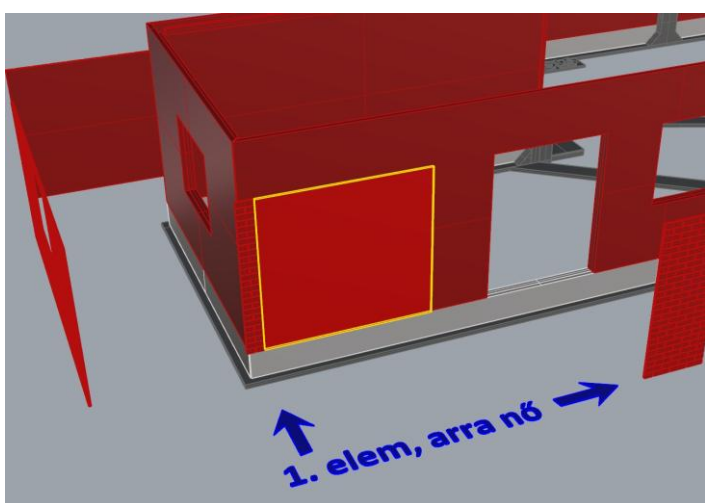
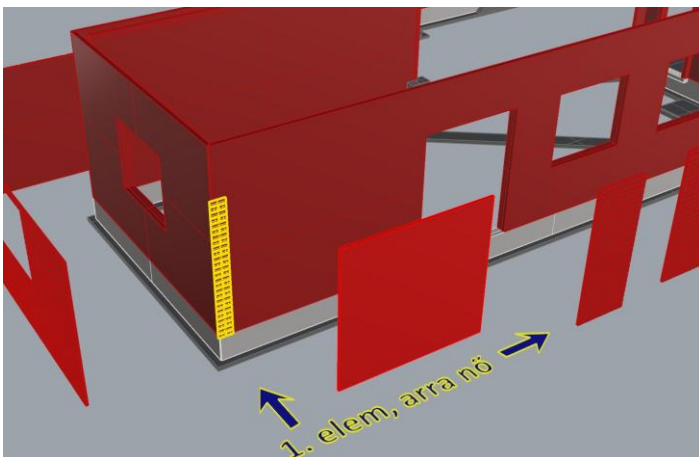
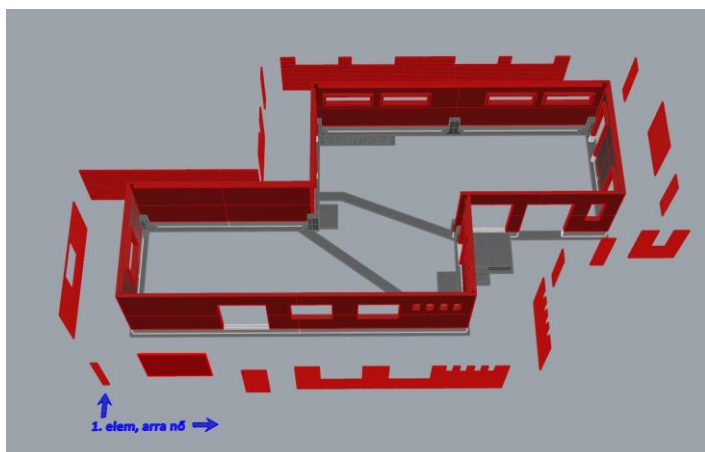
Ragasztási segédletként a falakat ragasszuk össze ideiglenesen az alábbi képen látható módon Scotch Magic- vagy Krepp takarószalaggal, így a falak a későbbi ragasztás során nem fognak elmozdulni. Egy-egy saroknál akár több helyen is megragaszthatjuk a ragasztószalaggal, így még biztosabb tartást kapunk. (A kép illusztráció)

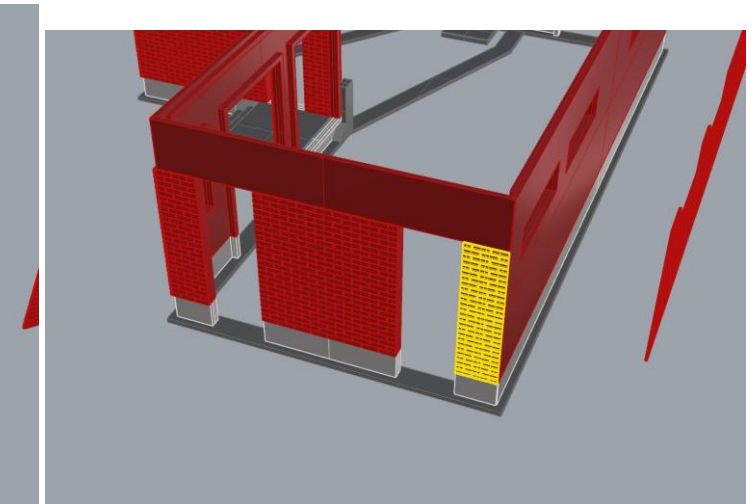
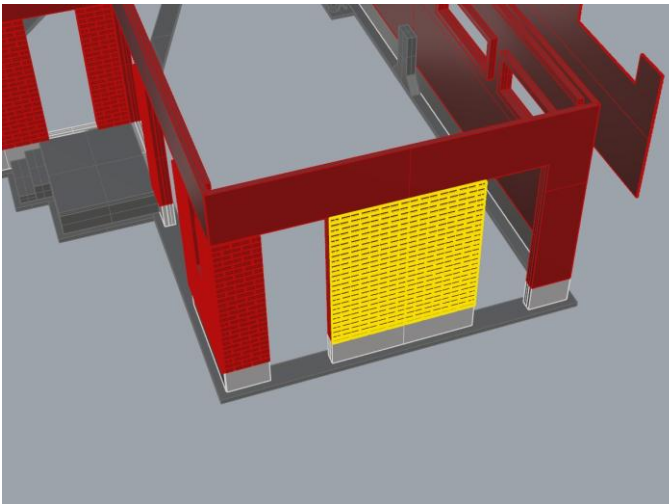
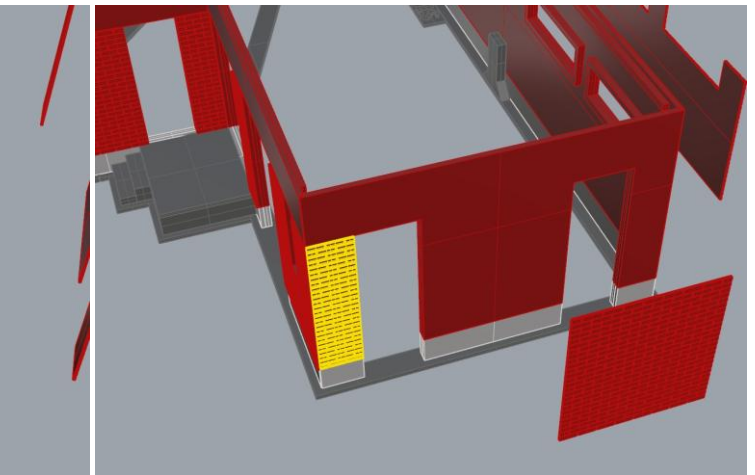
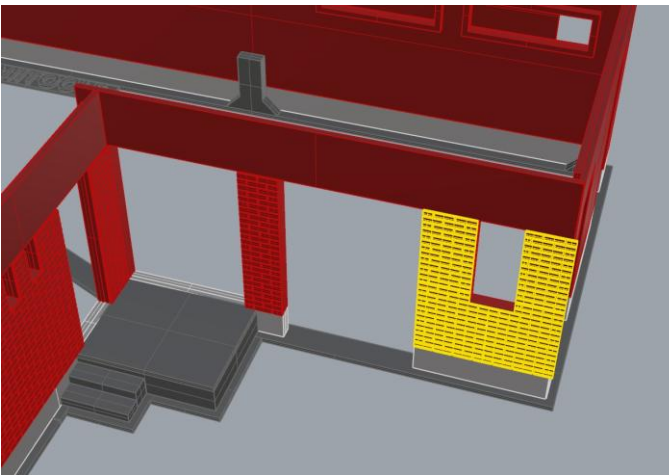
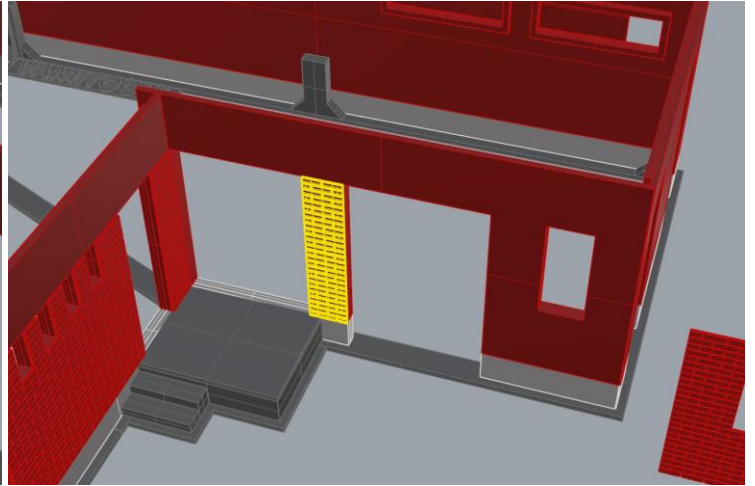
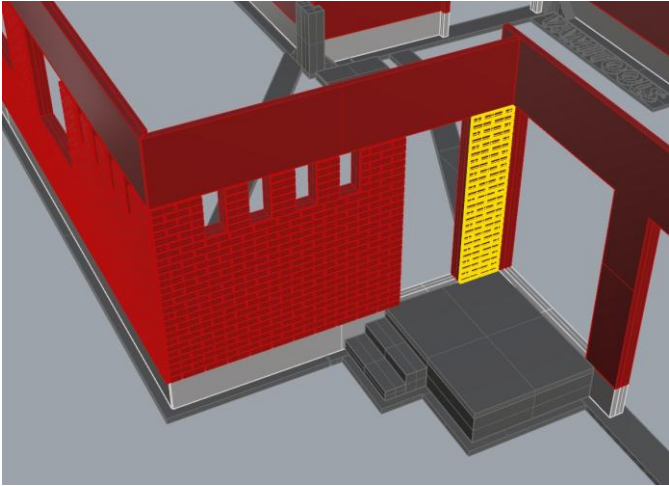


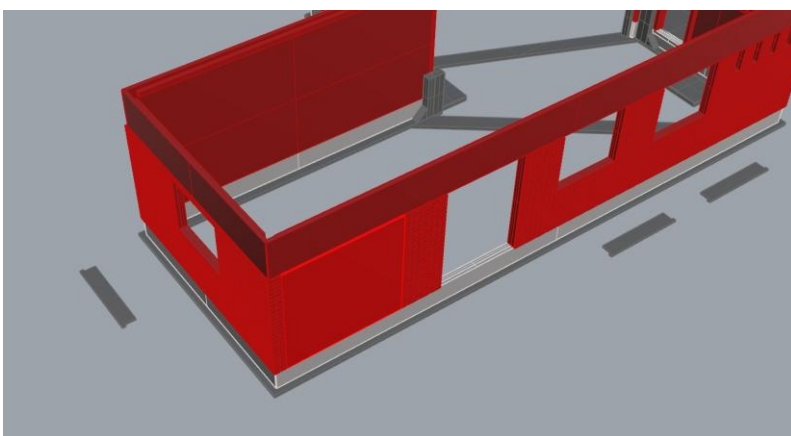
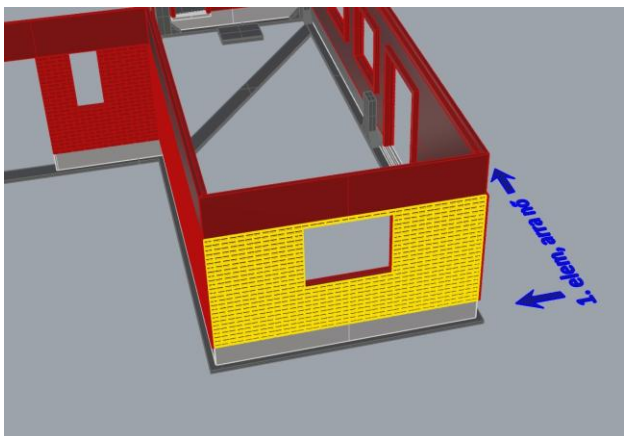
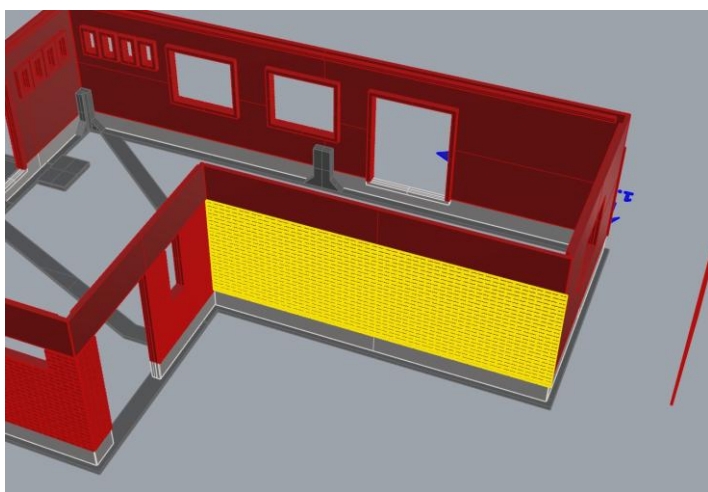
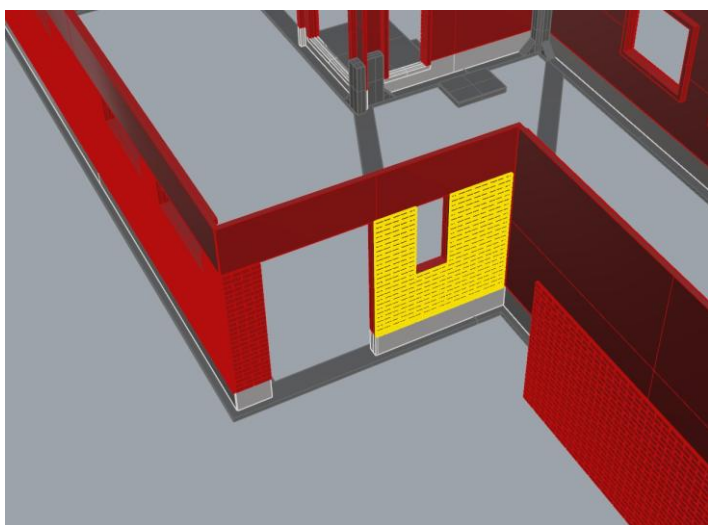
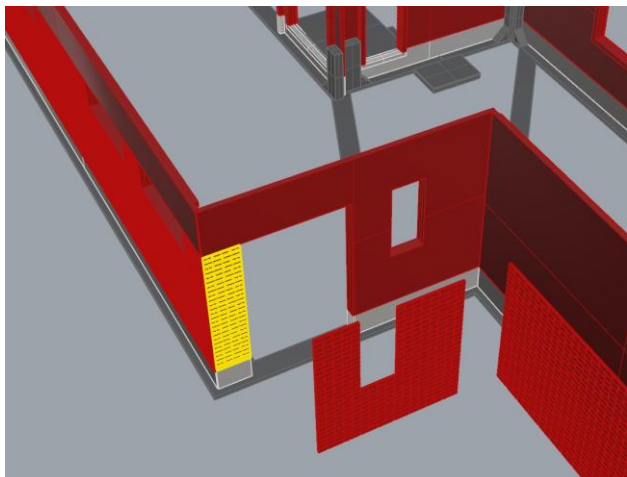
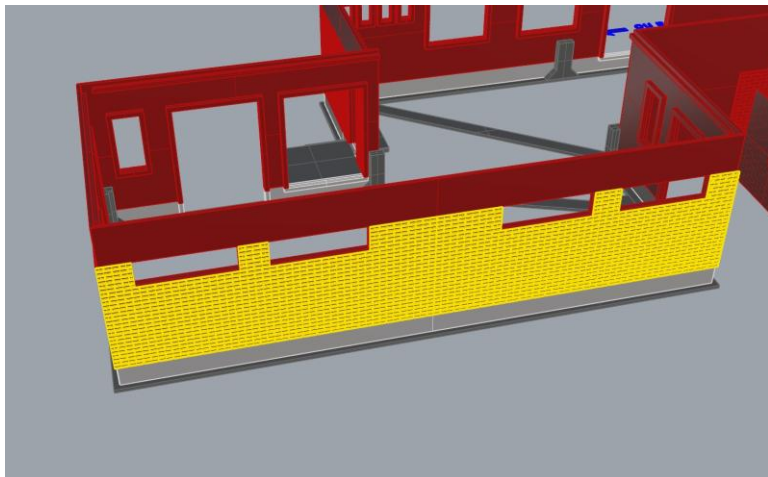


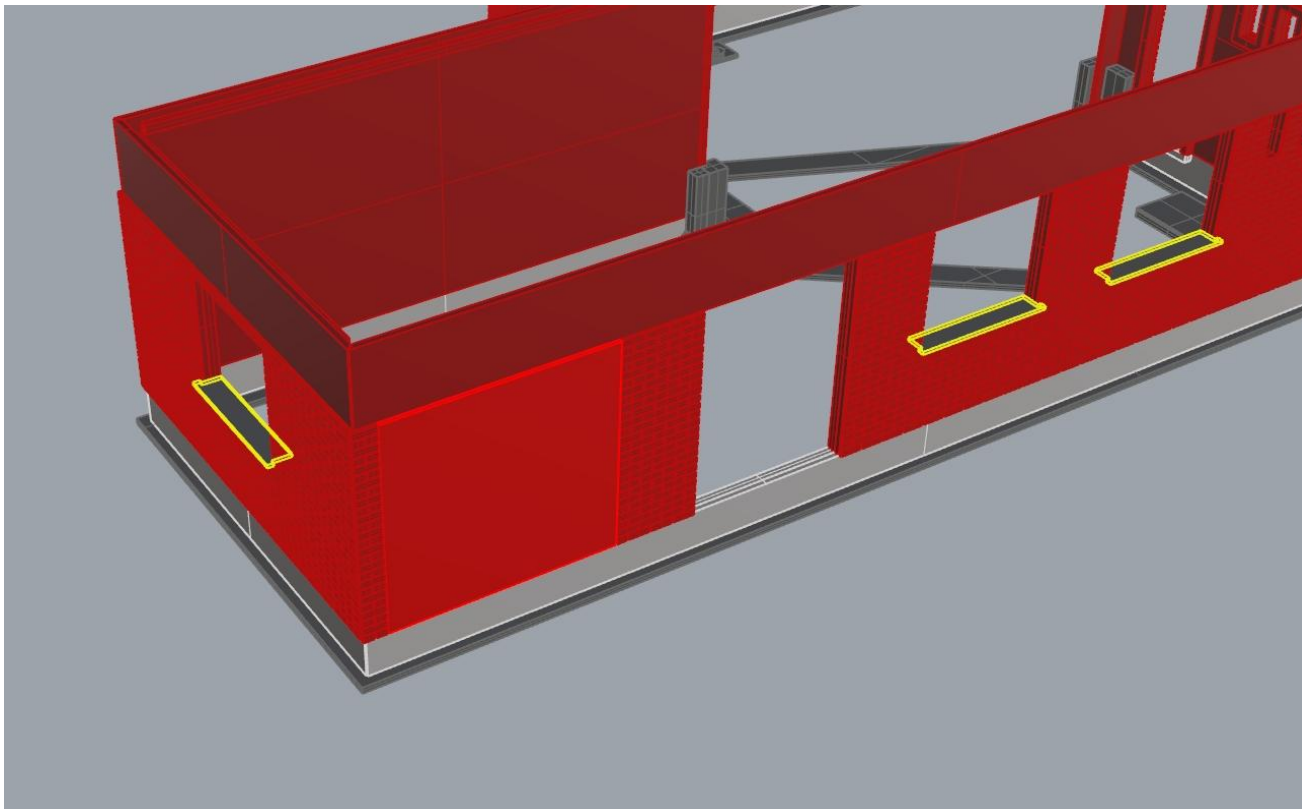


A tégladíz elemei számozva vannak. Az alábbi képen látható az első elem, a többi utána jön a sorban. A „második” elem nincs benne a sorban, mert az nem téglá, csak egy piros sík falelem, viszont szükséges itt beépíteni.

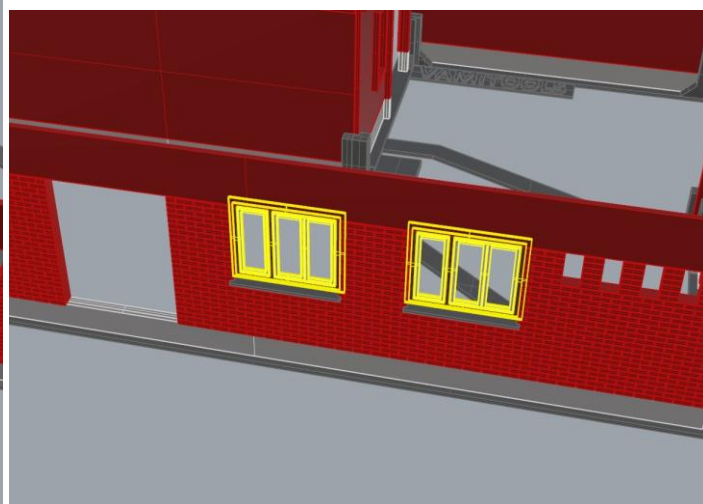
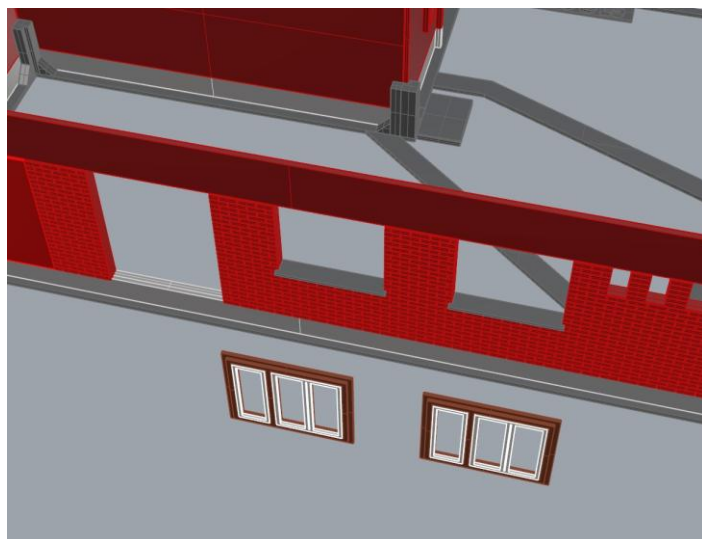
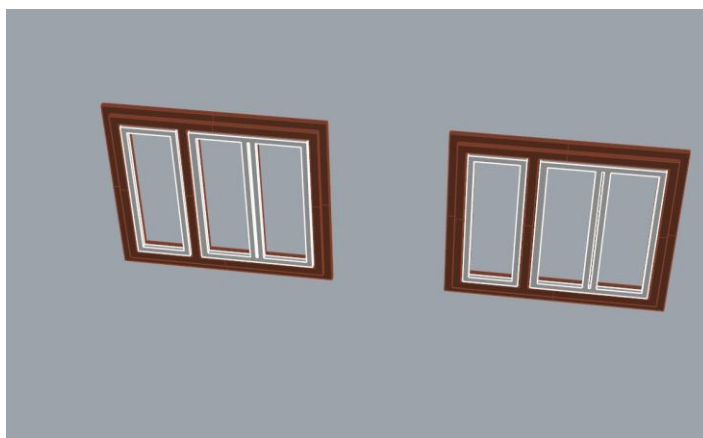
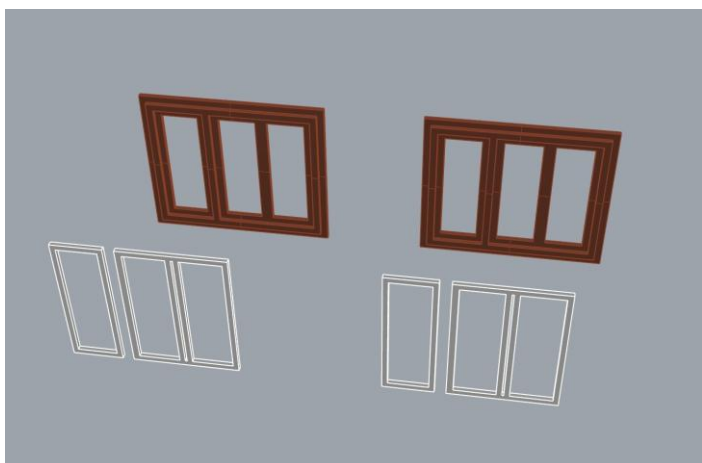


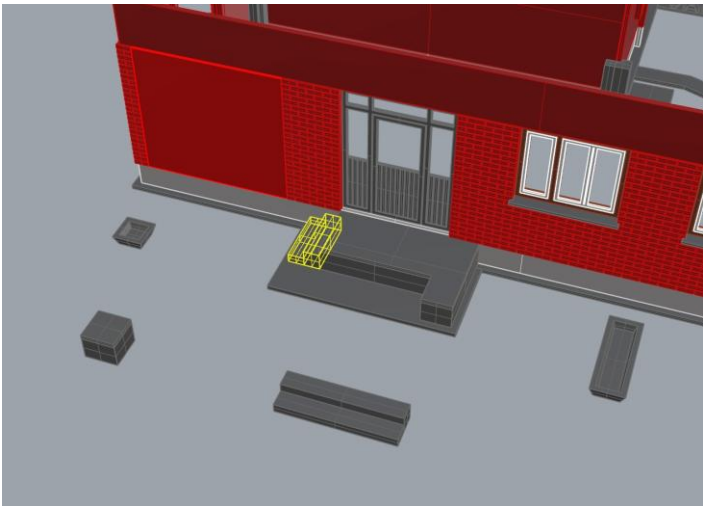


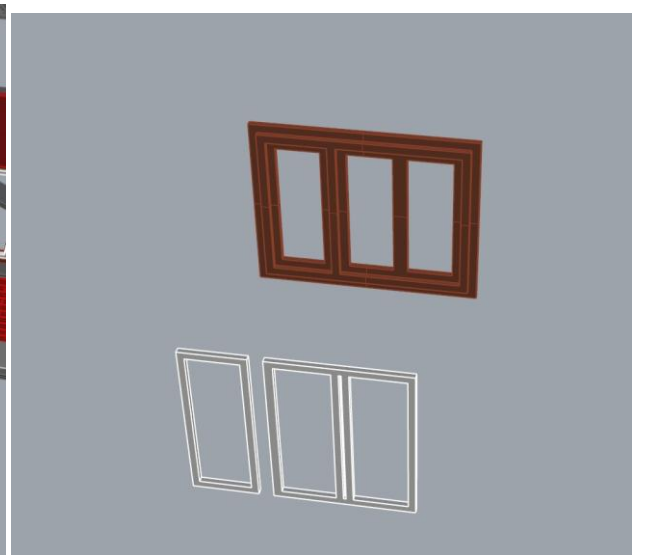
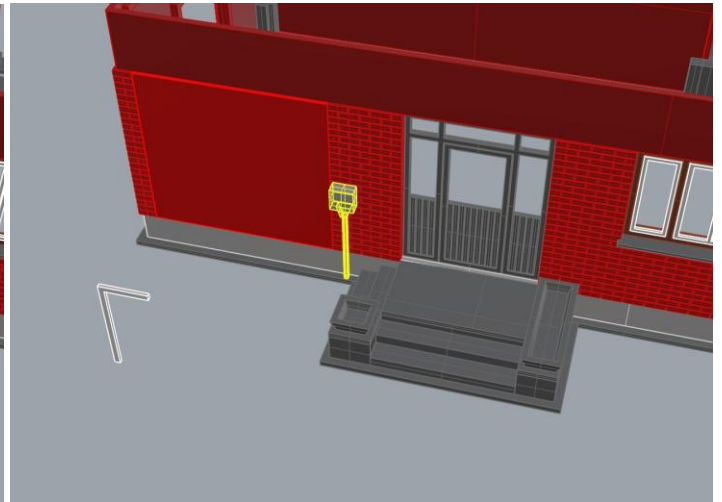
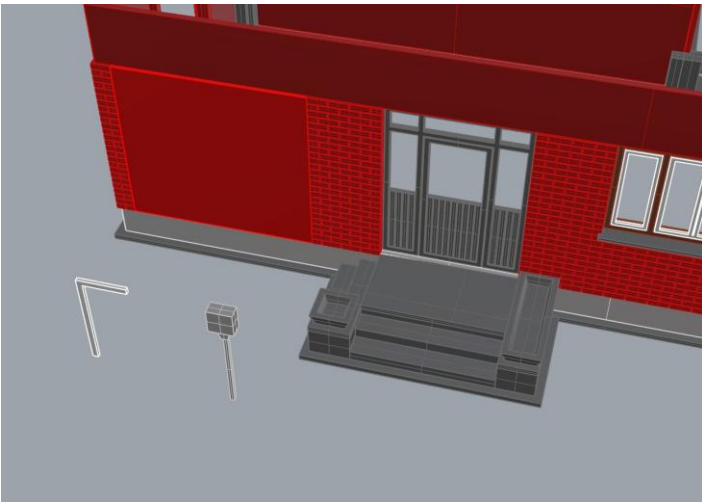
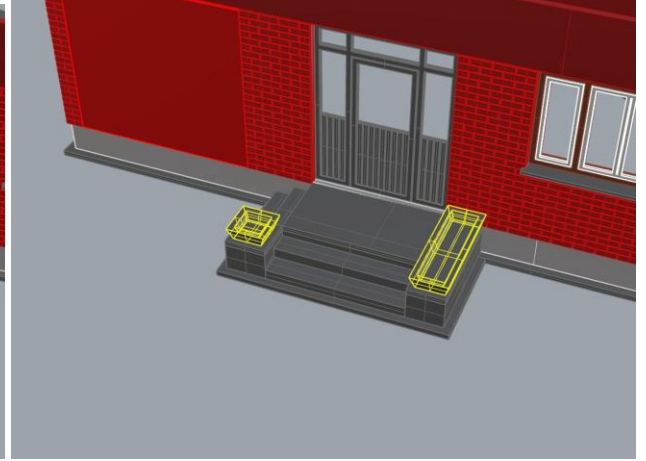
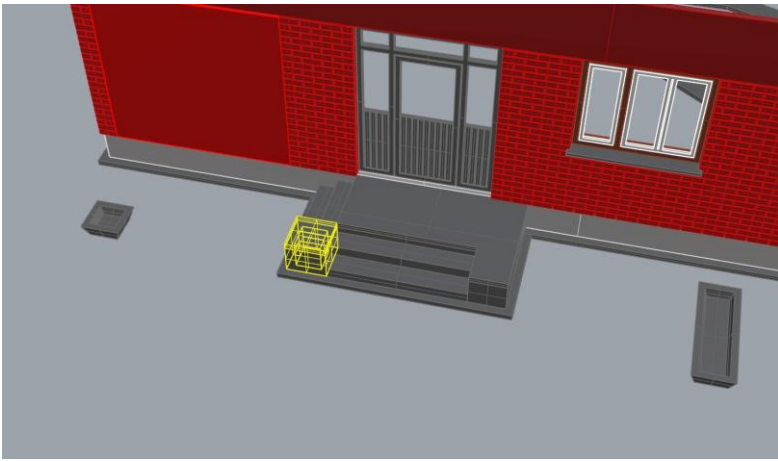


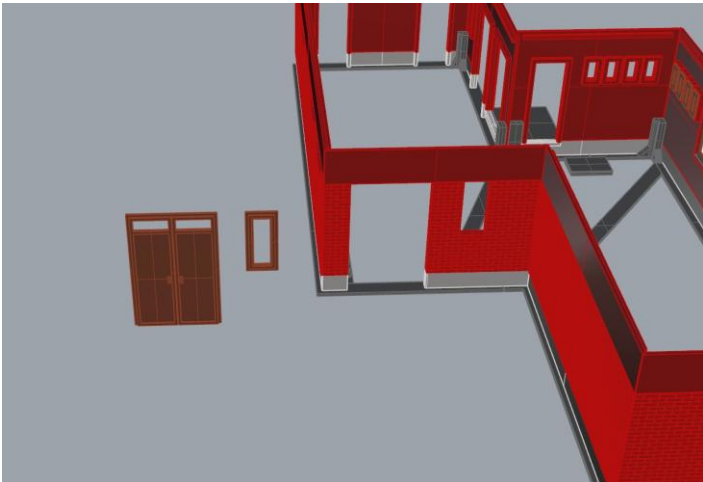
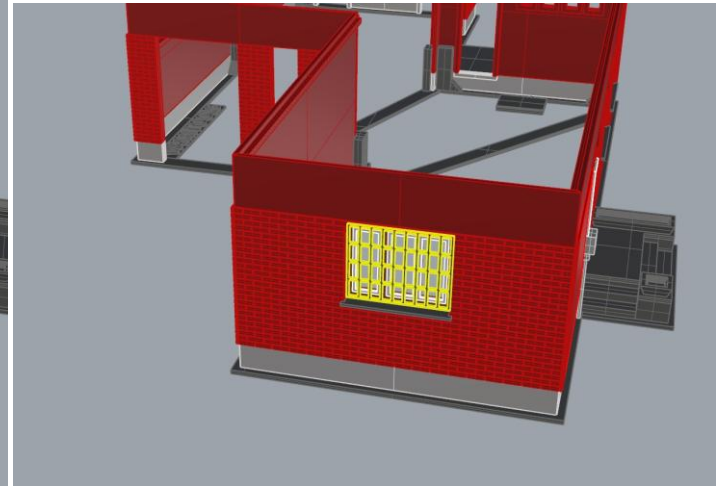
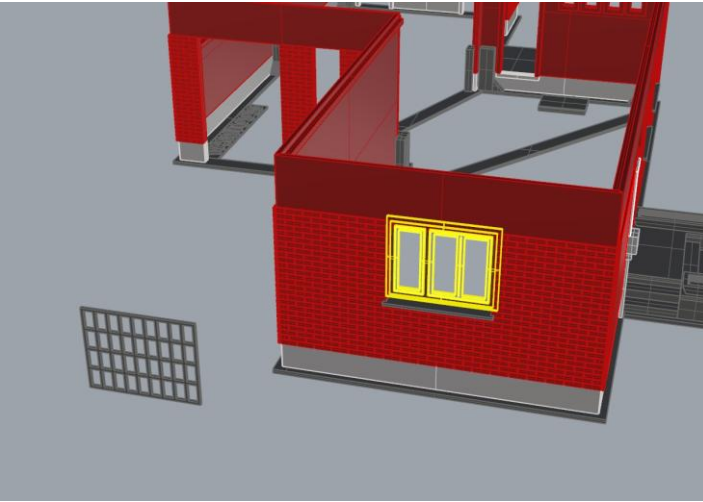
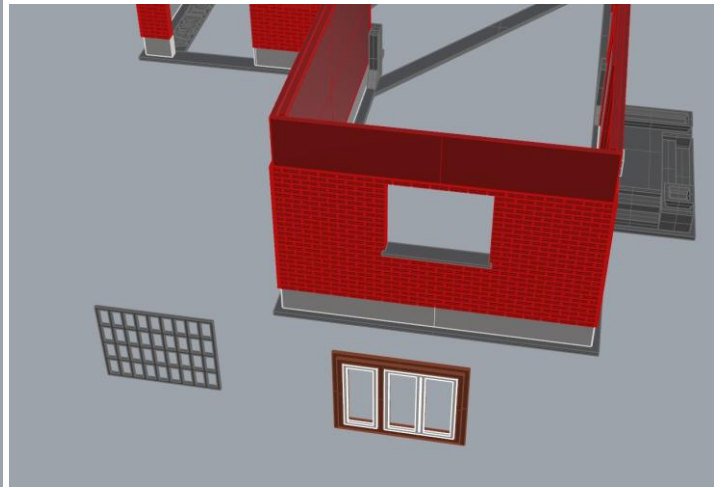
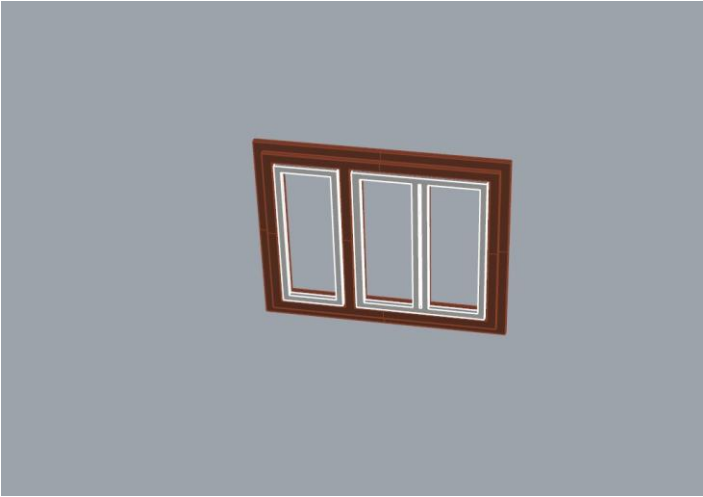


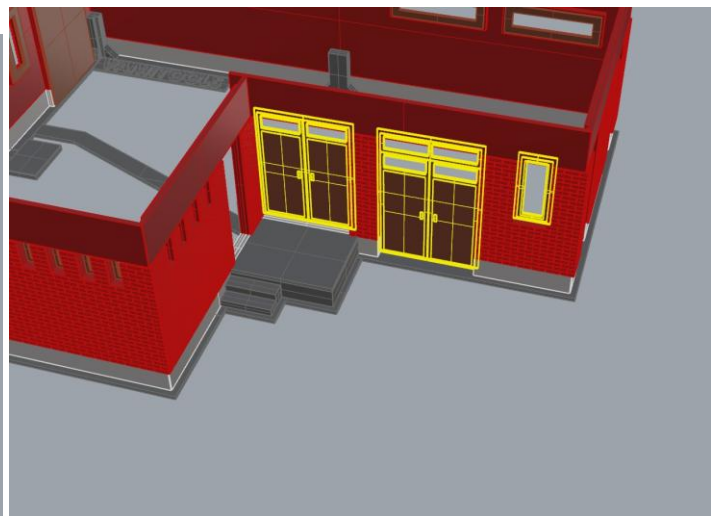
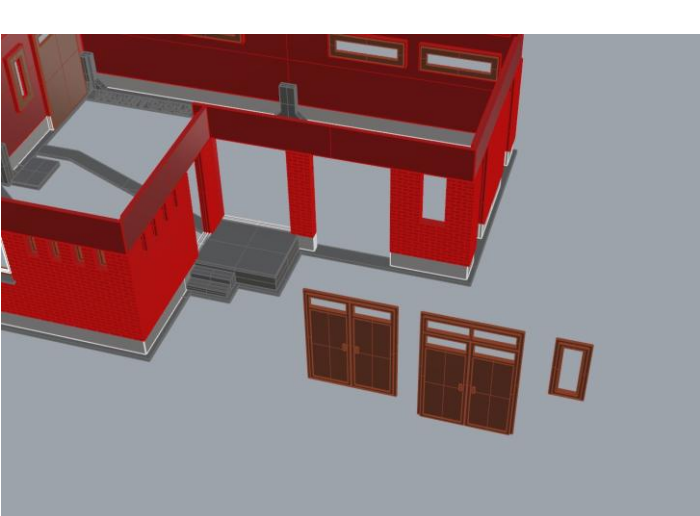
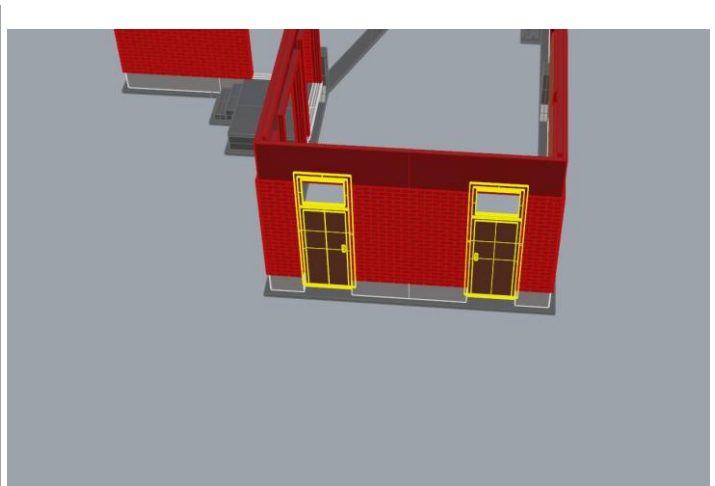
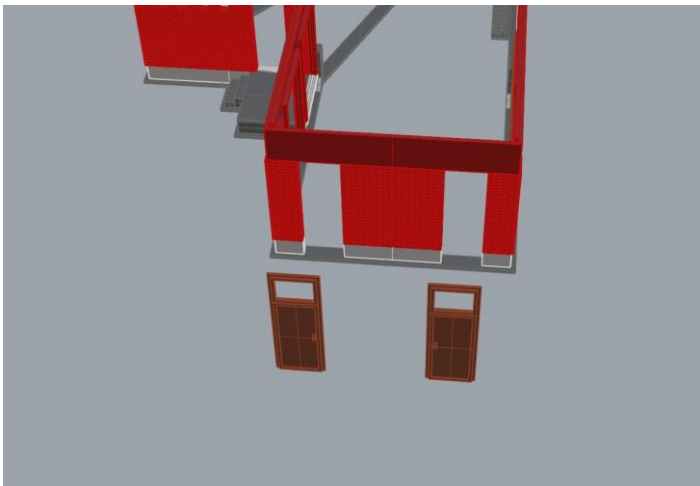
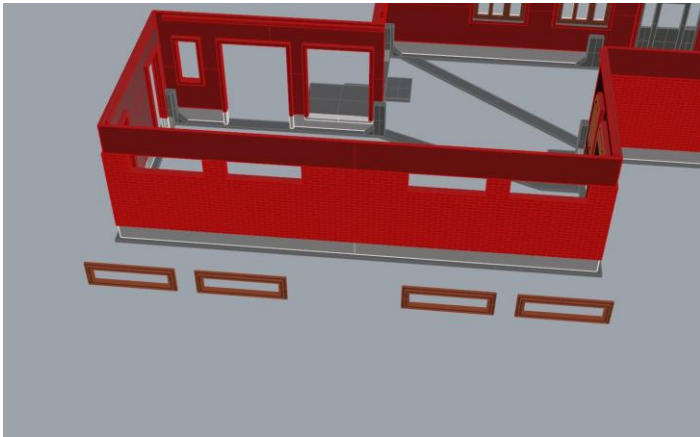
Az alábbi ablakból három hasonló van, viszont kettő ebből egyforma. Ezek kerülnek ide.

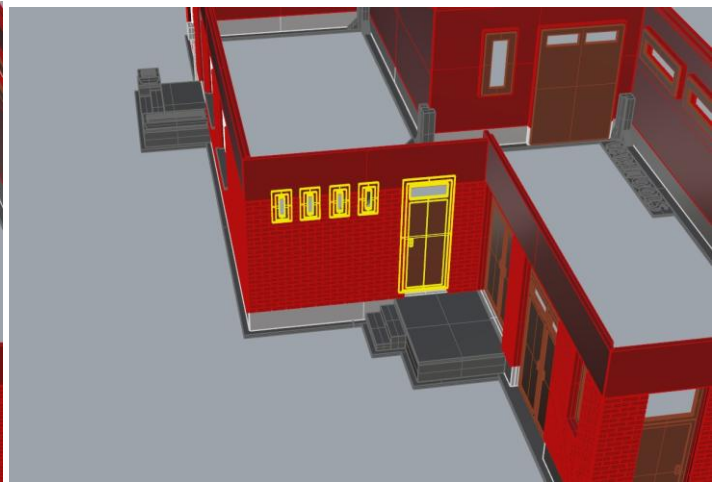
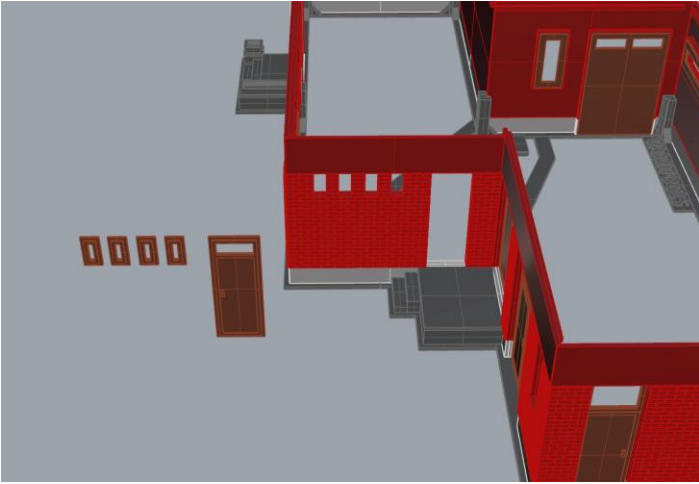




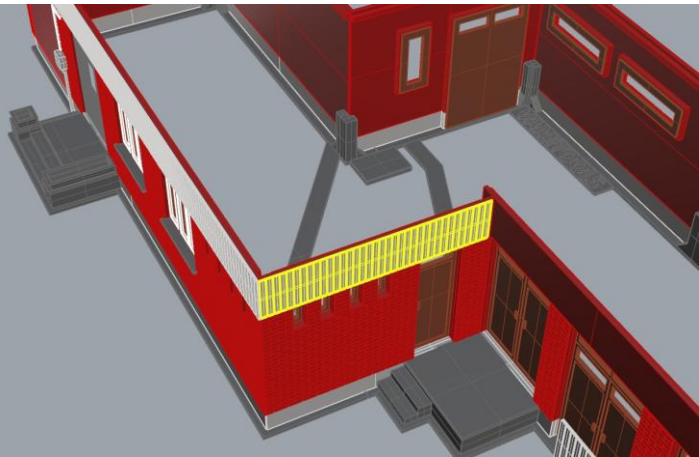


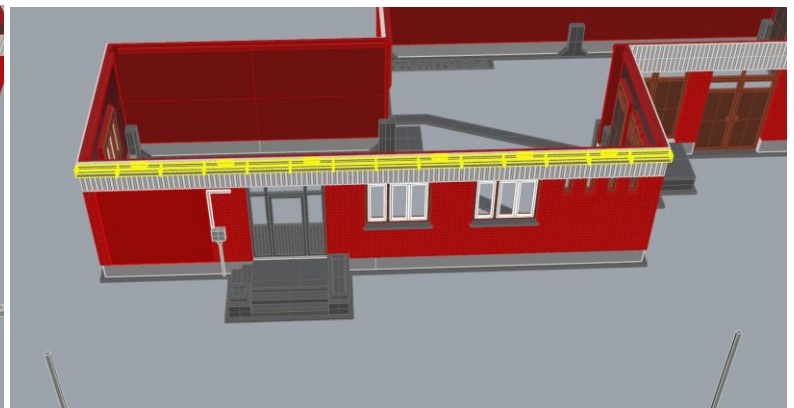
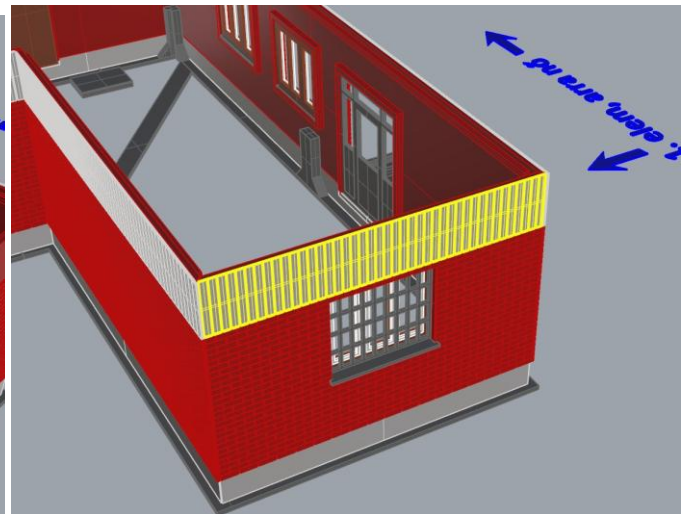
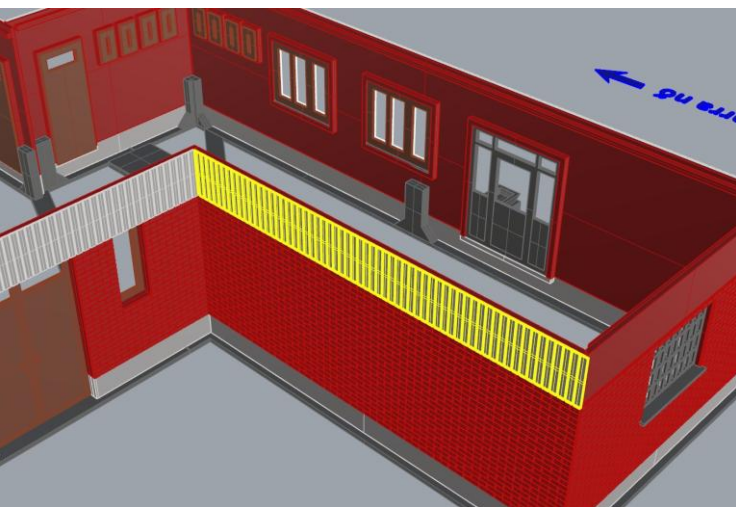
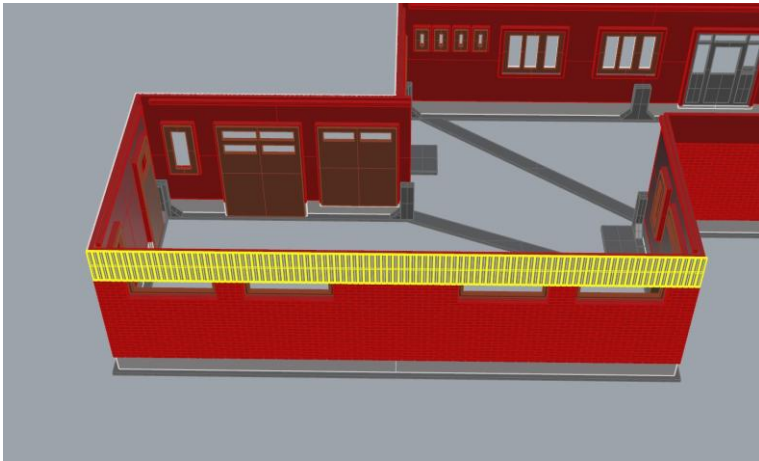
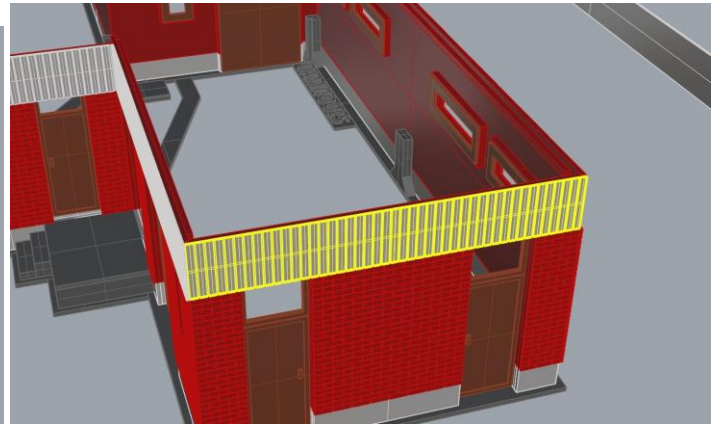
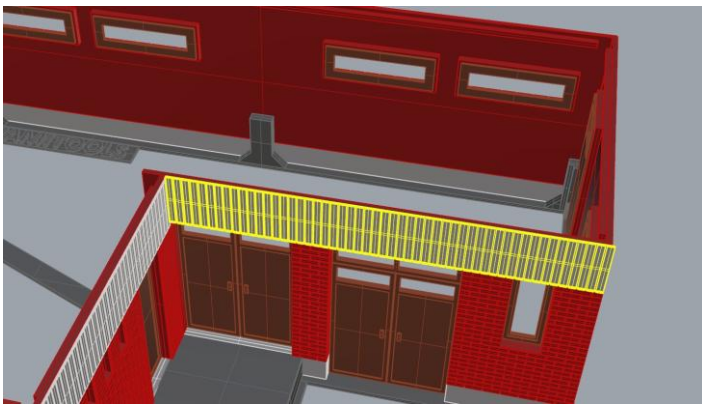


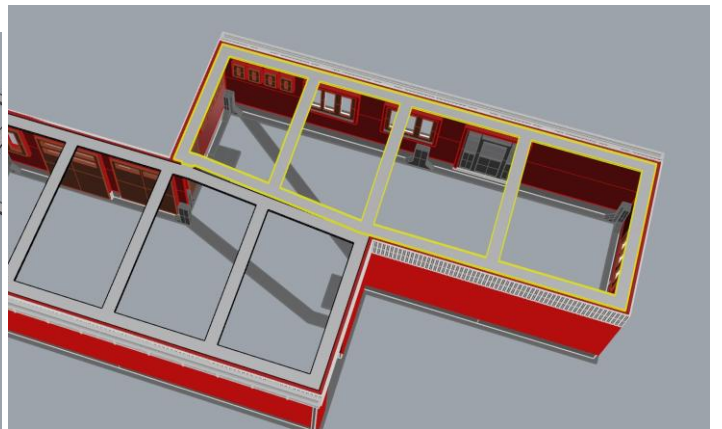
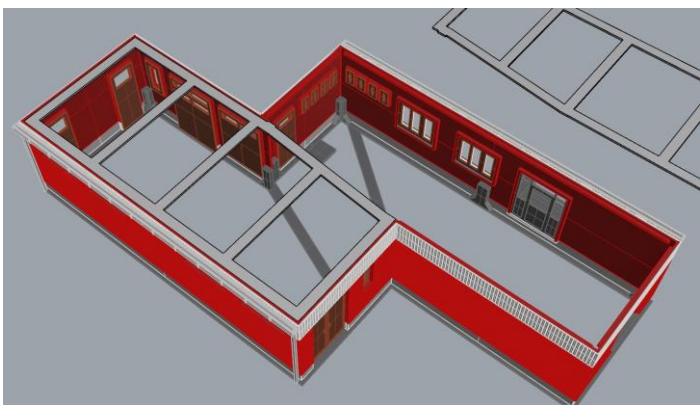
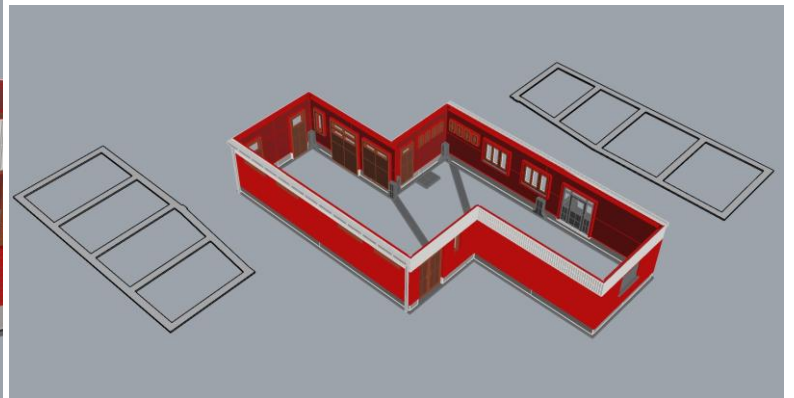
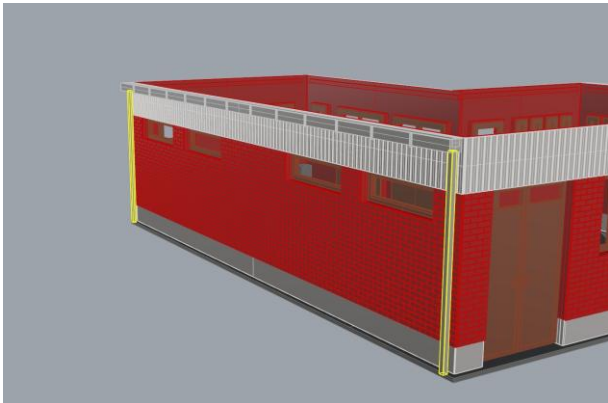
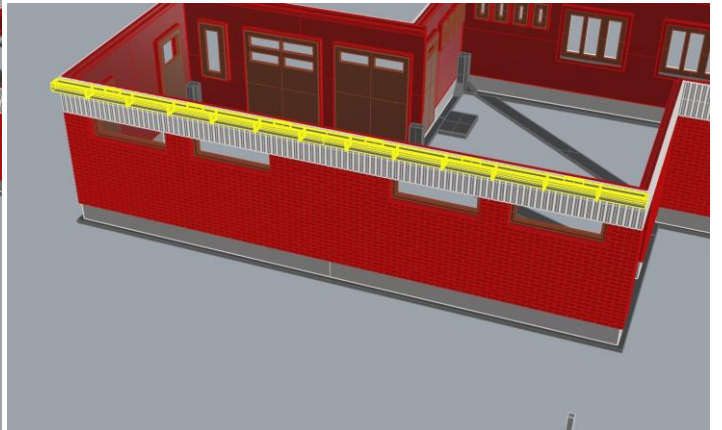
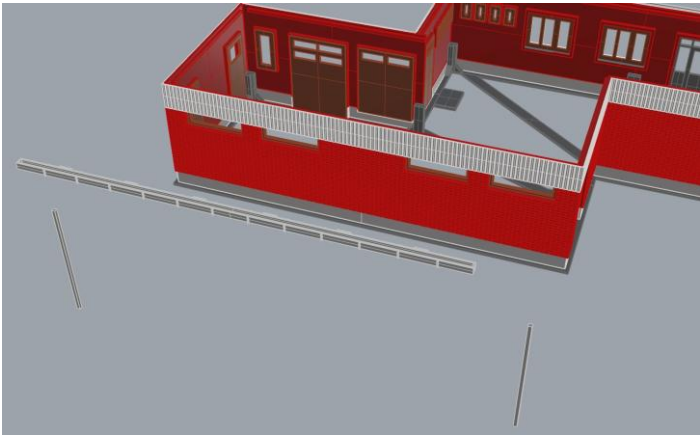
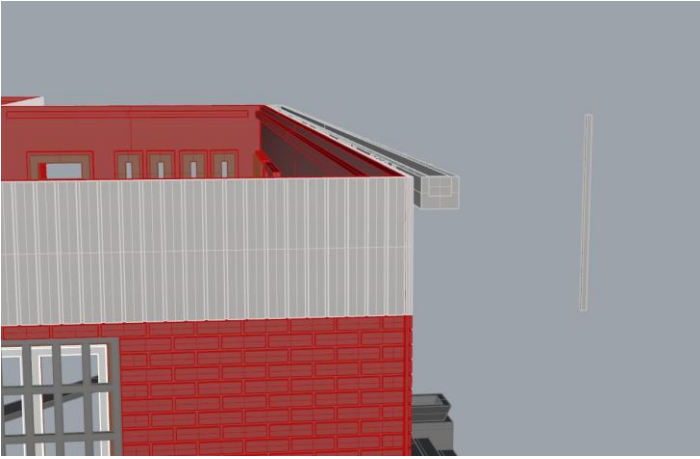


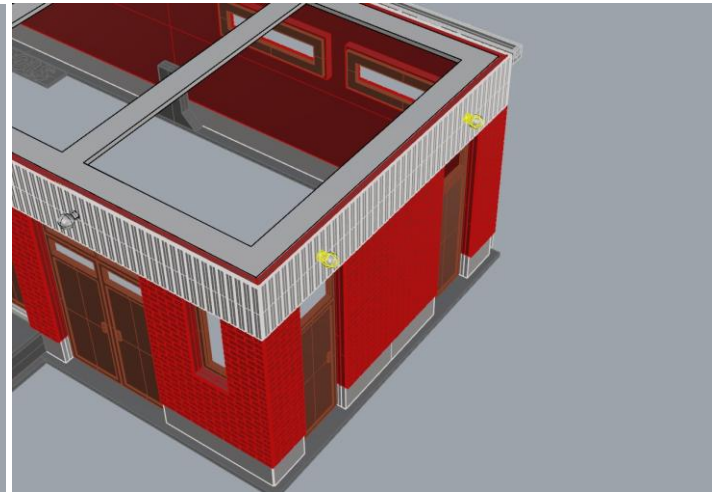
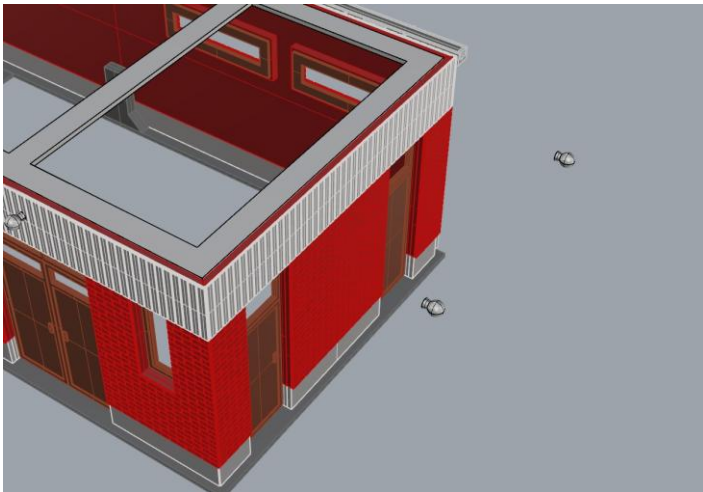
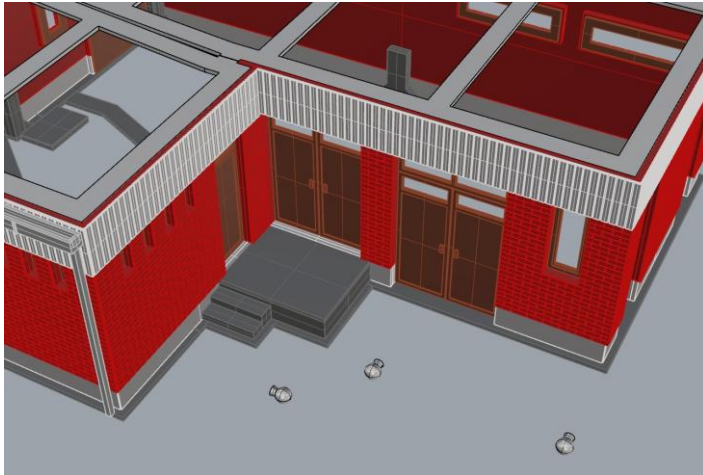
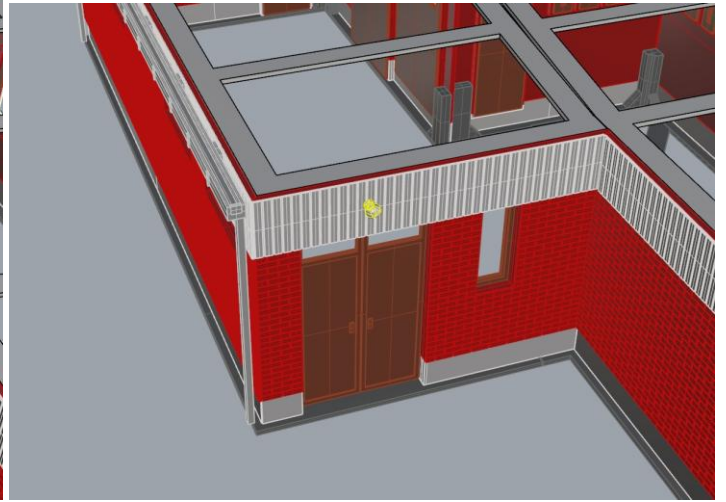
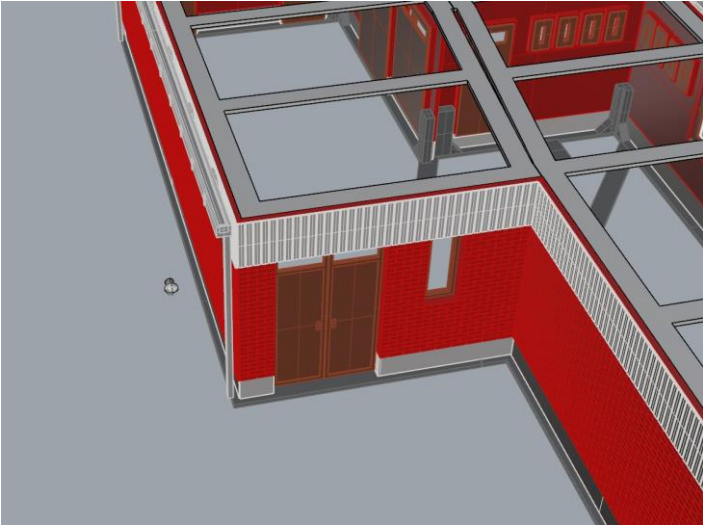


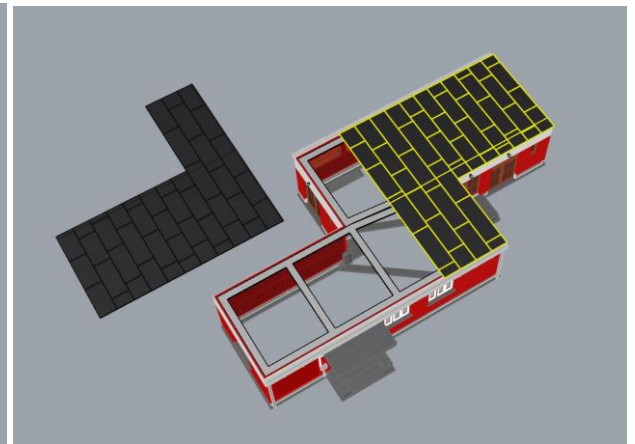
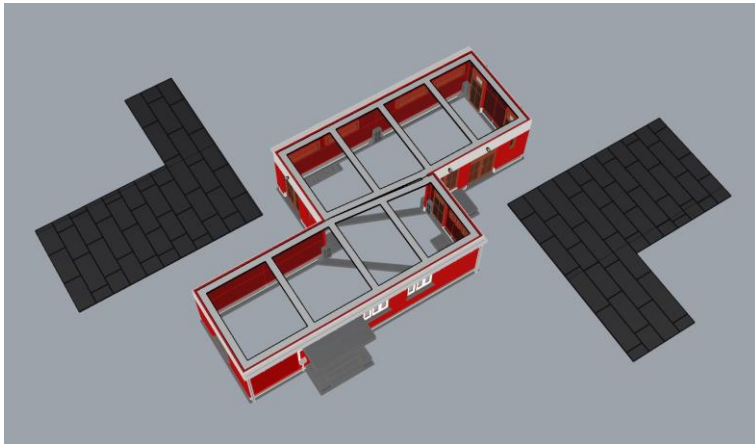
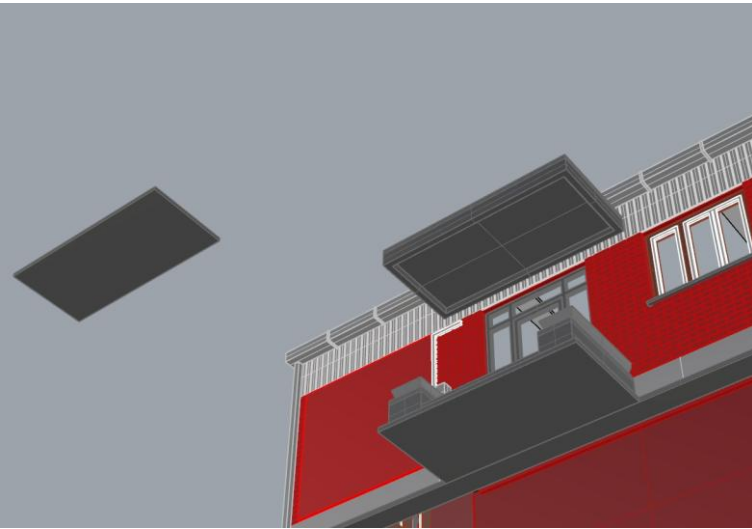
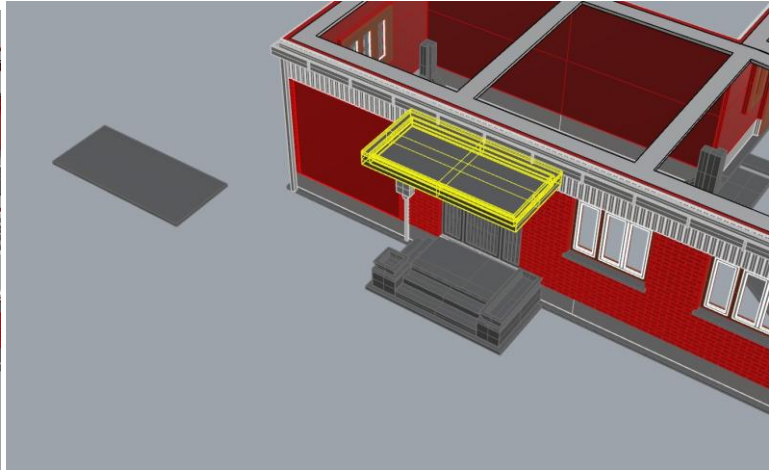
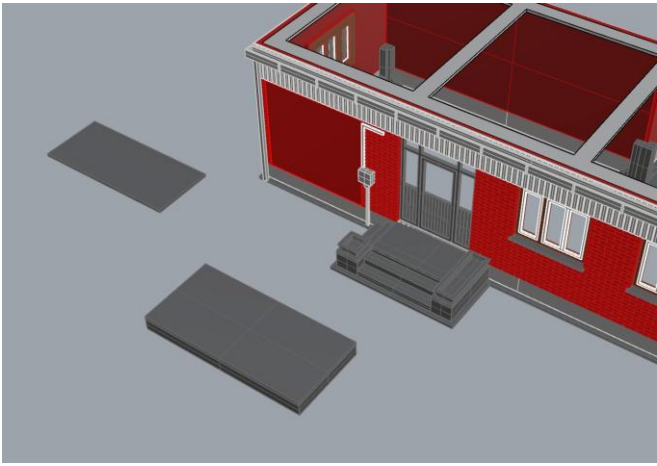
A tető alá kerülő díselemek is számozva vannak. Az alábbi képen az első látható, a többi pedig jön sorban utána.

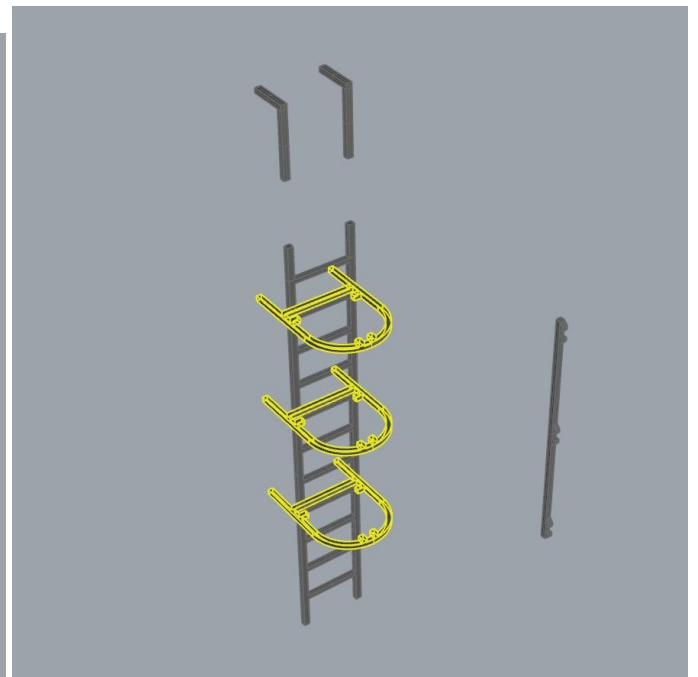
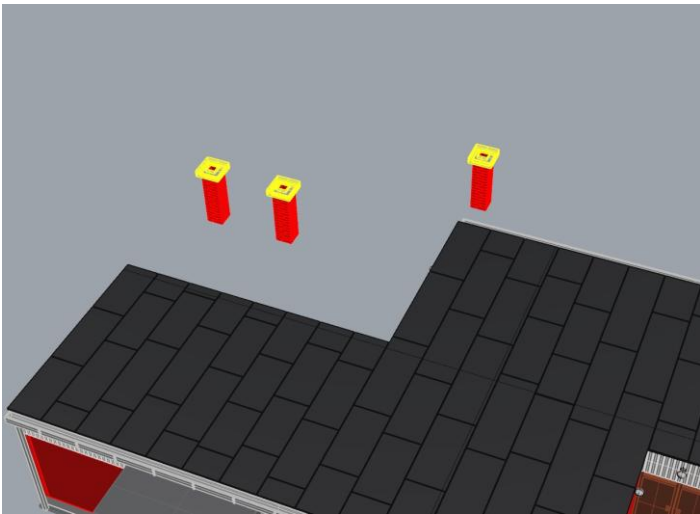
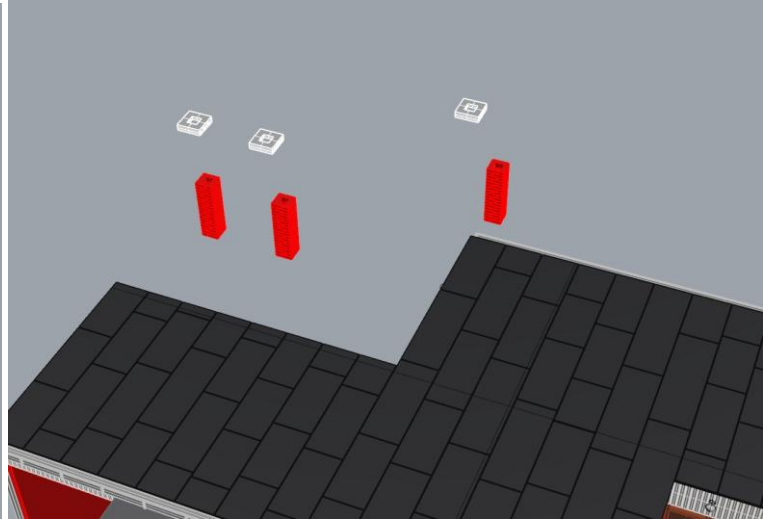
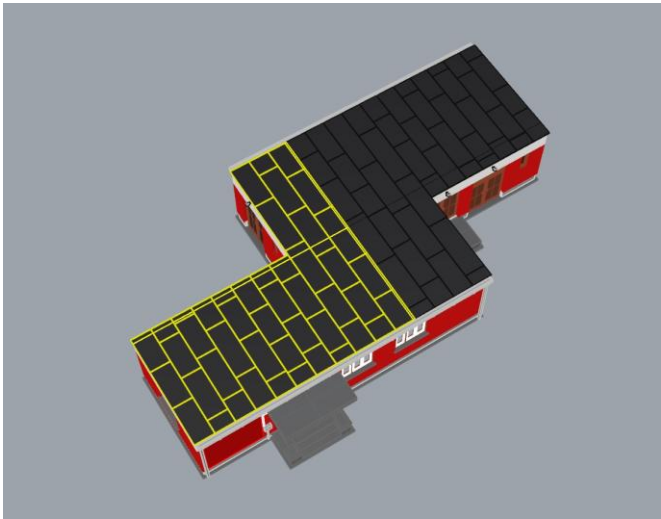


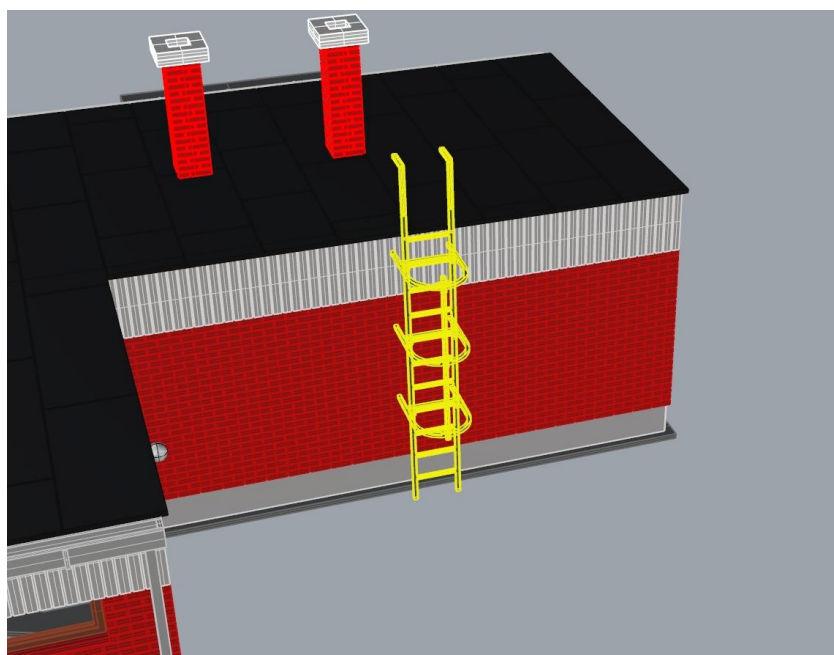
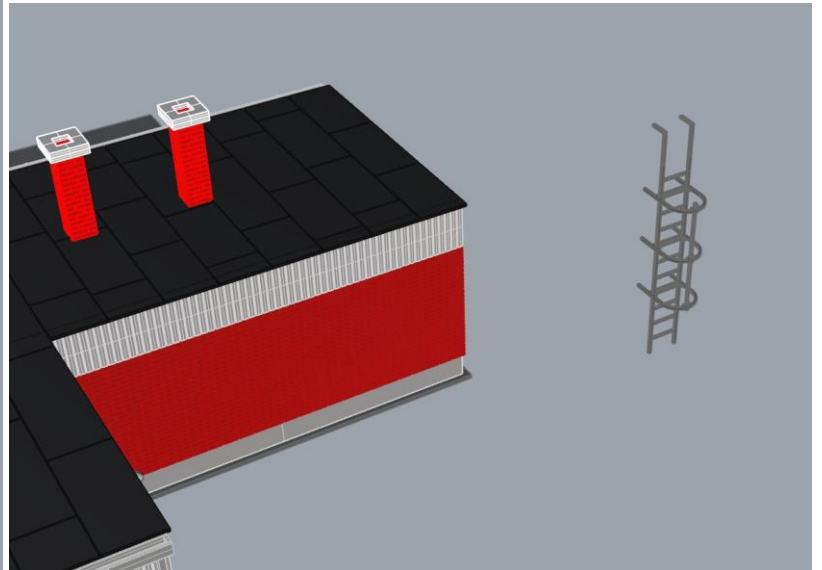
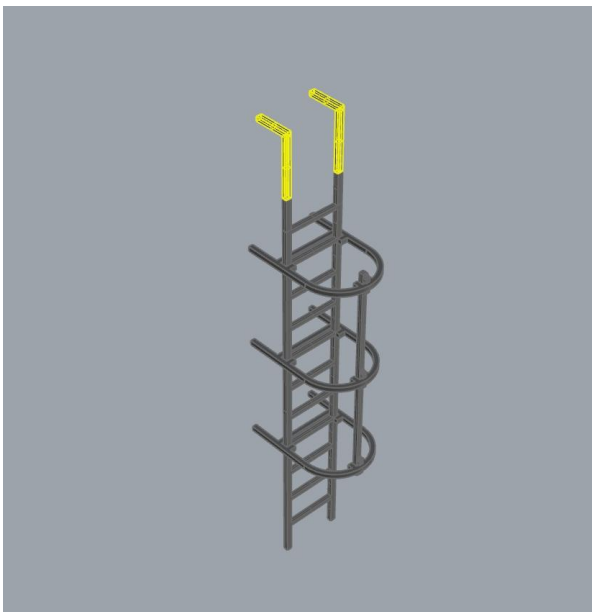
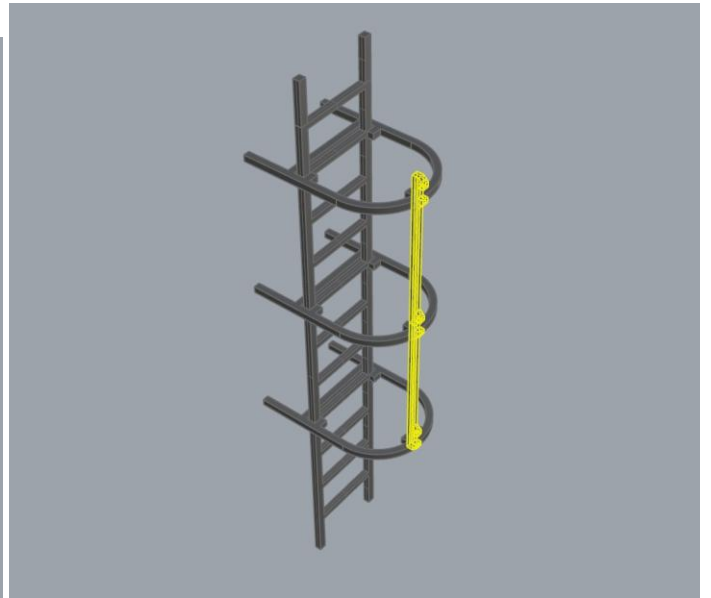
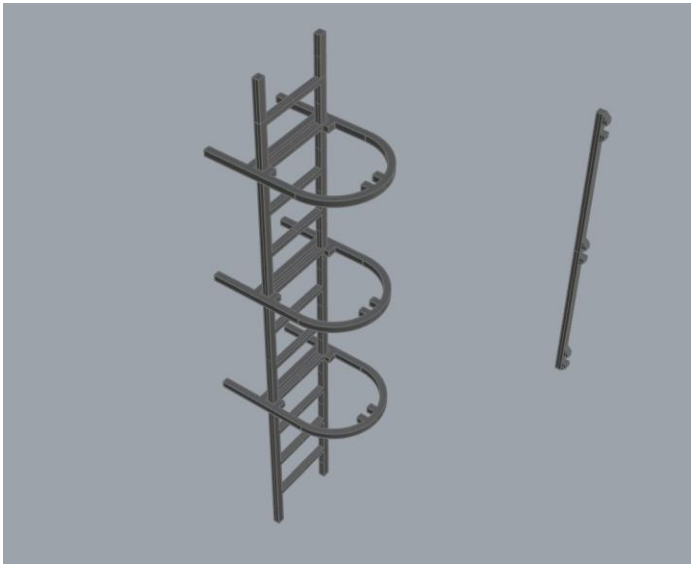












Készen is vagyunk.

