

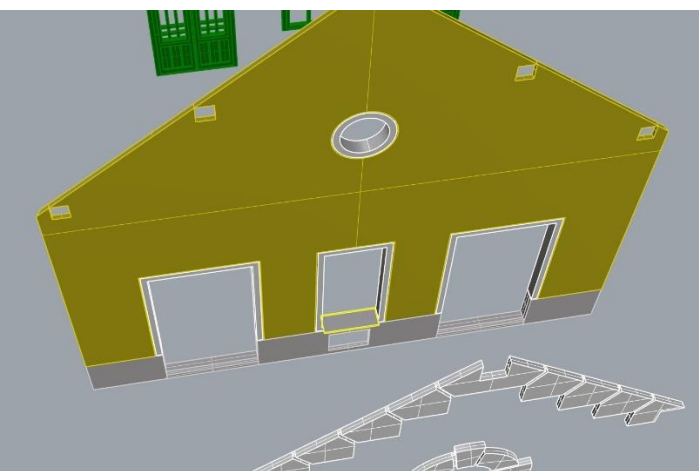
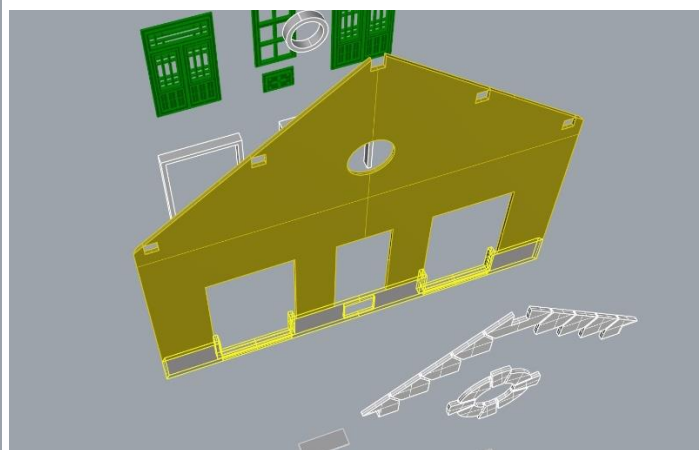
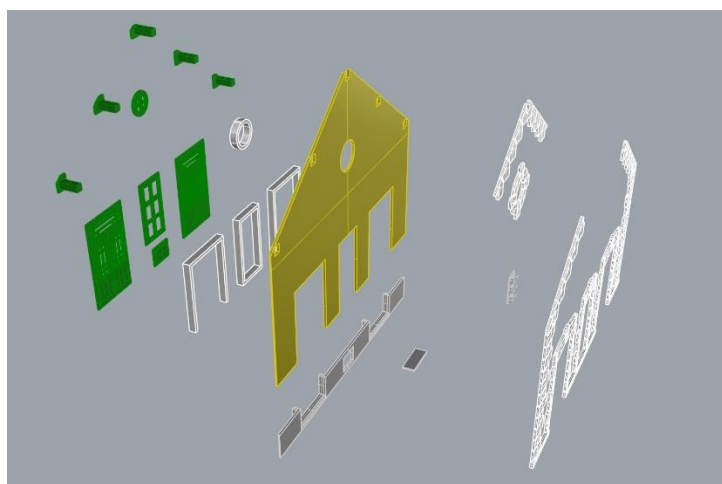
VAMITTOOLS Vasúti állomásépület TT – 528-as típus



Maketrasztót (Rewell stb.) NE használjanak termékeinkhez, mert az oldószere kárt tehet az egyes alkotóelemekben (főleg a vékonyakban)! A következő ragasztókat ajánljuk: kék tubusos Technokol Rapid (acetonmentes), kétkomponenses ragasztó (Epoxy Rapid, Araldite stb.). Bővebb információ a ragasztással, festéssel stb.-vel kapcsolatban a minden termék oldalán elérhető általános tájékoztatóban van!

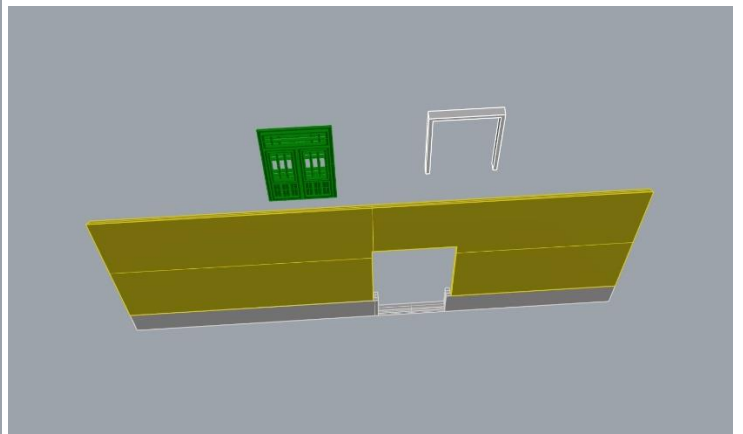
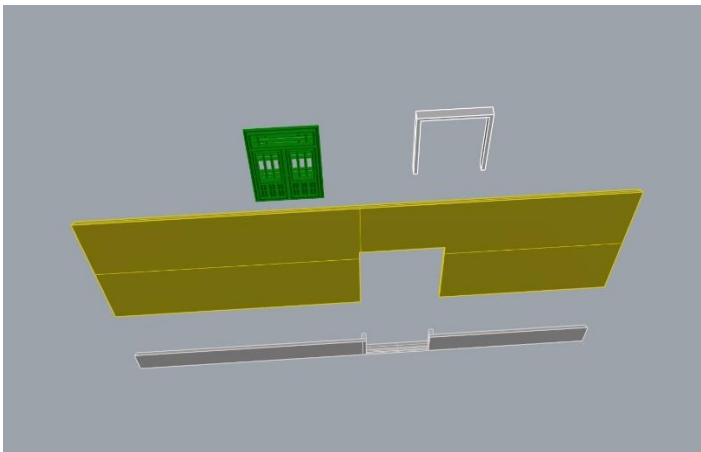
Az összerakást az oldalak külön-külön történő összerakásával kezdjük. Minden falrésznél a sima (fényes) oldal néz kifelé! Kövessük a képeken látható lépéseket. Célszerű az épület belső oldalára karton maszkolókat tenni, hogy a fény ne világítsa át az épület falait. A karton maszkolókat az útmutató külön nem jelzi!

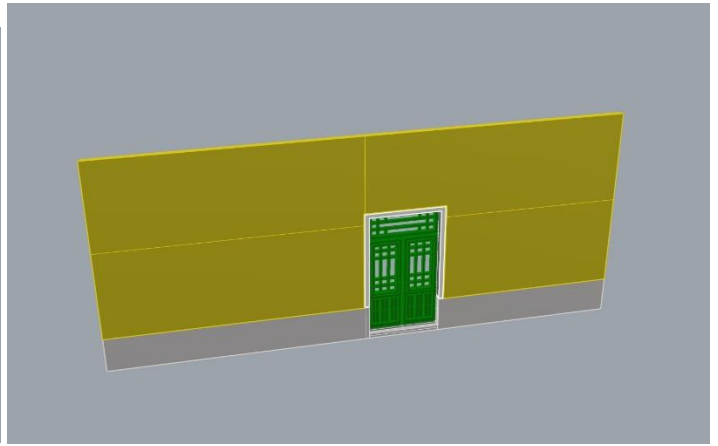
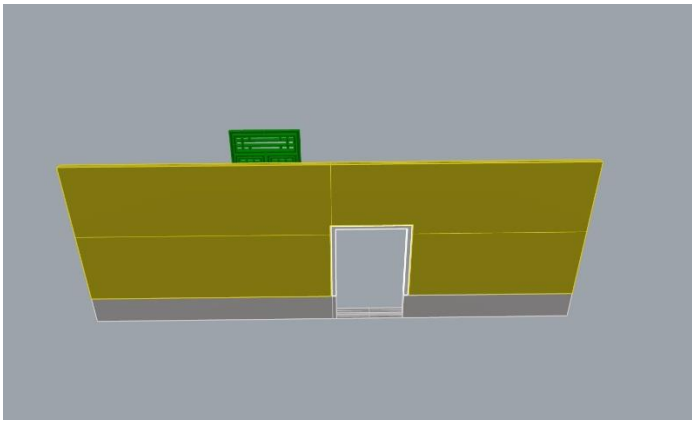
1. oldal:



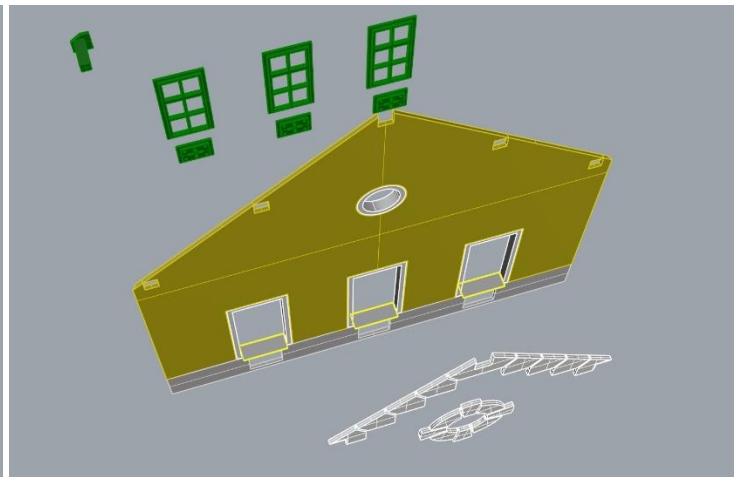
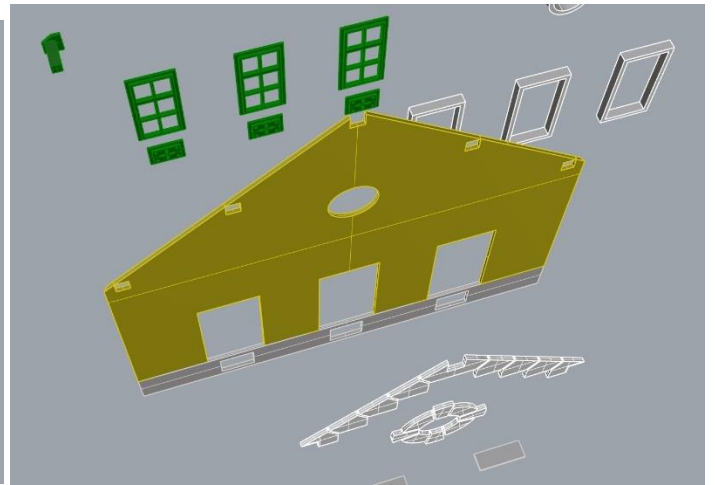
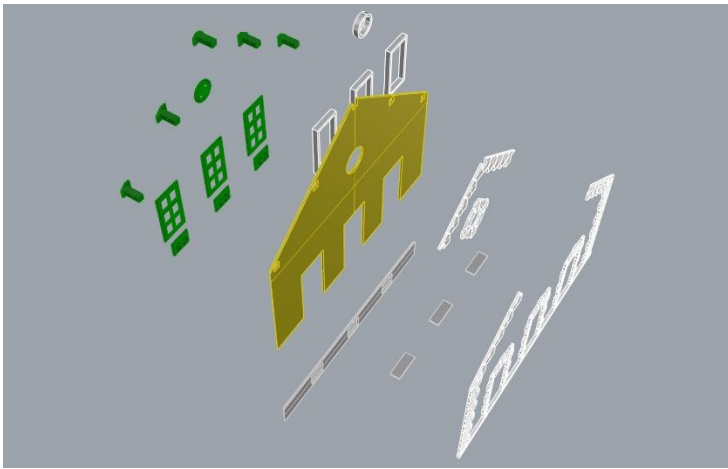


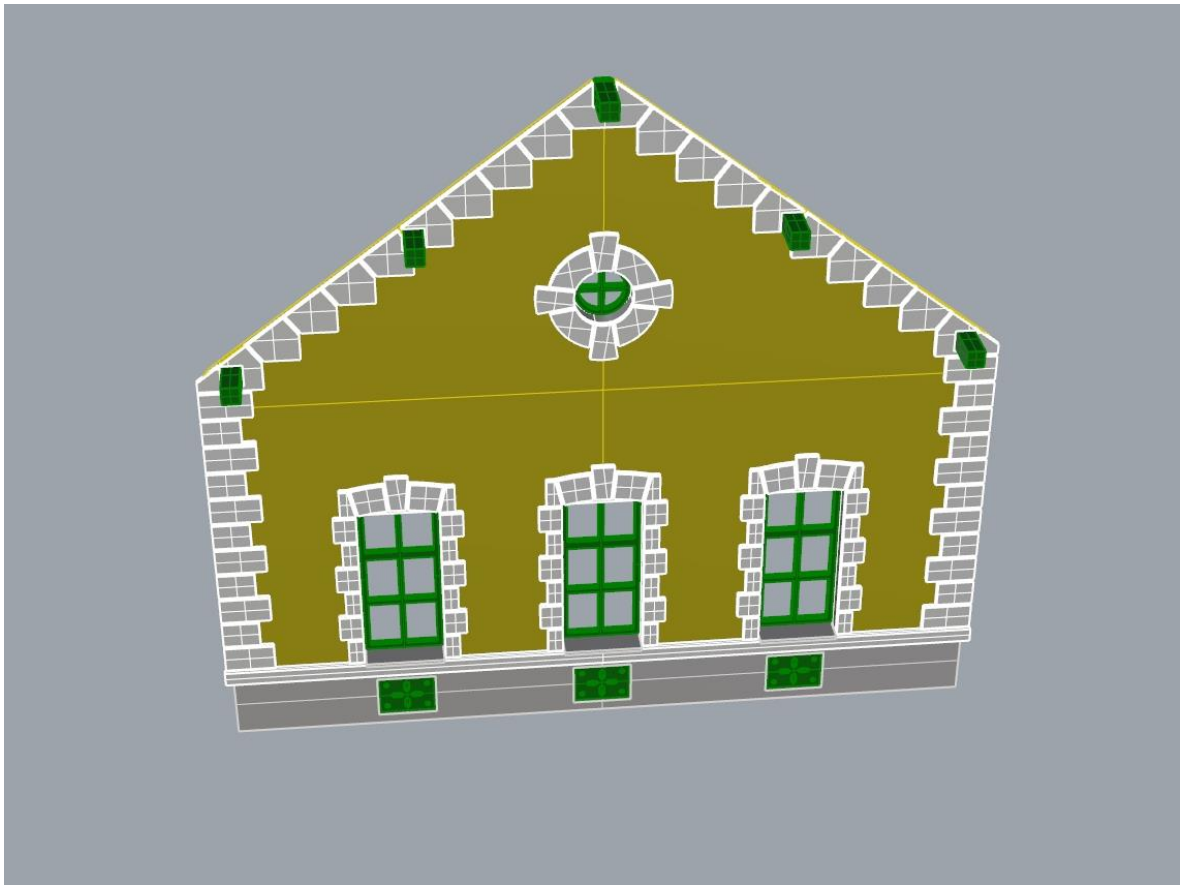
2. oldal:



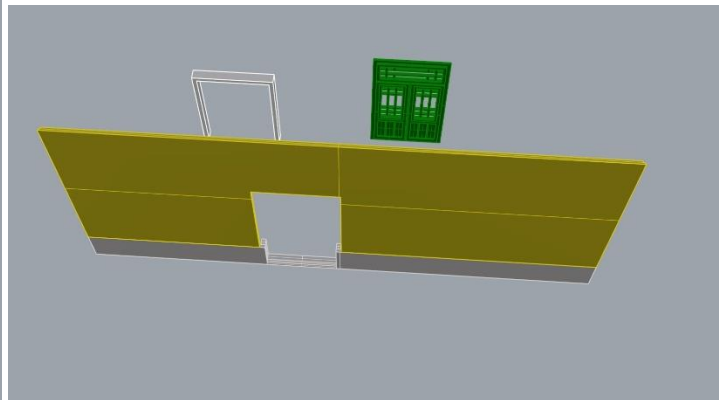
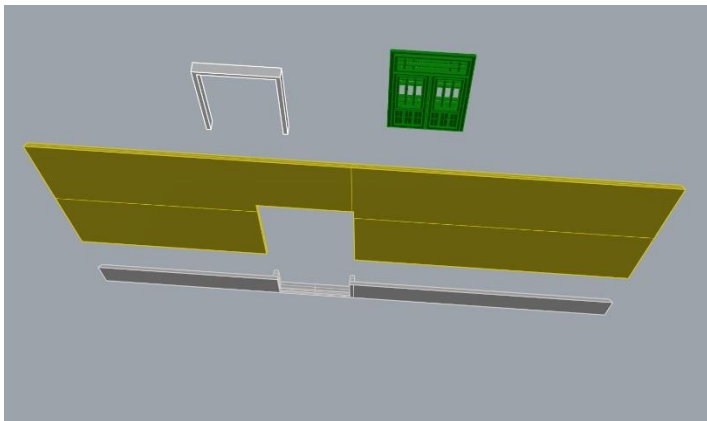


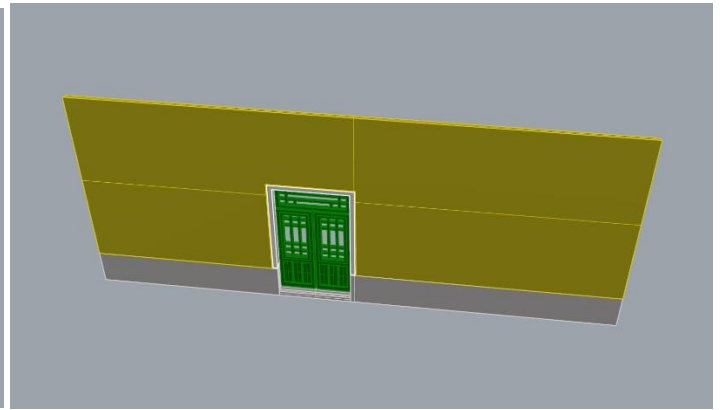
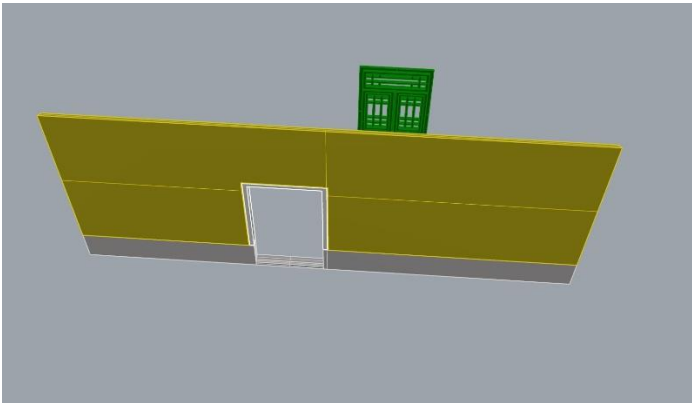
3. oldal:



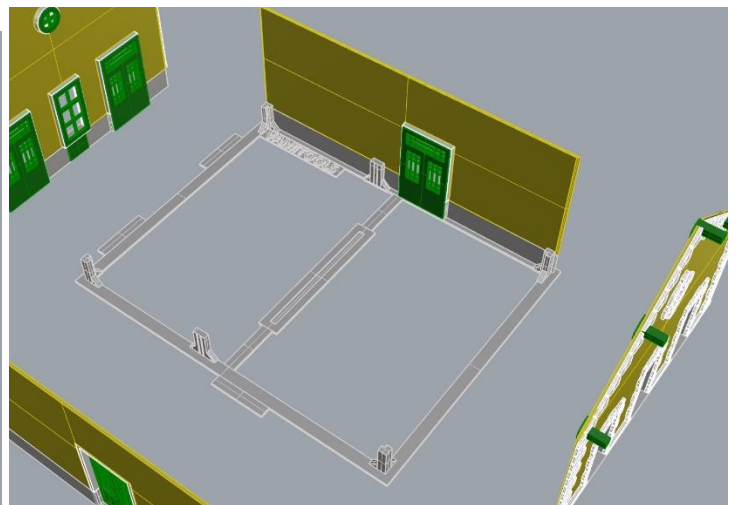
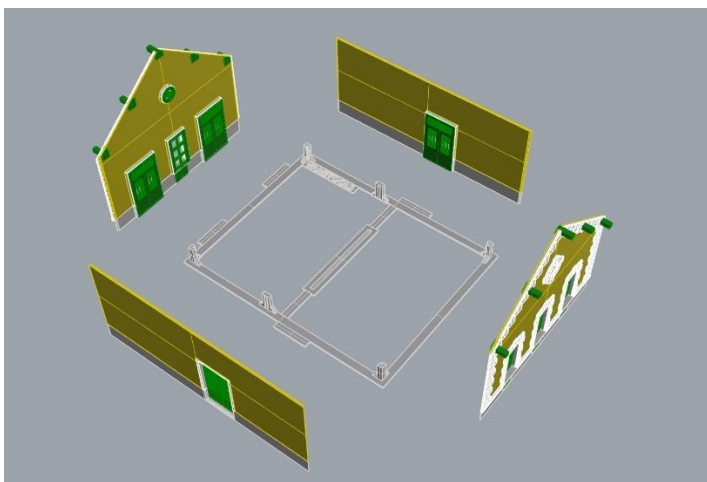
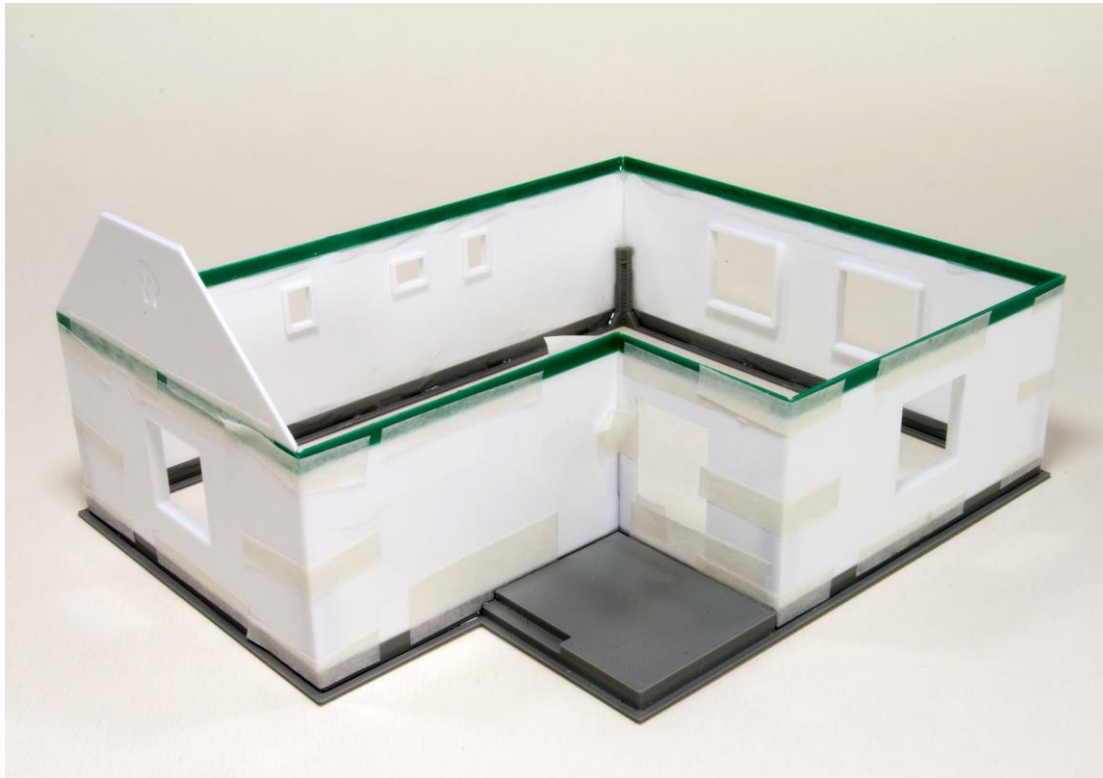


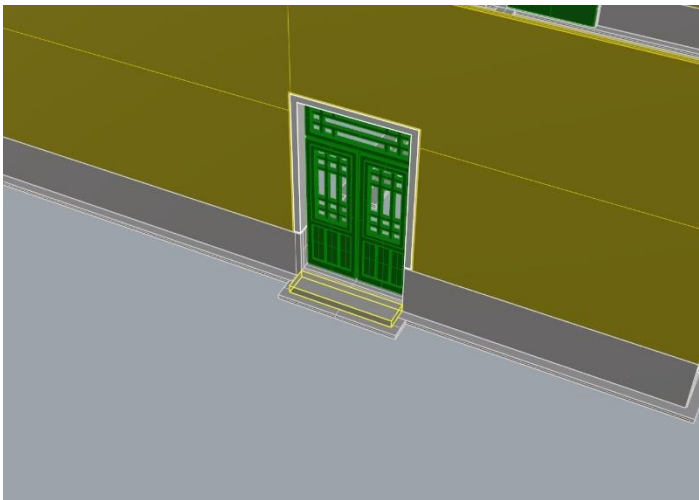
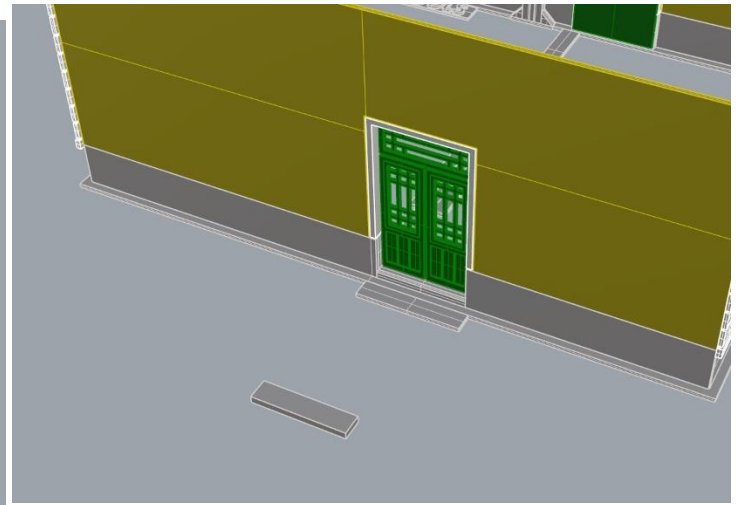
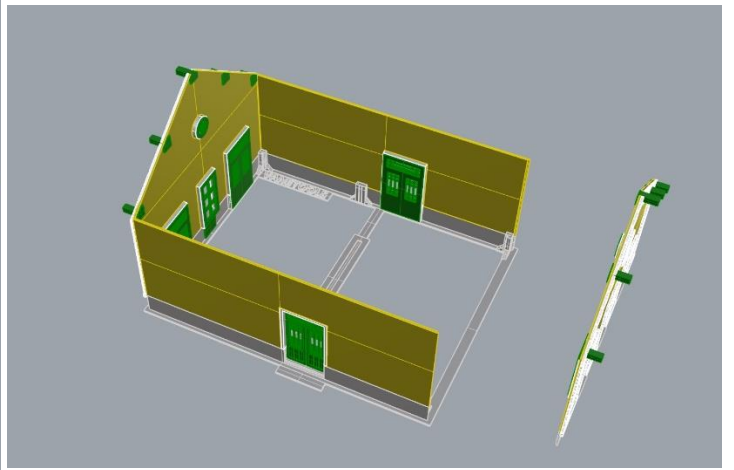
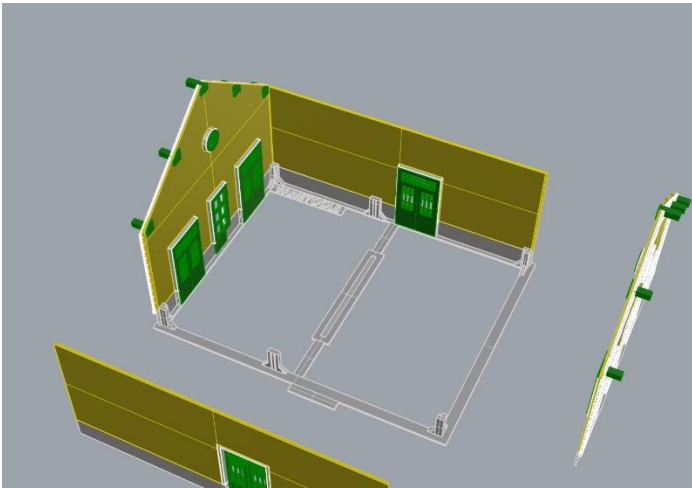
4. oldal:

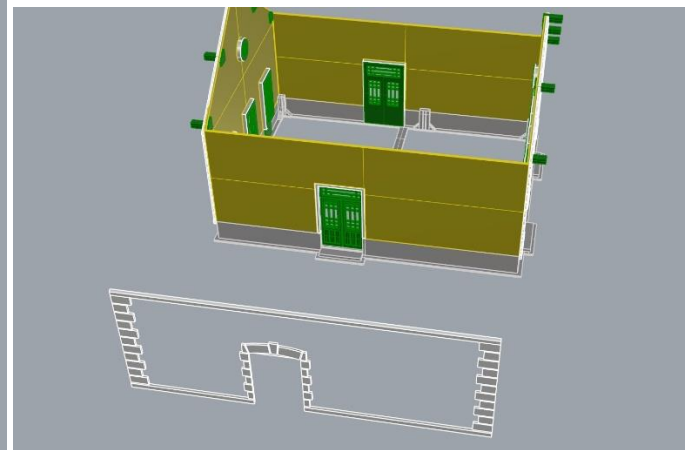
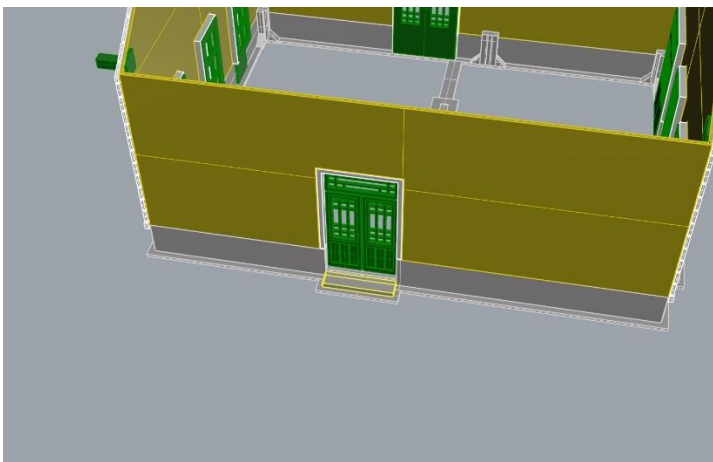
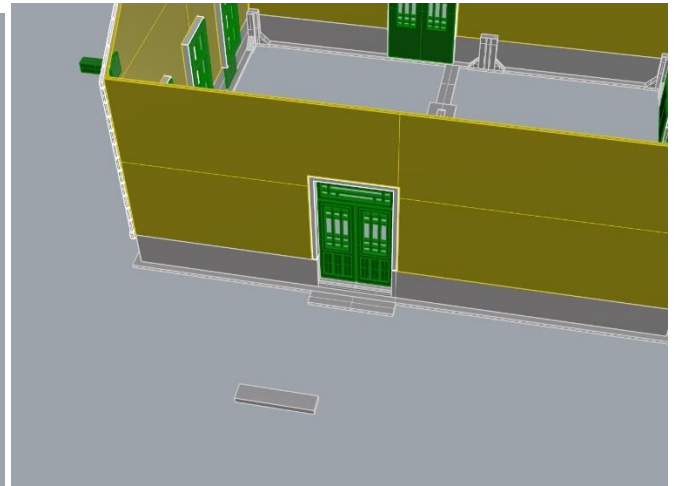


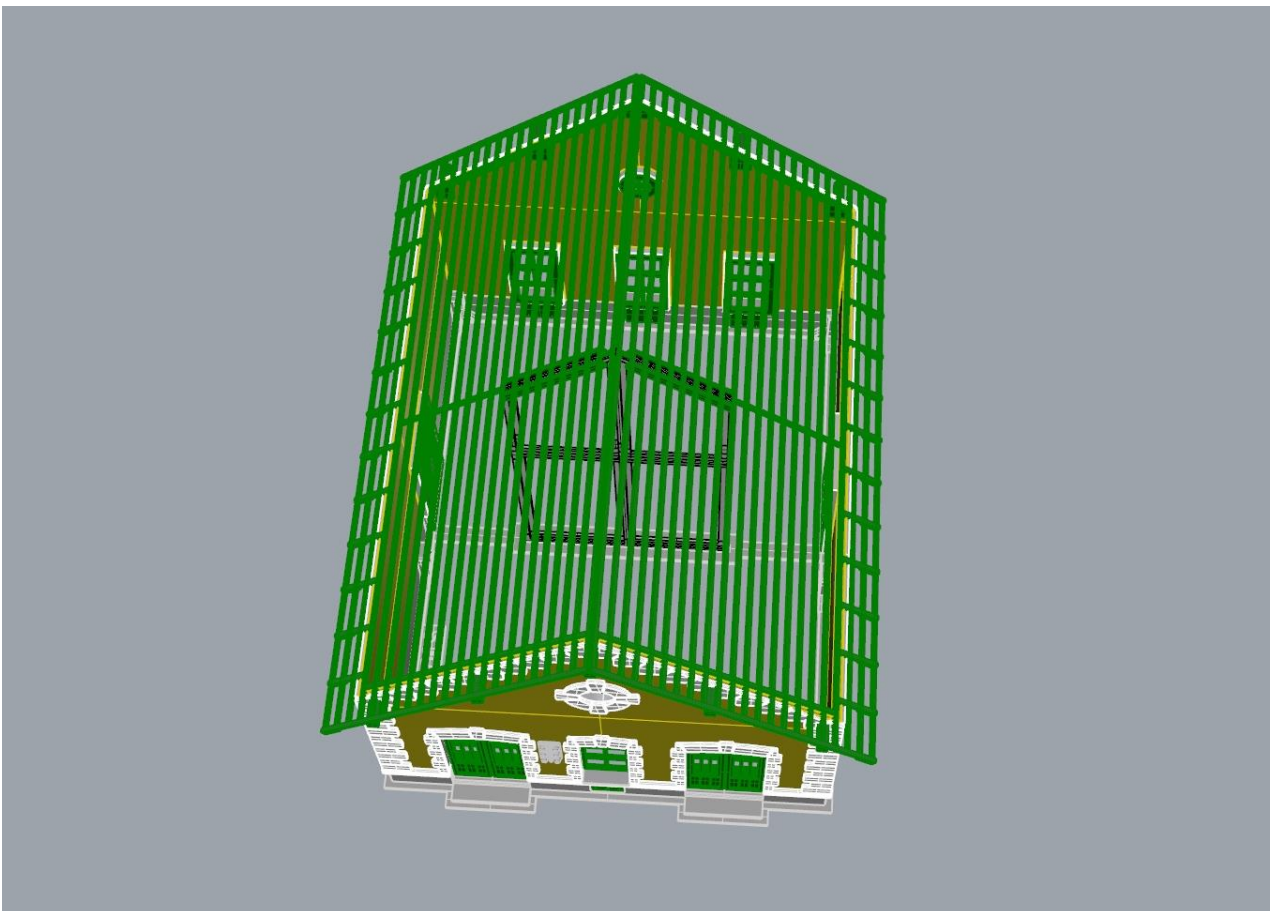
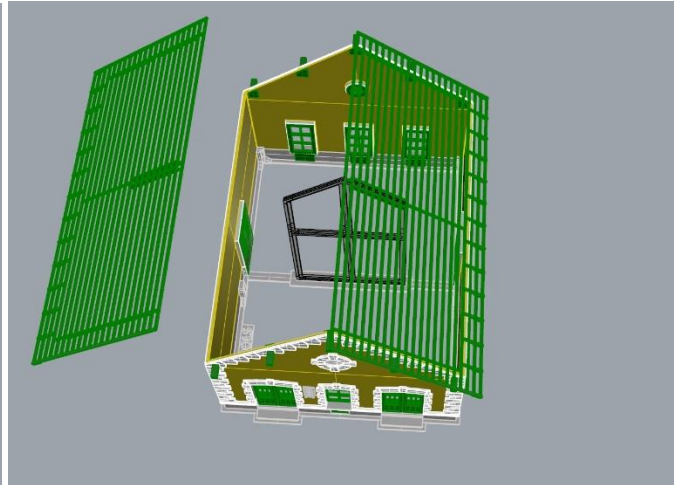
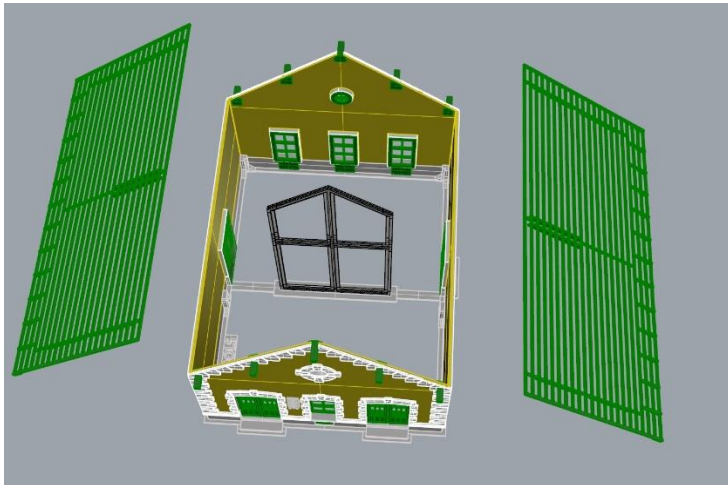
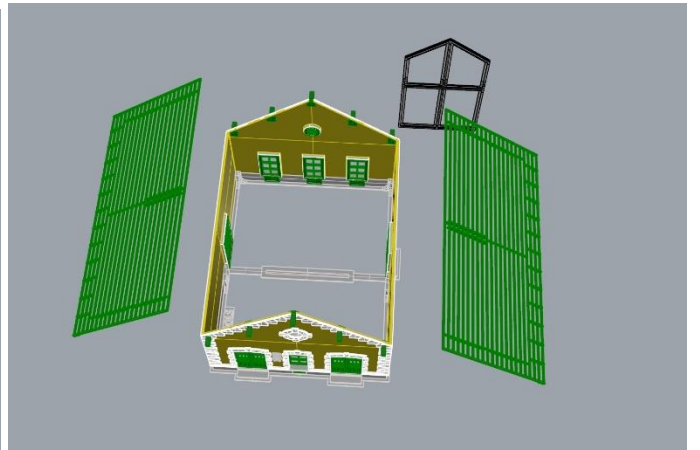
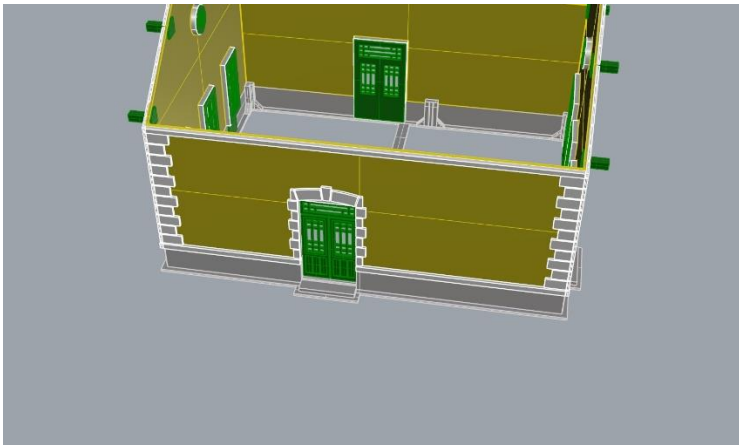


Ragasztási segédletként a falakat ragasszuk össze ideiglenesen az alábbi képen látható módon Scotch Magic- vagy Krepp takarószalaggal, így a falak a későbbi ragasztás során nem fognak elmozdulni. Egy-egy saroknál akár több helyen is megragaszthatjuk a ragasztószalaggal, így még biztosabb tartást kapunk. (A kép illusztráció)

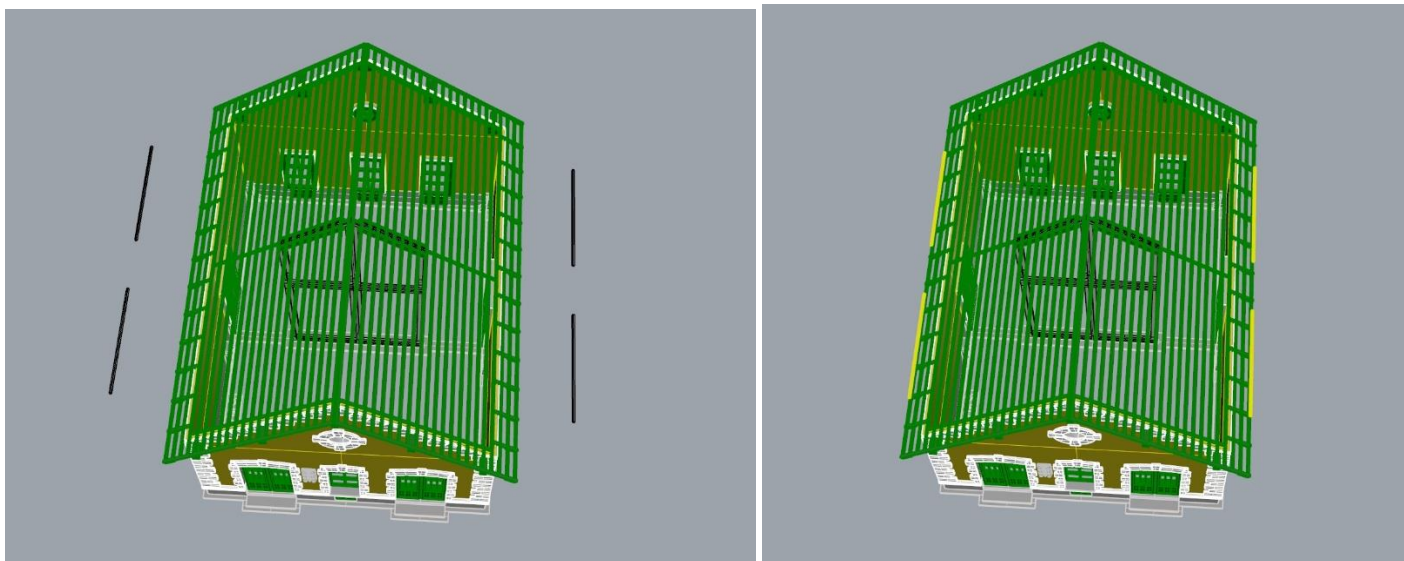


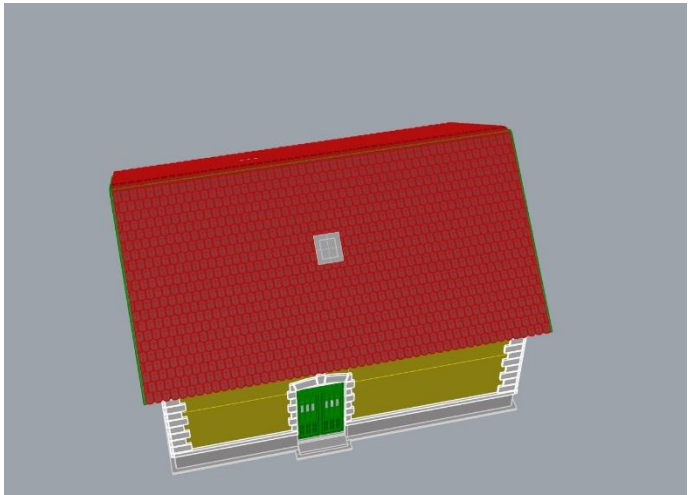
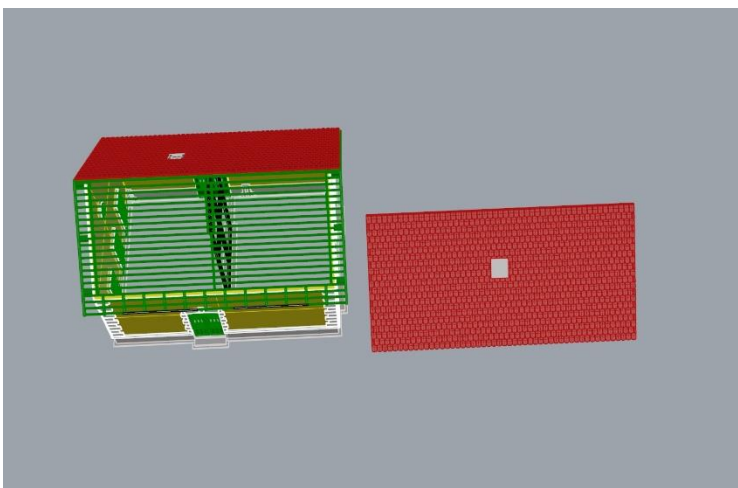
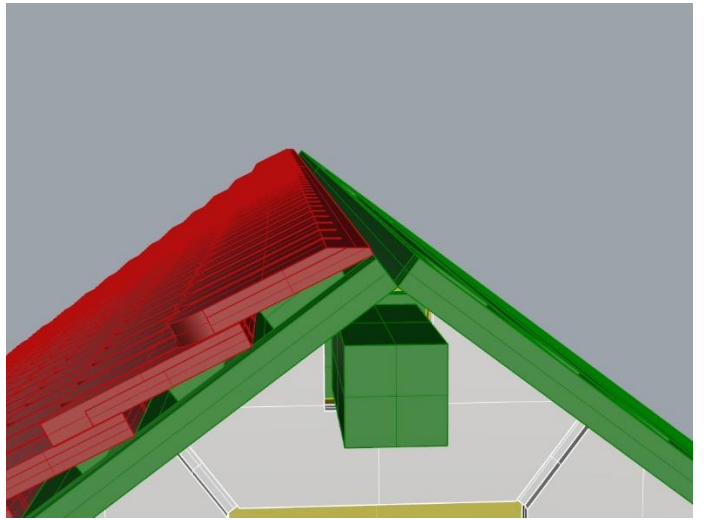
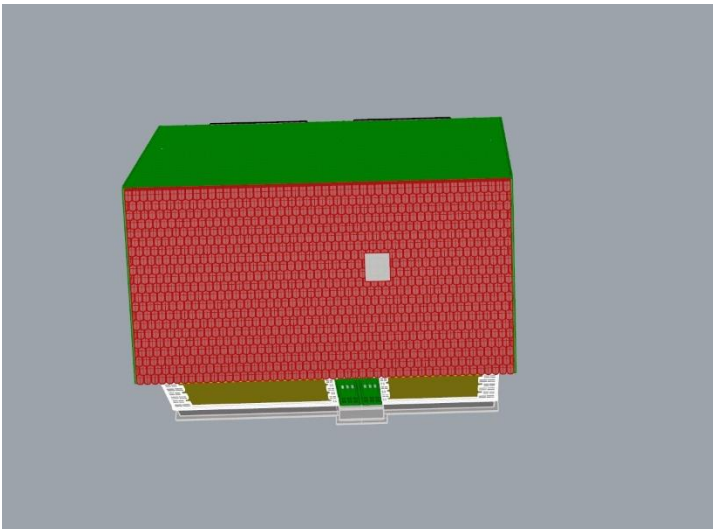
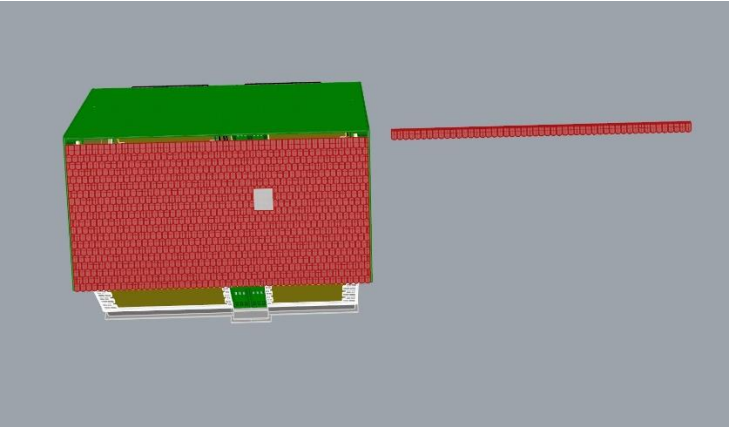
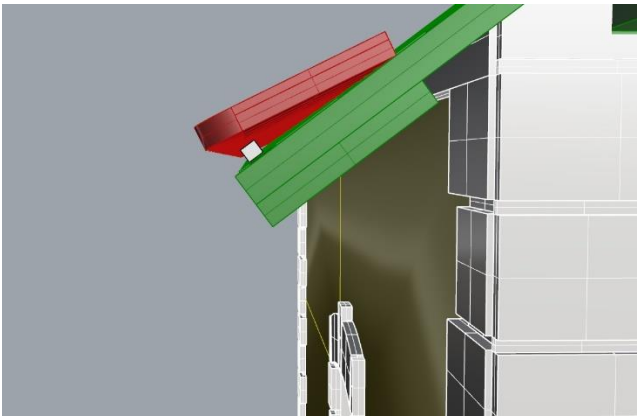
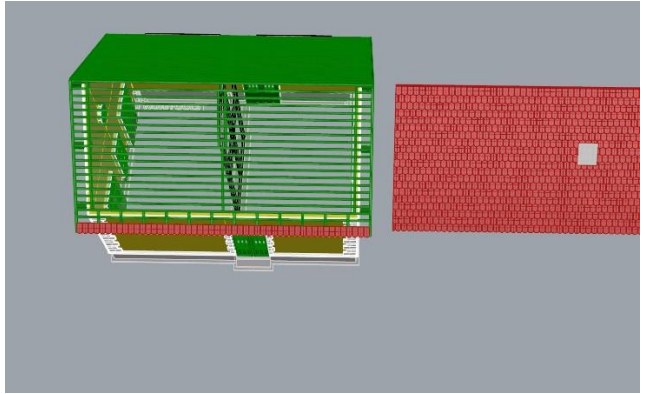
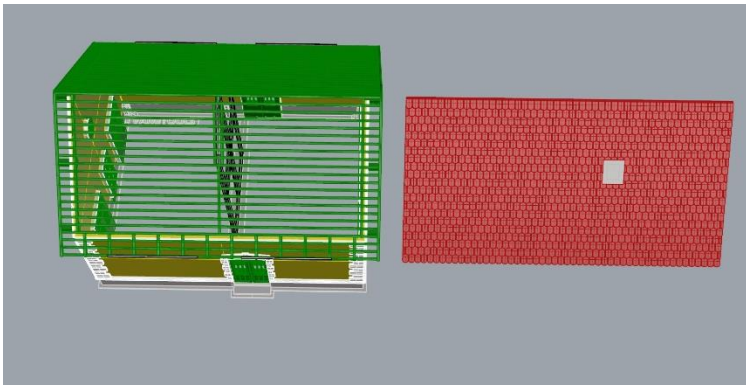


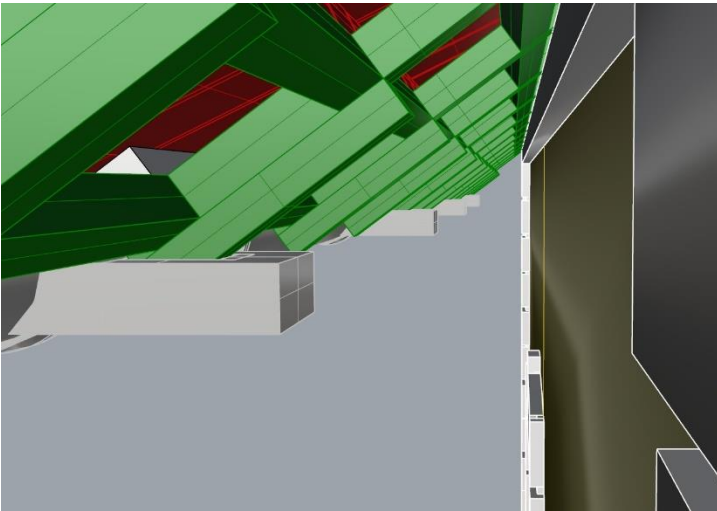
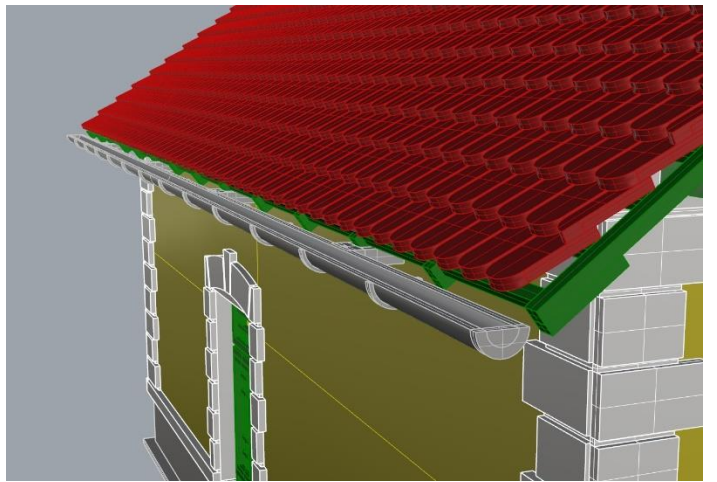
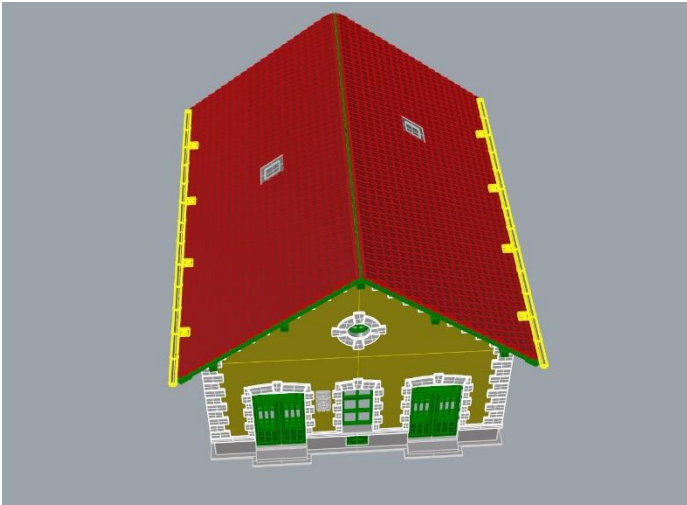
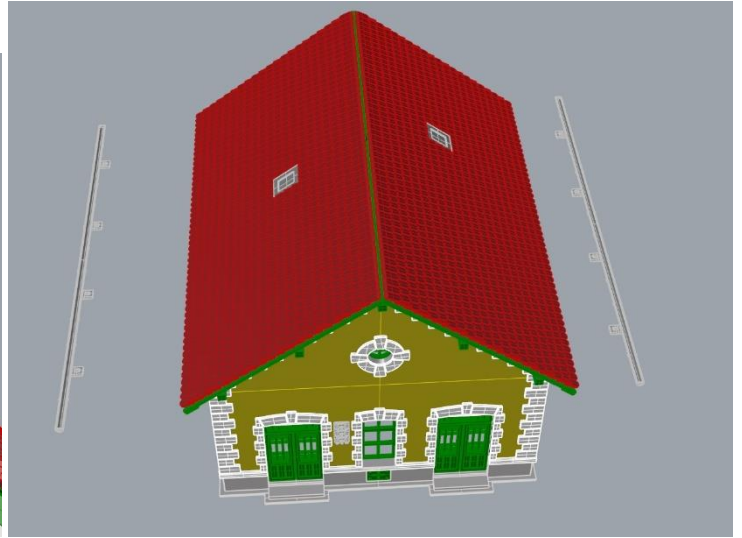
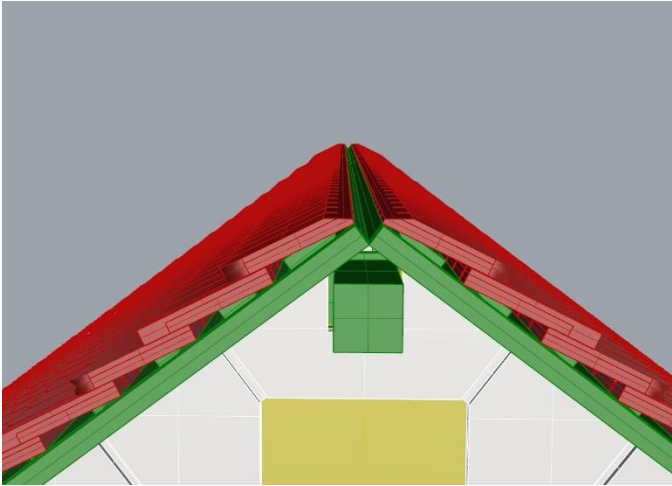


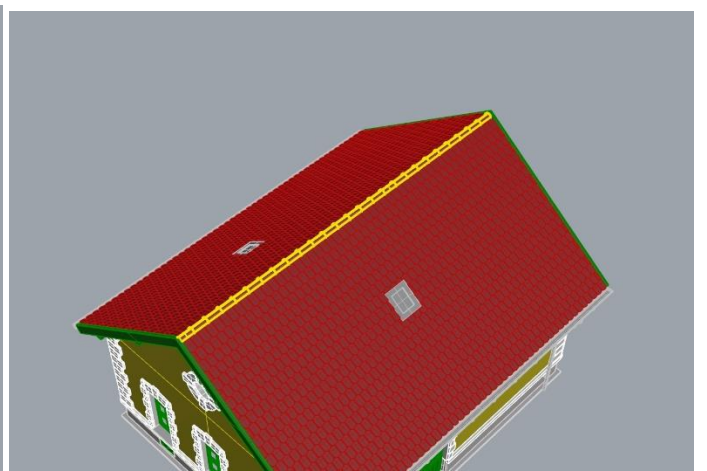
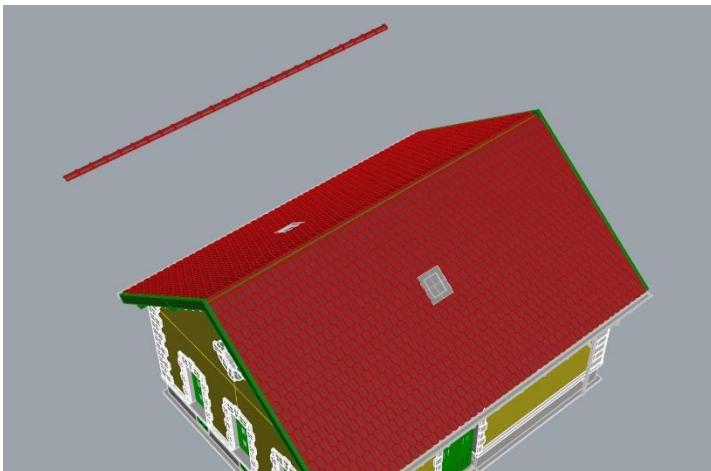
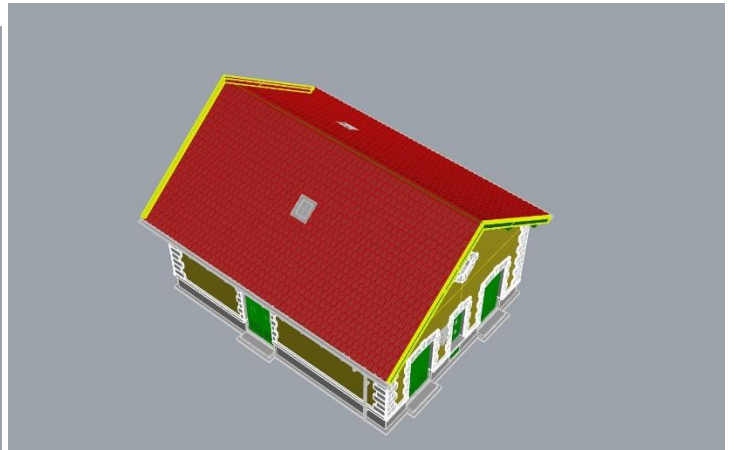
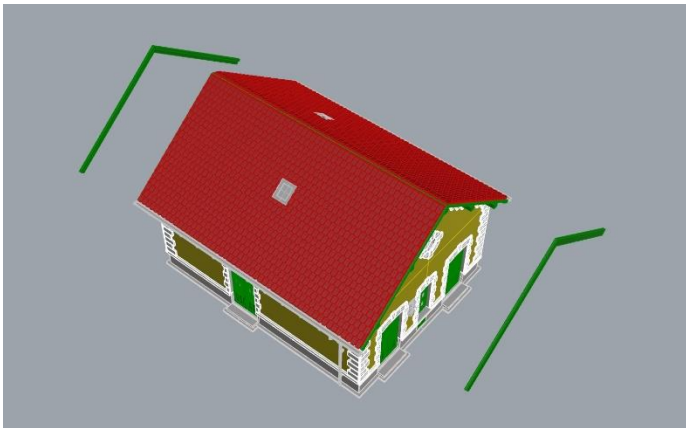
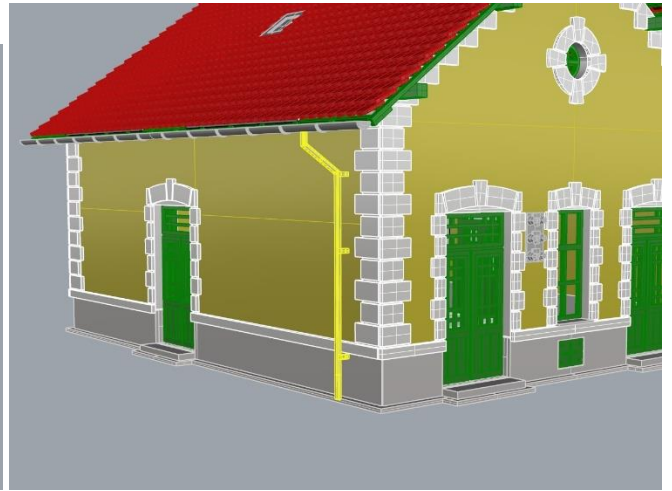


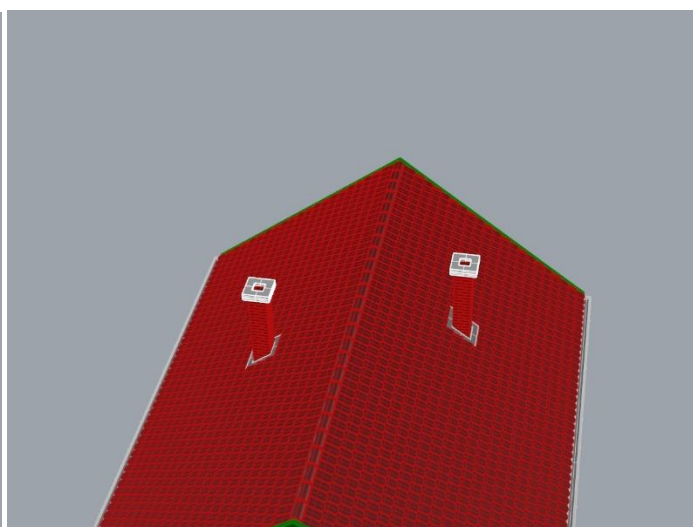
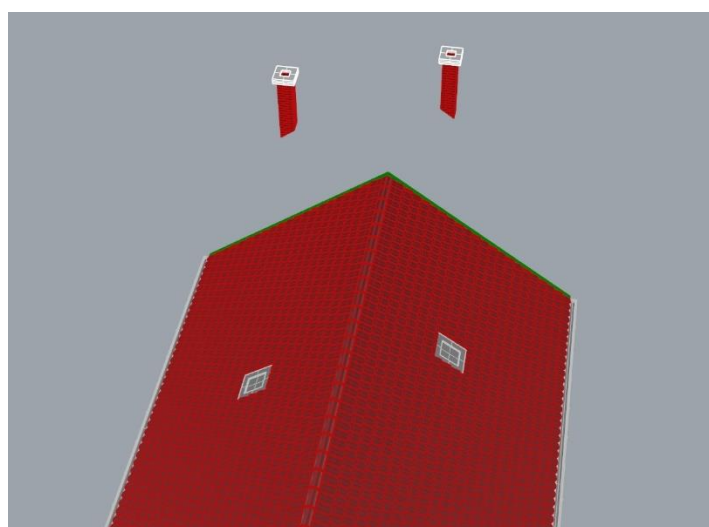
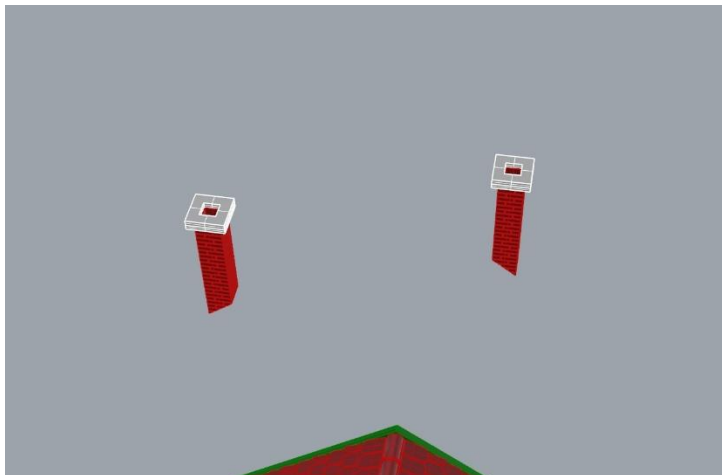
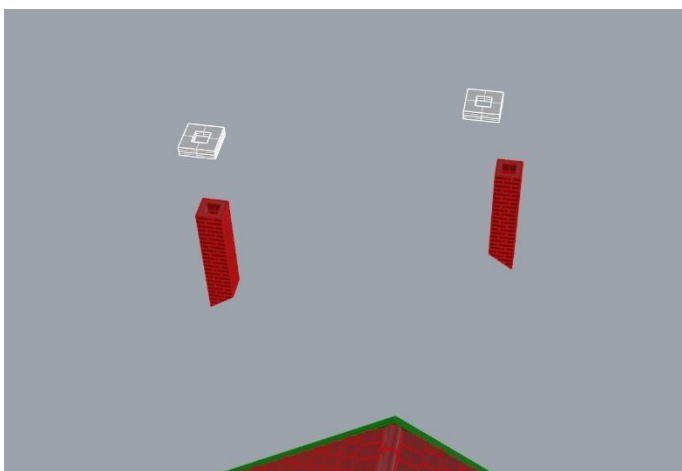
Minden tetőrész legalsó lécére kell tenni 1-1 távtartót. Ezek után elkezdhetjük felragasztgatni a cserépsorokat. Figyeljünk a cserépsorok sormintájára. A legelső sorba teli cserepes cserépsor kerüljön, rá vágott sor és így tovább. Legfelülre mindkét oldalra olyan cserépsor kerül, melynek a teteje le van csapva. Ez a kúpcserép jobb illeszkedésében segít. Ügyeljünk rá, hogy az előbb említett cserépsorok kerüljenek a legelső sorba!











Készen is vagyunk.

