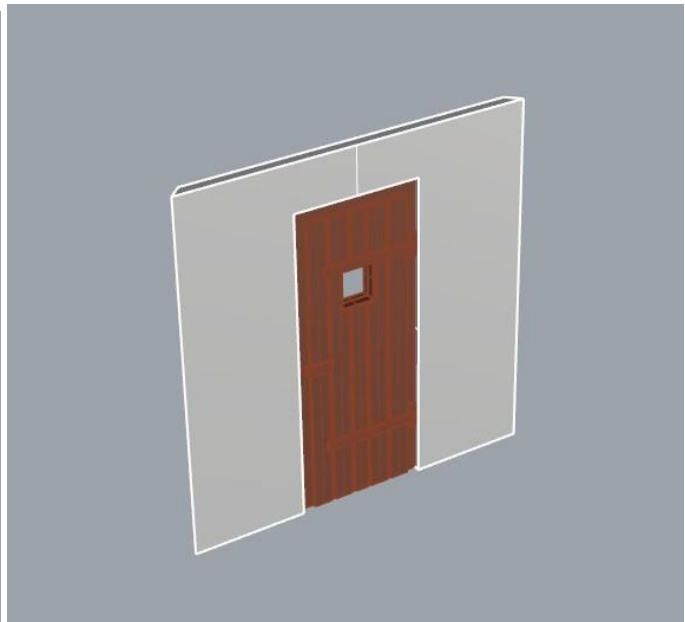
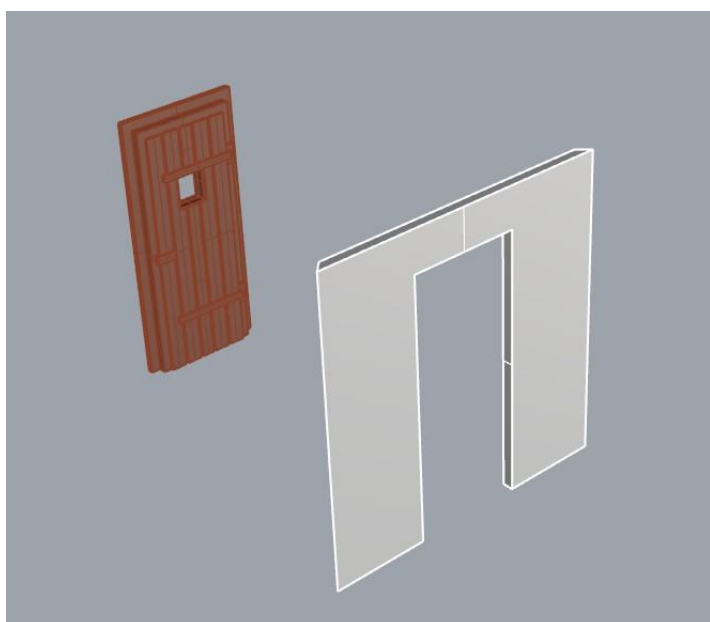
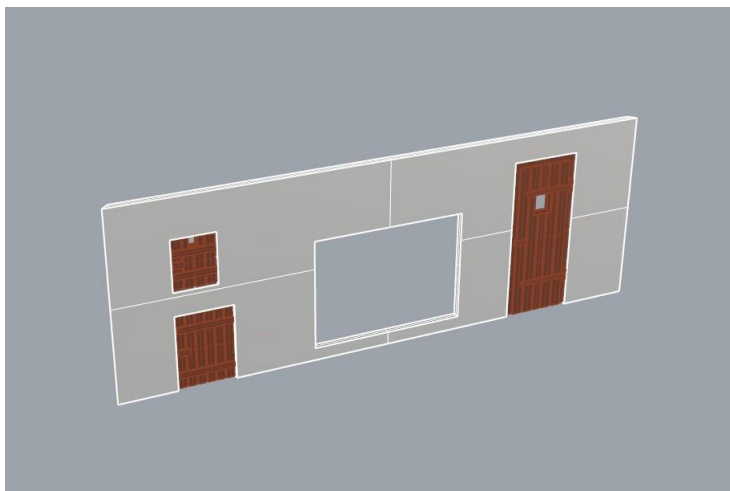
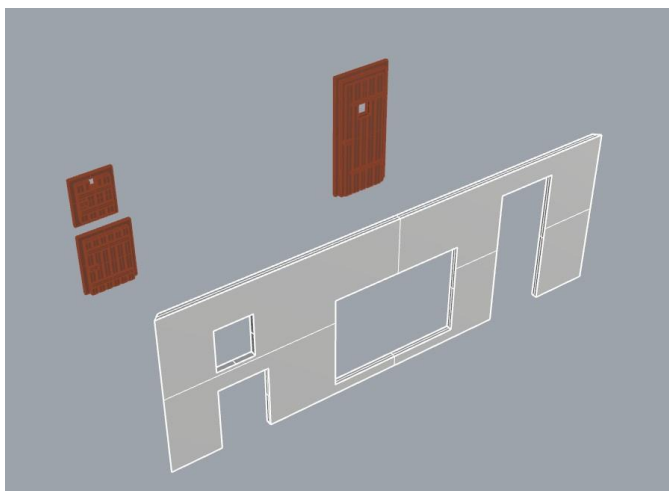
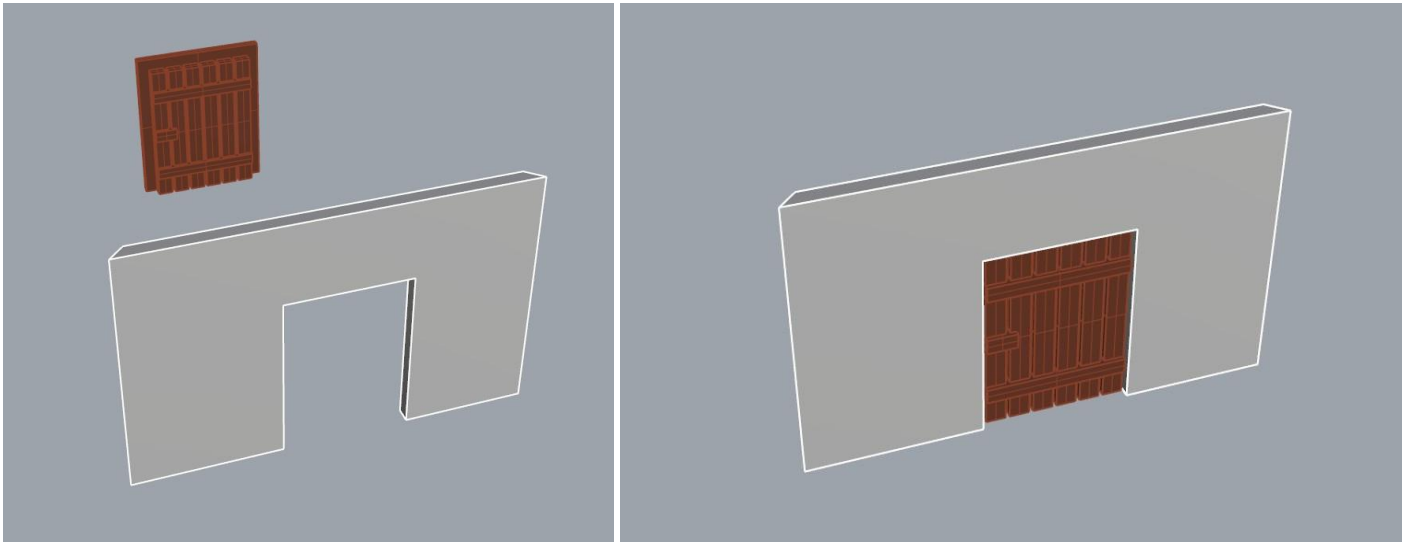


## VAMITTOOLS Ól – 405-ös típus

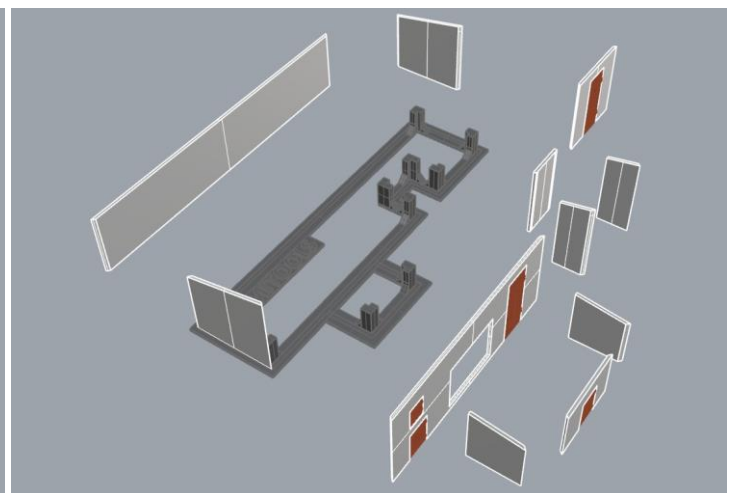
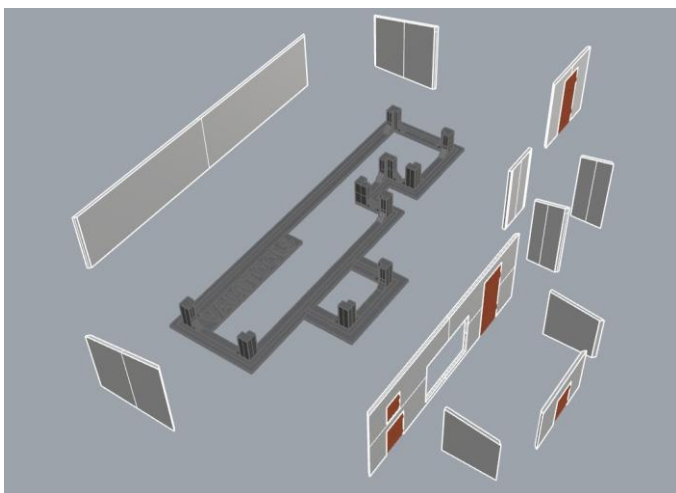
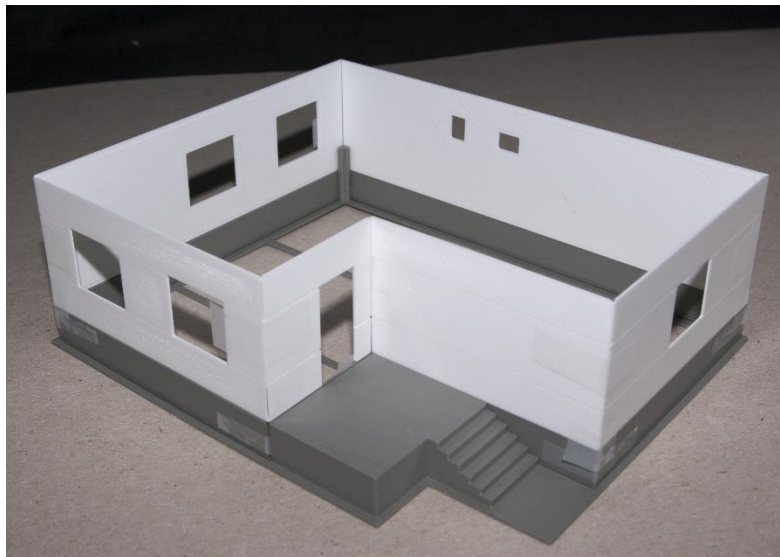


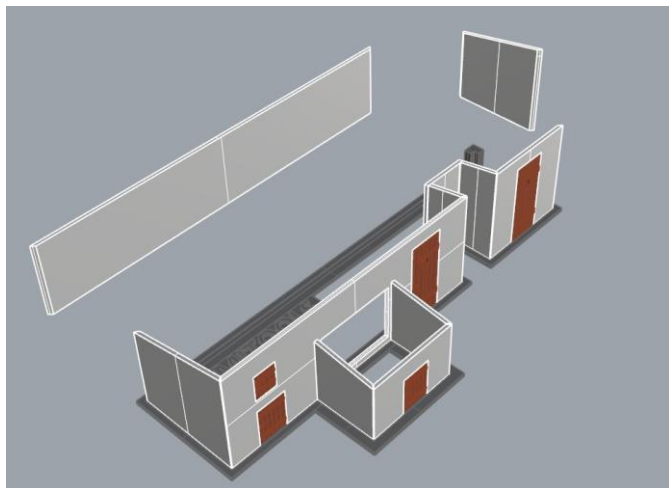
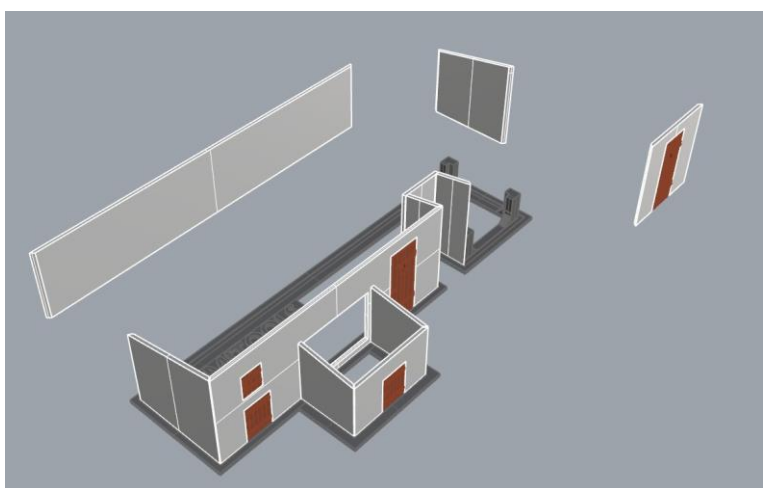
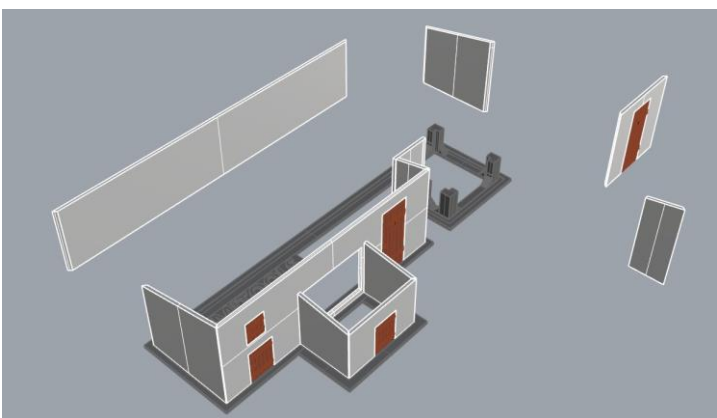
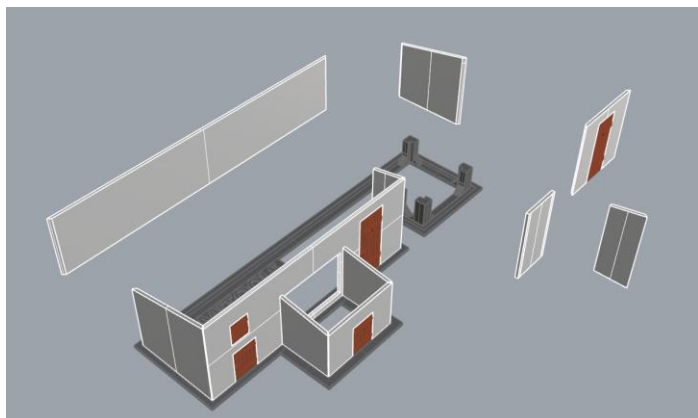
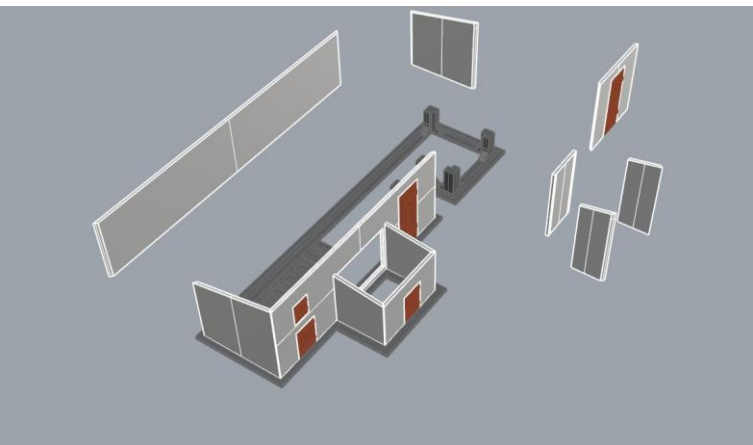
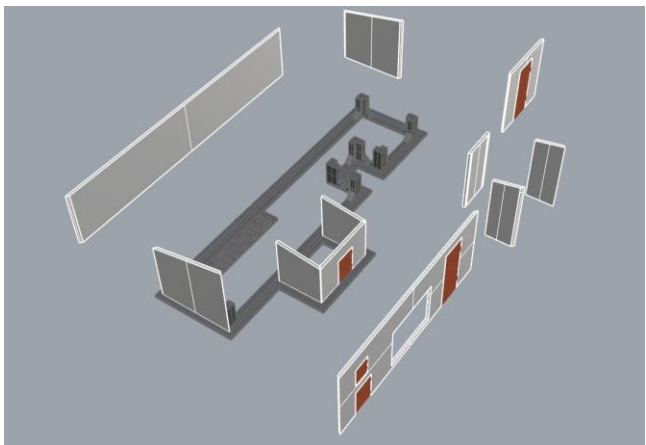
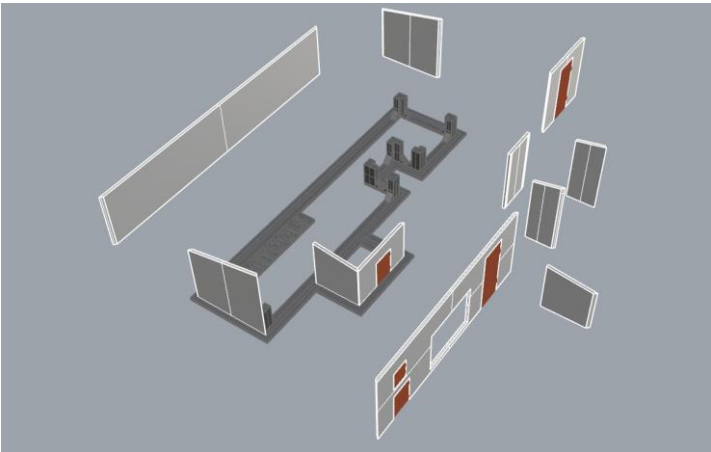
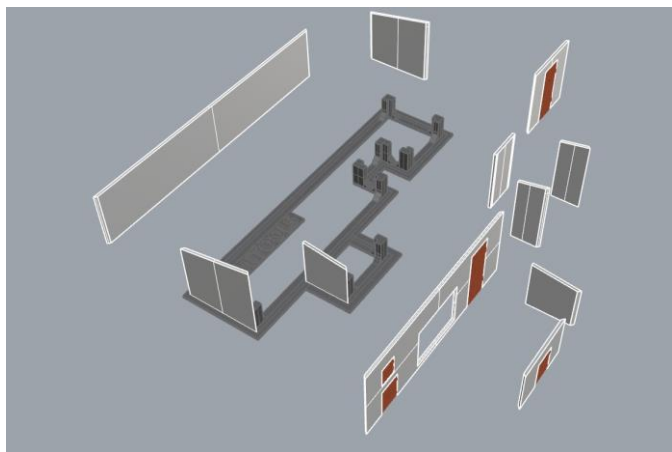
Az összerakást az oldalak külön-külön történő összerakásával kezdjük. Minden falrésznél a sima (vagy fényes) oldal néz kifelé! Kövessük a képeken látható lépéseket.

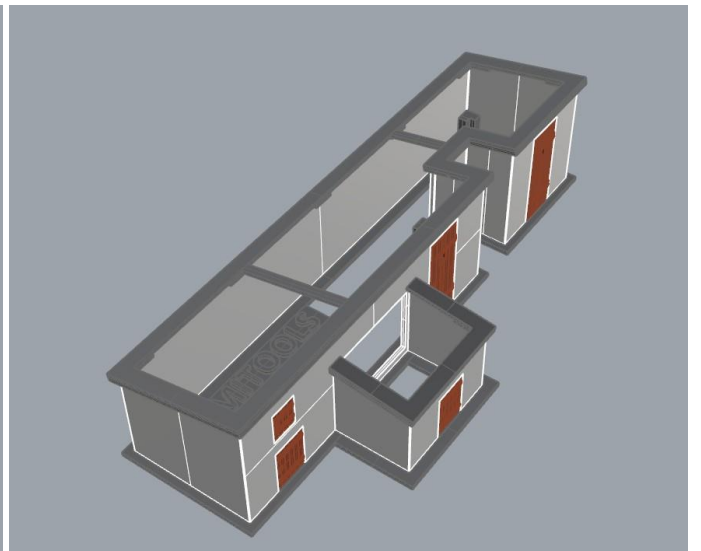
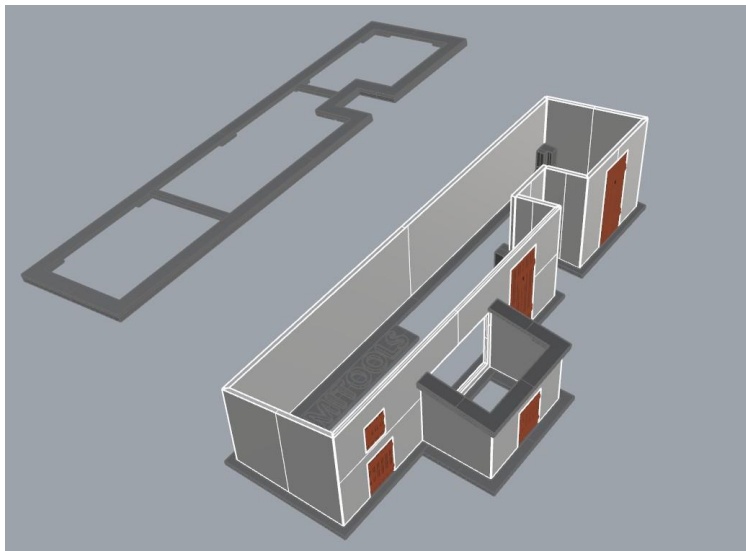
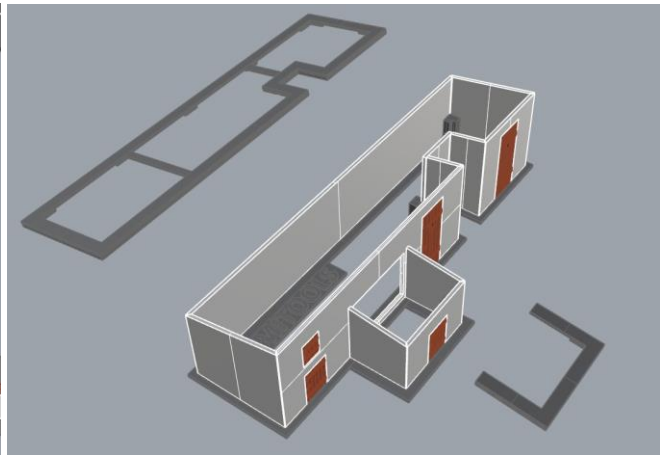
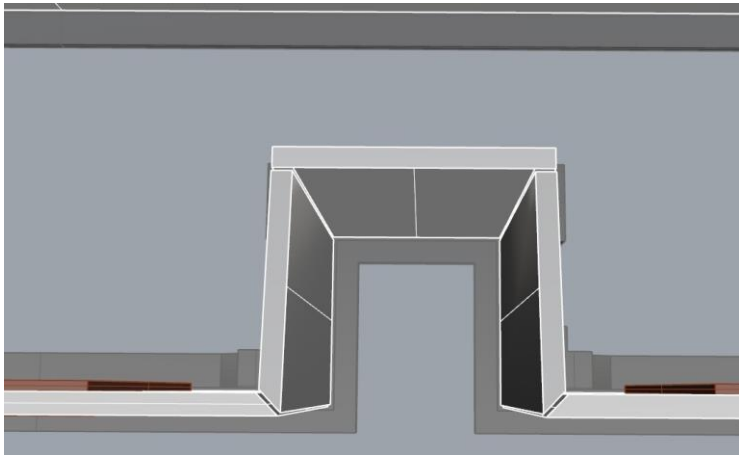
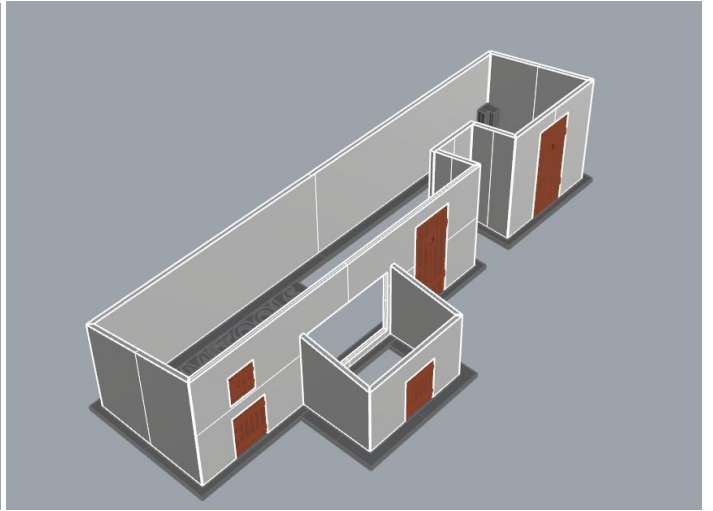
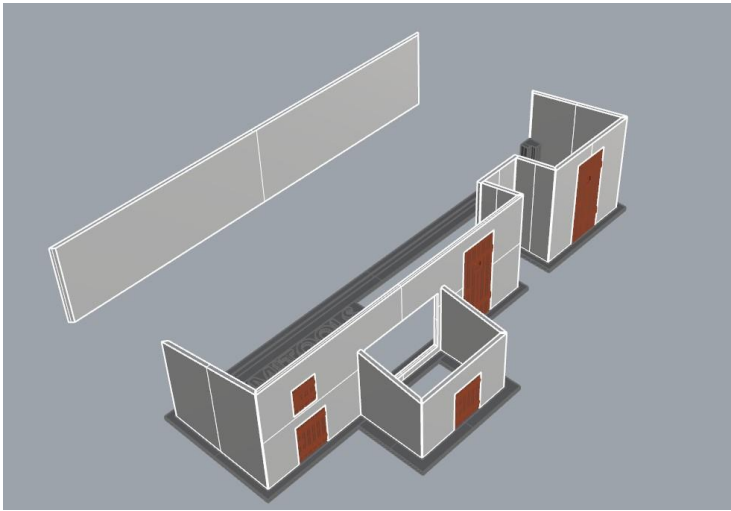


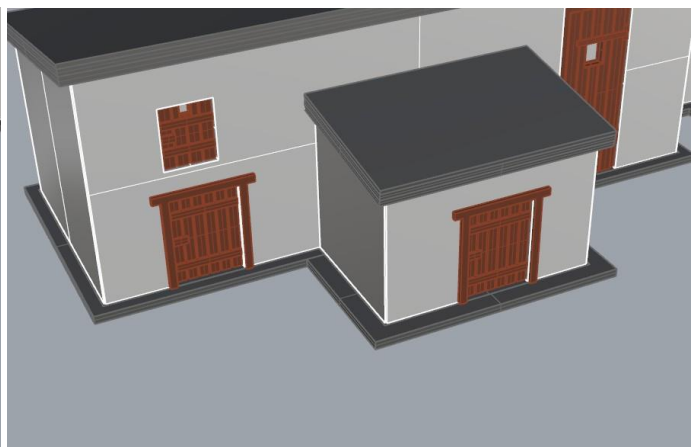
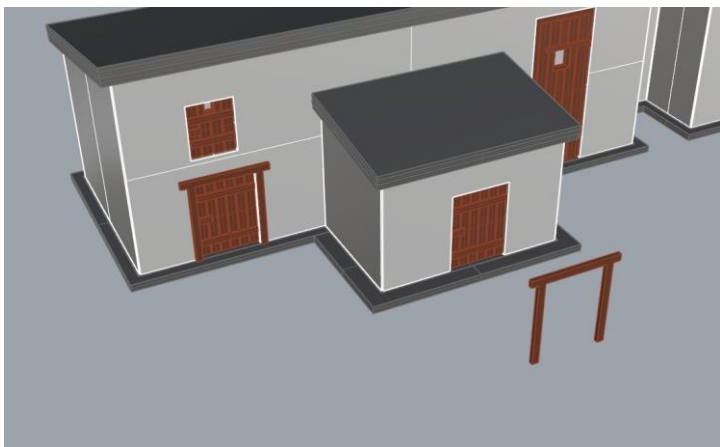
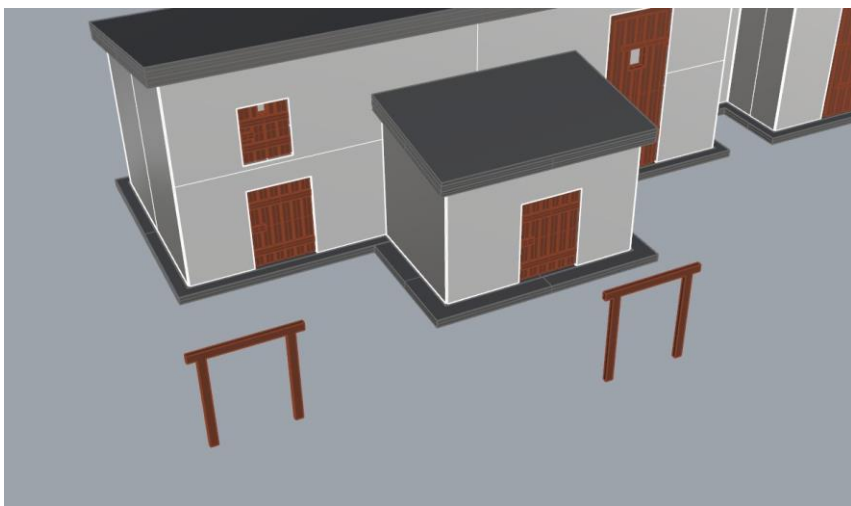
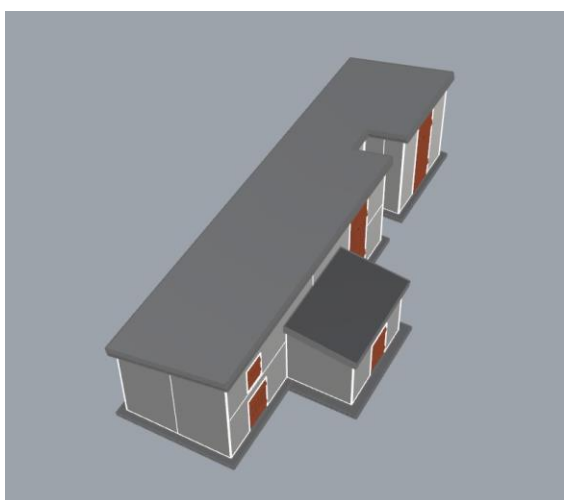
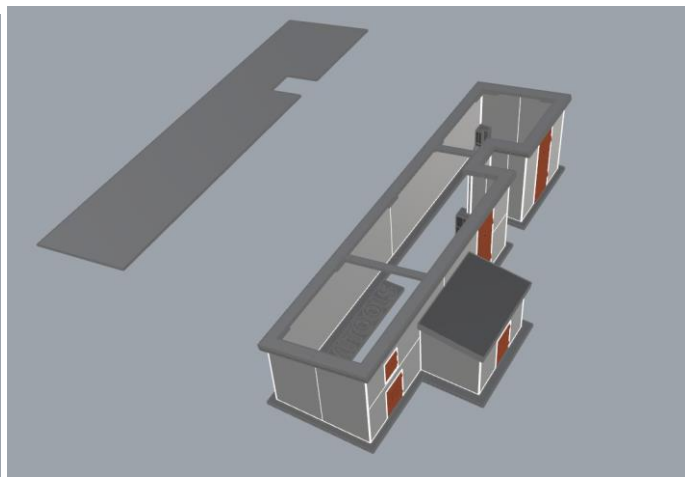
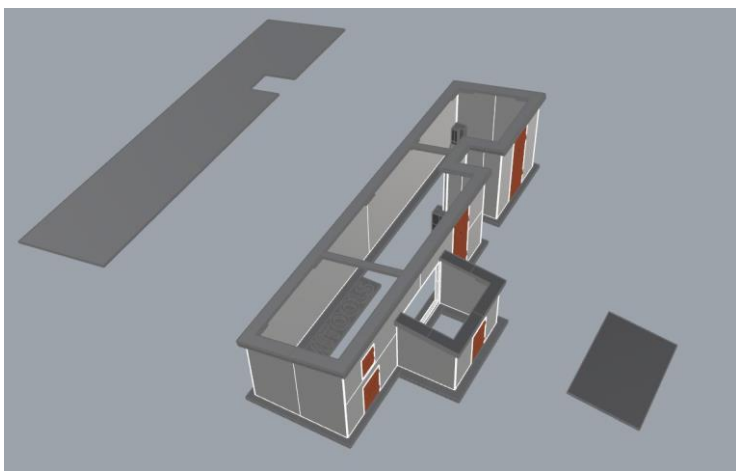


Ragasztási segédletként a falakat ragasszuk össze ideiglenesen az alábbi képen látható módon Scotch Magic- vagy Krepp takarószalaggal, így a falak a későbbi ragasztás során nem fognak elmozdulni. Egy-egy saroknál akár több helyen is megragaszthatjuk a ragasztószalaggal, így még biztosabb tartást kapunk. (a kép illusztráció)









Készen is vagyunk.

