

VAMITTOOLS Vasúti raktárépület – 508-as típus

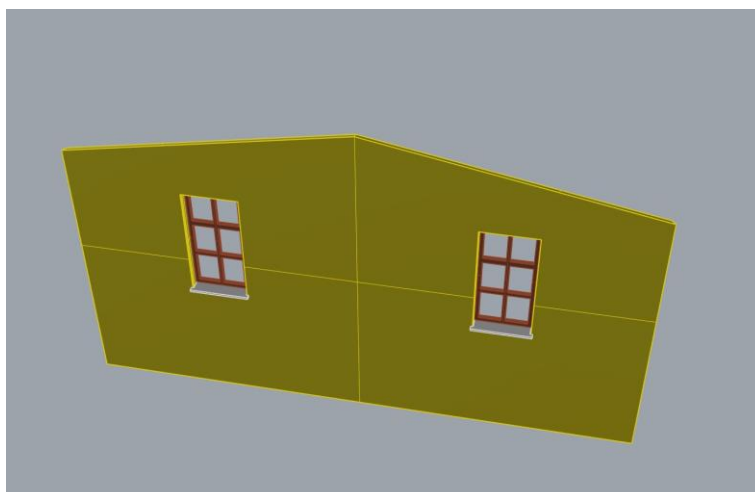
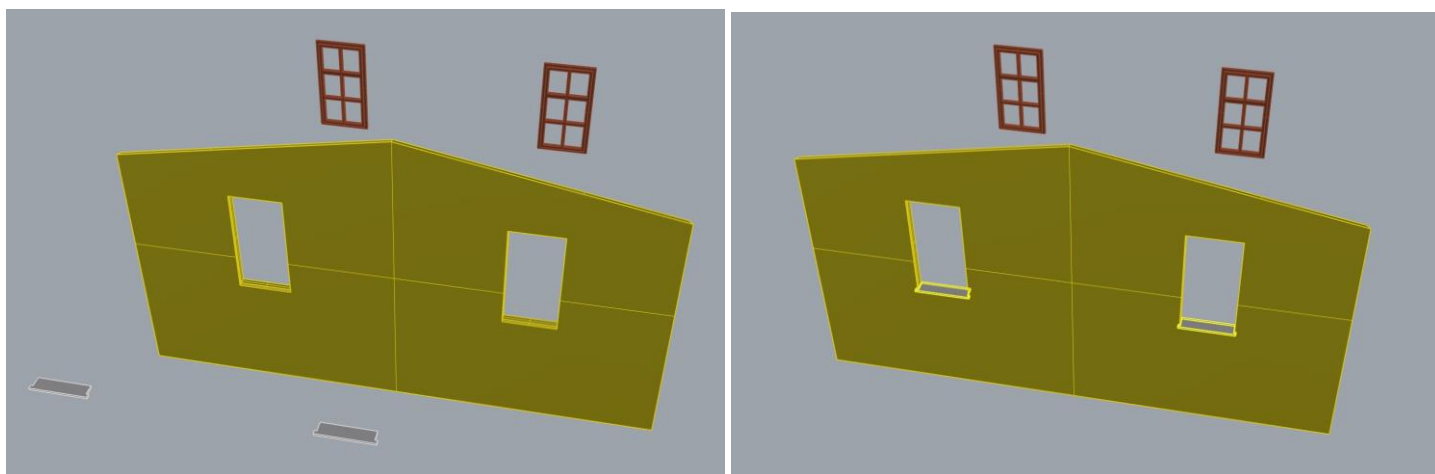
2023.04.22. után vásárolt termék



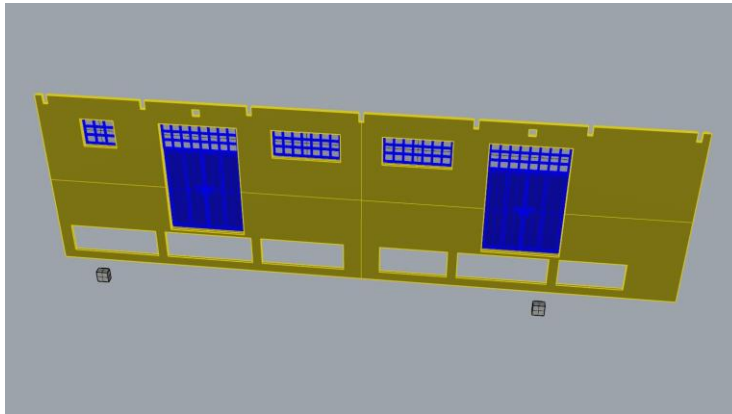
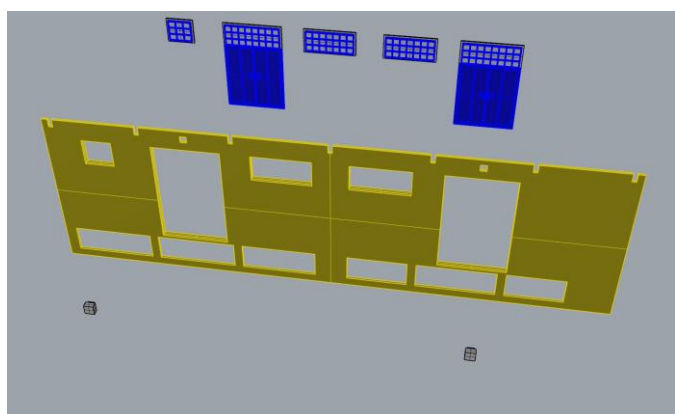
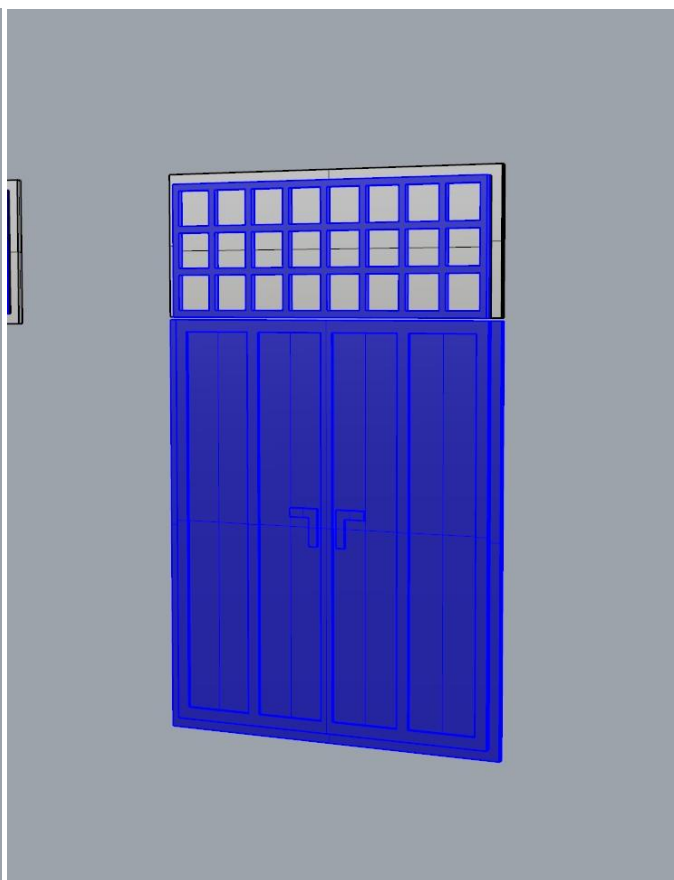
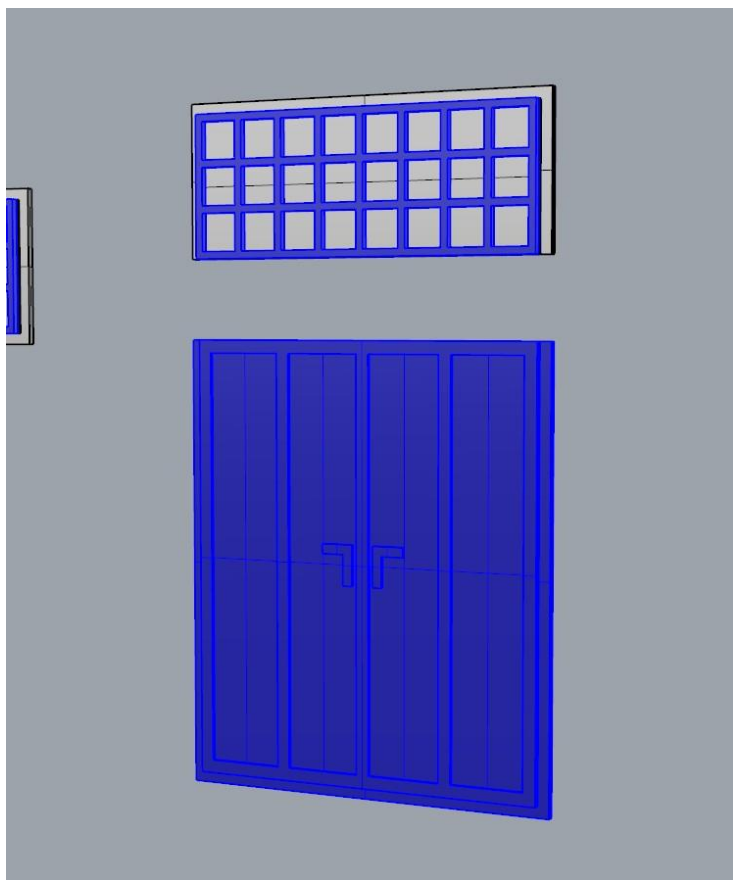
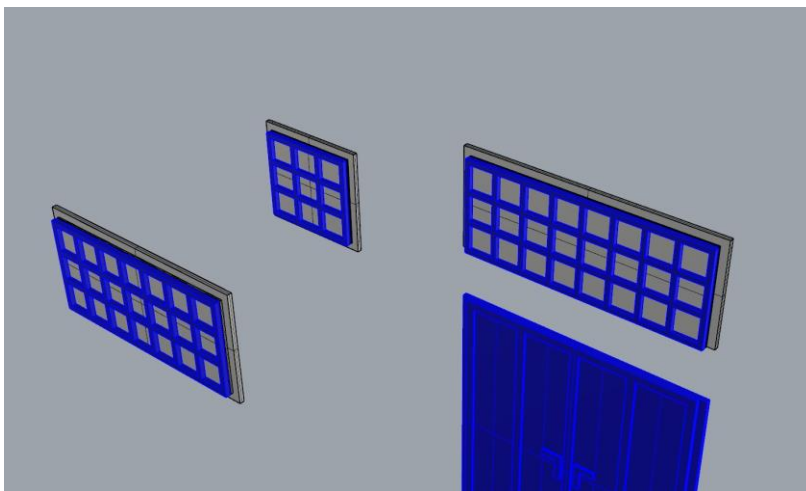
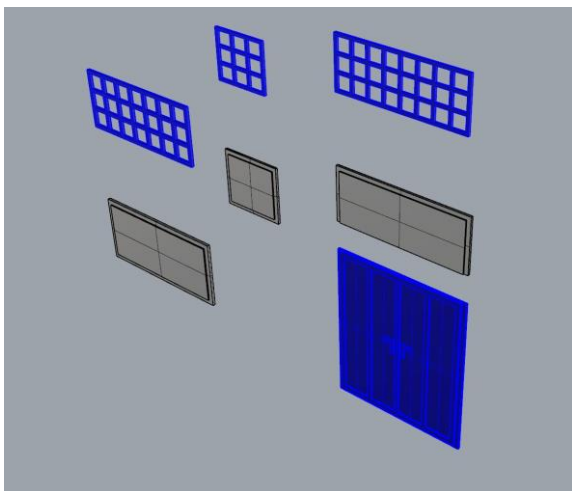
Maketragasztót (Rewell stb.) NE használjanak termékeinkhez, mert az oldószere kárt tehet az egyes alkotóelemekben (főleg a vékonyakban)! A következő ragasztókat ajánljuk: kék tubusos Technokol Rapid (acetonmentes), kétkomponenses ragasztó (Epoxy Rapid, Araldite stb.). Bővebb információ a ragasztással, festéssel stb.-vel kapcsolatban a minden termék oldalán elérhető általános tájékoztatóban van!

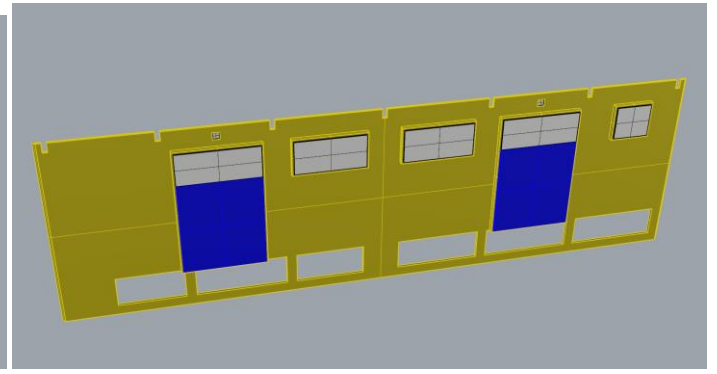
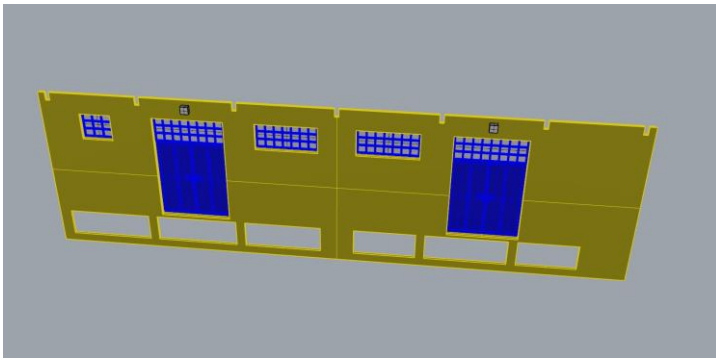
Az összerakást az oldalak külön-külön történő összerakásával kezdjük. Minden falrésznél a sima (fényes) oldal néz kifelé! Kövessük a képeken látható lépéseket. Célszerű az épület belső oldalára karton maszkolókat tenni, hogy a fény ne világítsa át az épület falait. A karton maszkolókat az útmutató külön nem jelzi!

1. oldal:

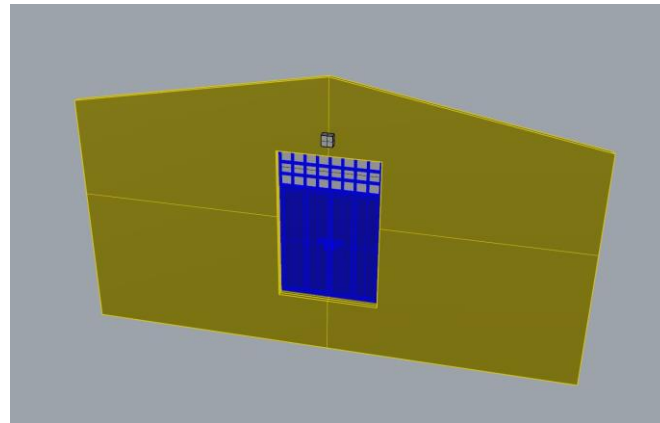
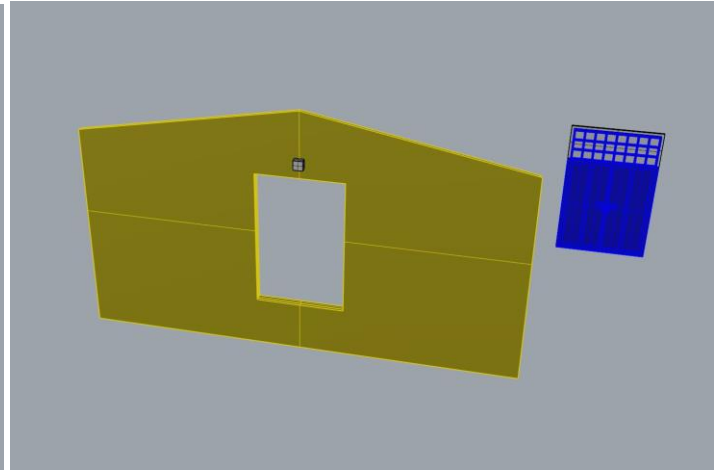
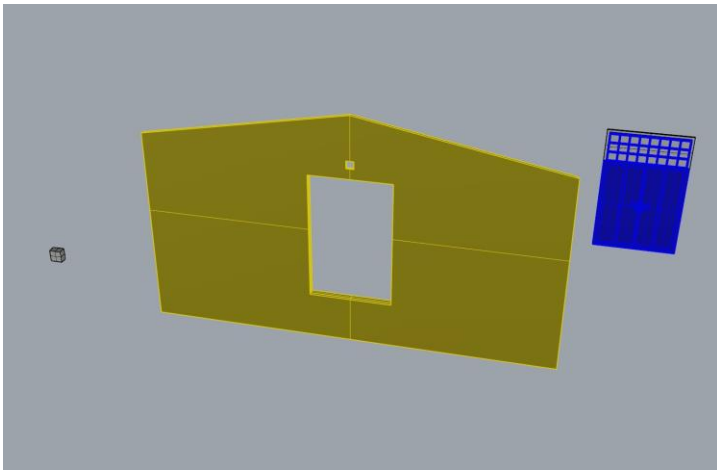


2. oldal:

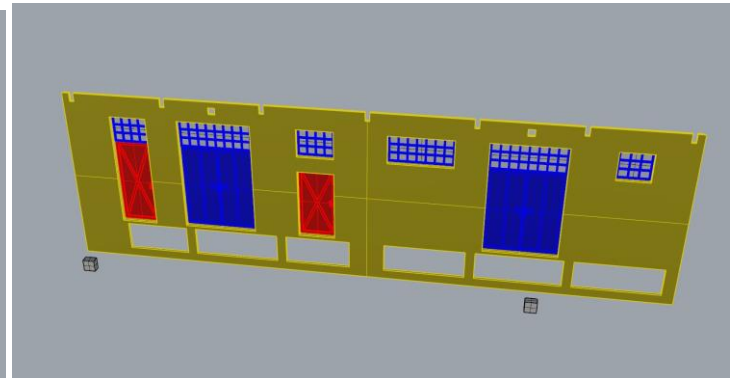
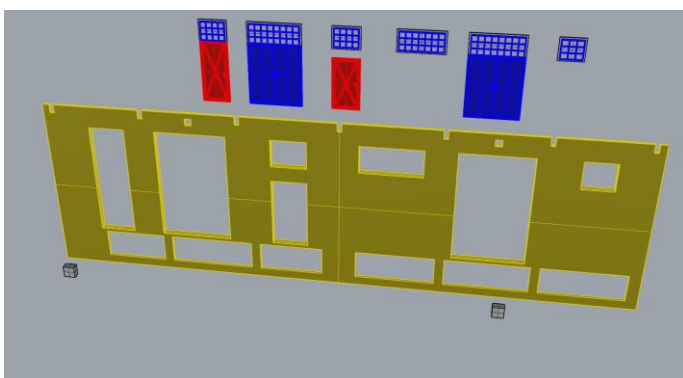


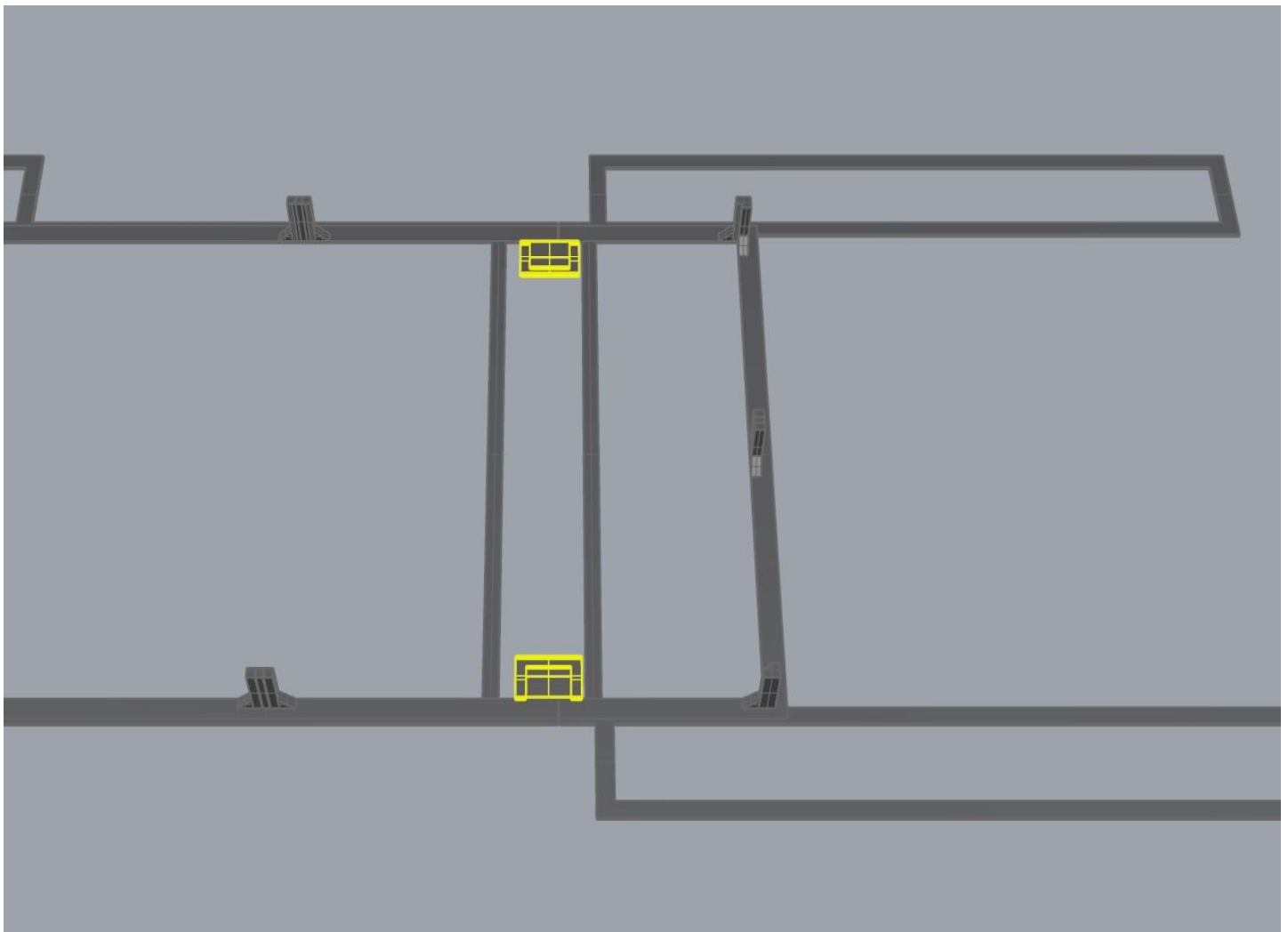
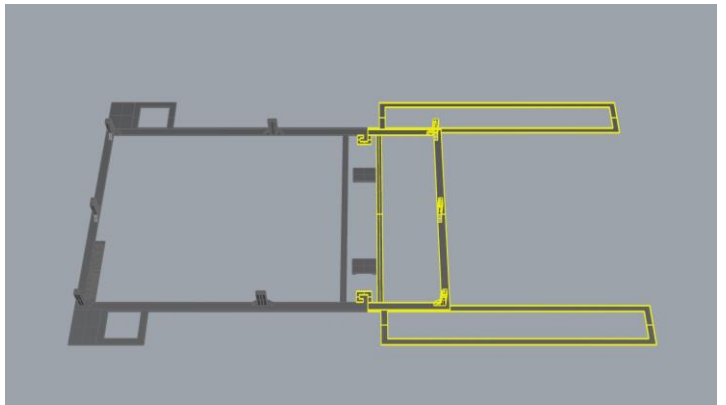
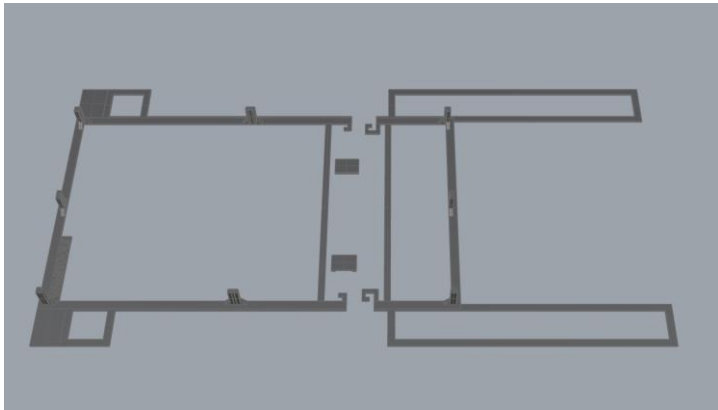
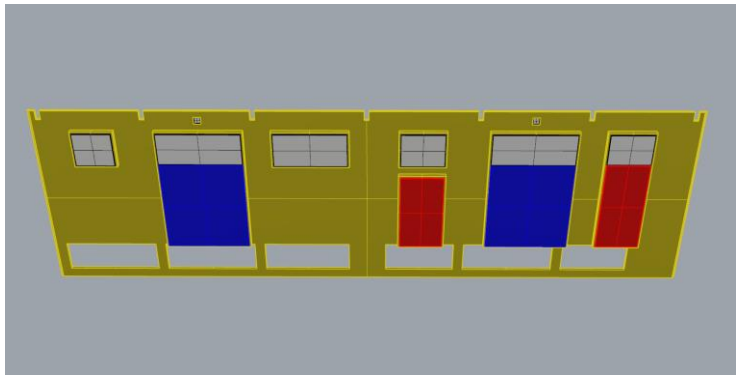
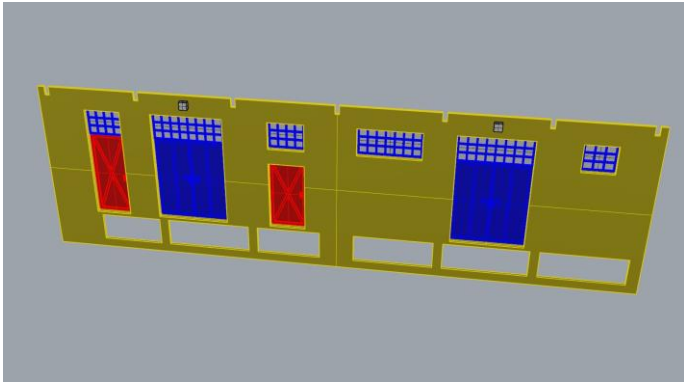


3. oldal:

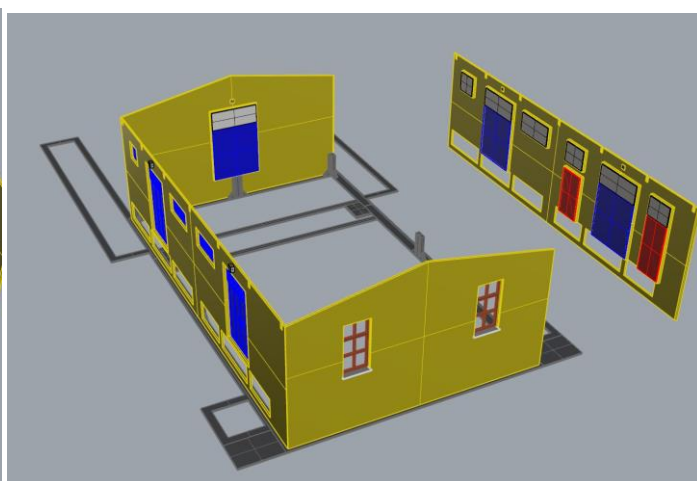
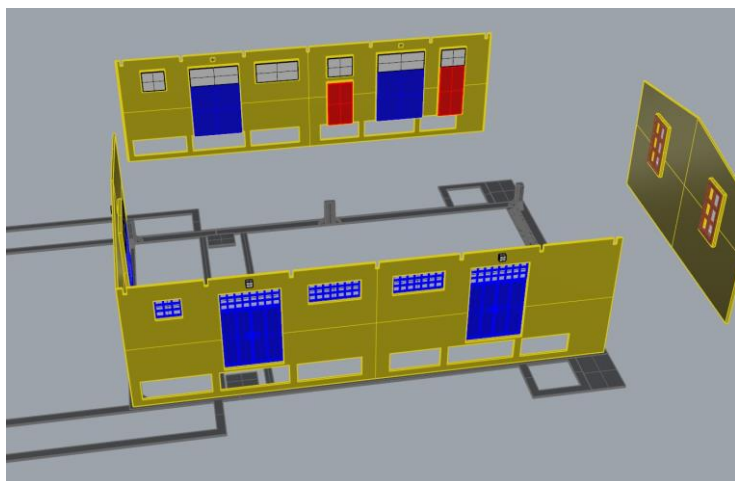
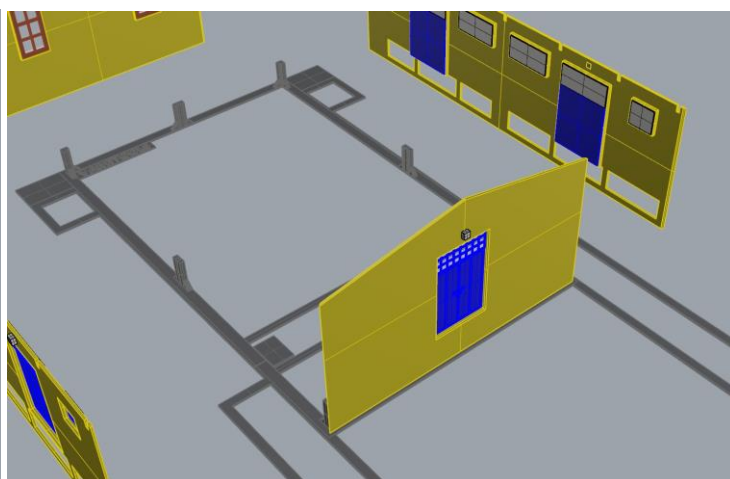
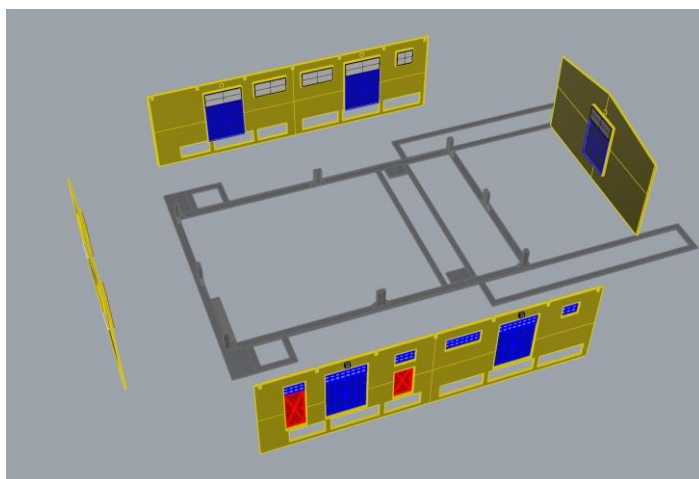
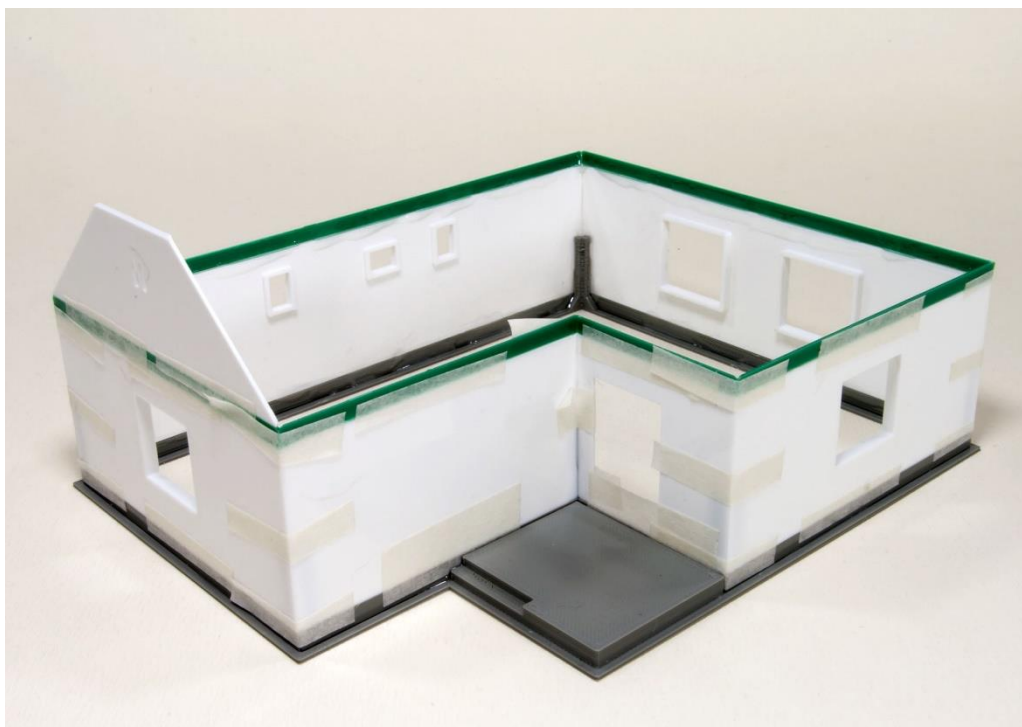


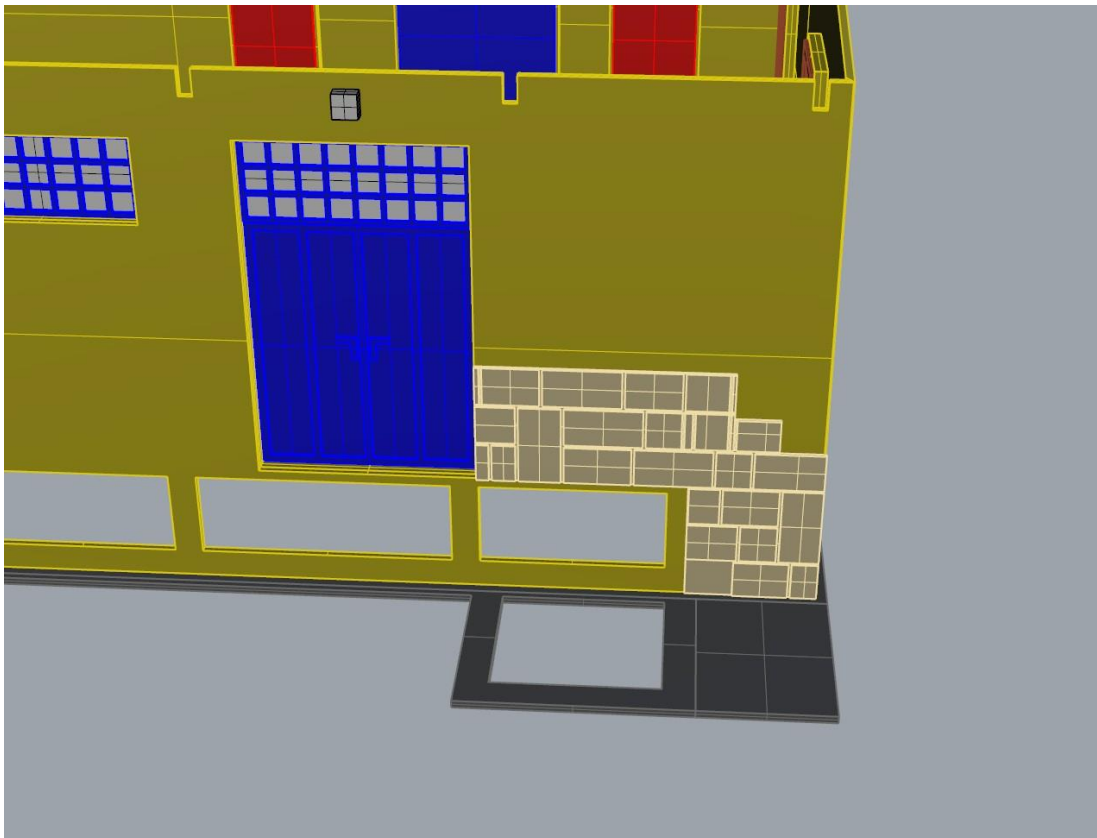
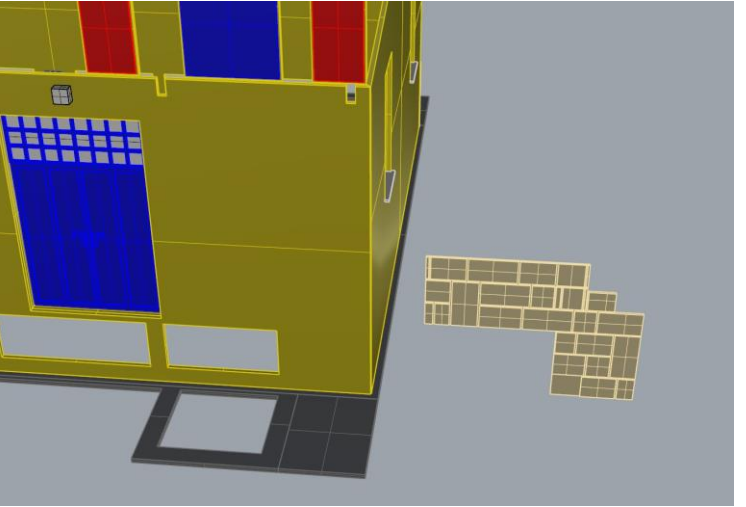
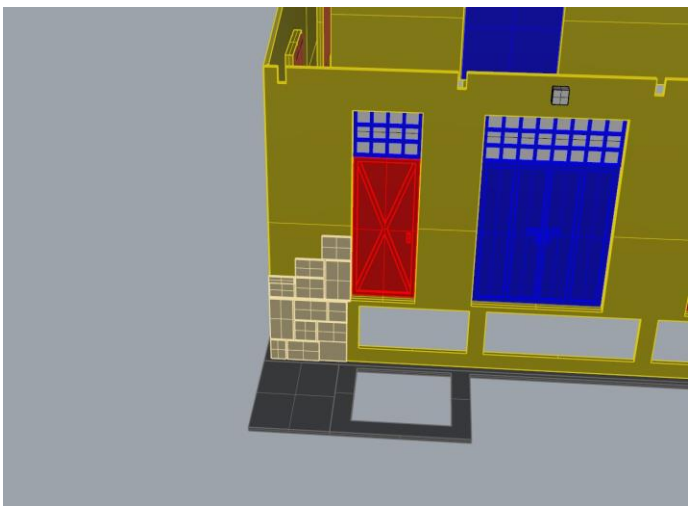
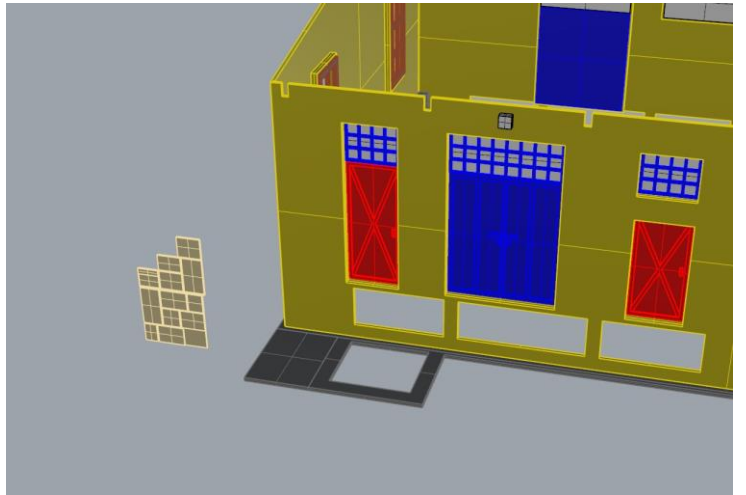
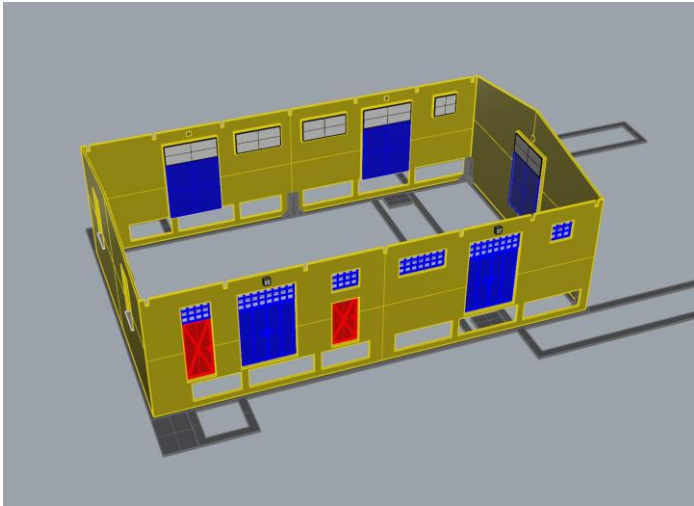
4. oldal:

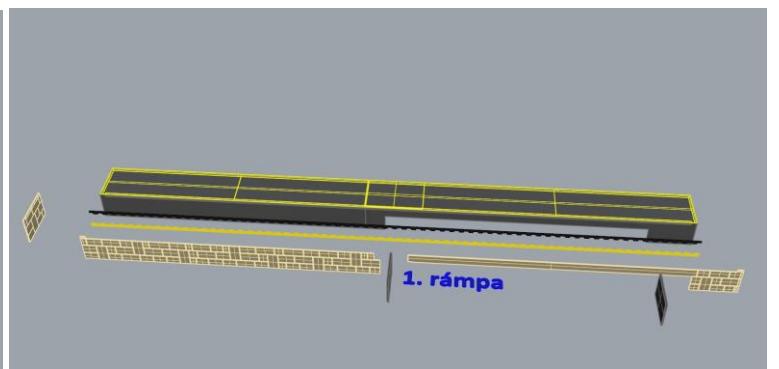
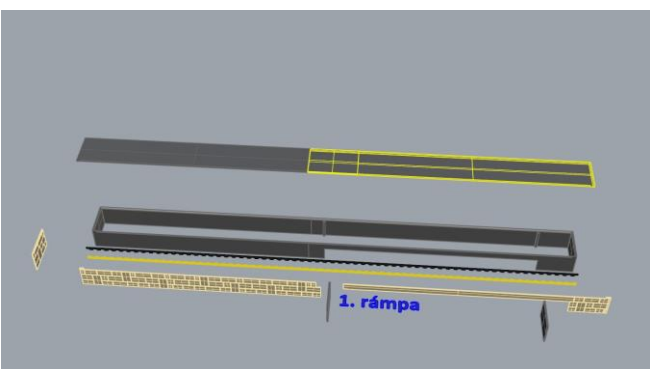
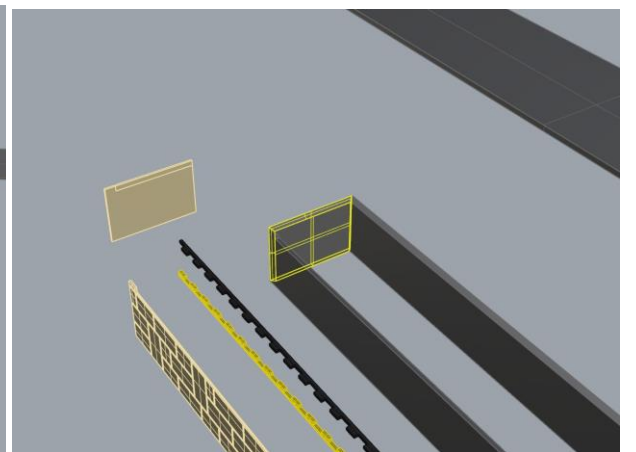
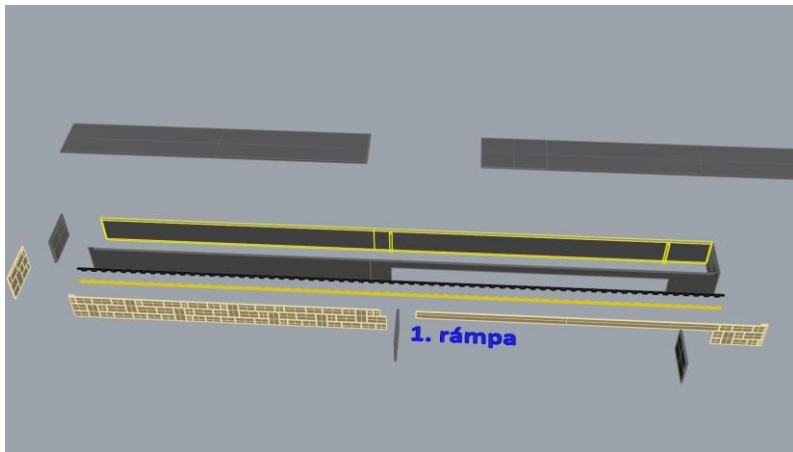
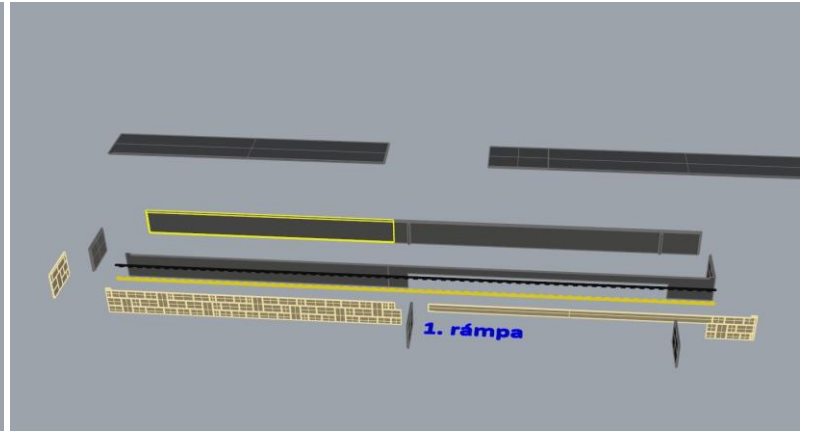
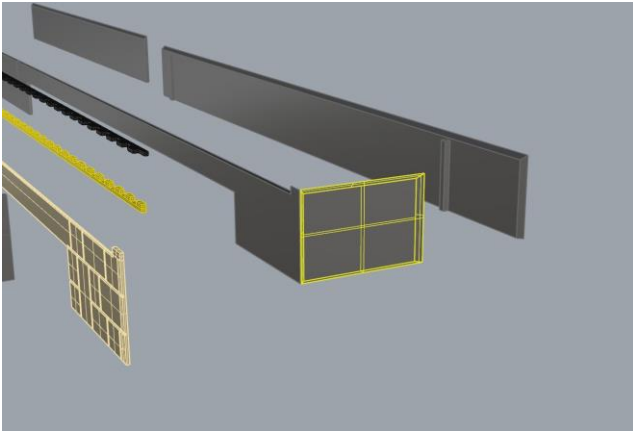
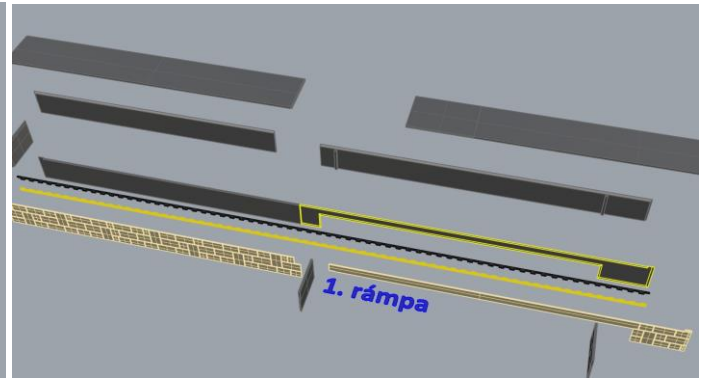
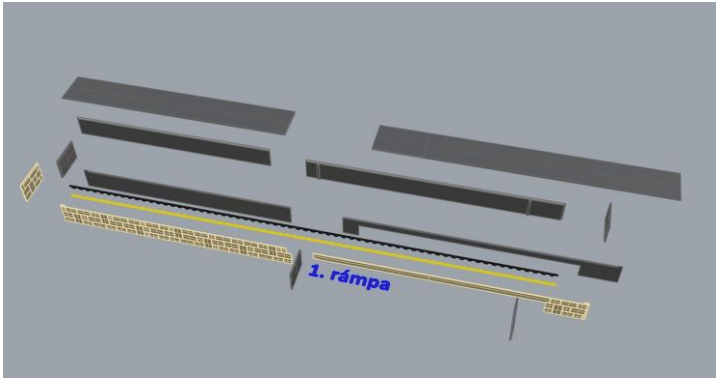


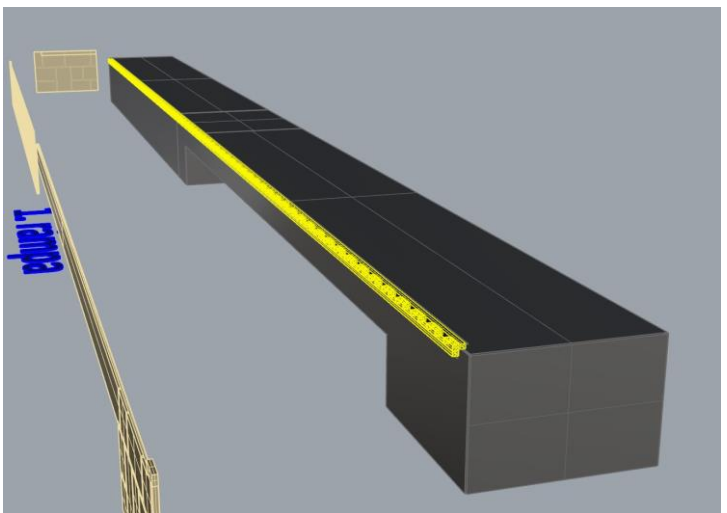
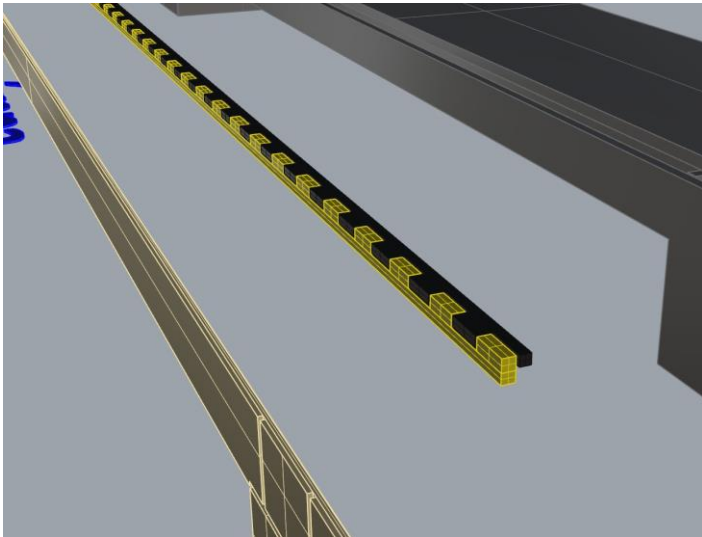
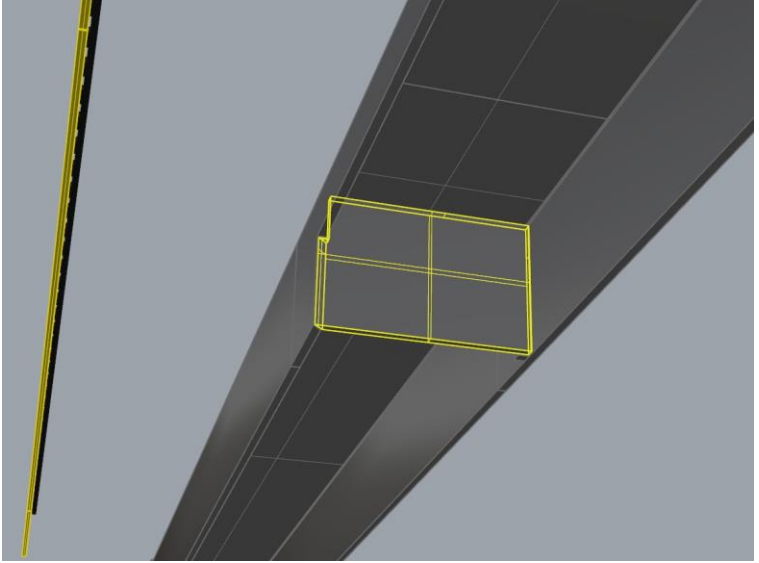
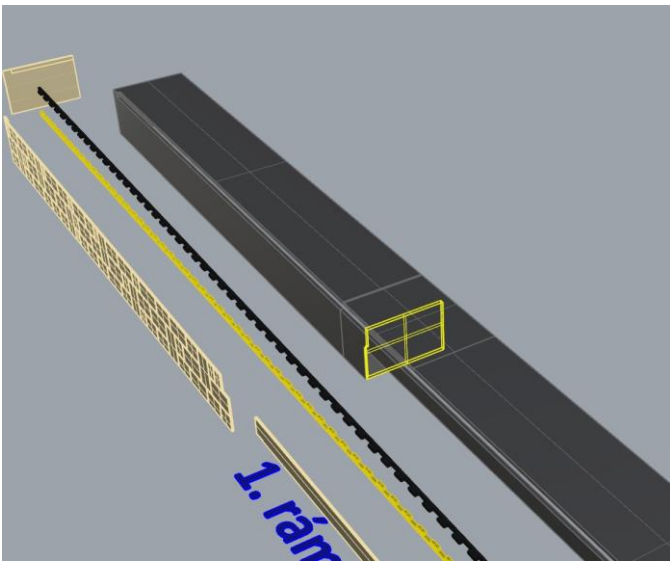
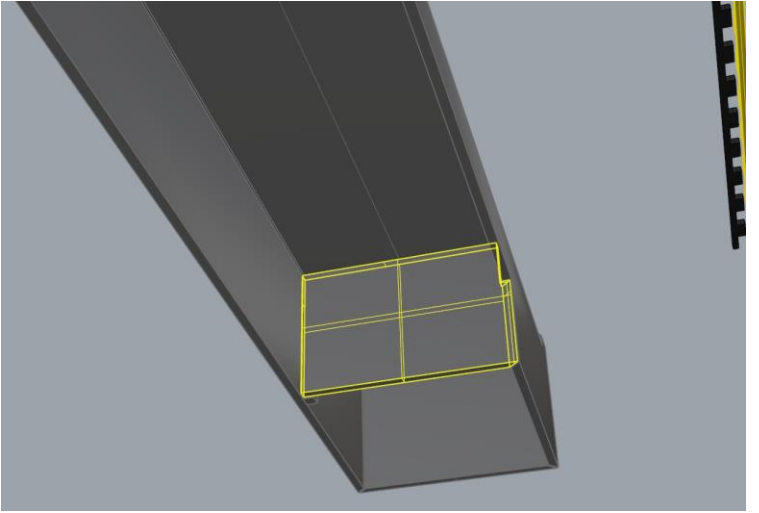
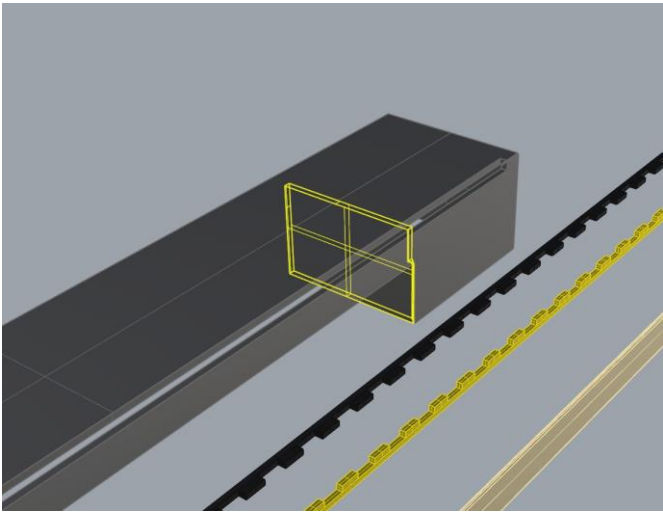


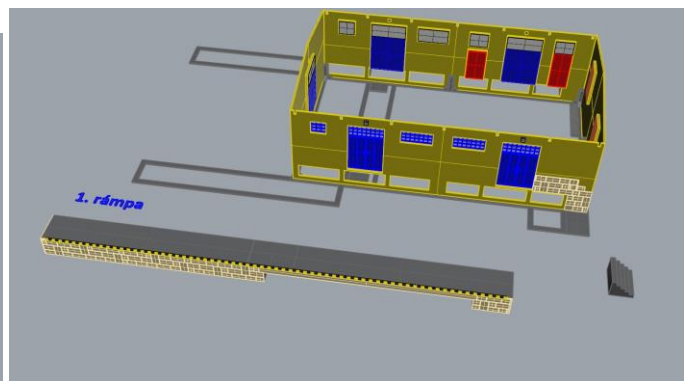
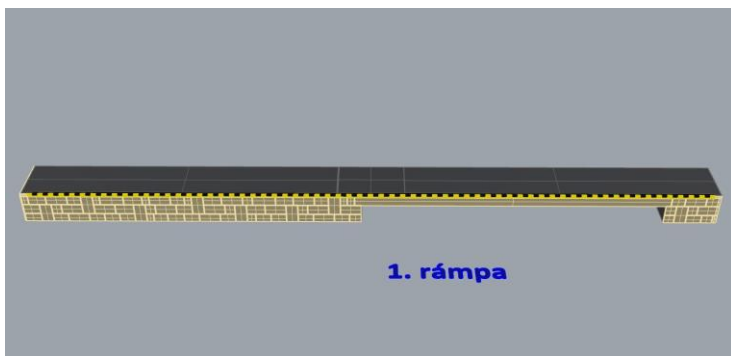
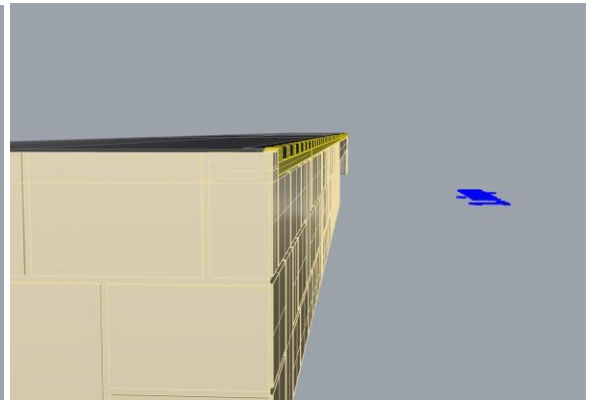
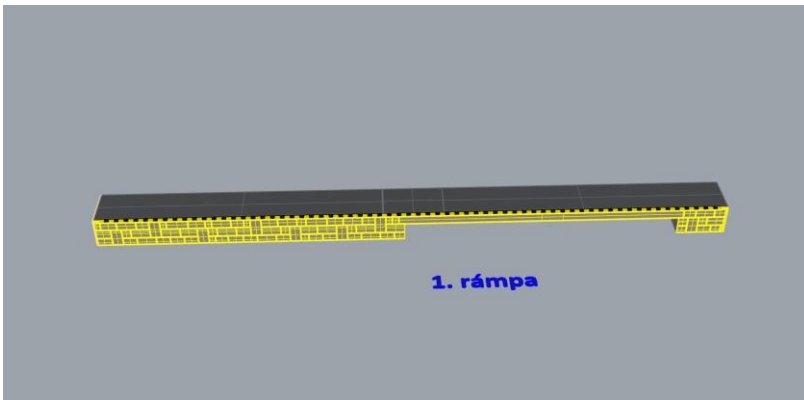
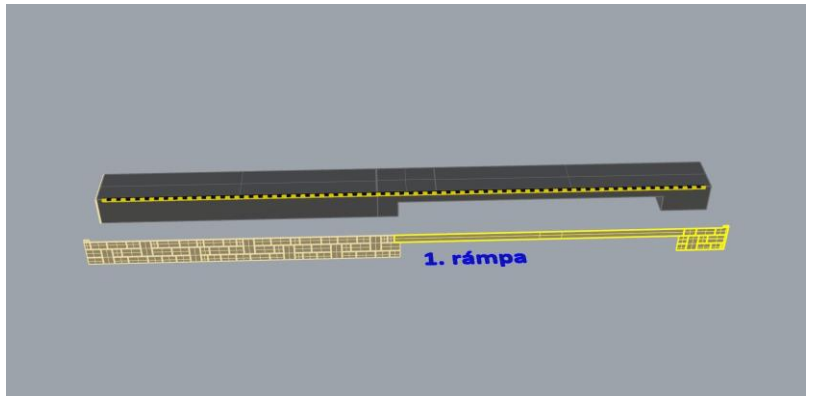
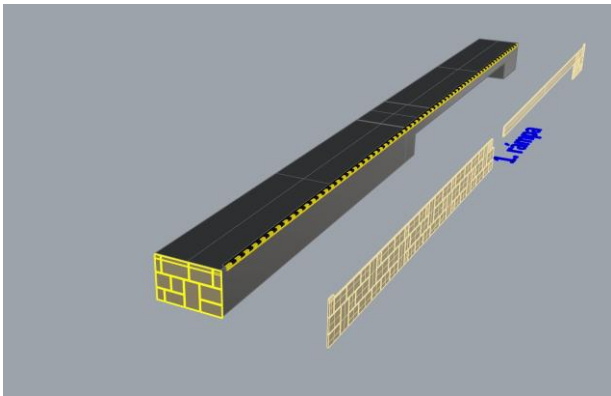
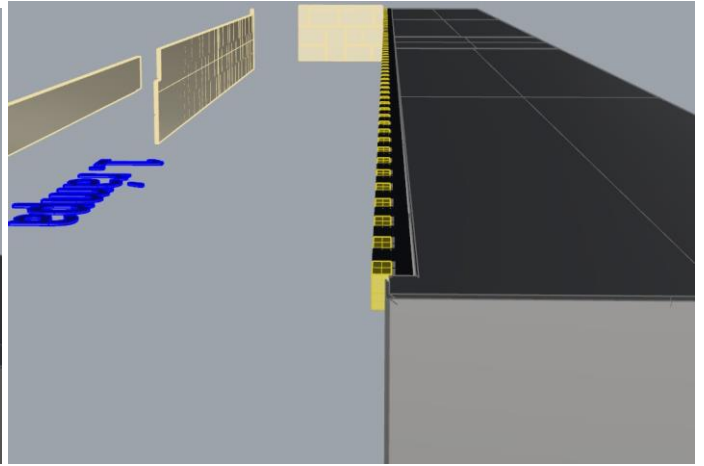
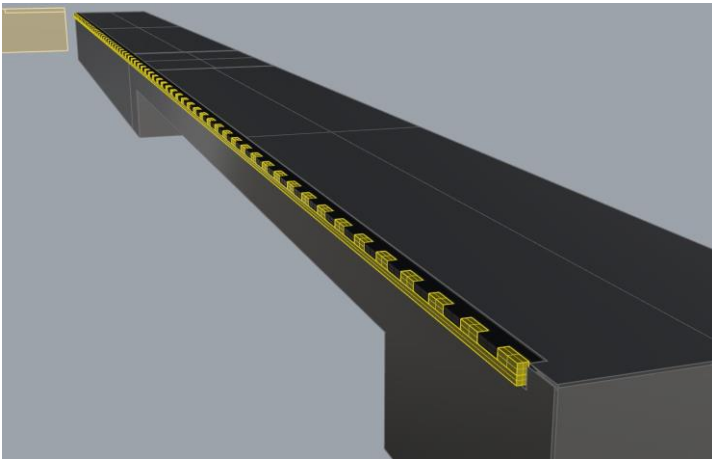
Ragasztási segédletként a falakat ragasszuk össze ideiglenesen az alábbi képen látható módon Scotch Magic vagy Krepp takarószalaggal, így a falak a későbbi ragasztás során nem fognak elmozdulni. Egy-egy saroknál akár több helyen is megragaszthatjuk a ragasztószalaggal, így még biztosabb tartást kapunk.

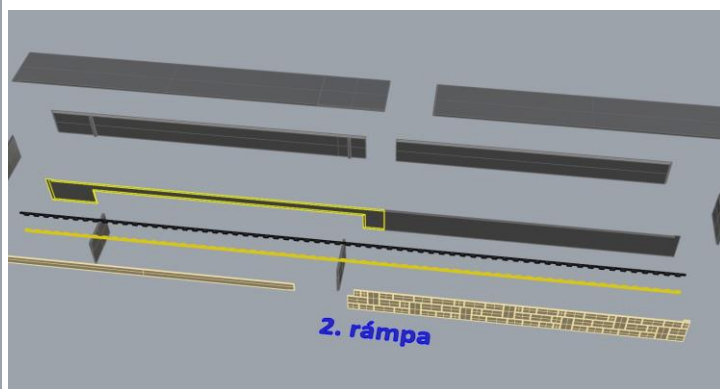
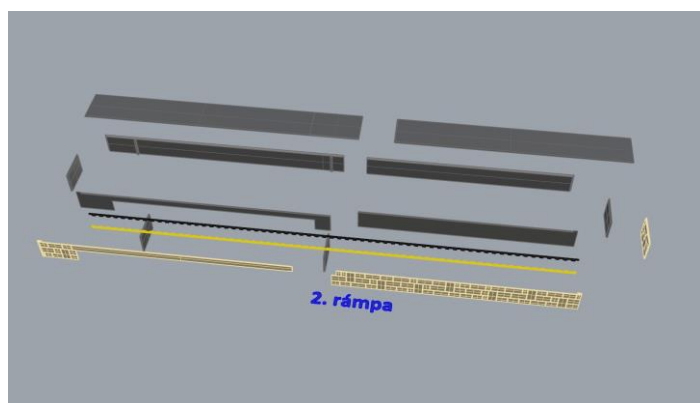
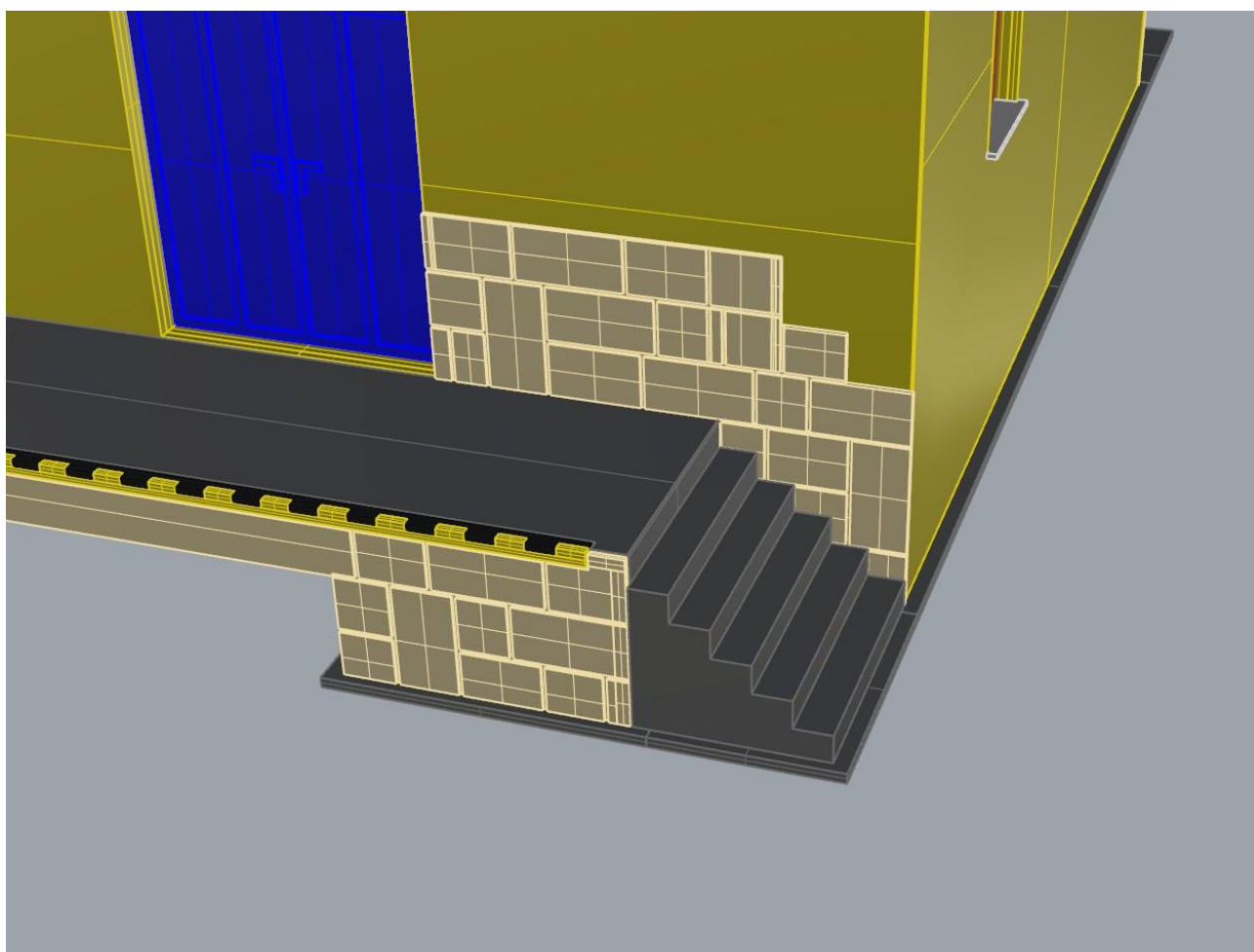
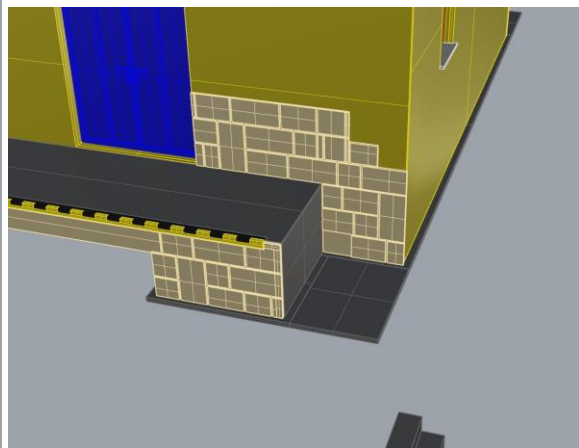
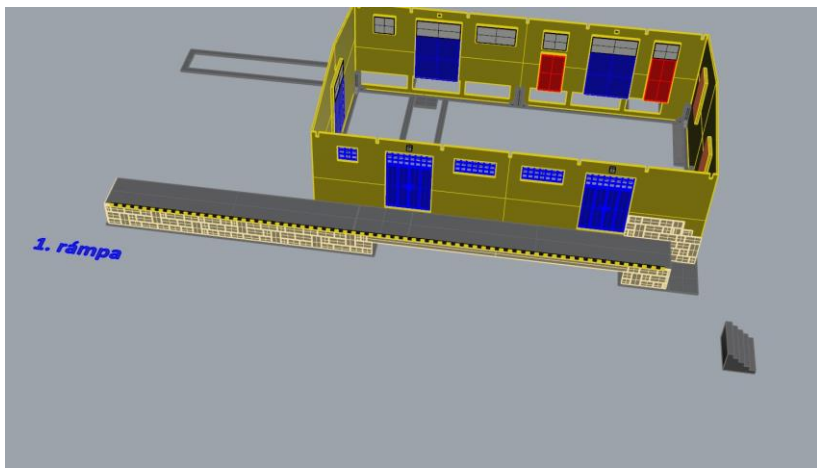


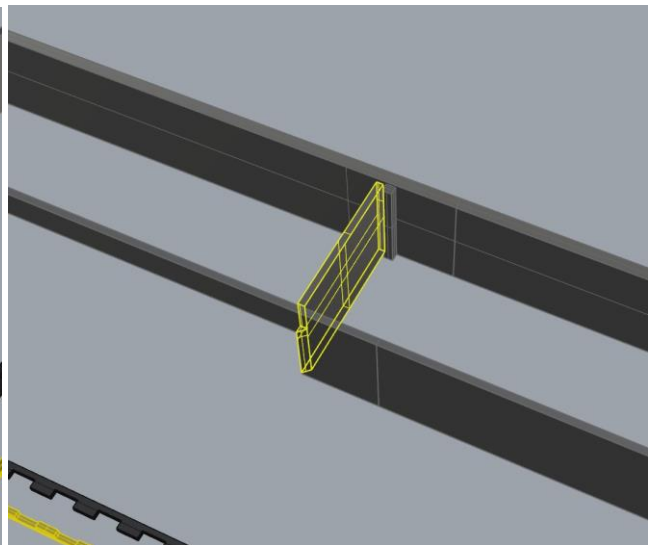
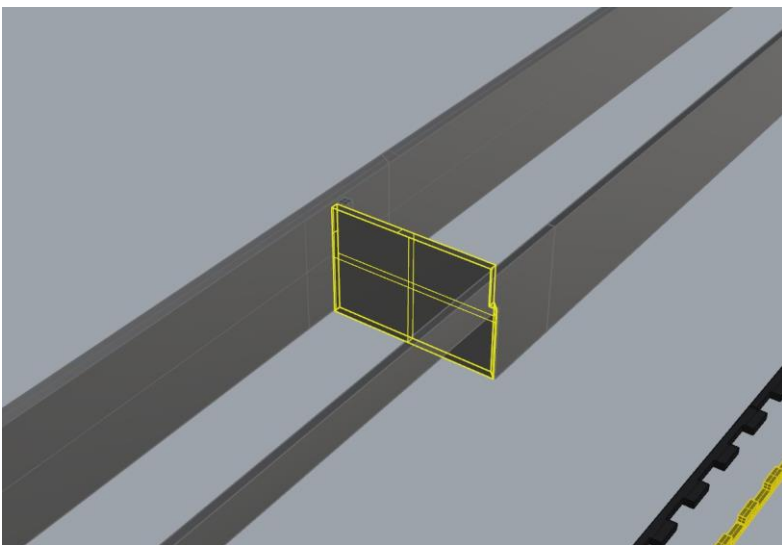
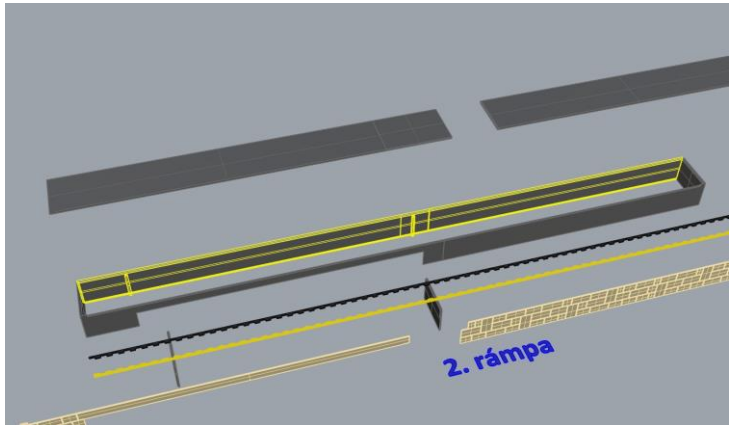
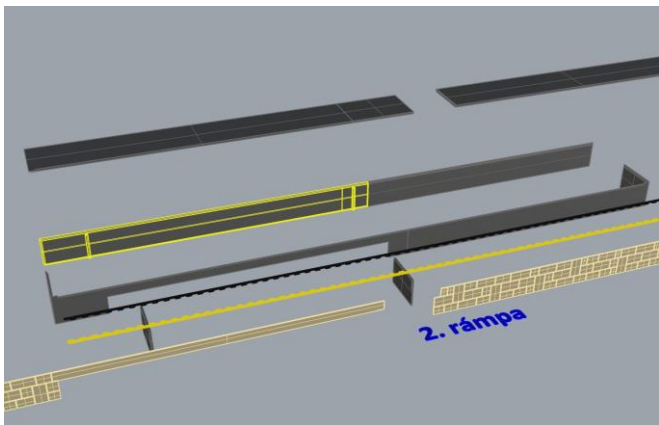
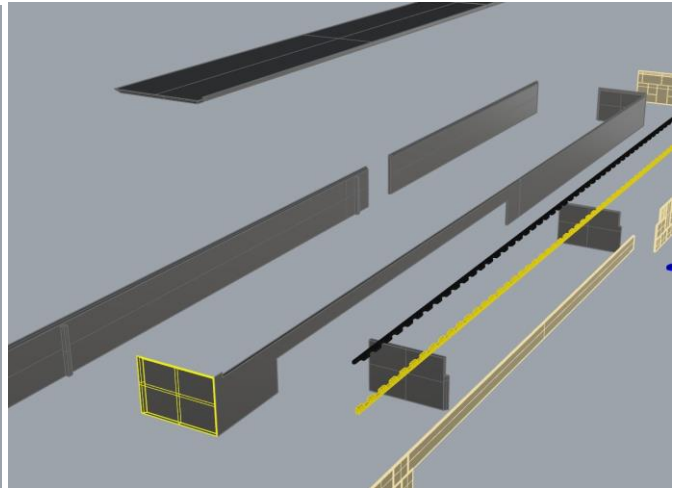
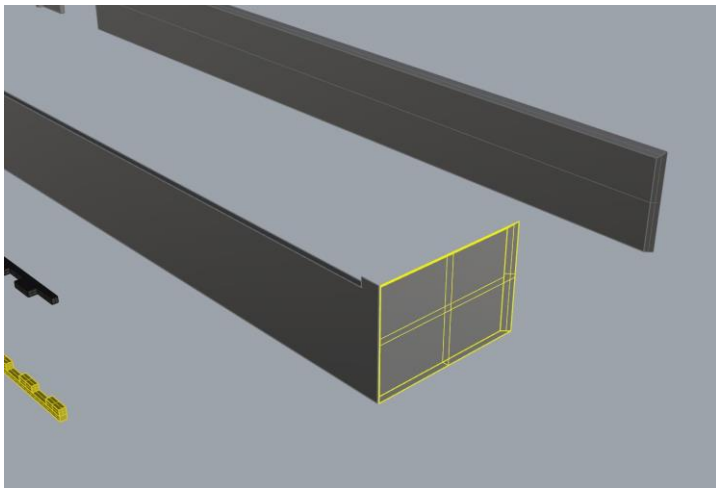


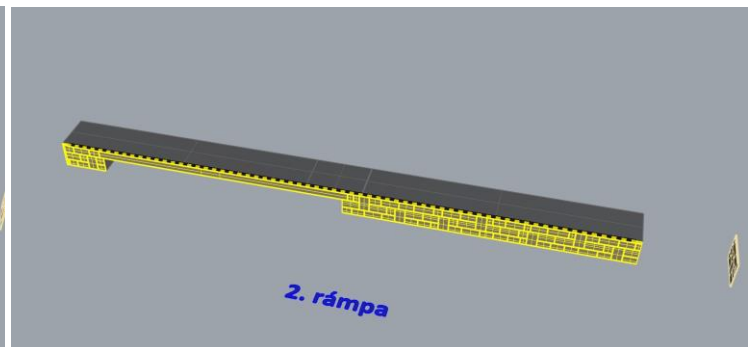
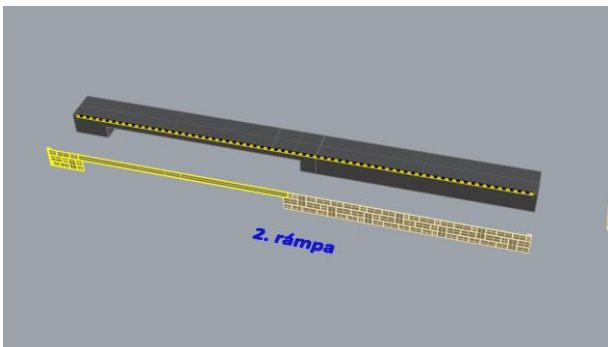
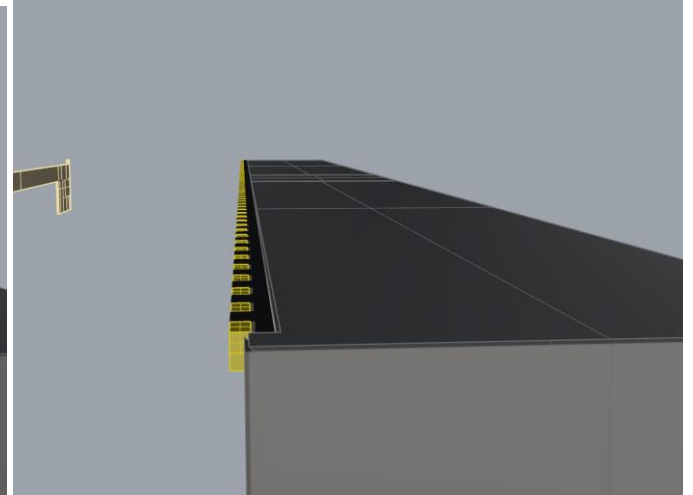
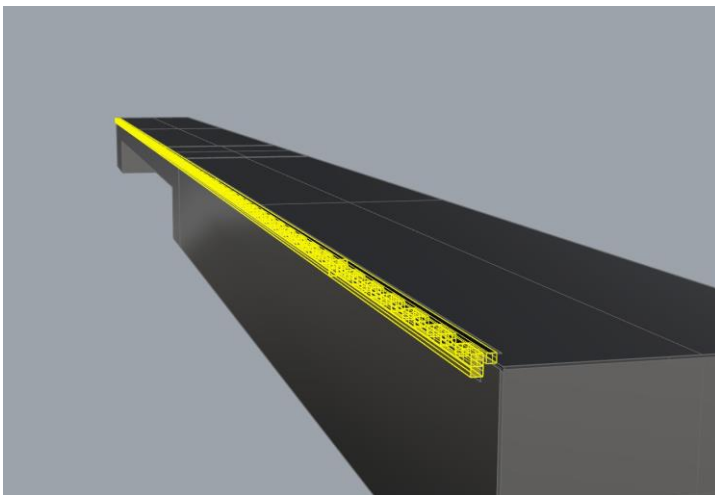
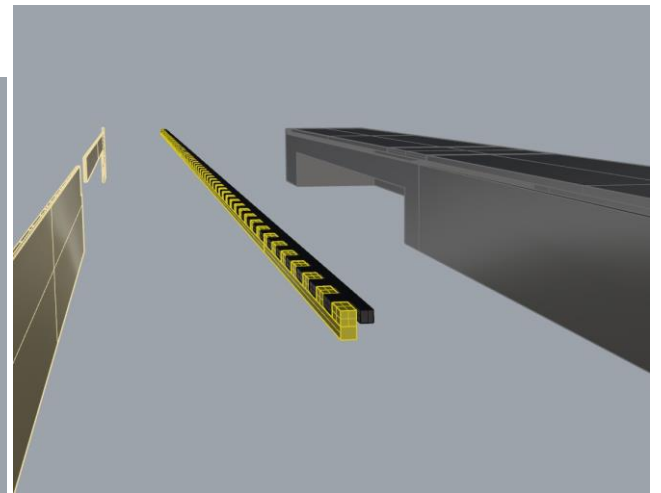
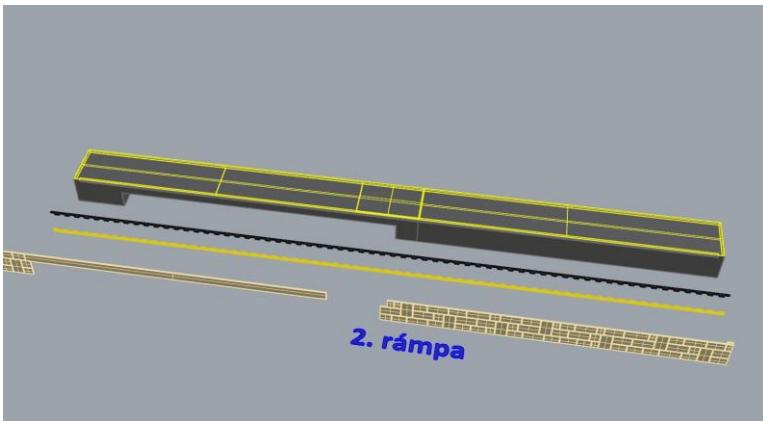
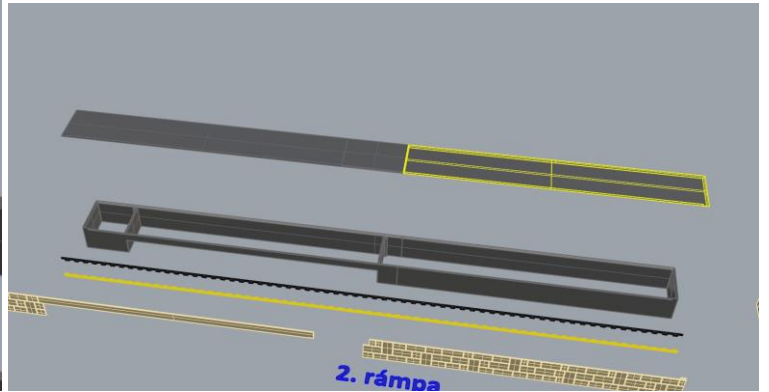
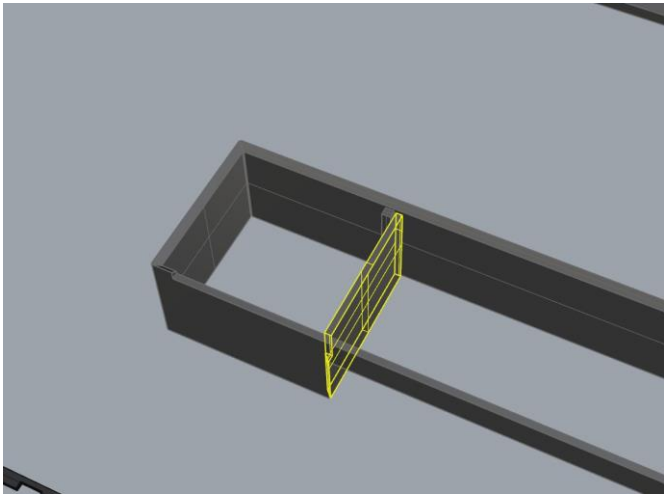


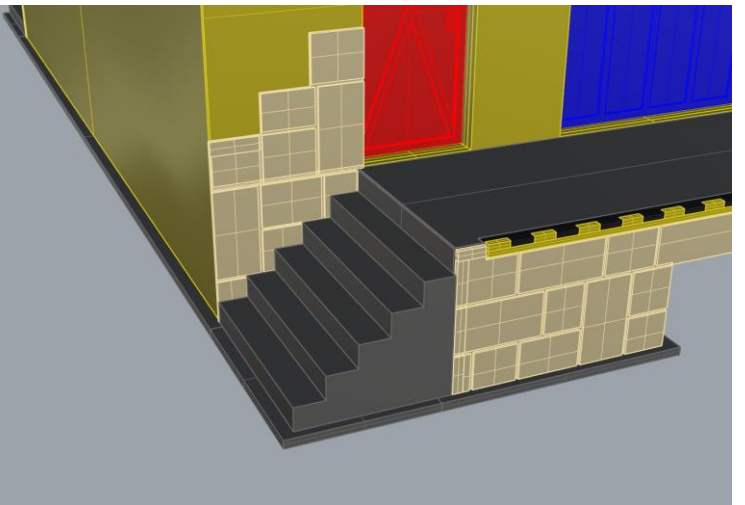
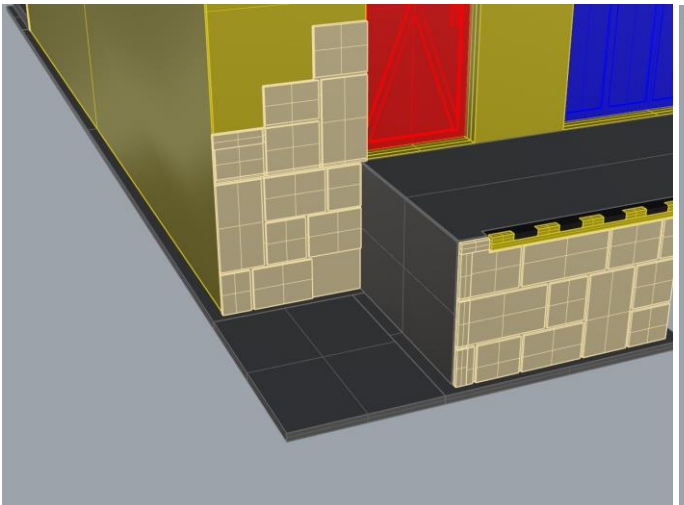
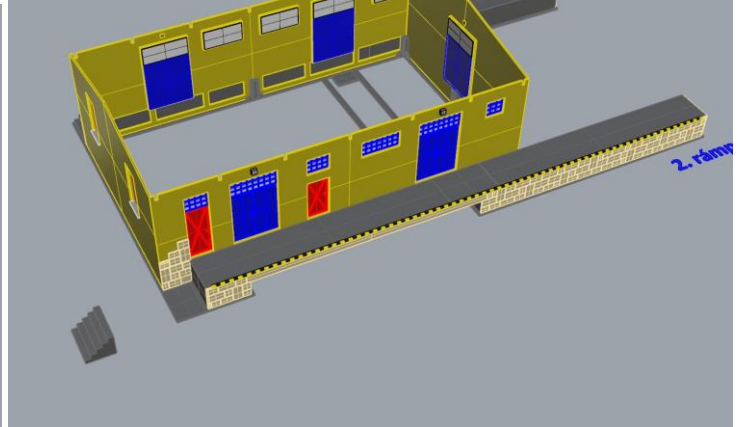
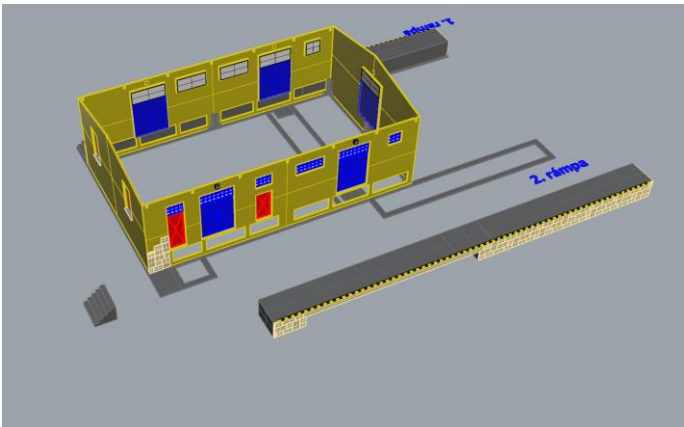
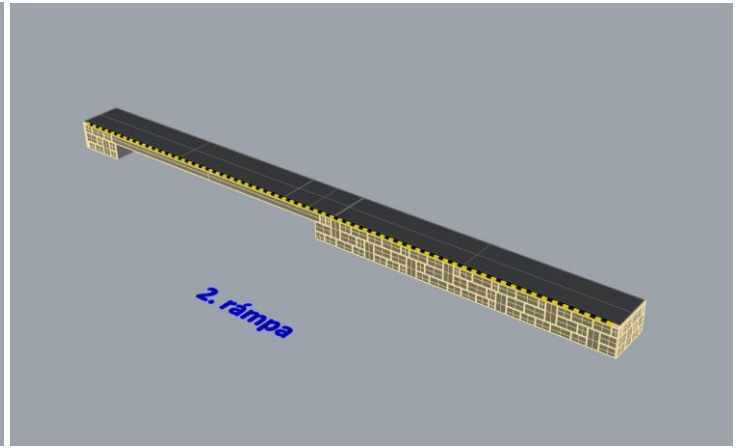
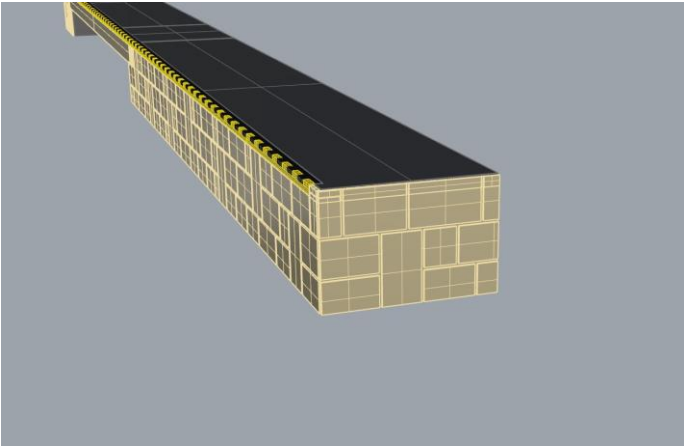




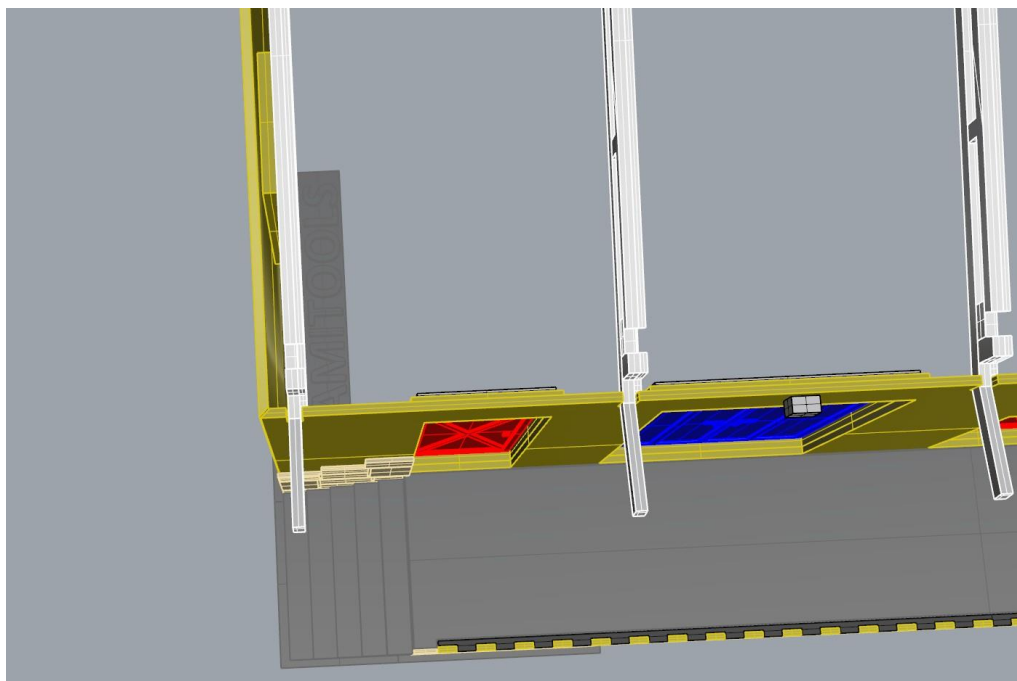
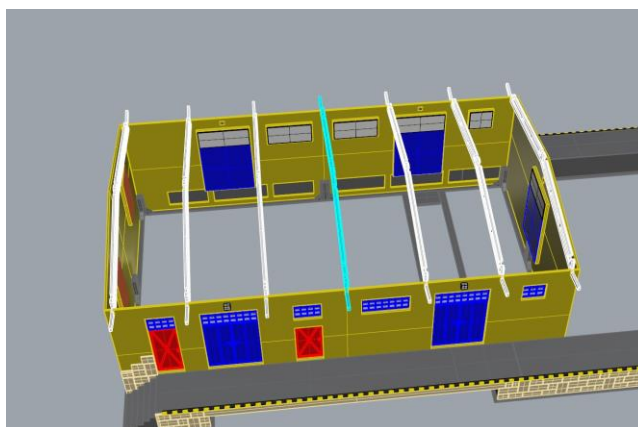
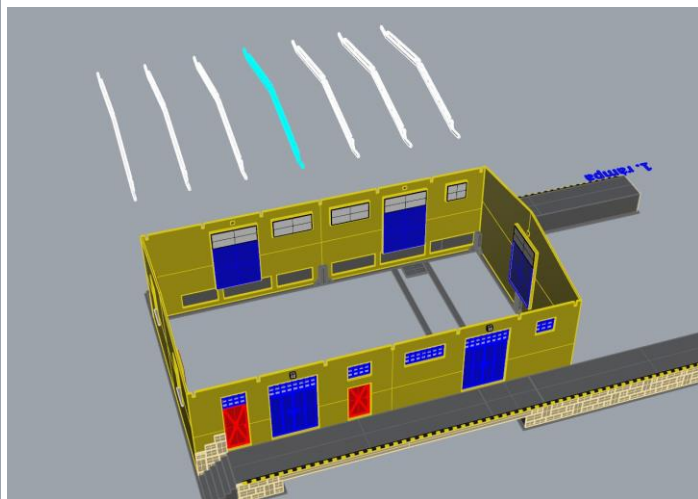
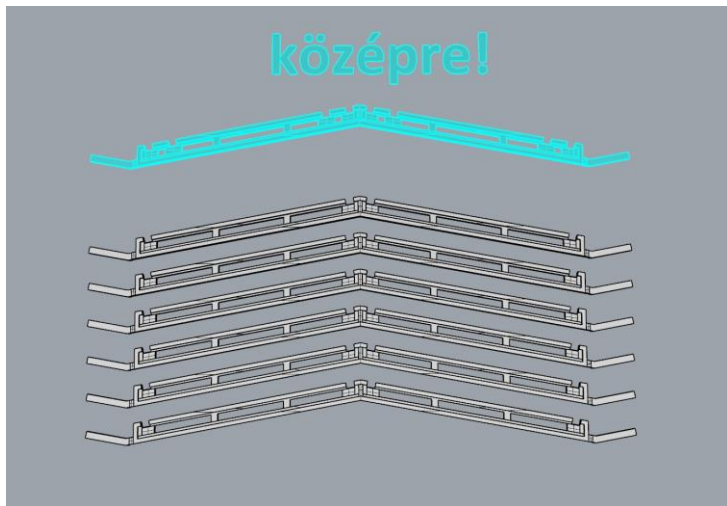


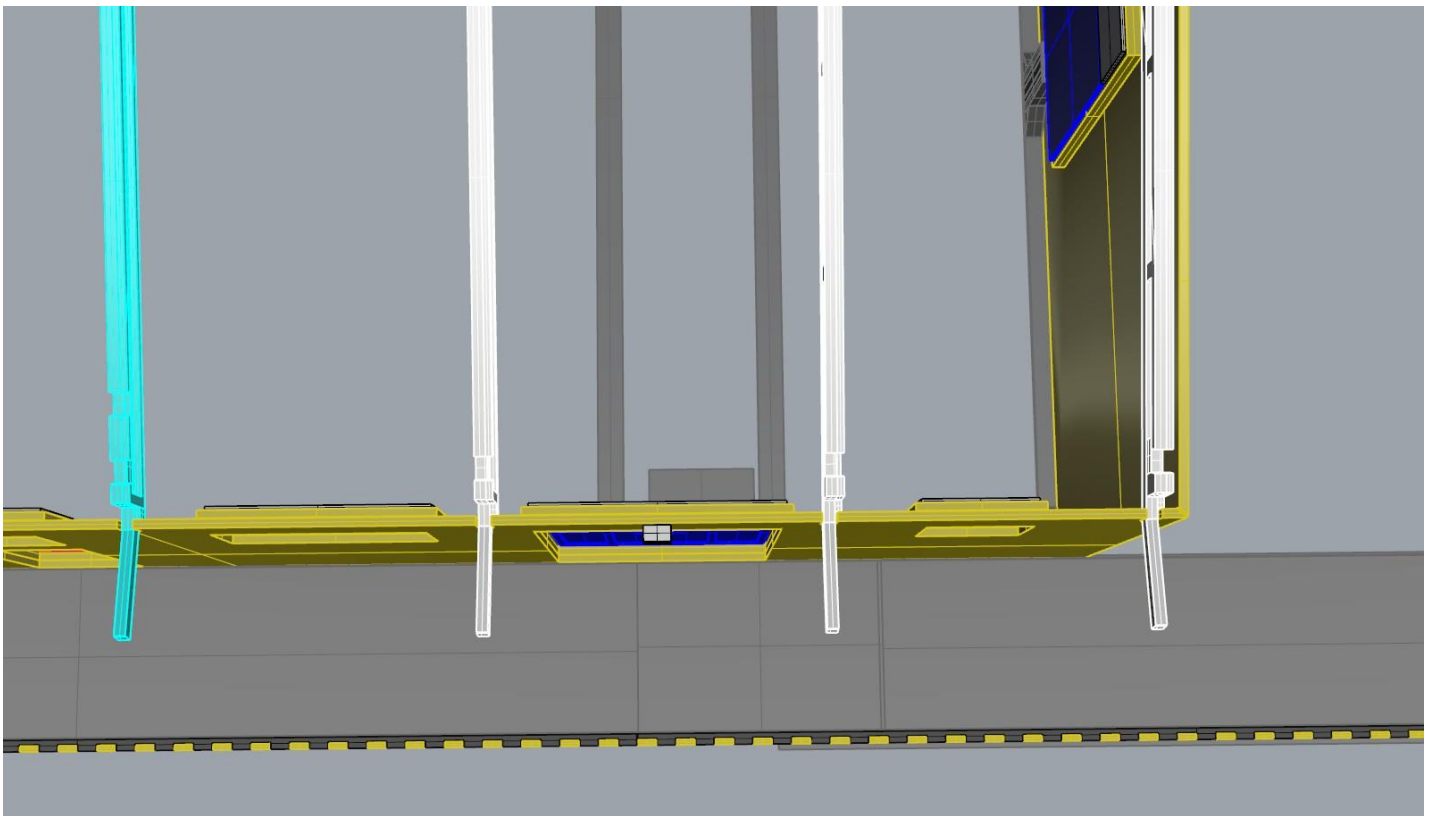
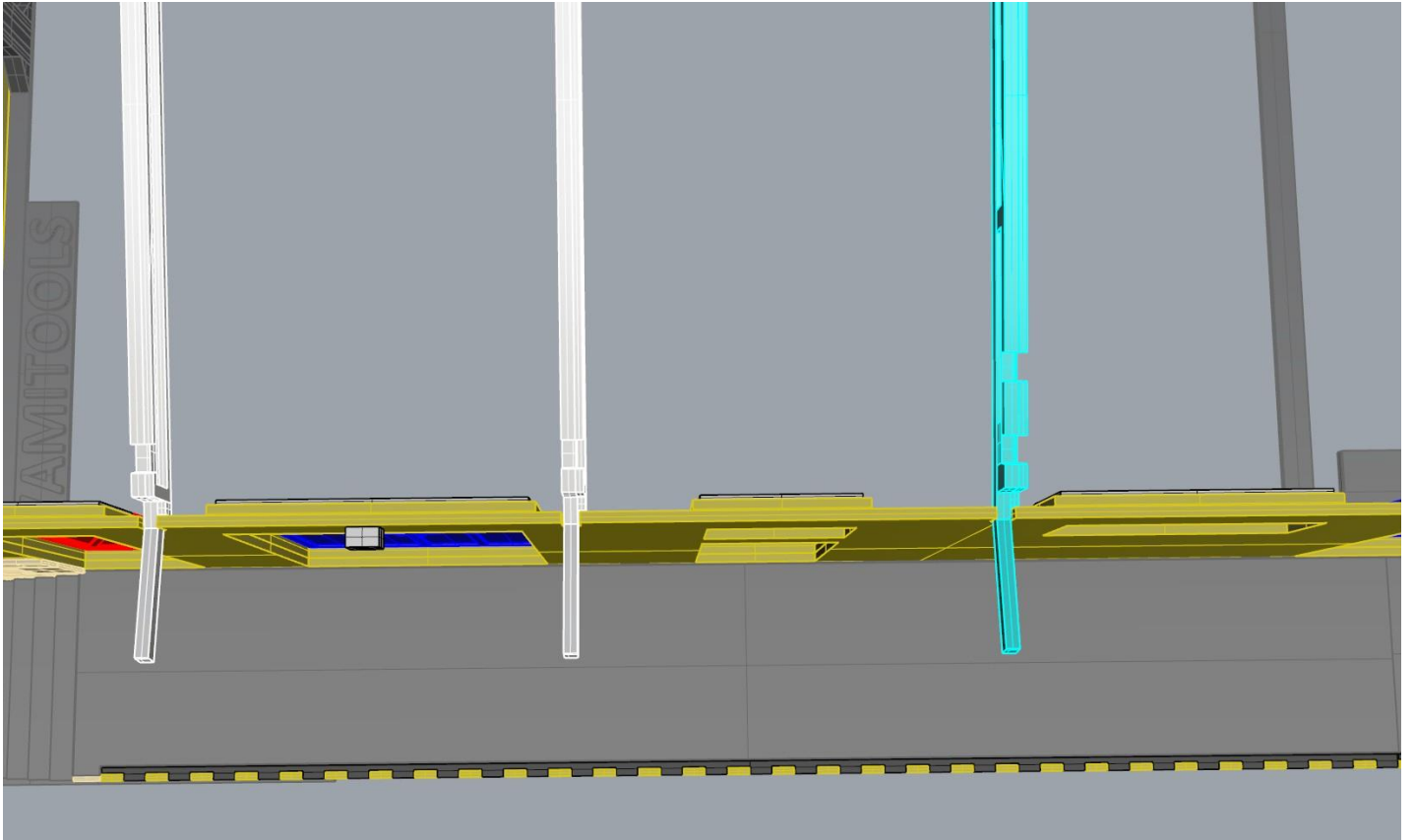


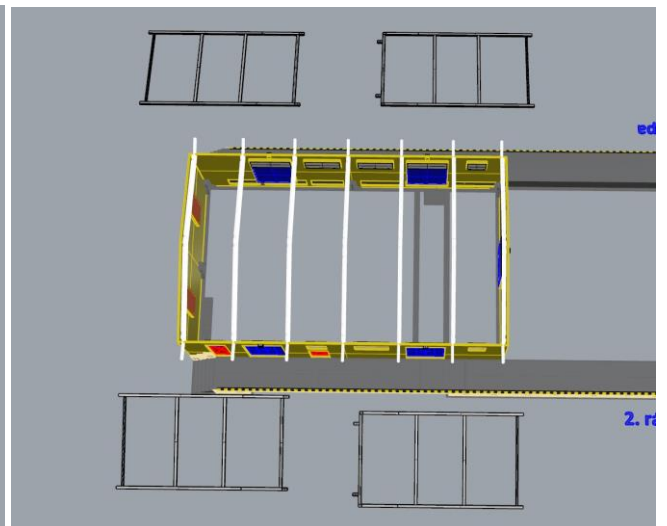
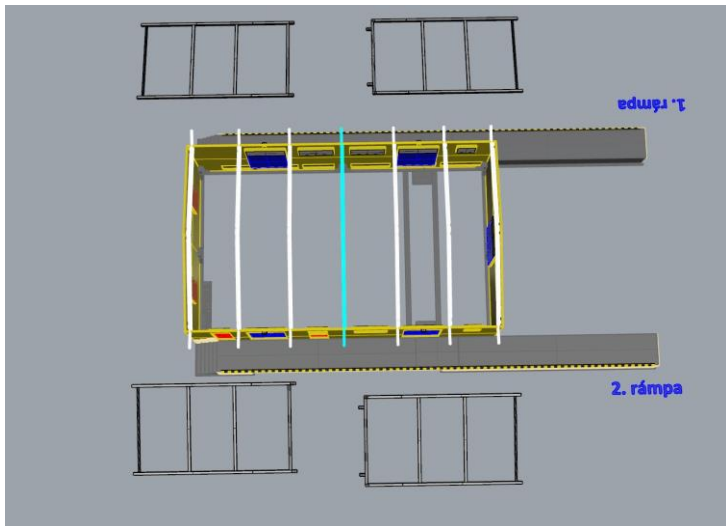
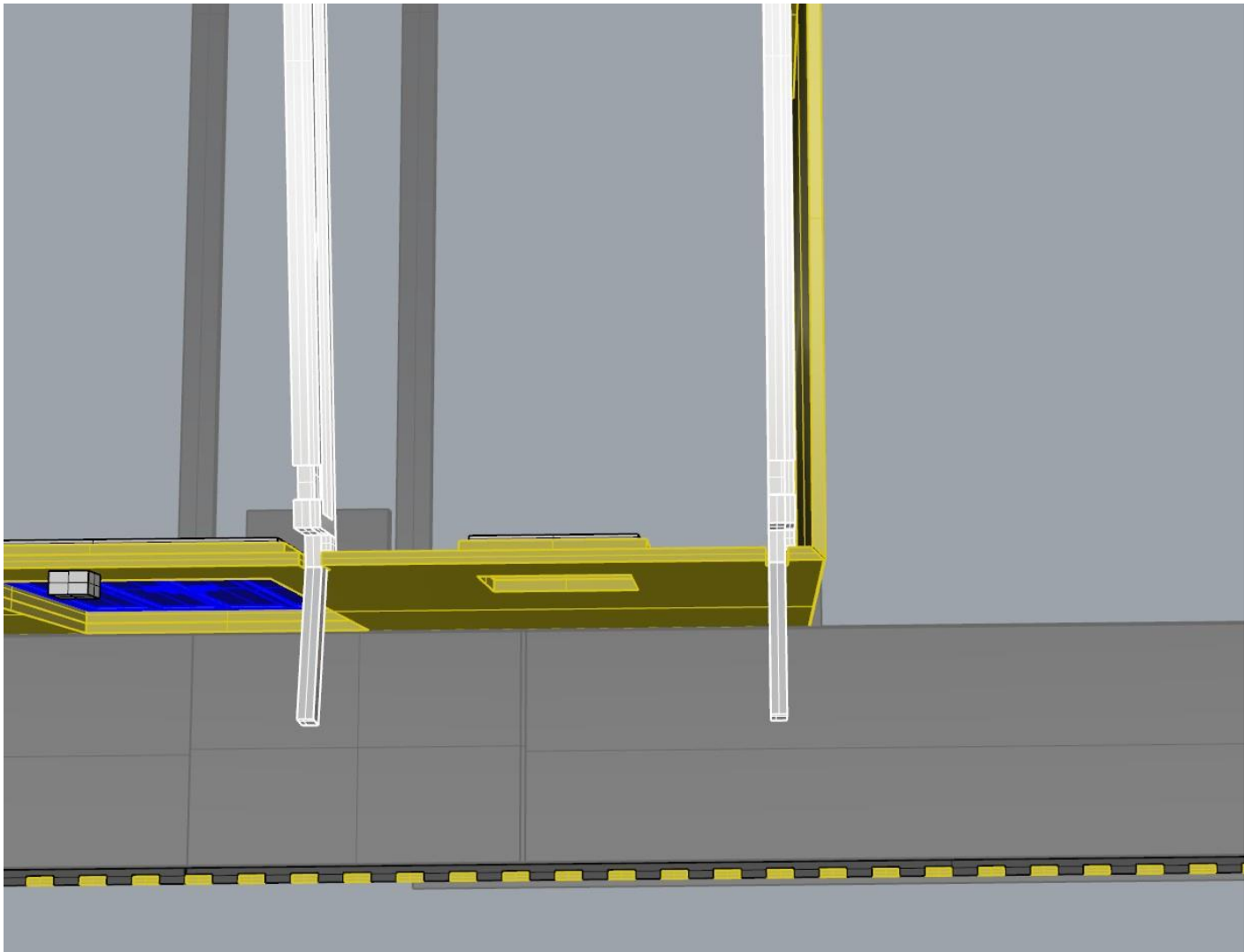


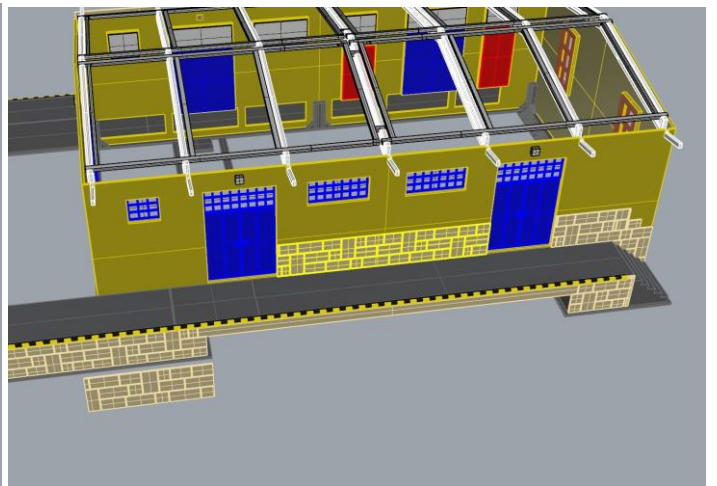
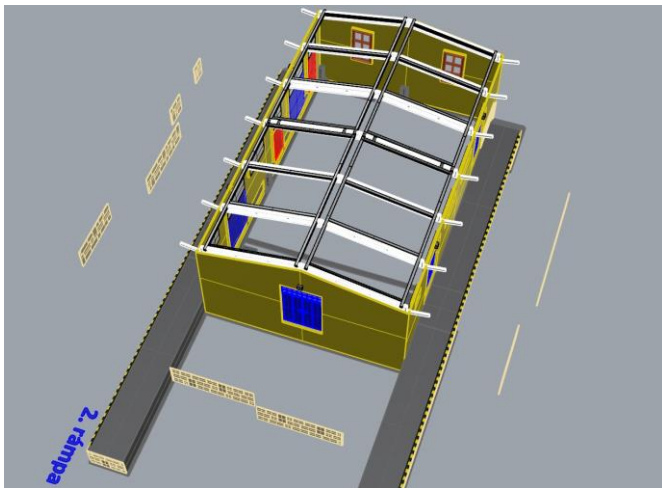
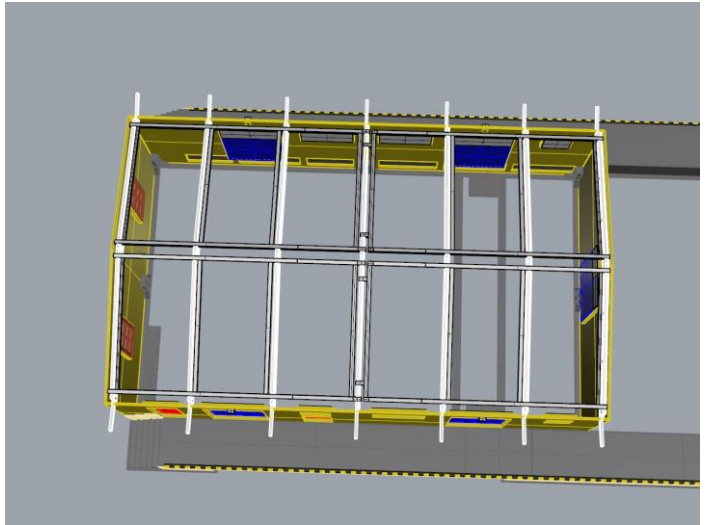
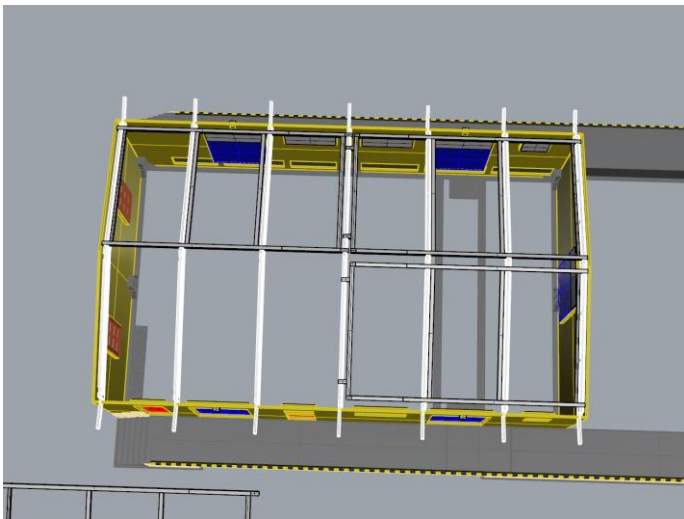
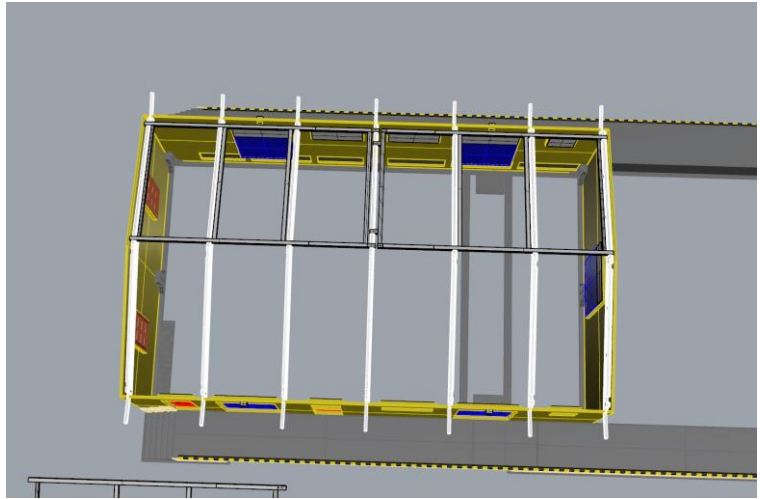
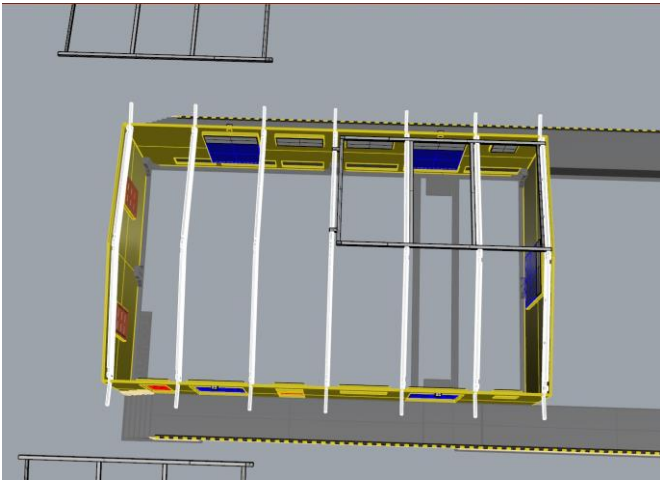


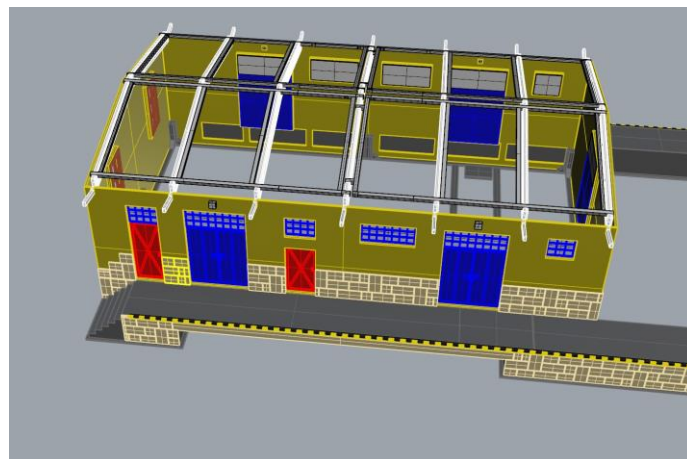
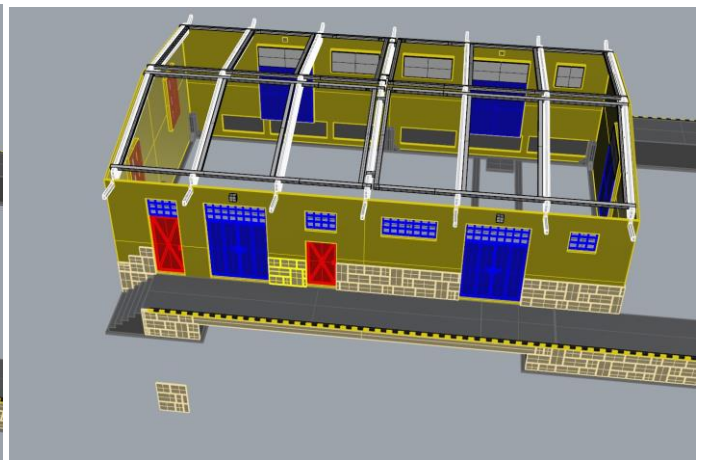
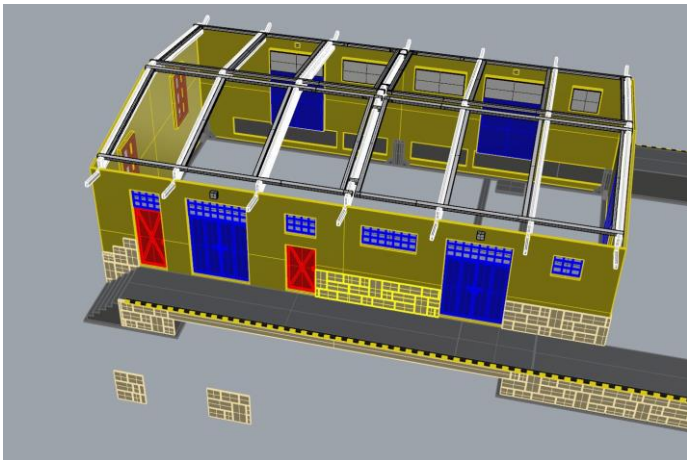
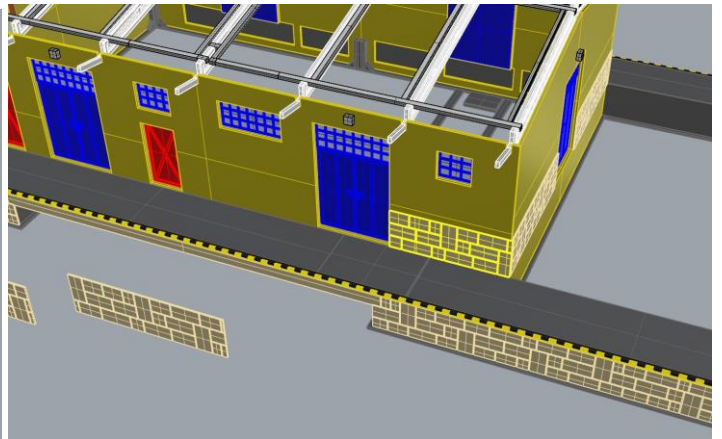
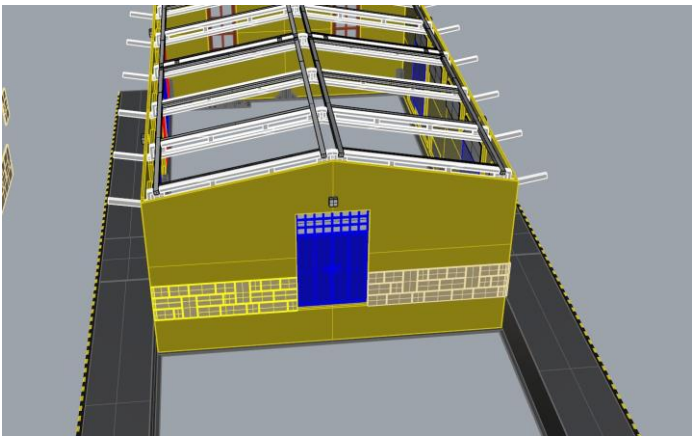
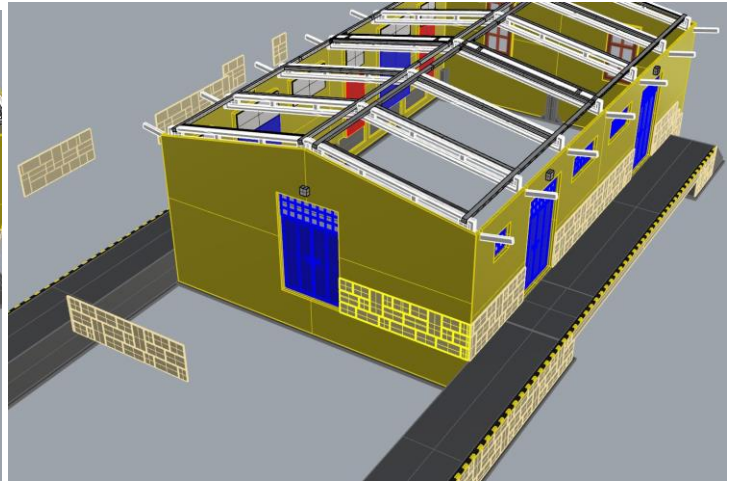
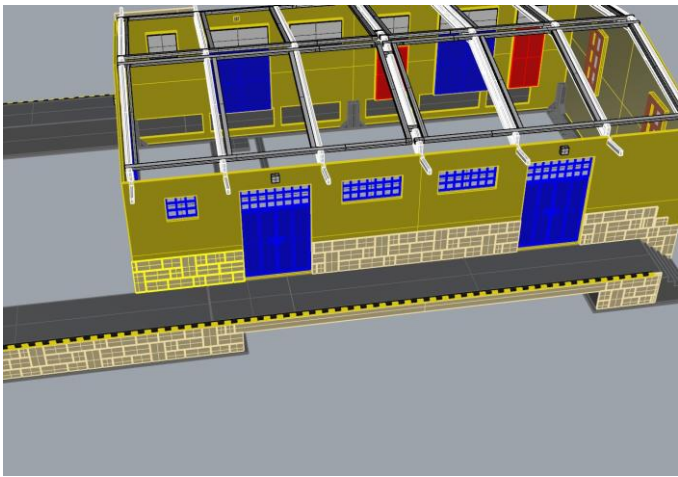
A gerendák közül 6db egyforma és 1db eltérő formájú van. Utóbbi cián színnel lett jelölve. Ezt középre kell tenni! Másik dolog amire figyelni kell, hogy a gerendát milyen irányban tesszük a helyére. Nézzünk meg egy gerendát. Van mindkét oldalán egy tömör kis kiálló felfelé hajló végződés, mely ha betesszük a helyére, a falakon kívülre fog kerülni. Ehhez a kiálló részhez képest a belső tartórész vastagabb. Figyeljük meg a képeket, és annak megfelelően tegyük a helyére. (Alább a nagyobb méretű kepeket kell nézni, ott látszanak.) A belső megvastagított rész az ajtós tűzfal irányába álljon az összes gerendánál.

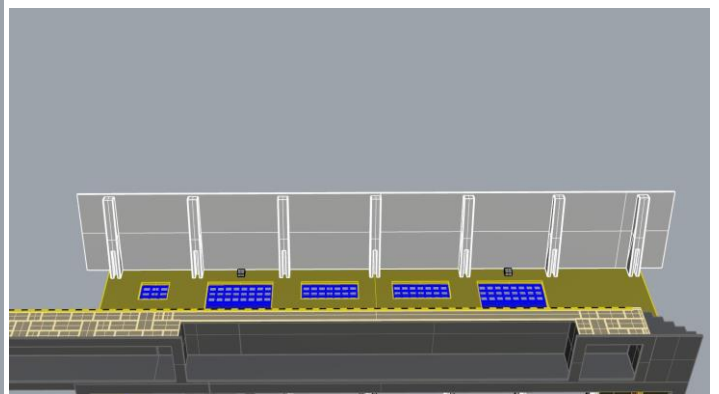
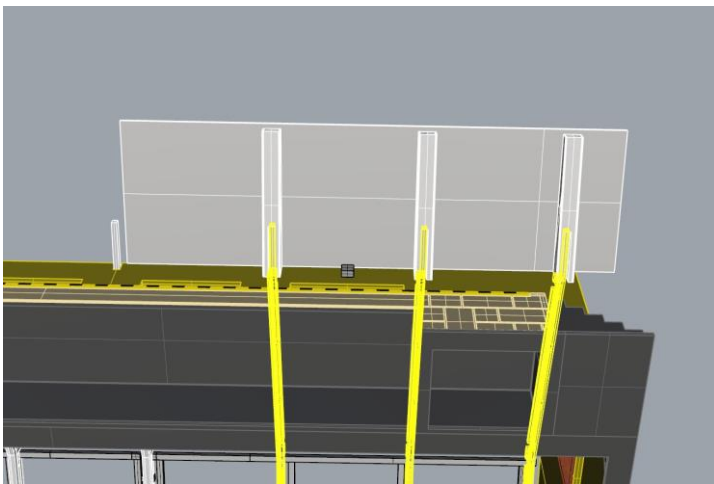
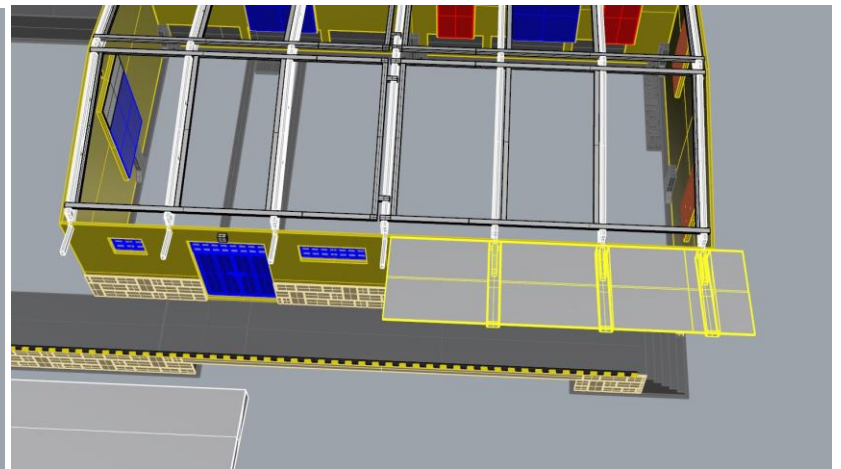
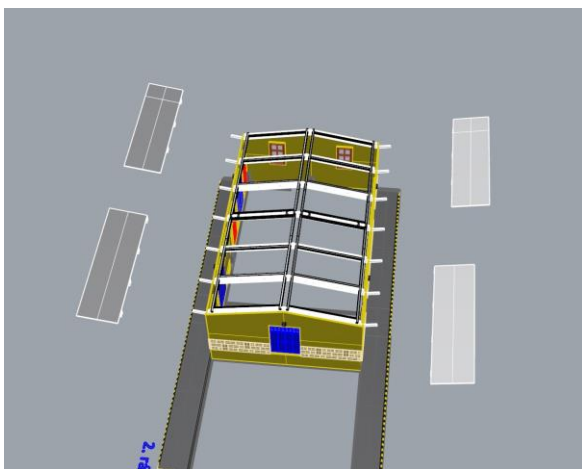
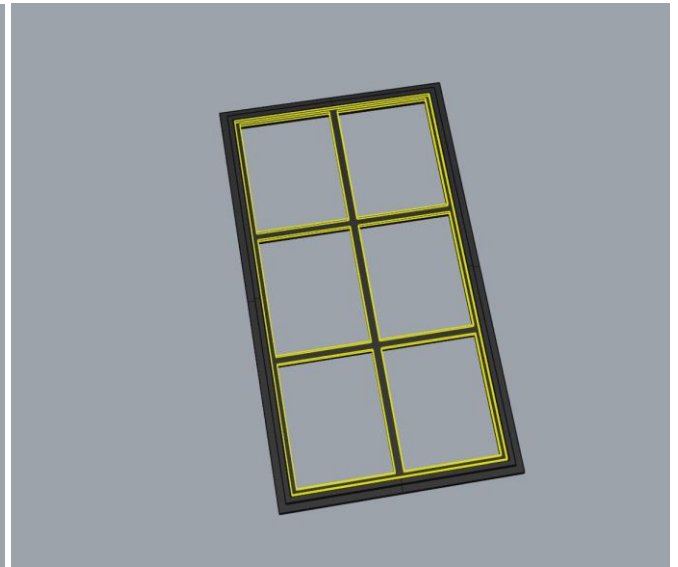
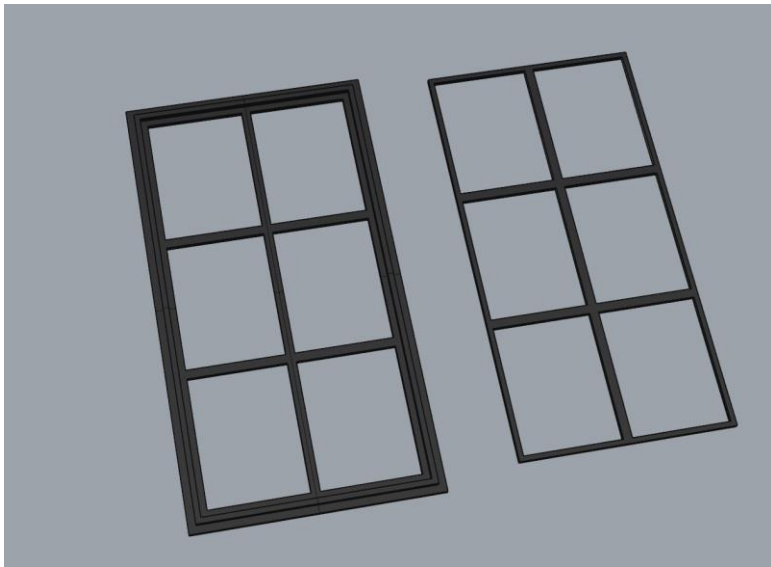


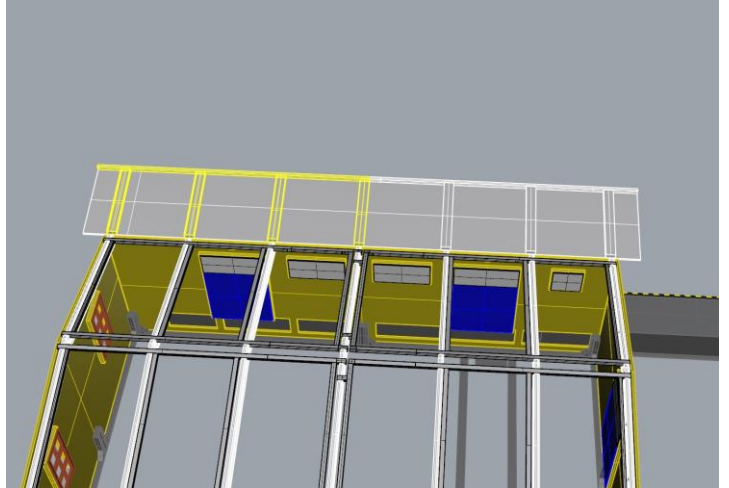
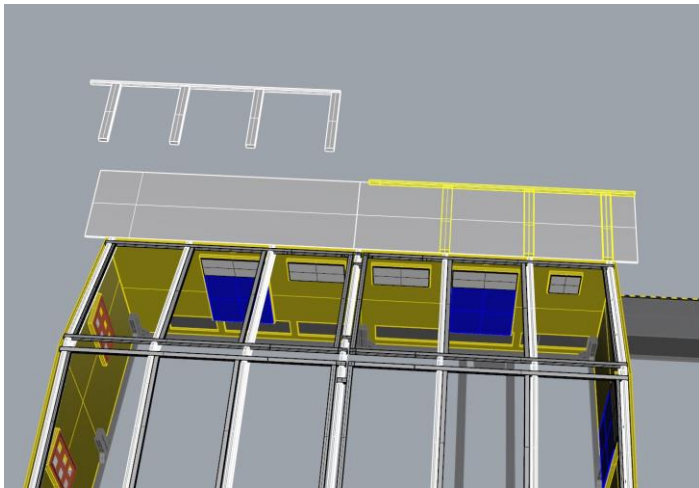
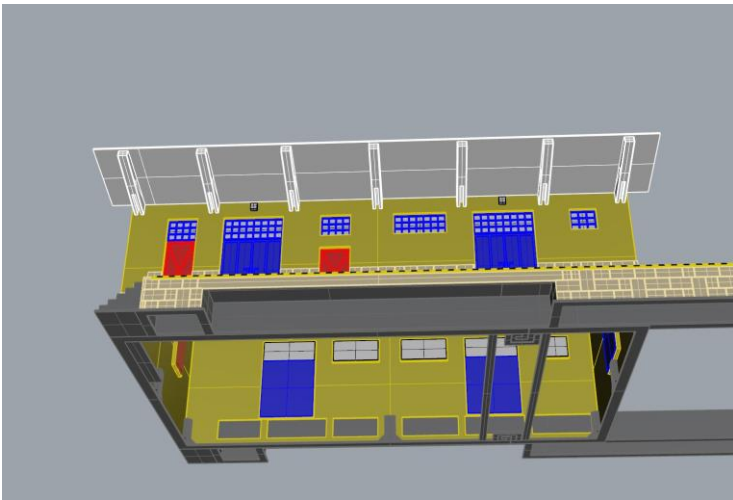
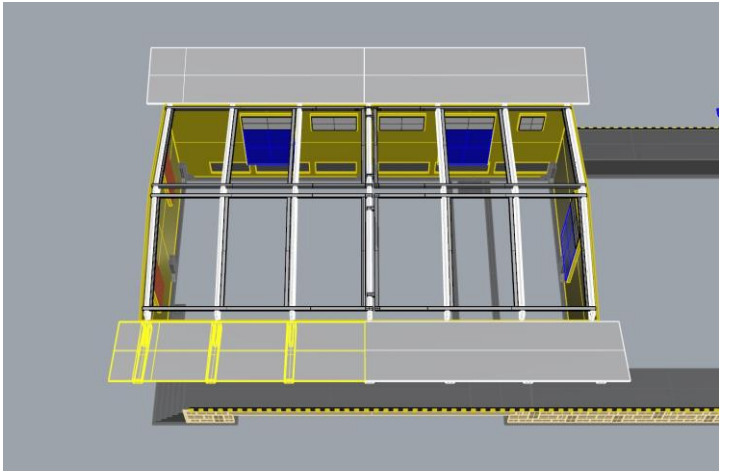
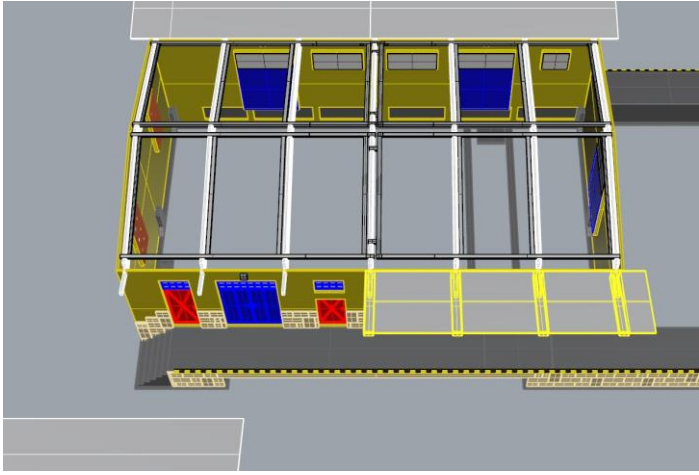


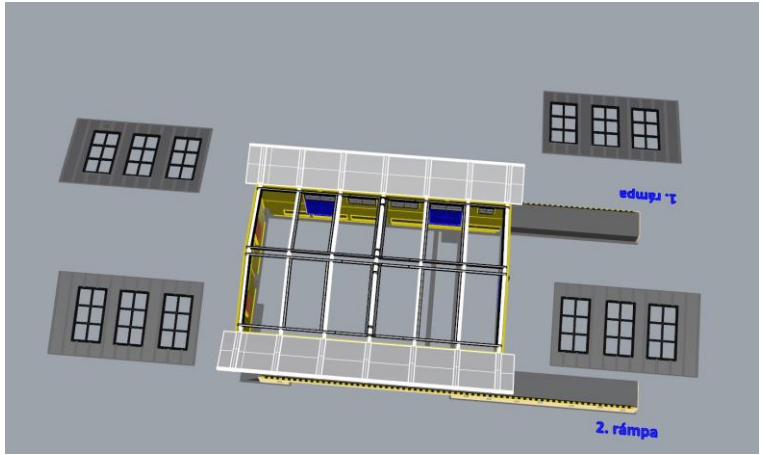
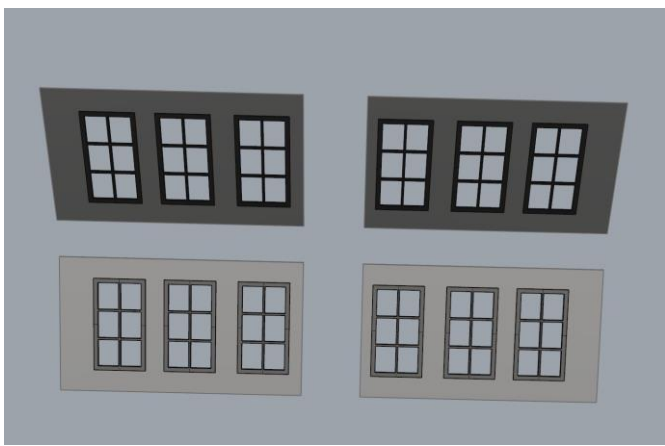
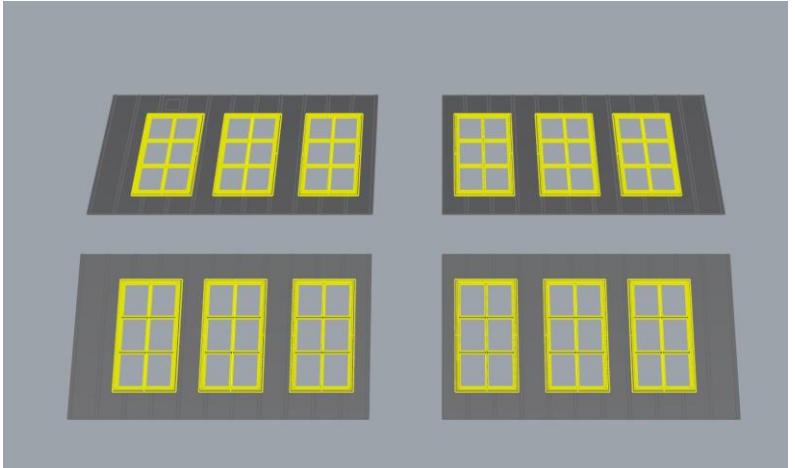
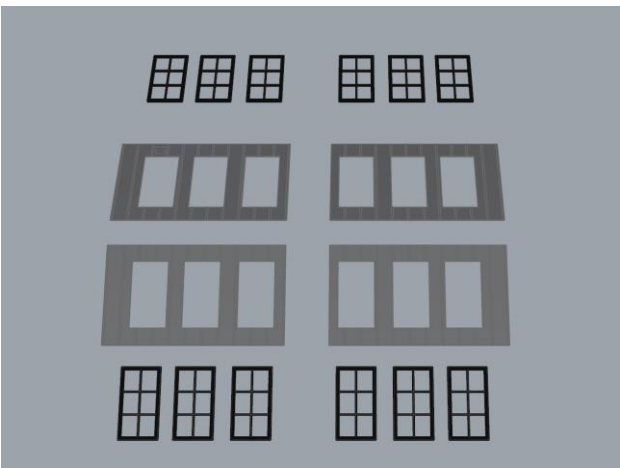
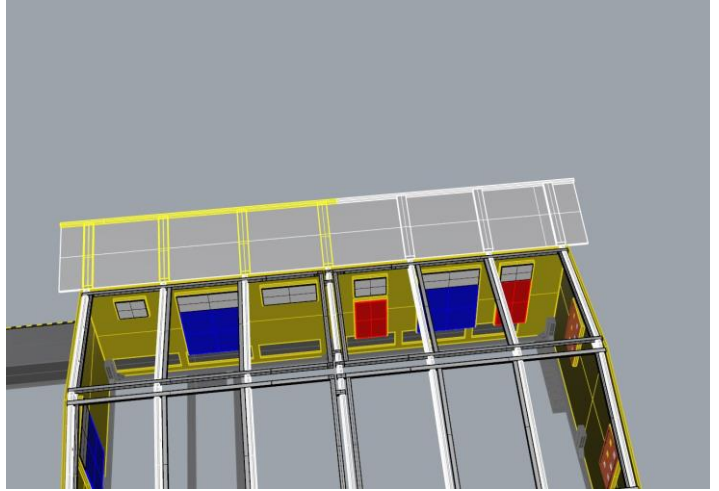
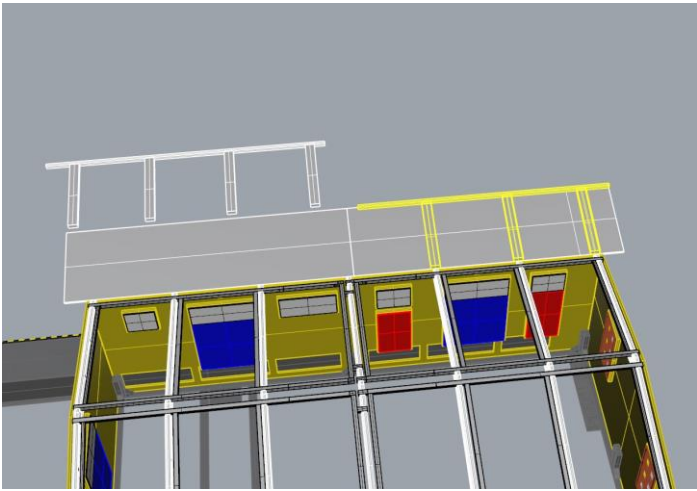


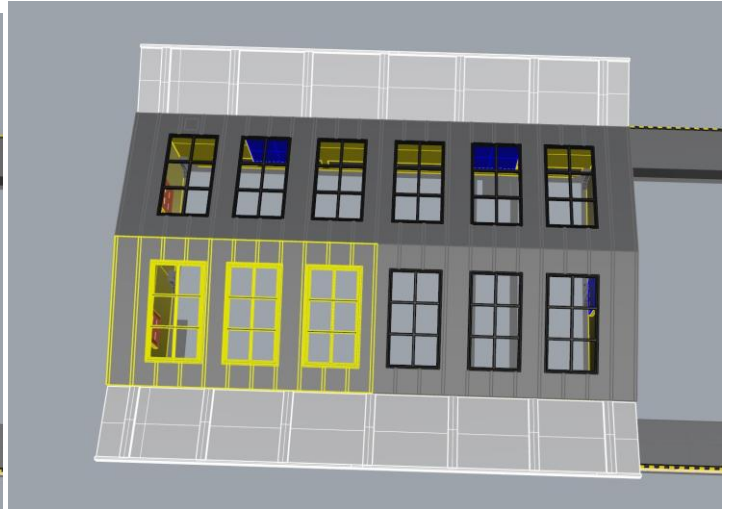


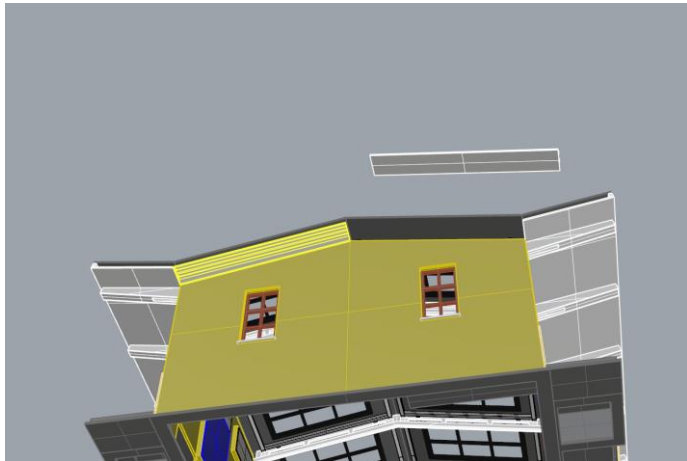
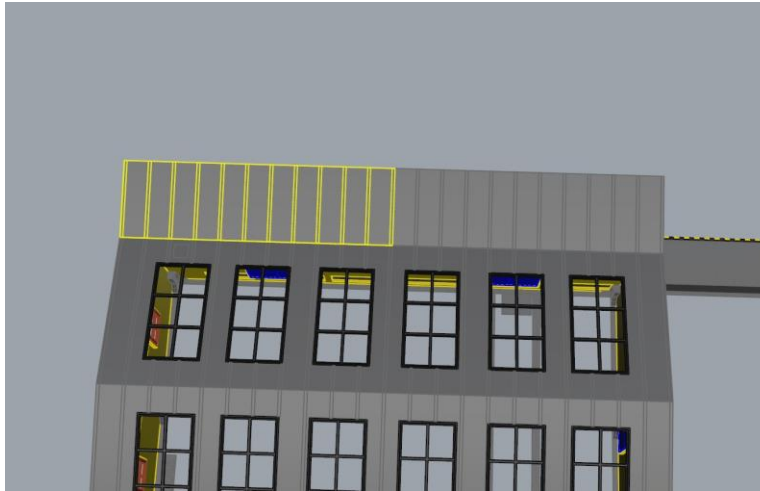
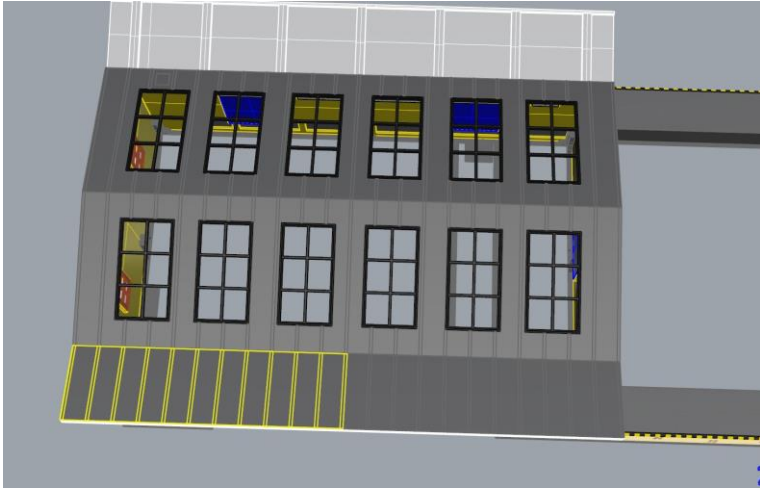


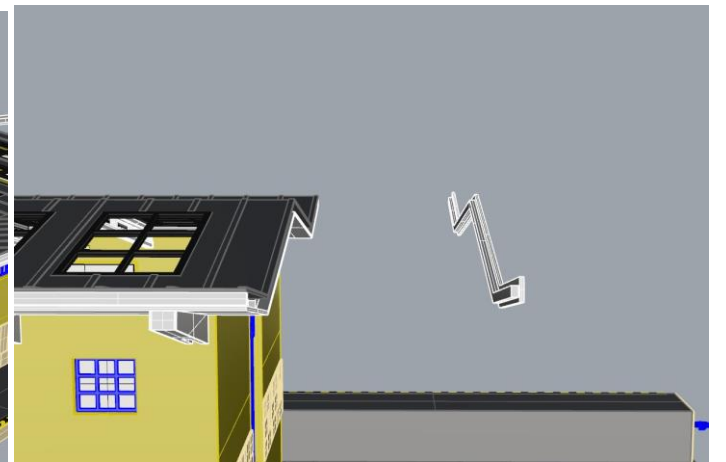
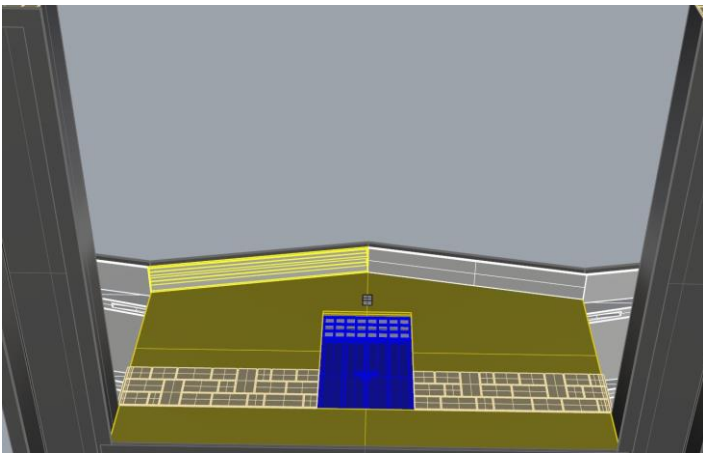
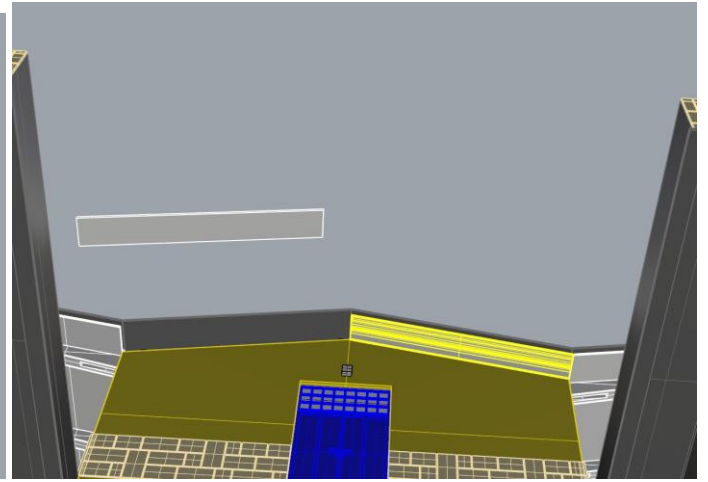
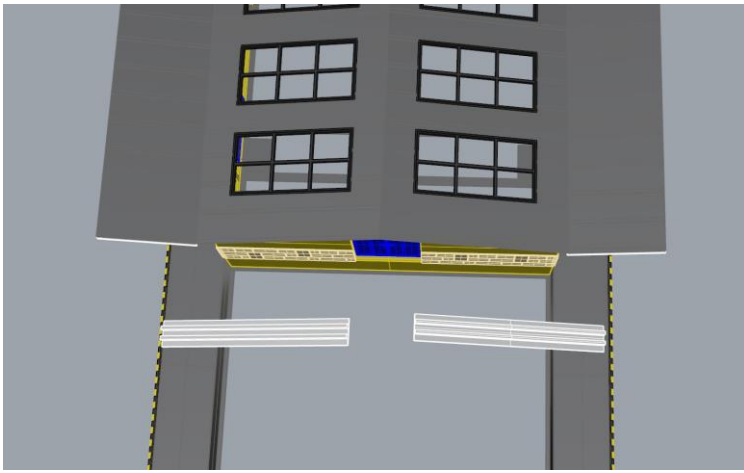


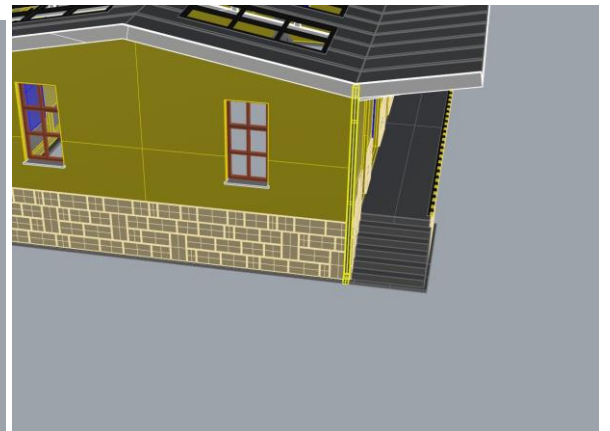
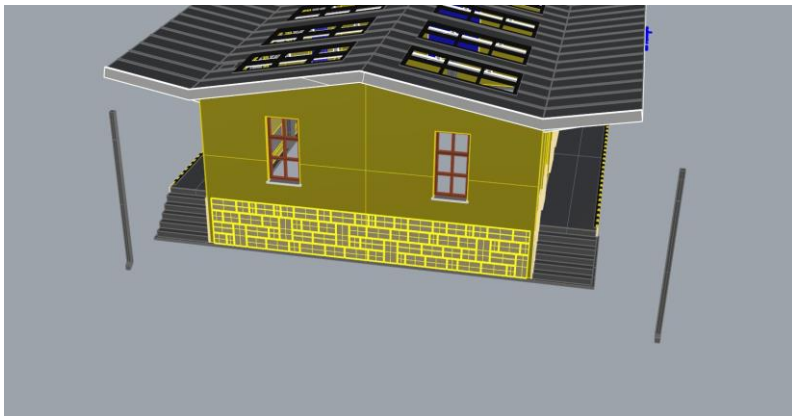
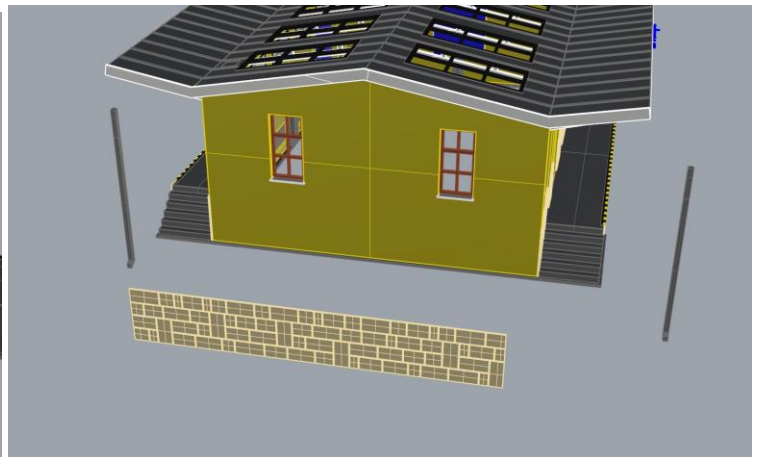
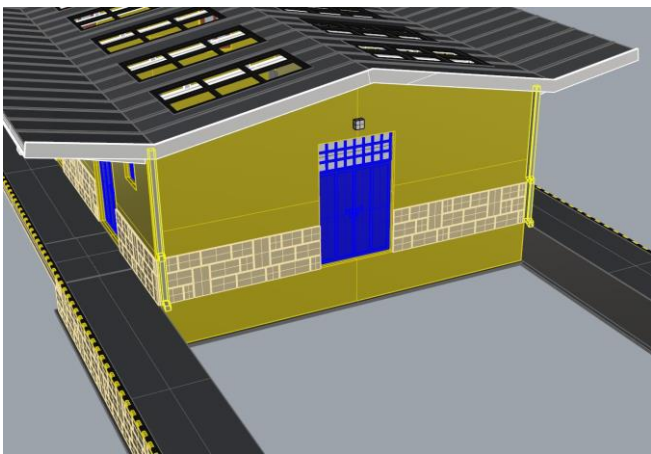
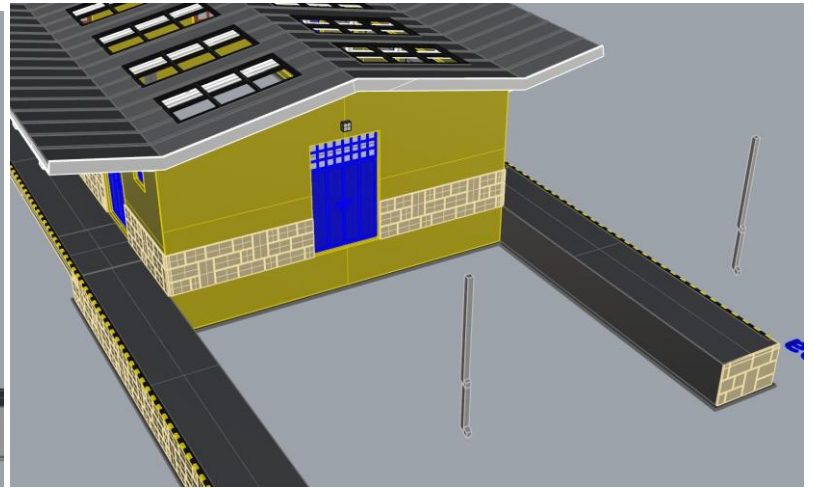
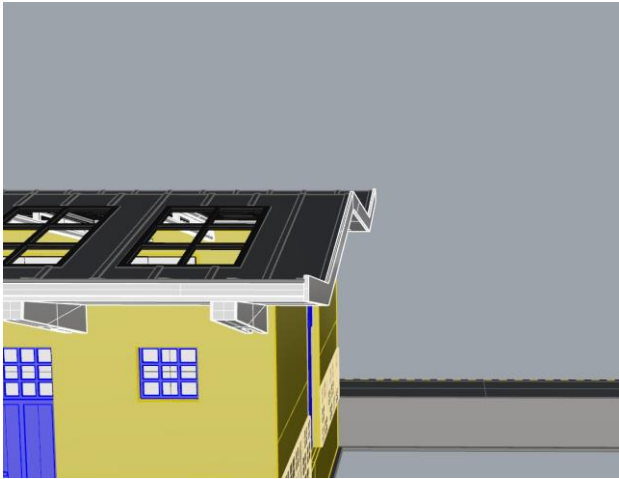


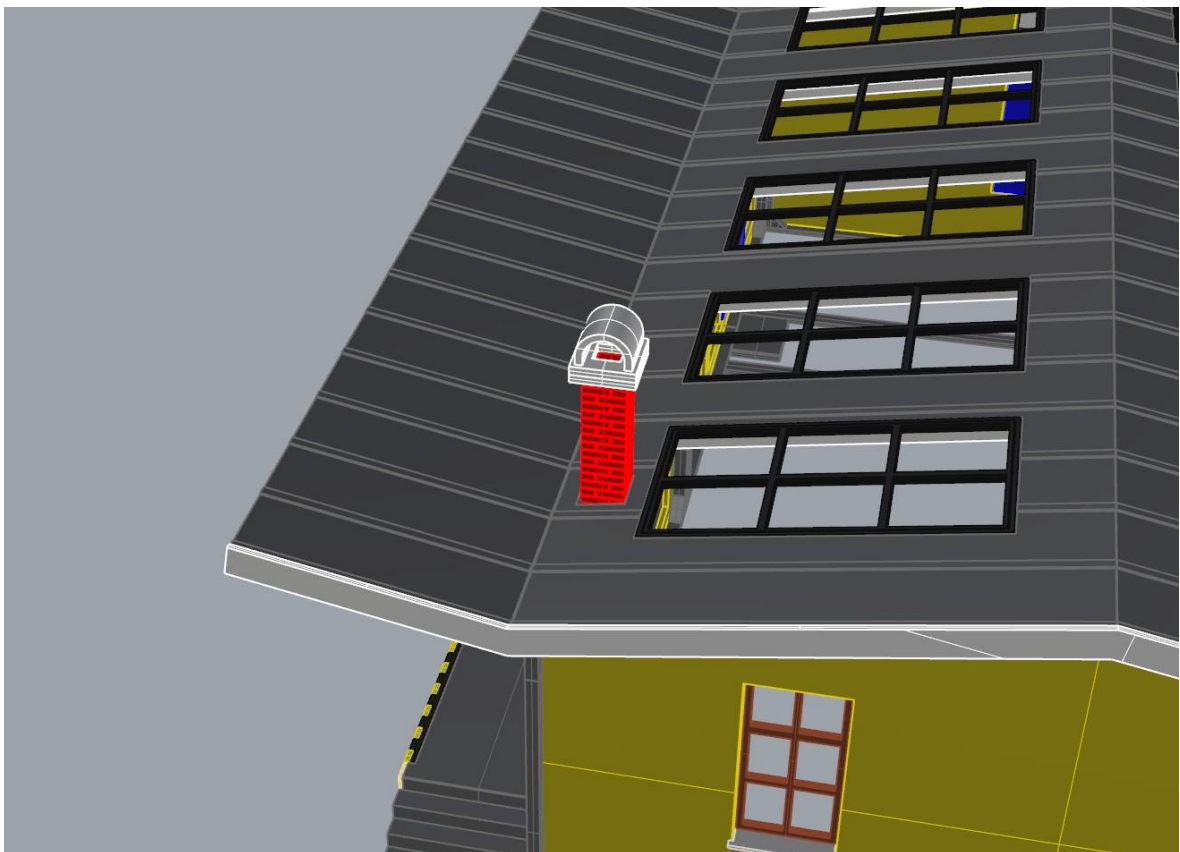
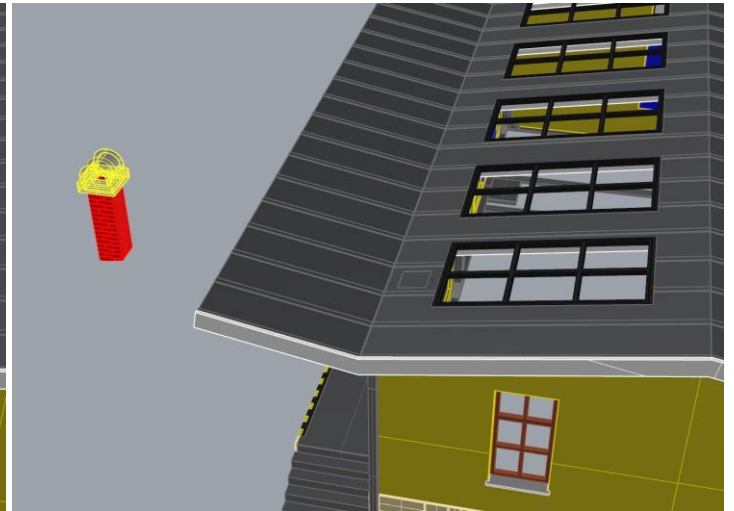
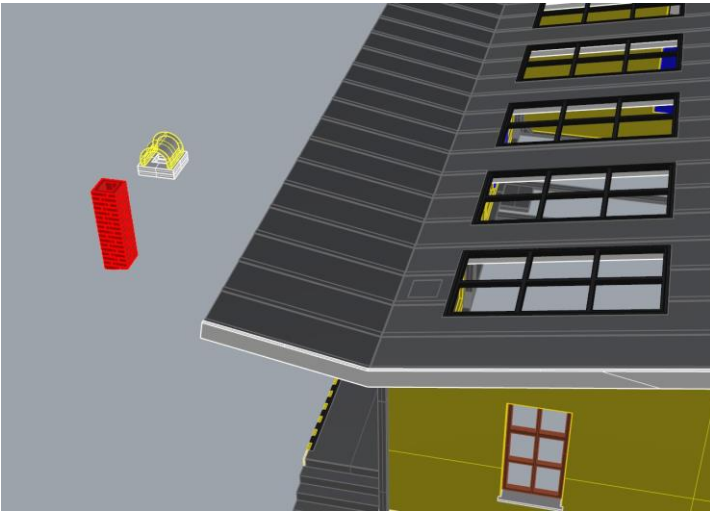
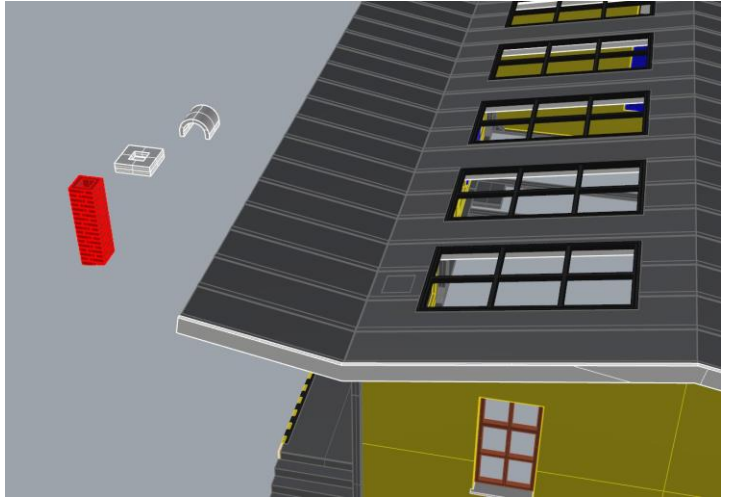
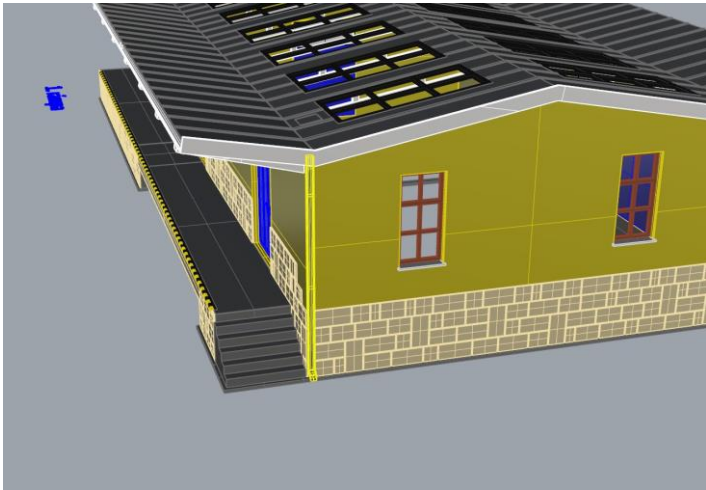












Készen is vagyunk.

