

# VAMITTOOLS Vasúti raktárépület – 508-as típus – TT

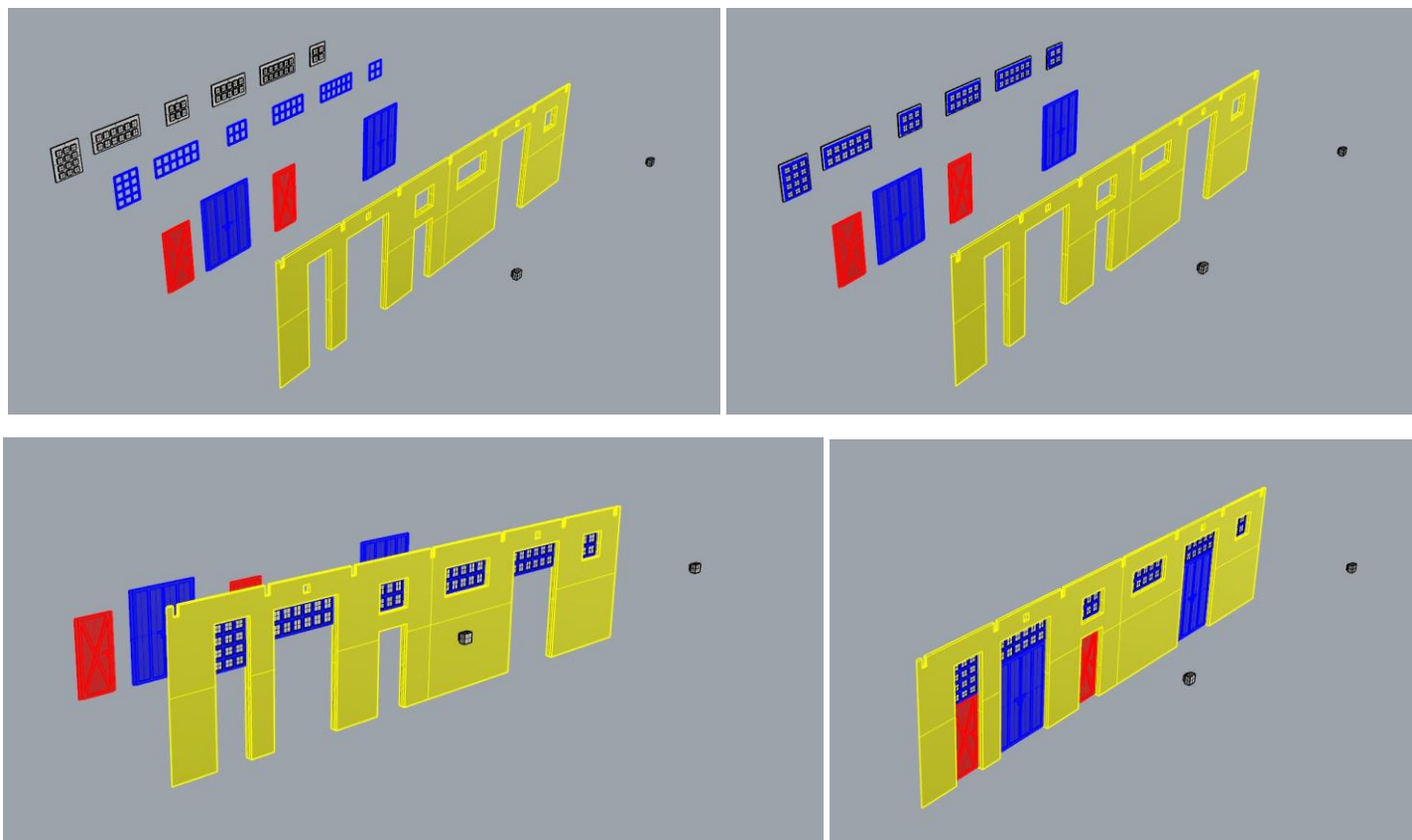
2023.04.22. előtt vásárolt termék

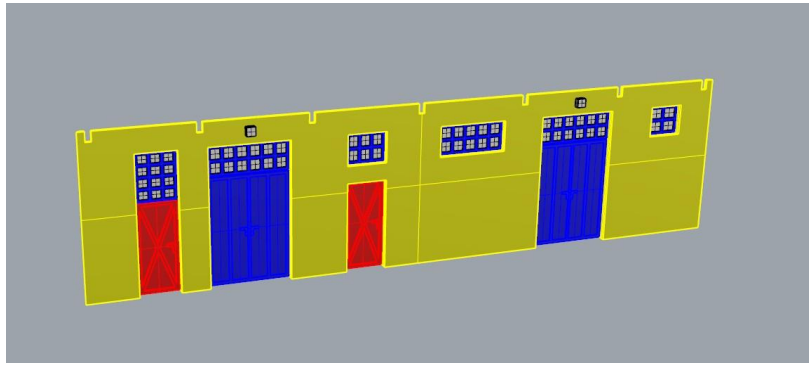


**Maketragasztót (Rewell stb.) NE használjanak termékeinkhez, mert az oldószere kárt tehet az egyes alkotóelemekben (főleg a vékonyakban)! A következő ragasztókat ajánljuk: kék tubusos Technokol Rapid (acetonmentes), kétkomponenses ragasztó (Epoxy Rapid, Araldite stb.). Bővebb információ a ragasztással, festéssel stb.-vel kapcsolatban a minden termék oldalán elérhető általános tájékoztatóban van!**

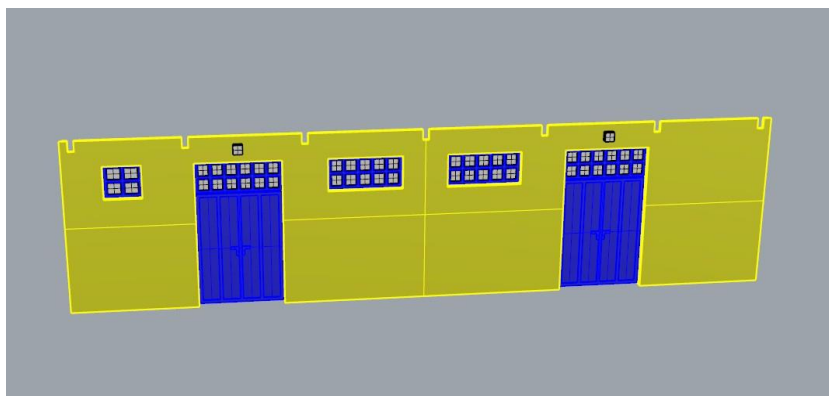
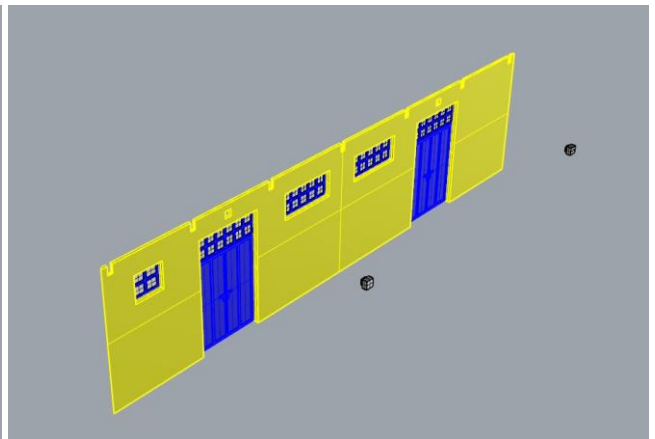
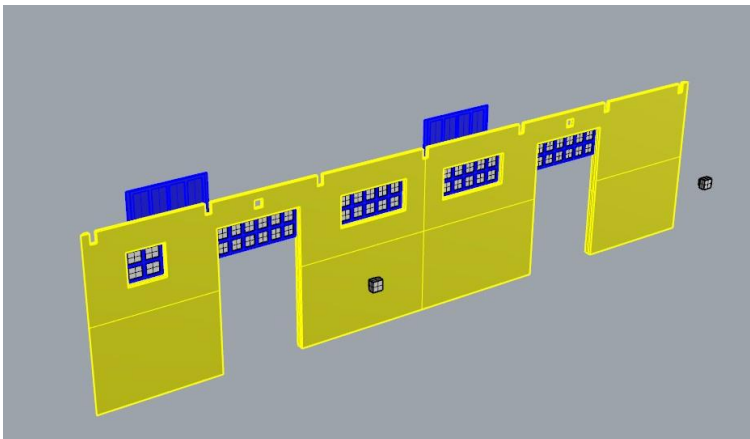
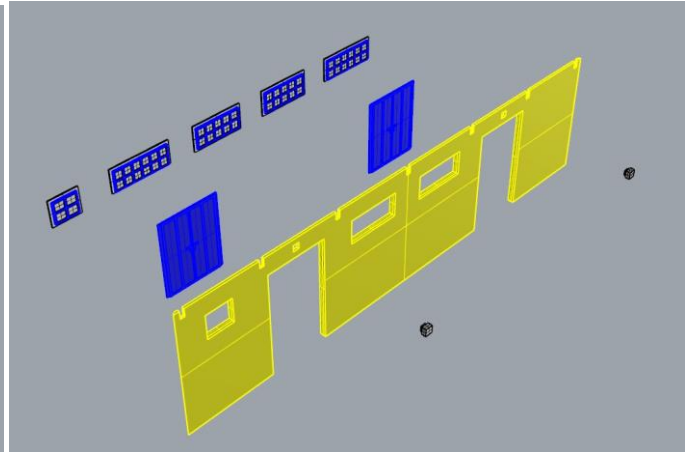
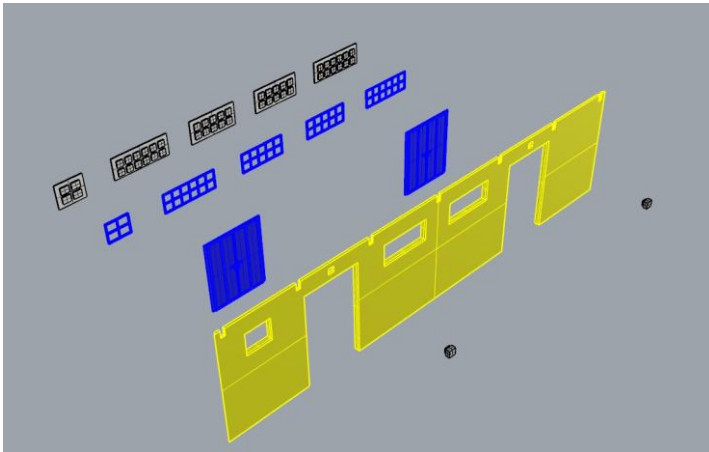
Az összerakást az oldalak külön-külön történő összerakásával kezdjük. Minden falrésznél a sima (fényes) oldal néz kifelé! Kövessük a képeken látható lépéseket. Célszerű az épület belső oldalára karton maszkolókat tenni, hogy a fény ne világítsa át az épület falait. A karton maszkolókat az útmutató külön nem jelzi!

1. oldal:

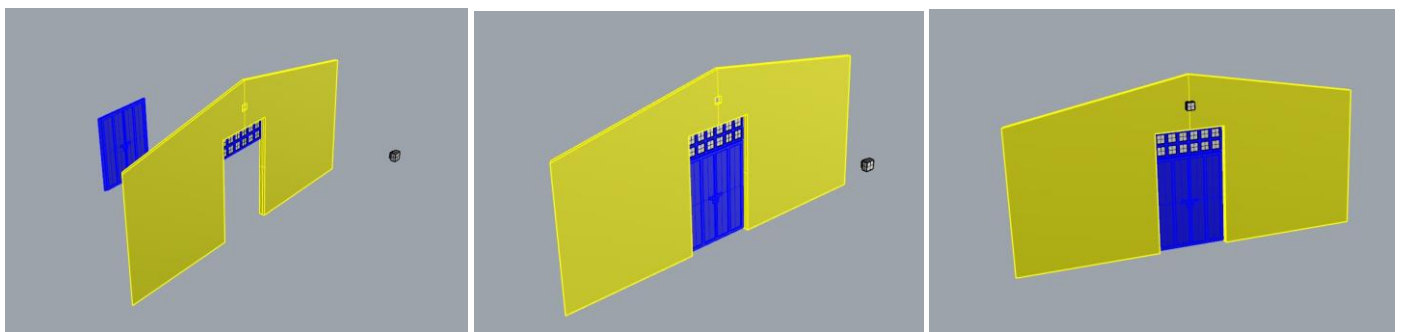
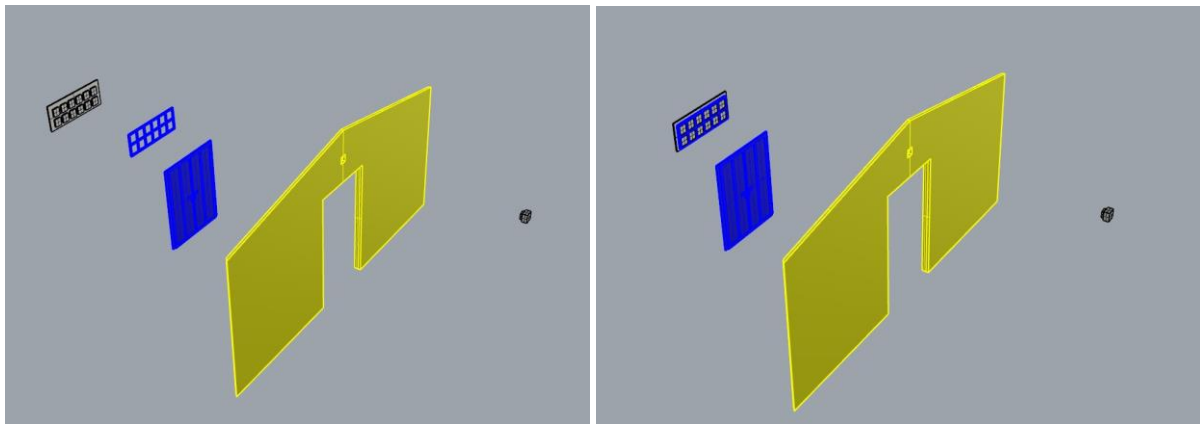




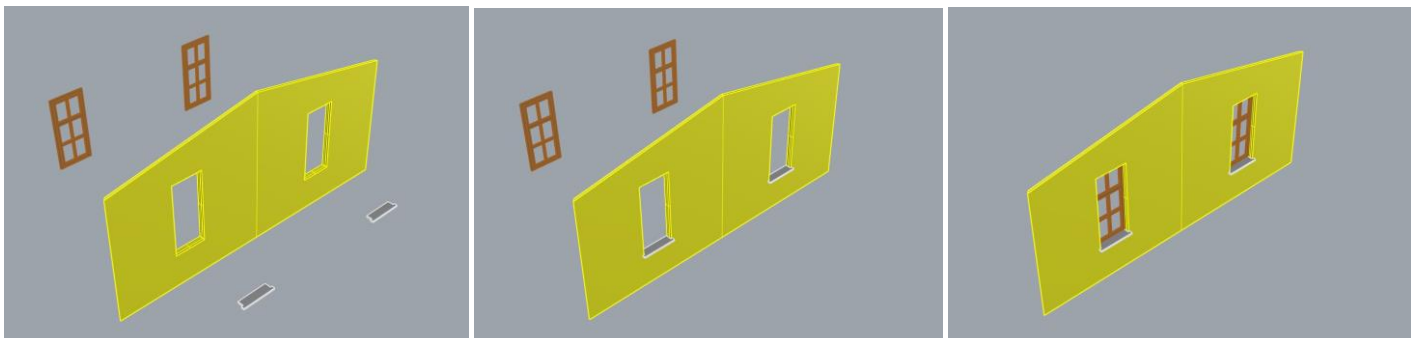
2. oldal:



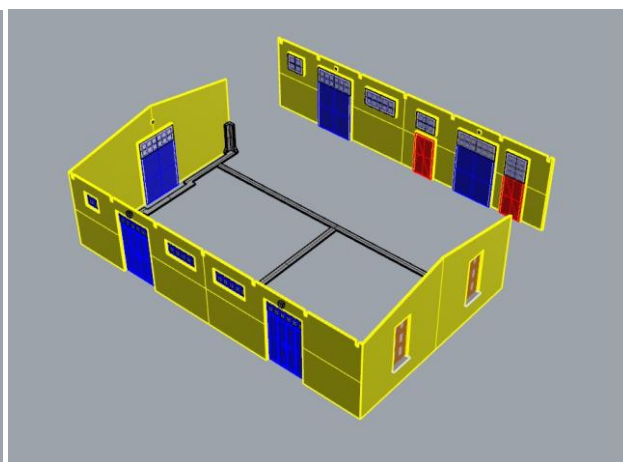
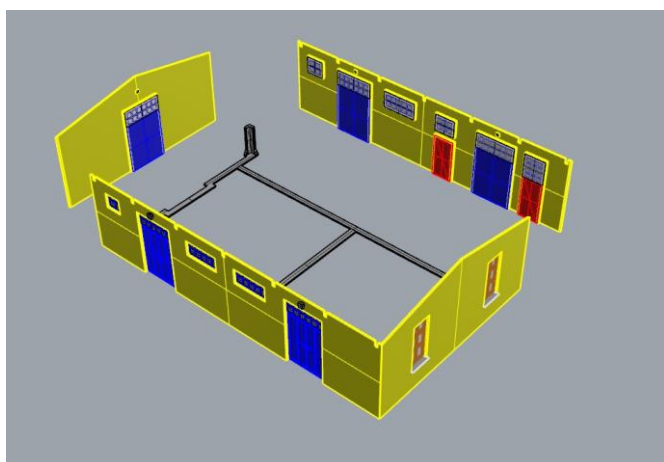
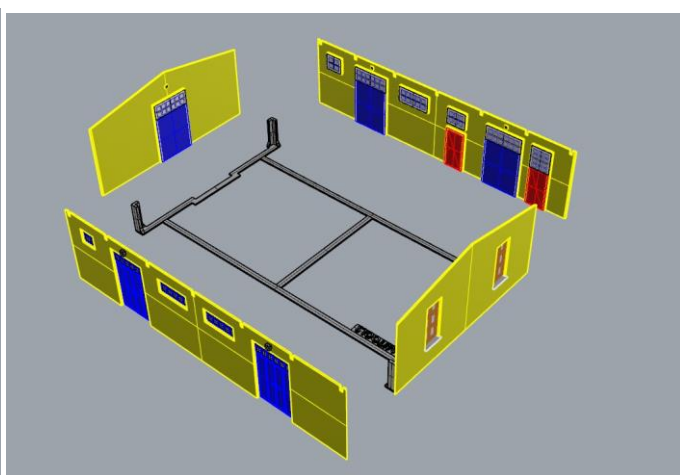
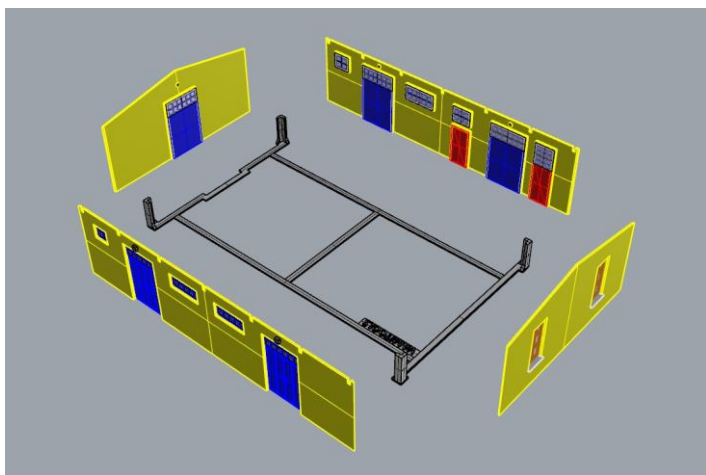
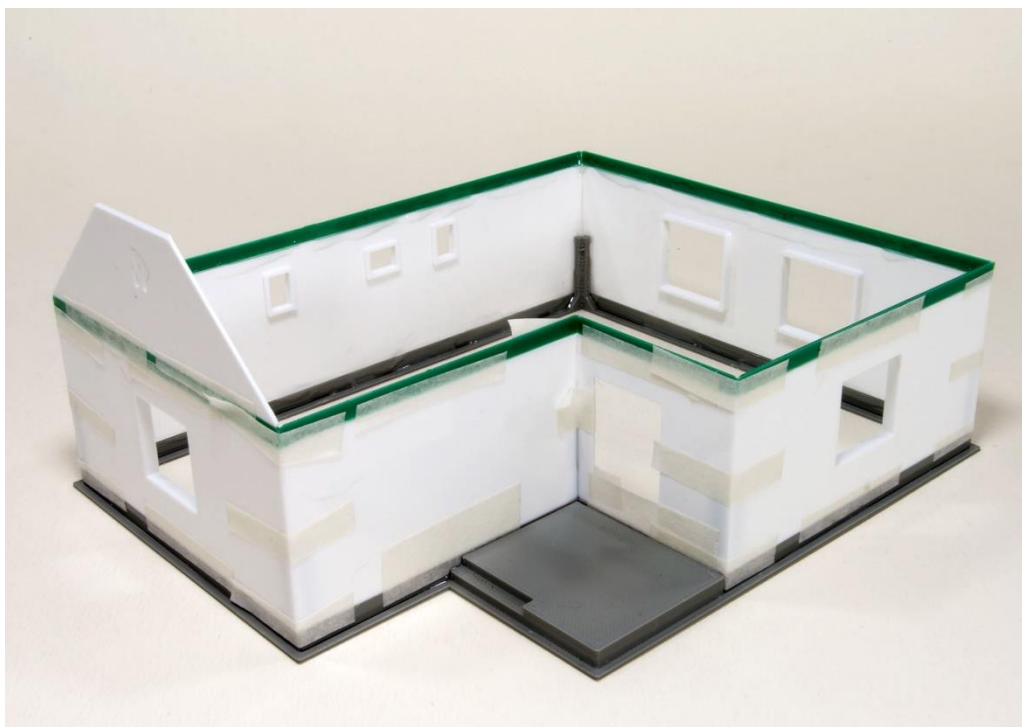
3. oldal:

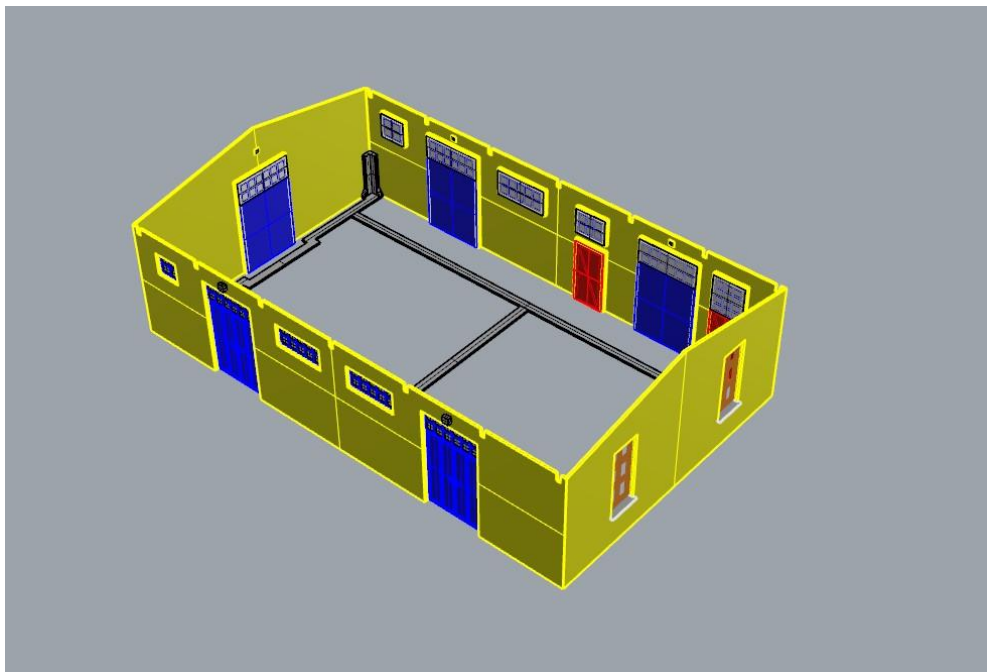


4. oldal:

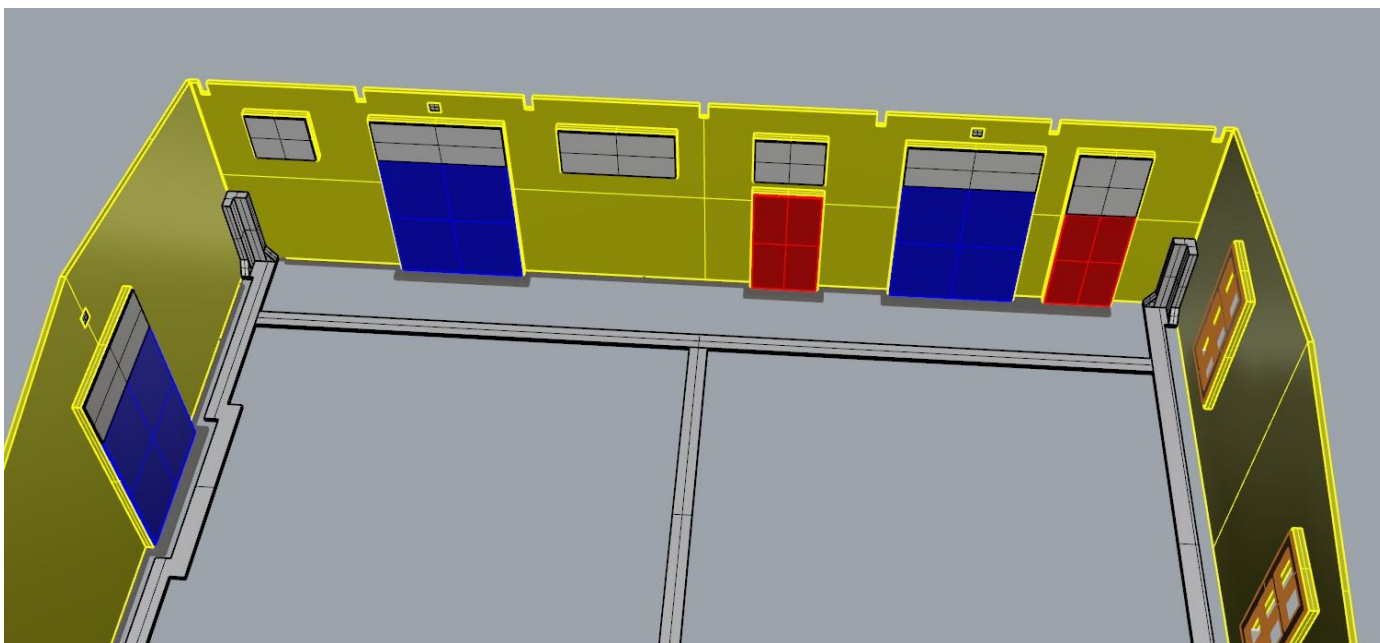
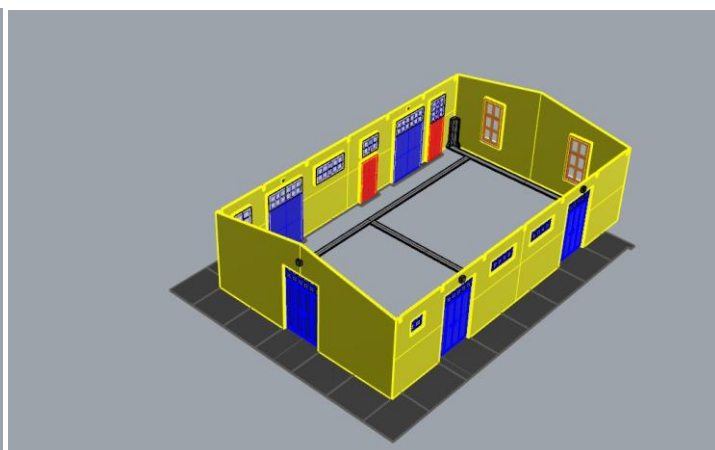
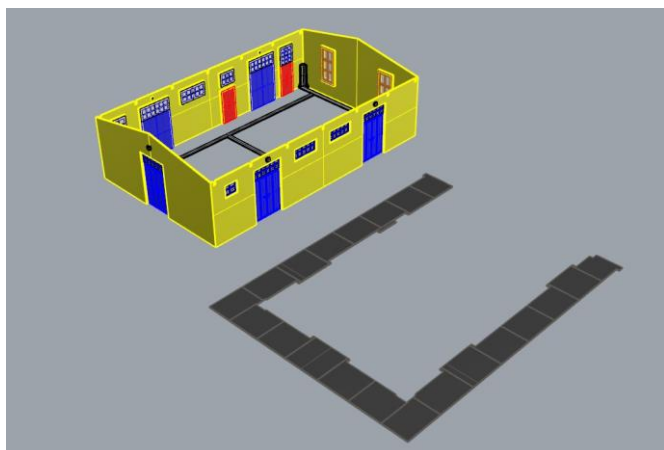


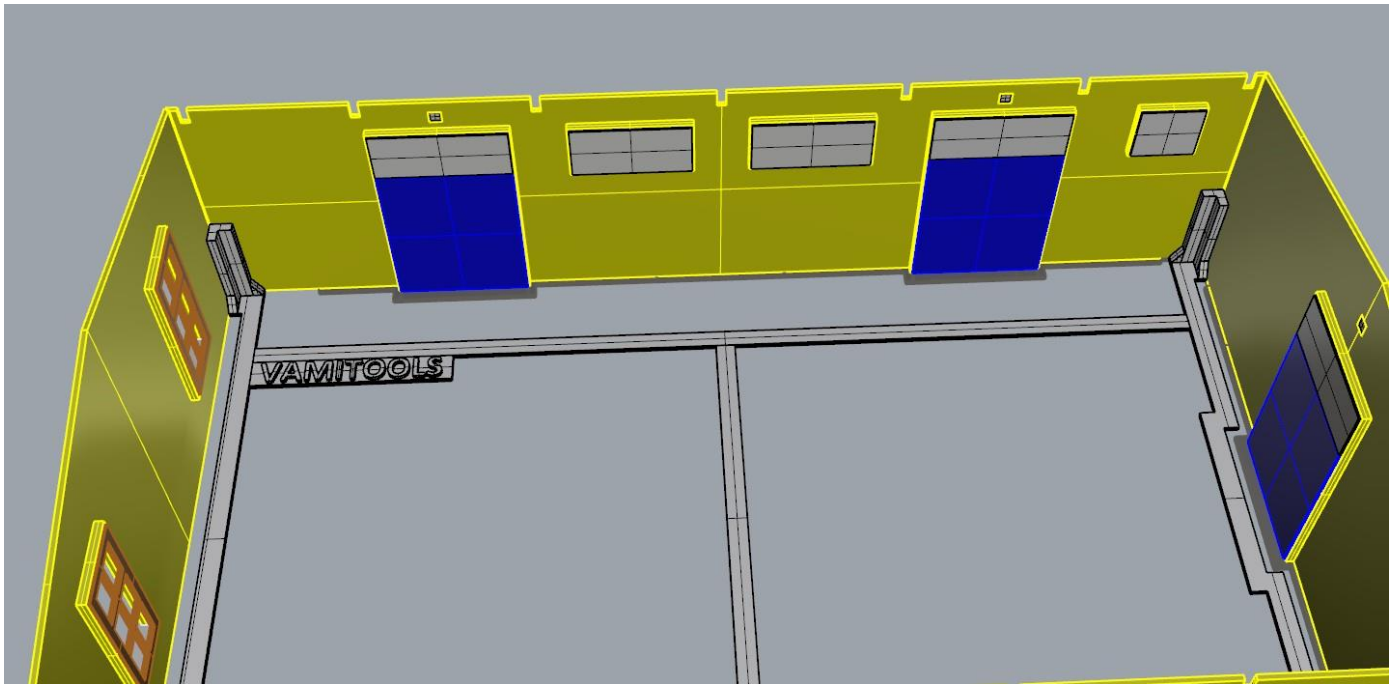
Ragasztási segédletként a falakat ragasszuk össze ideiglenesen az alábbi képen látható módon Scotch Magic vagy Krepp takarószalaggal, így a falak a későbbi ragasztás során nem fognak elmozdulni. Egy-egy saroknál akár több helyen is megragaszthatjuk a ragasztószalaggal, így még biztosabb tartást kapunk.



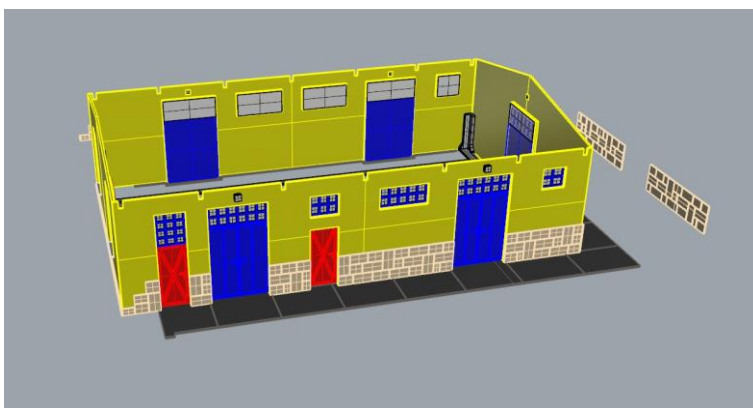
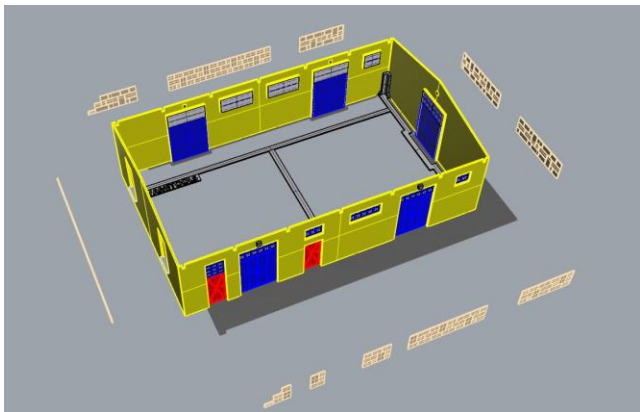


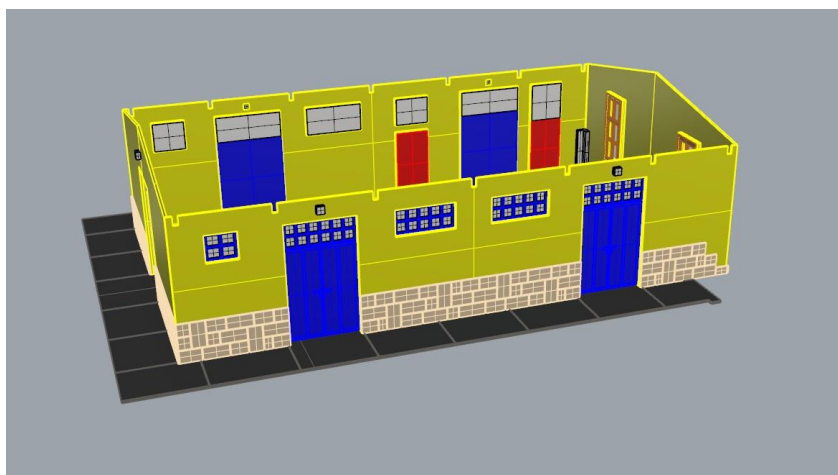
Tegyük a falak alá a betonozott részt.



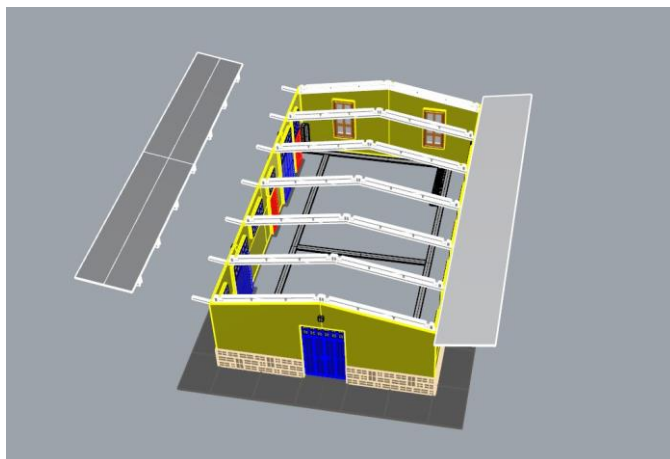
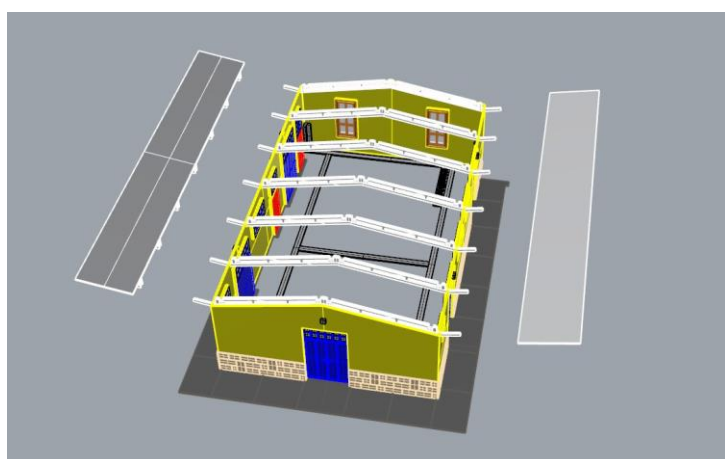
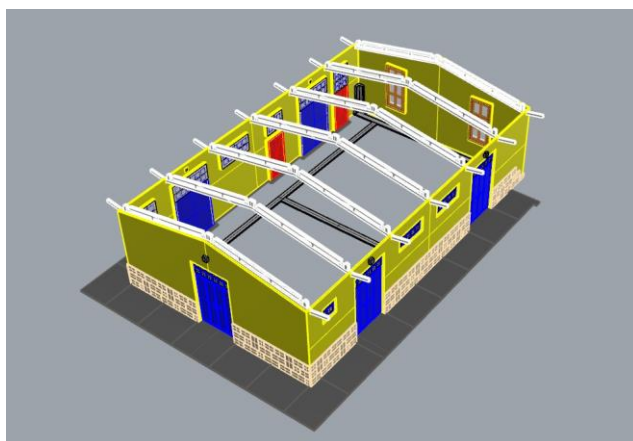
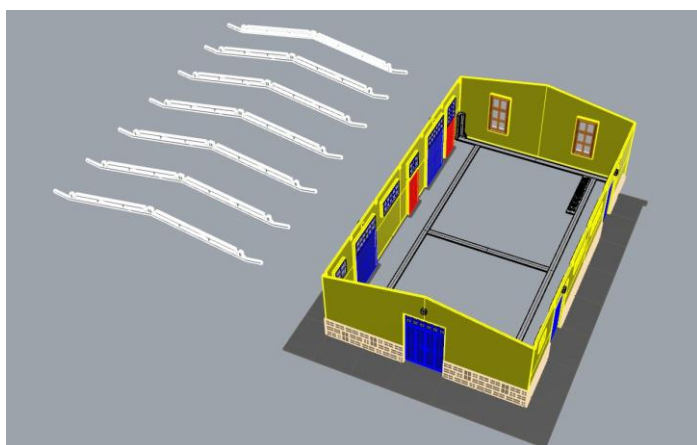


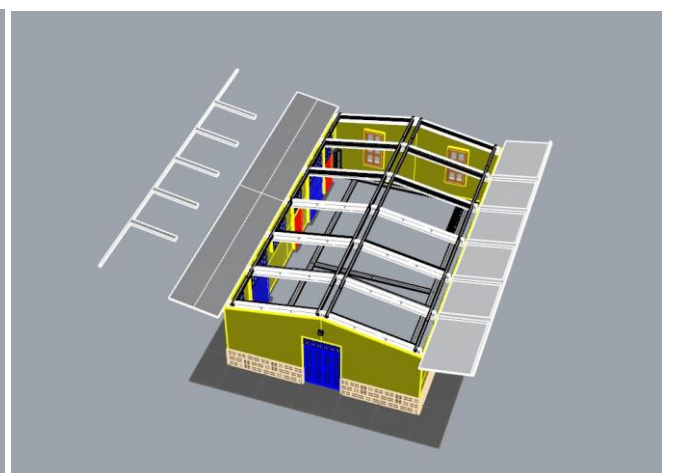
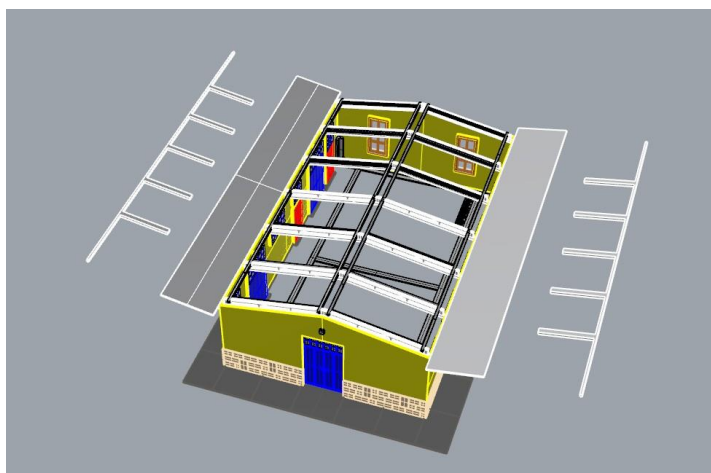
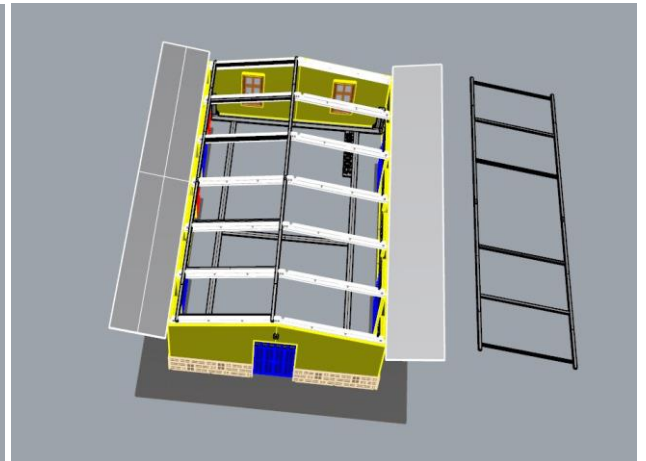
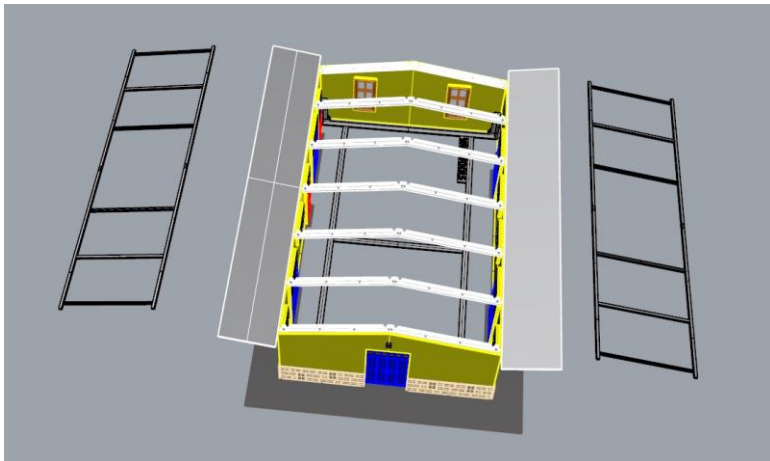
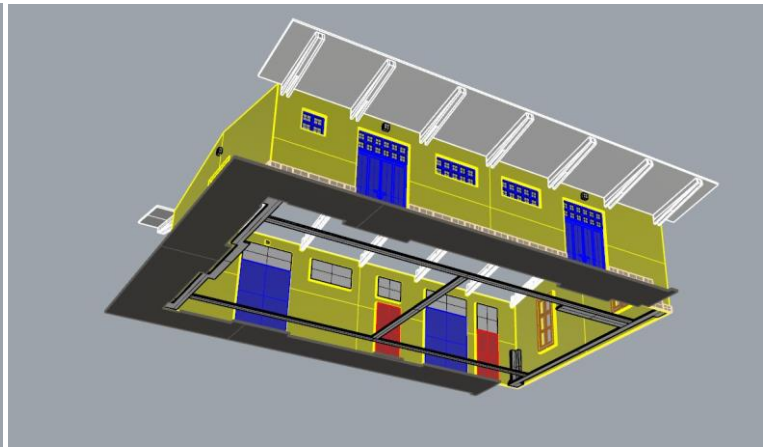
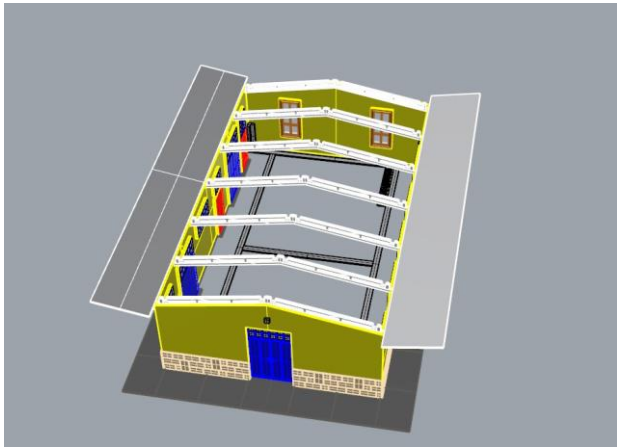
Rakjuk fel az épület ezen falaira a díszkövezést.



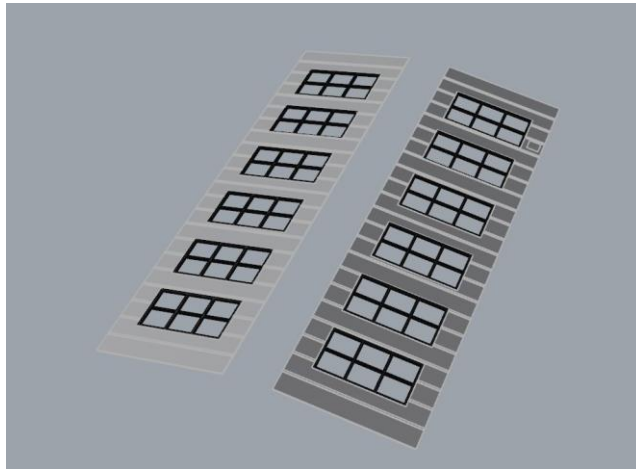
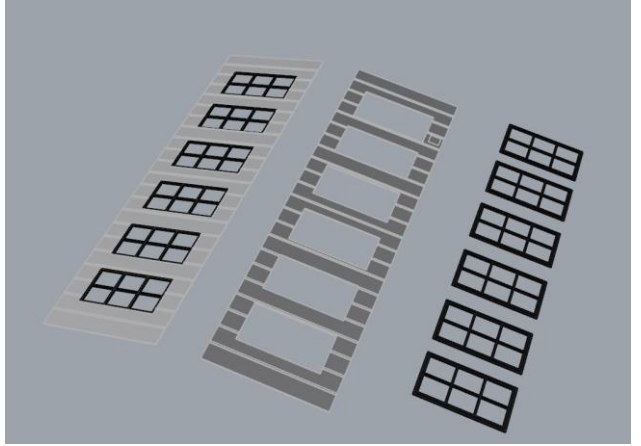
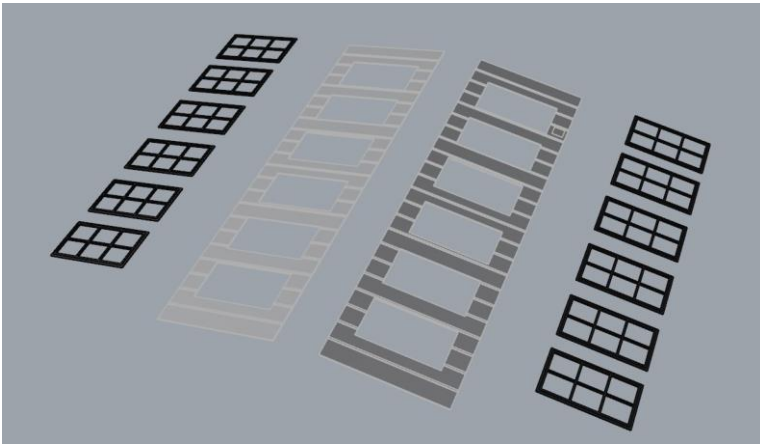
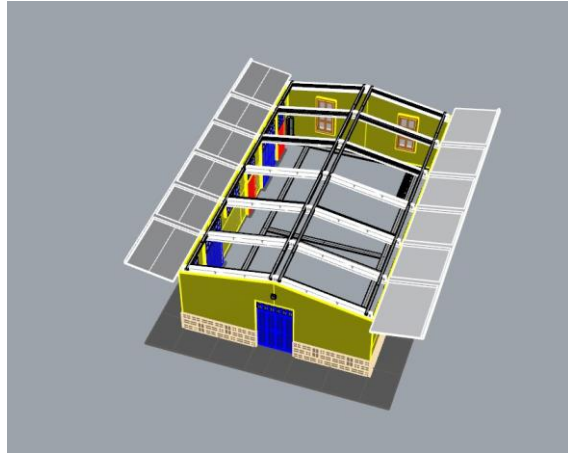


Folytassuk a tetővel.

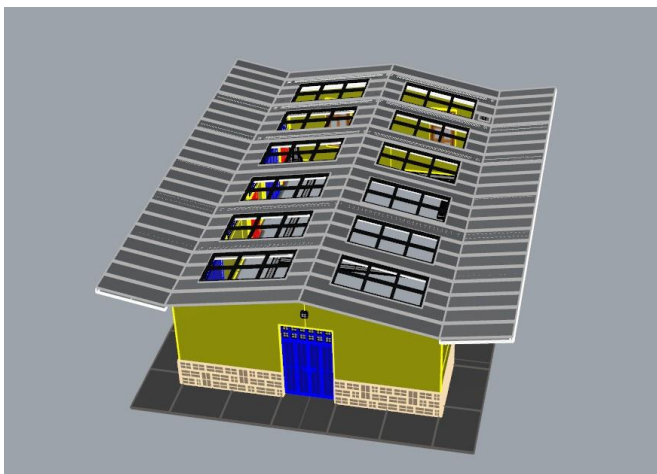
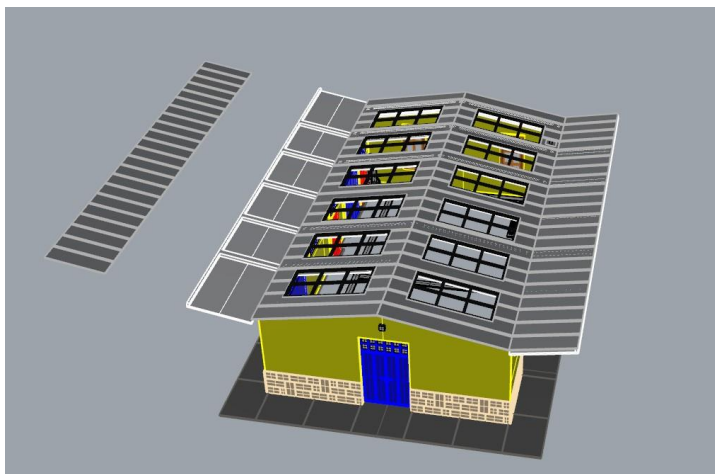
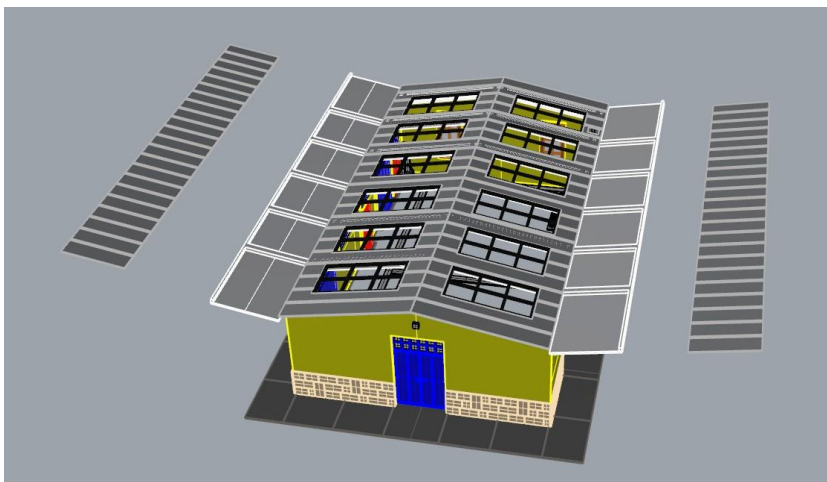
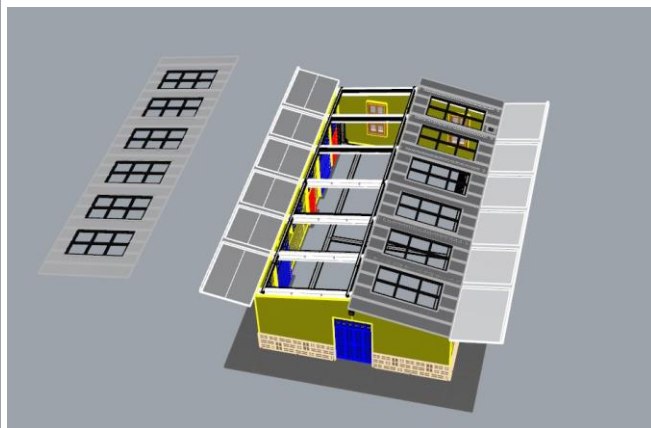
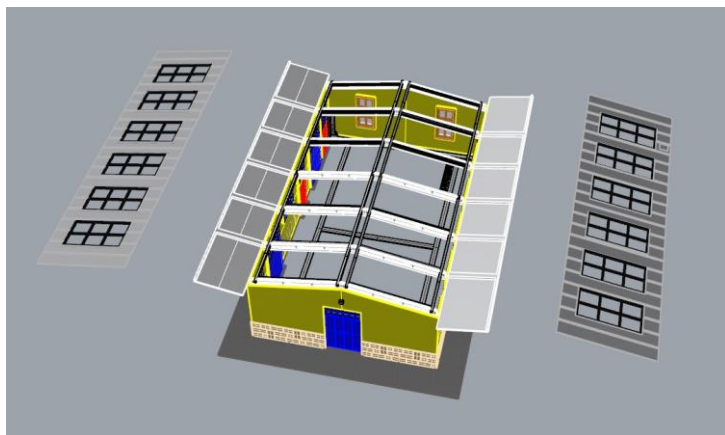




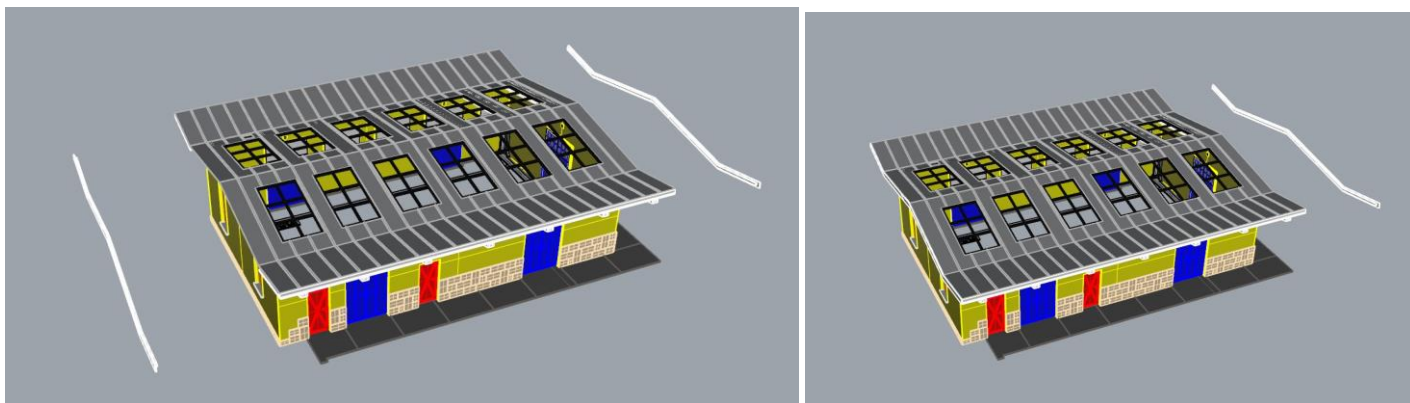




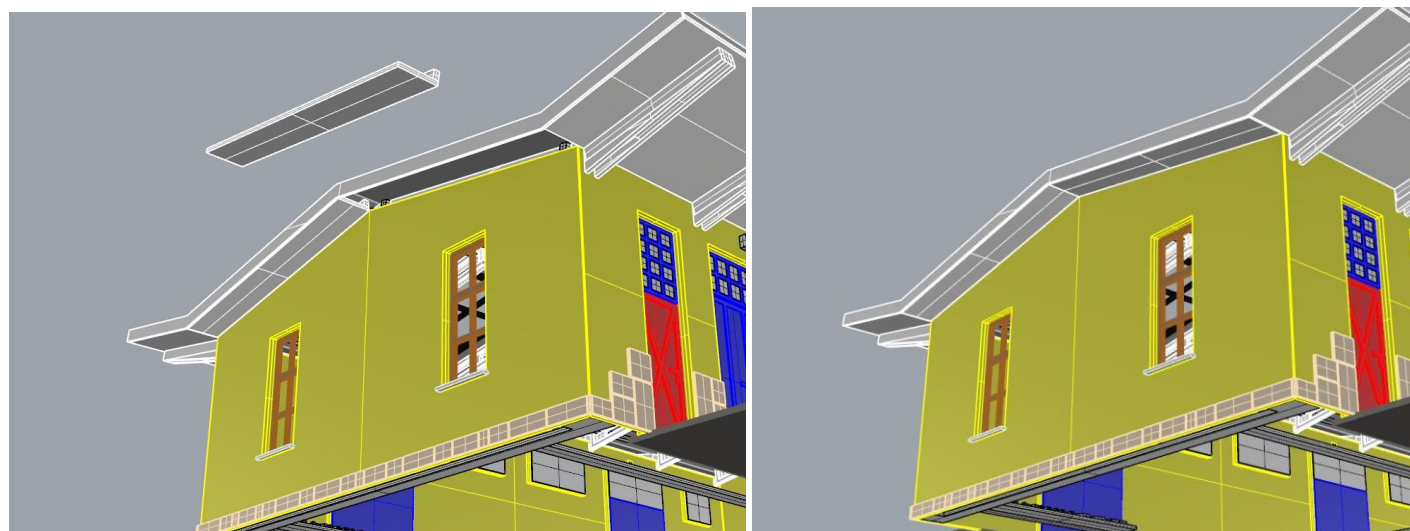
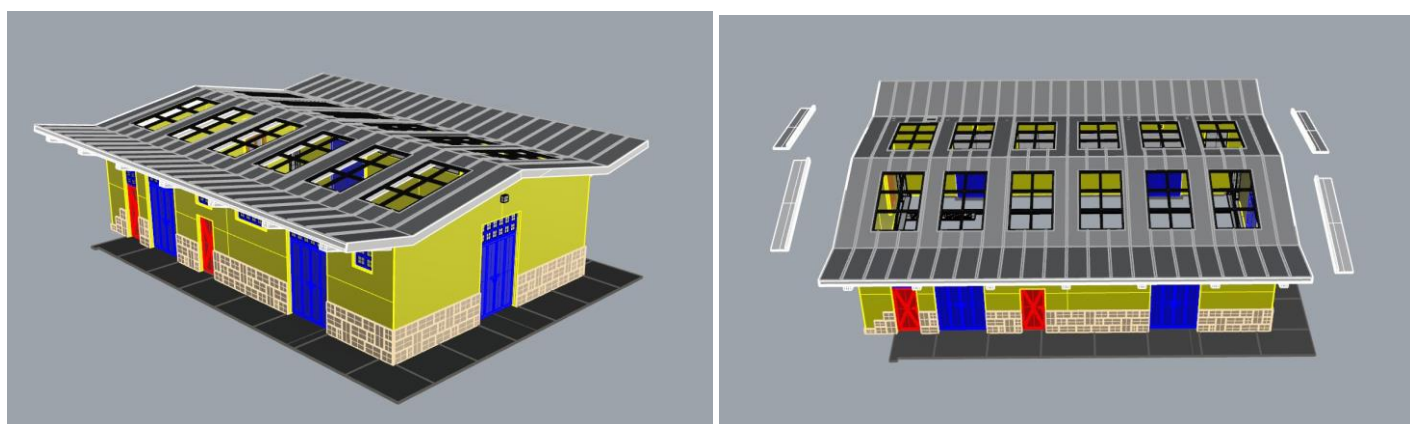
Az egyik ablakos tetőrészen van a helye a kéménynek. Ezt az alább látható képen a jobb oldalra kell tenni és a kémény helye az épület hátsó része felőli oldalon legyen.

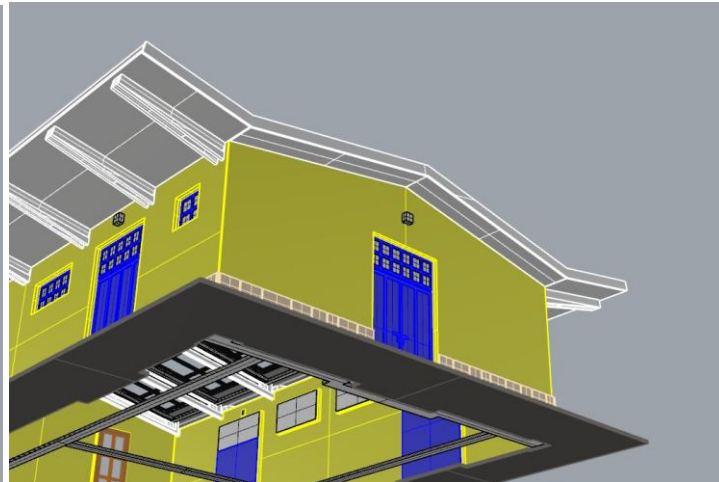


A tető két végére kerül egy-egy díszelem. A sima felük nézzen kifelé és a másik felükön levő kiugró résszel tegyük a helyére.

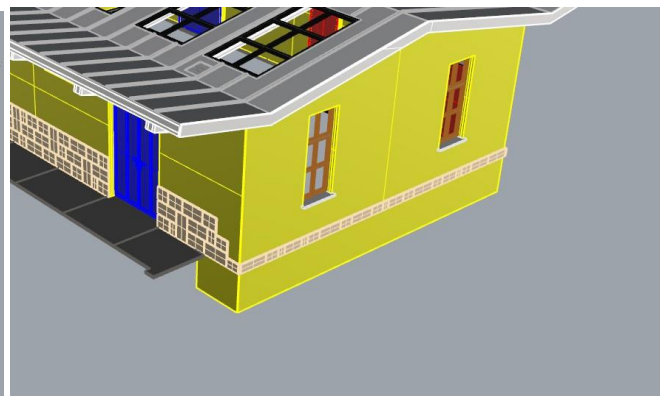
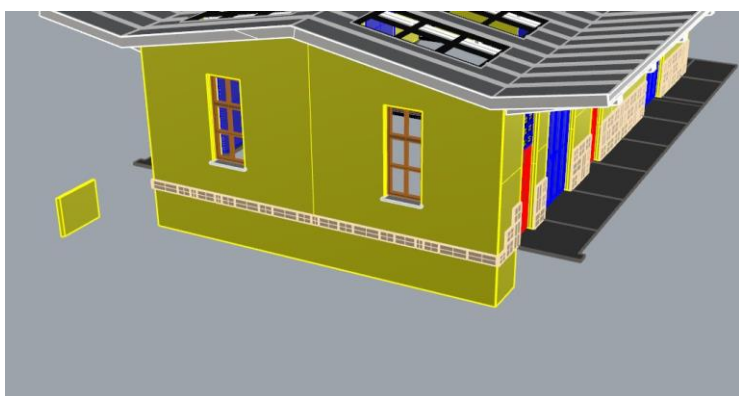
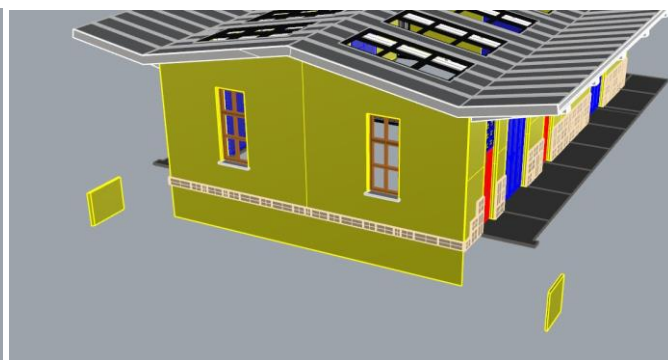


A tetőnél még pár alsó borítólemez hiányzik, ezeket is ragasszuk fel. Minden elem egyforma, így nem kell figyelni rá, hogy melyik hova kerül.

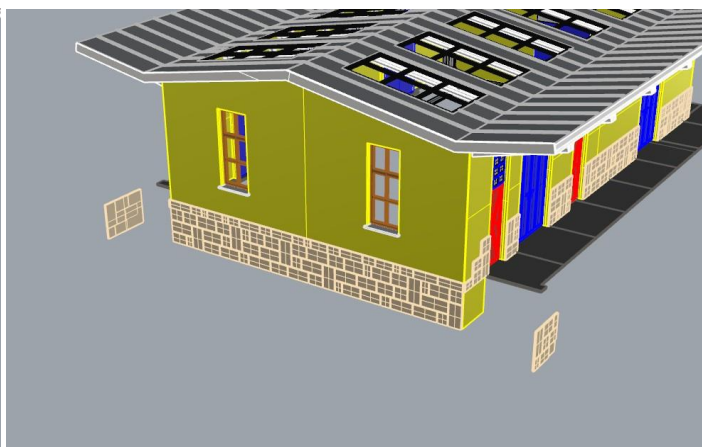
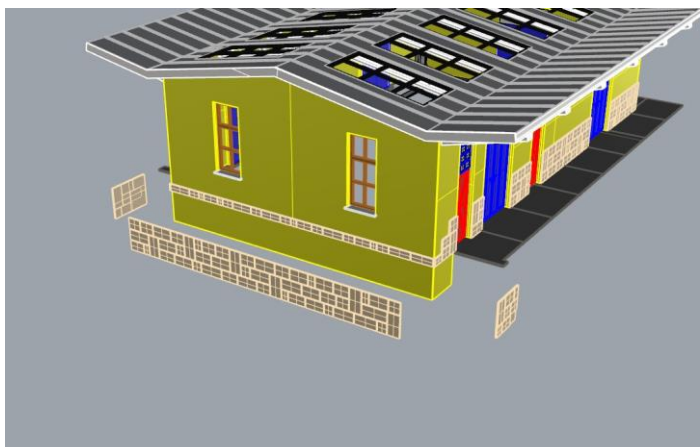


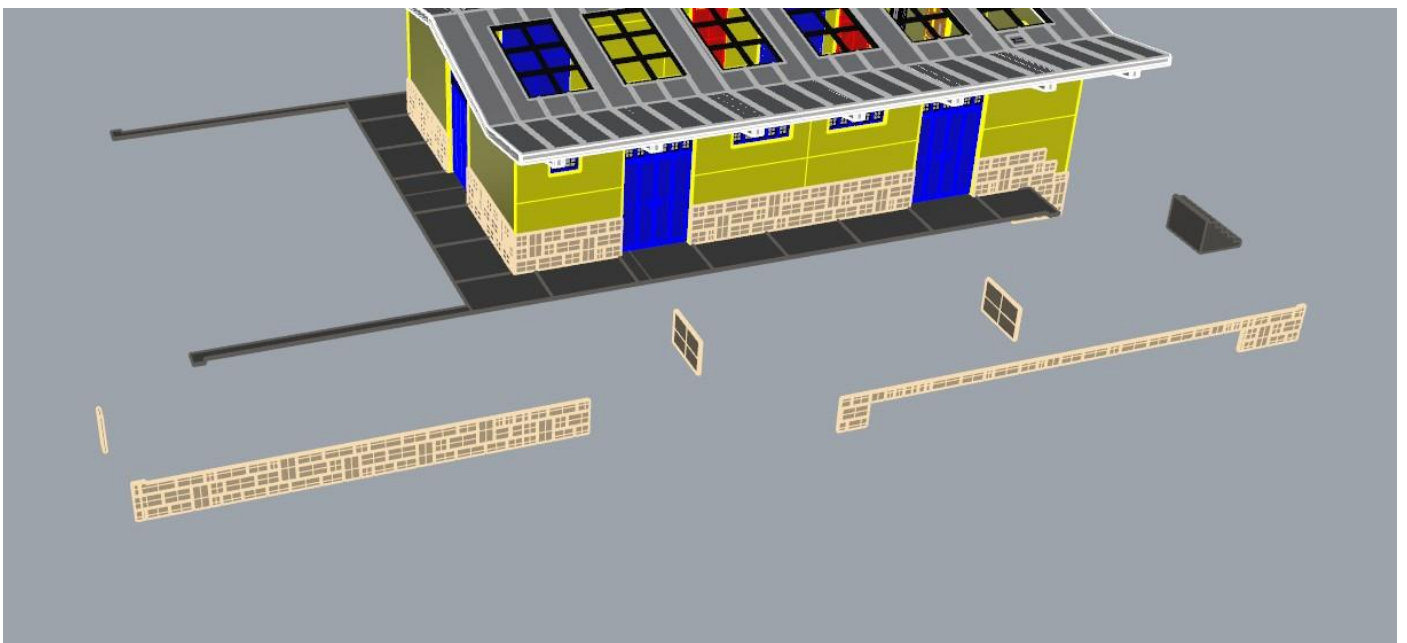
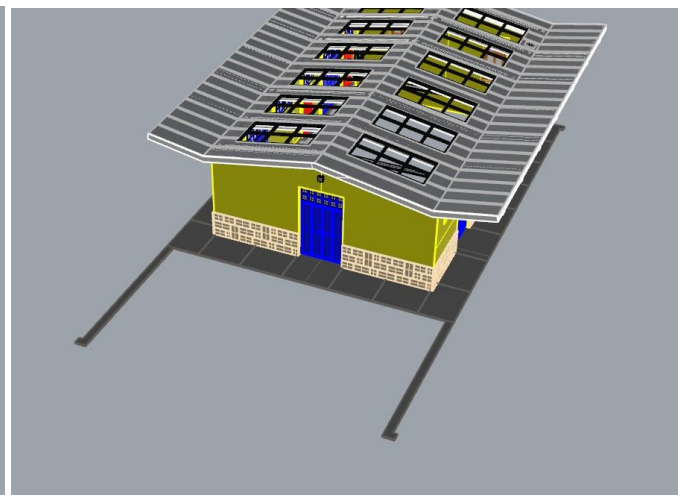
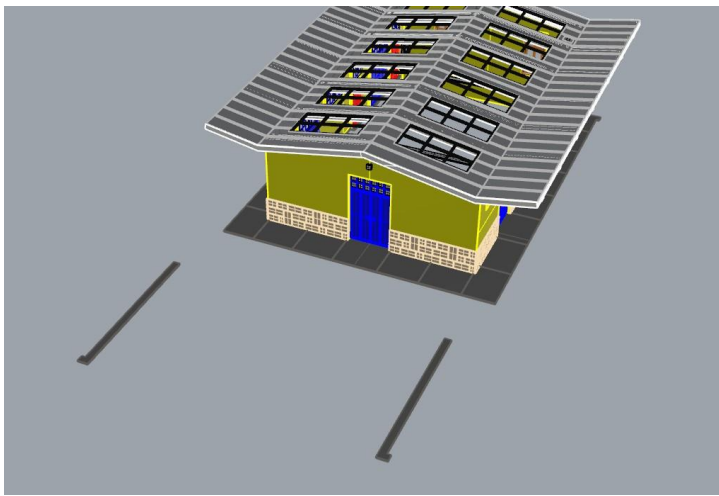
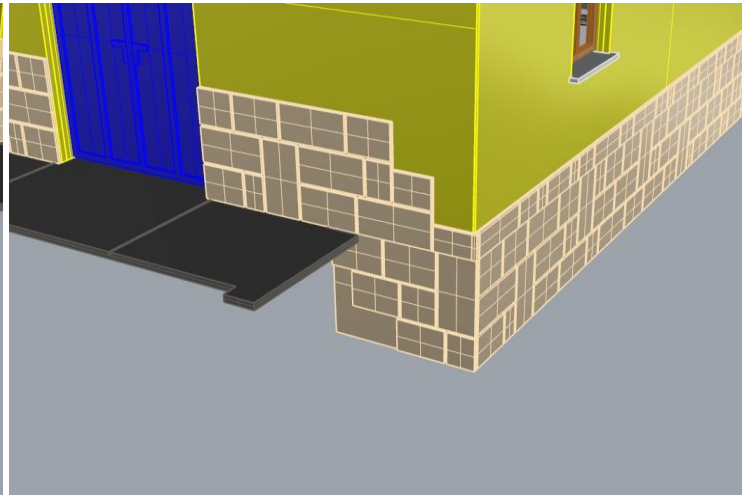
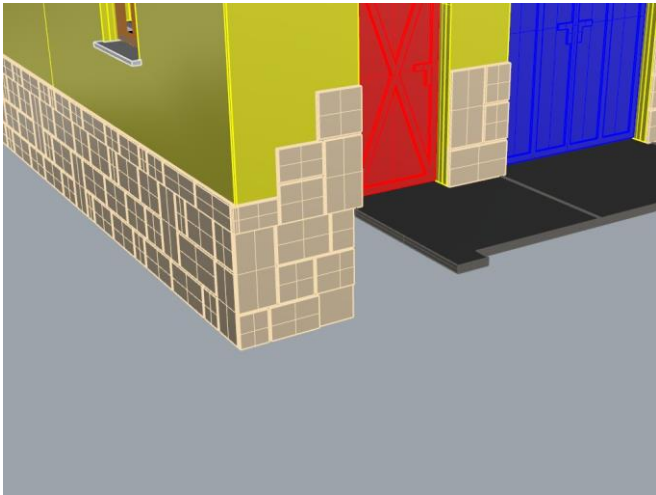


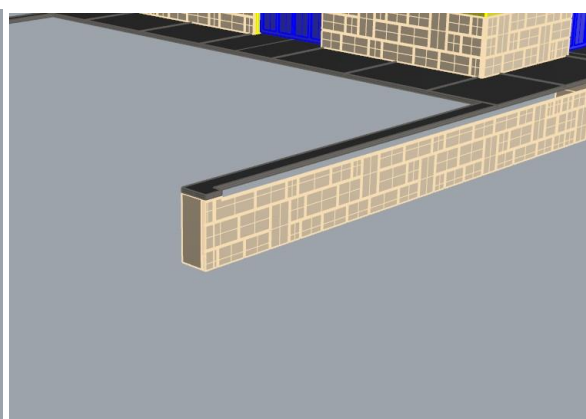
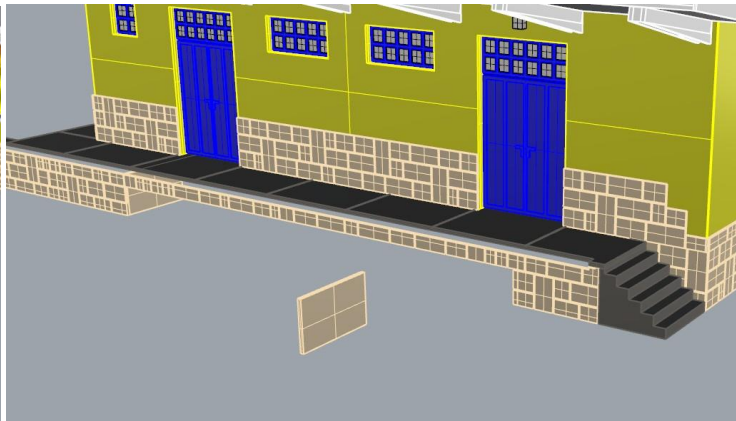
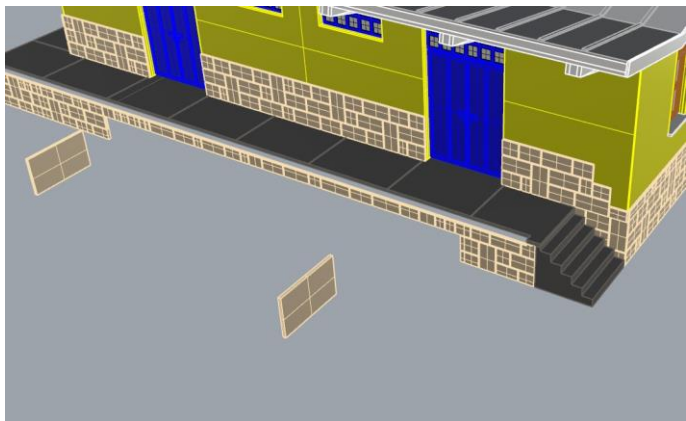
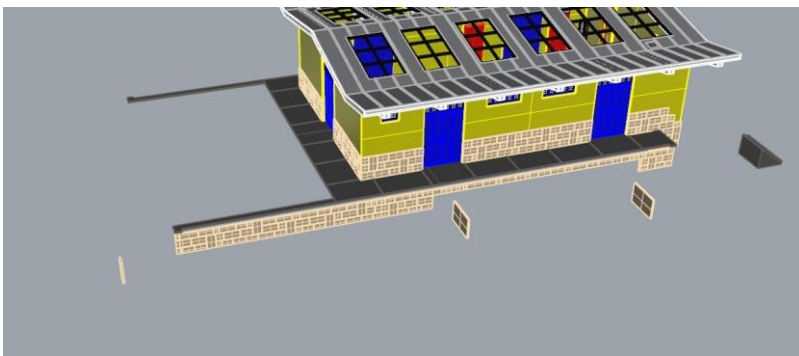
Folytassuk az épület aljával.



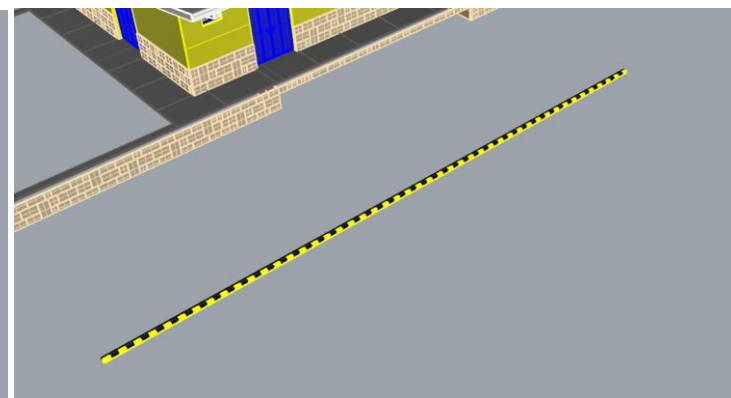
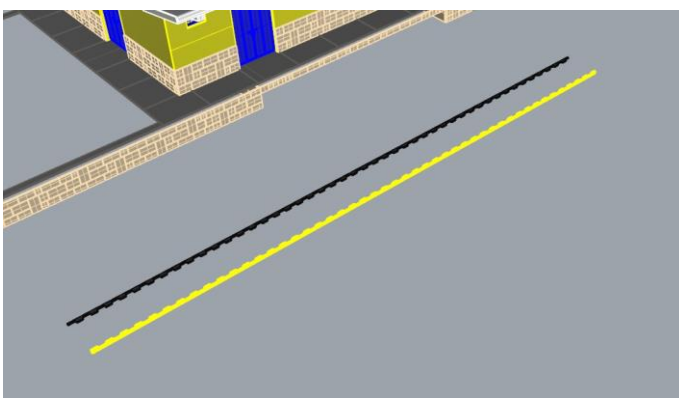
A kövezésnél figyeljünk a két kisebb elemre, mert nem mindegy, hogy melyik oldalra kerülnek. Nézzük a képeket, azok segítenek.

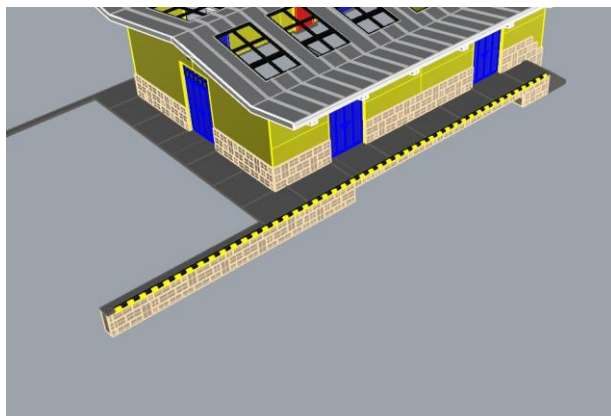




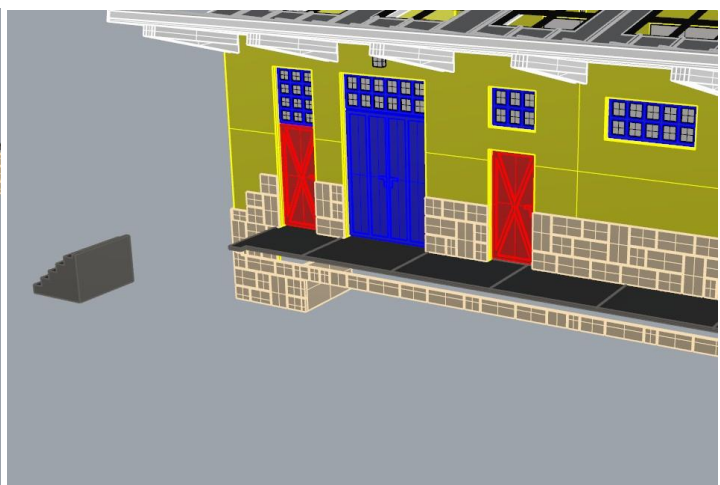
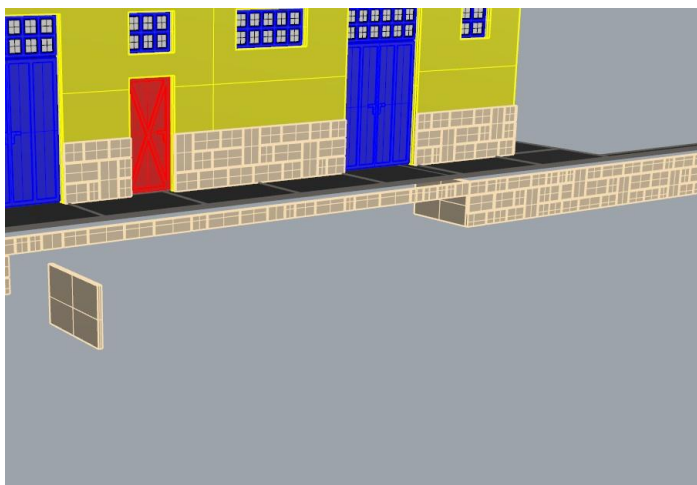
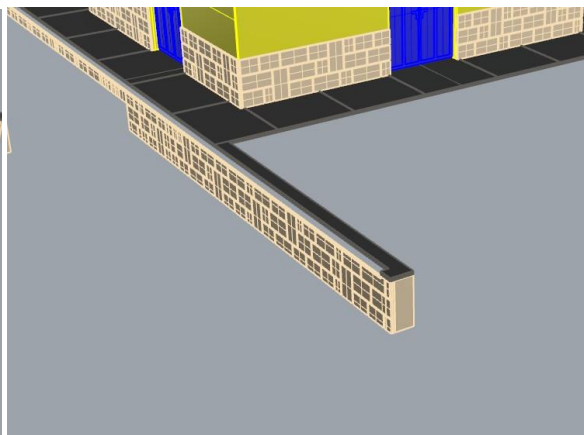
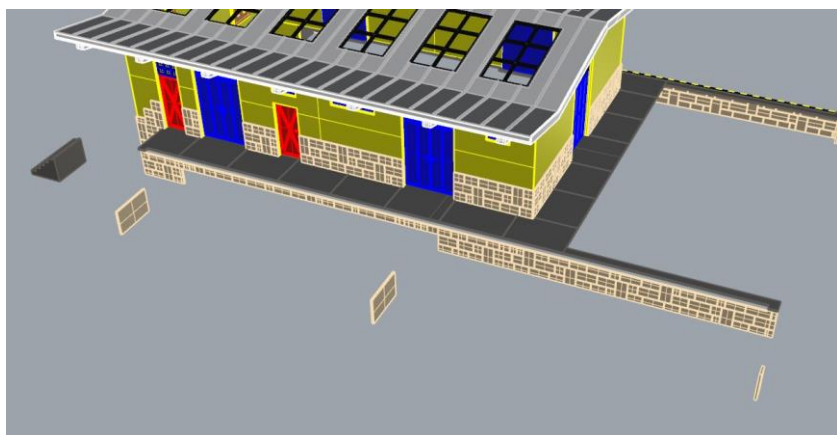
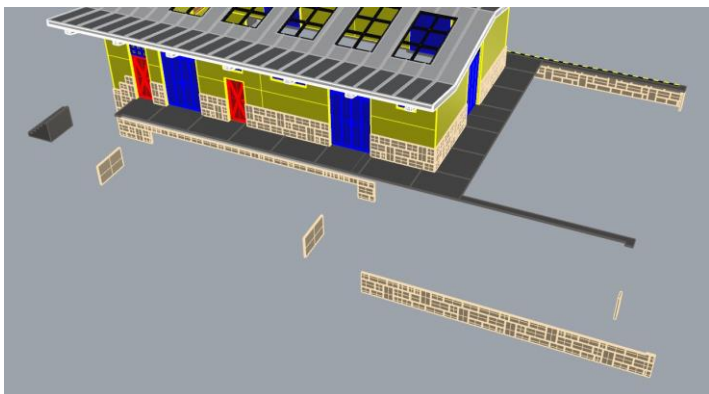
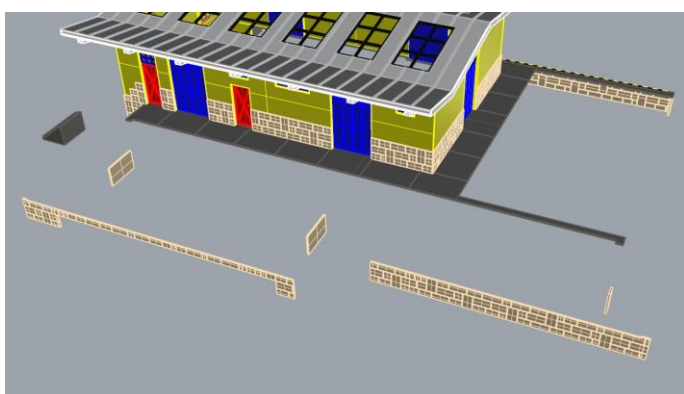


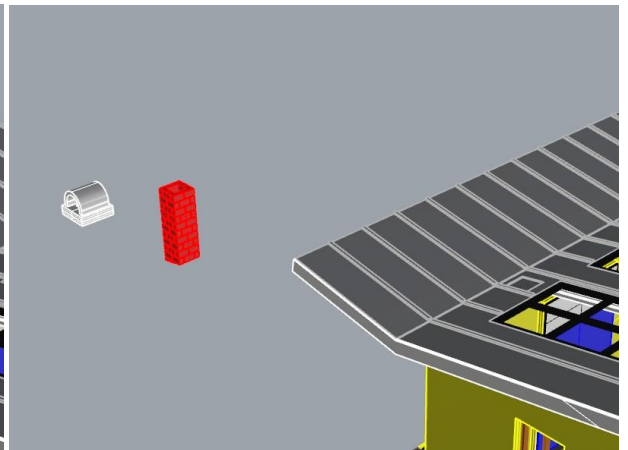
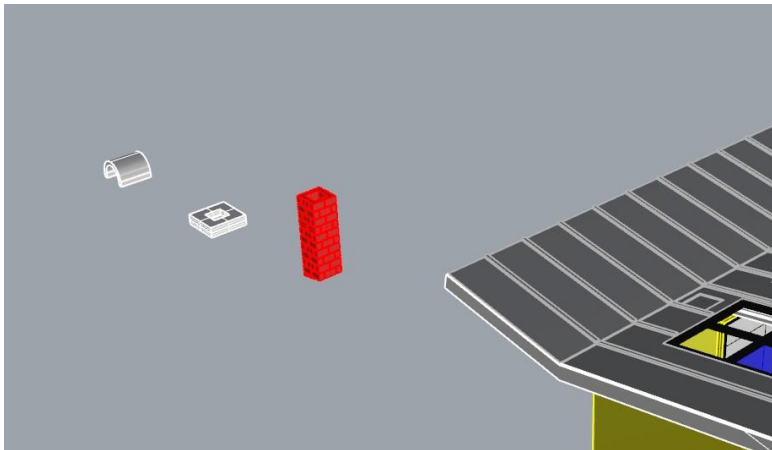
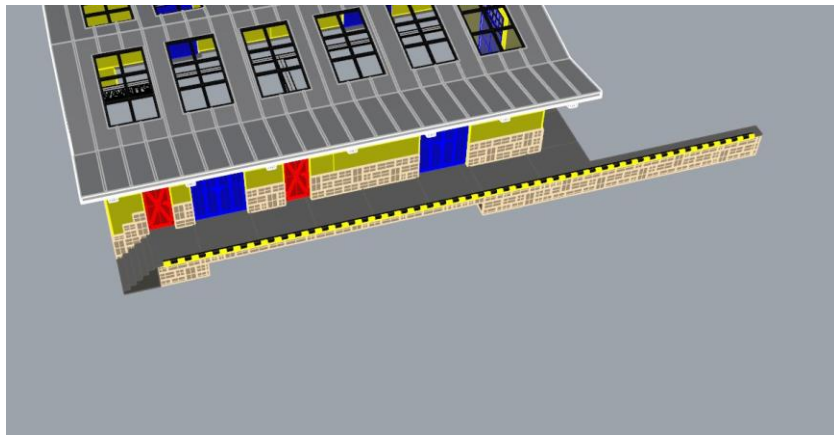
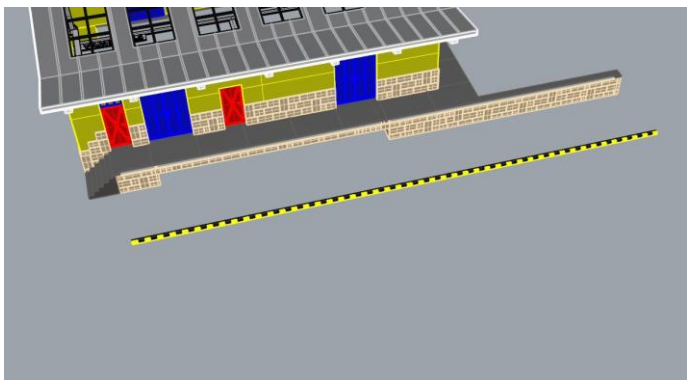
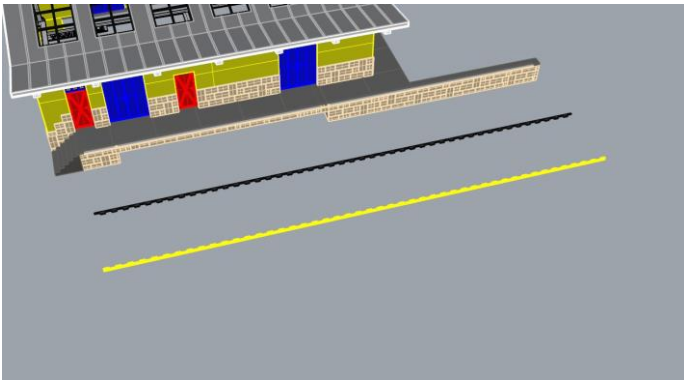
Folytassuk a csíkozással. Nézzük meg, hogy mekkora hosszúság passzol be a csíkozás helyére és arra a méretre vágjuk le a csíkozást.



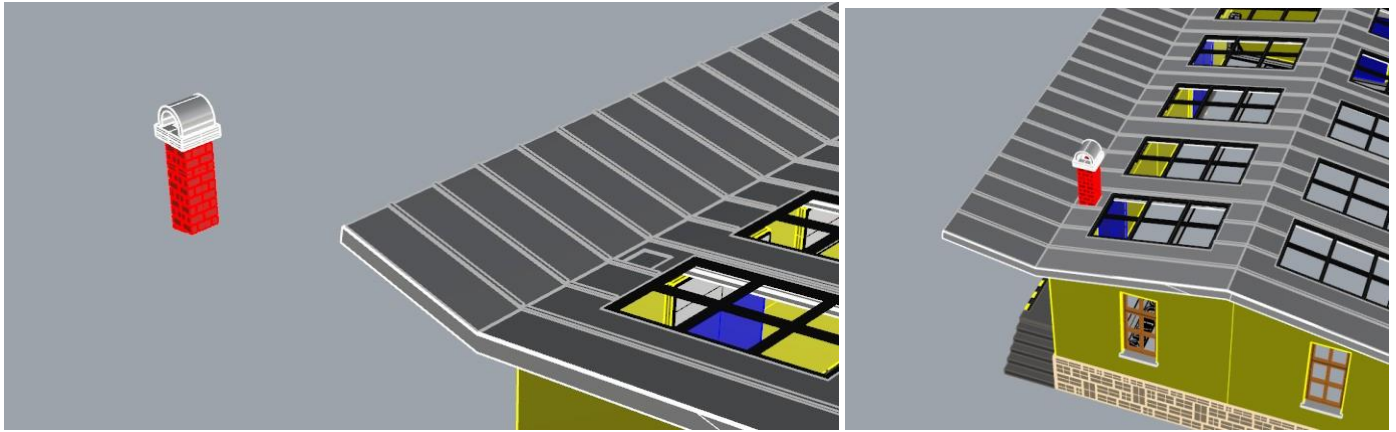


A másik oldal:

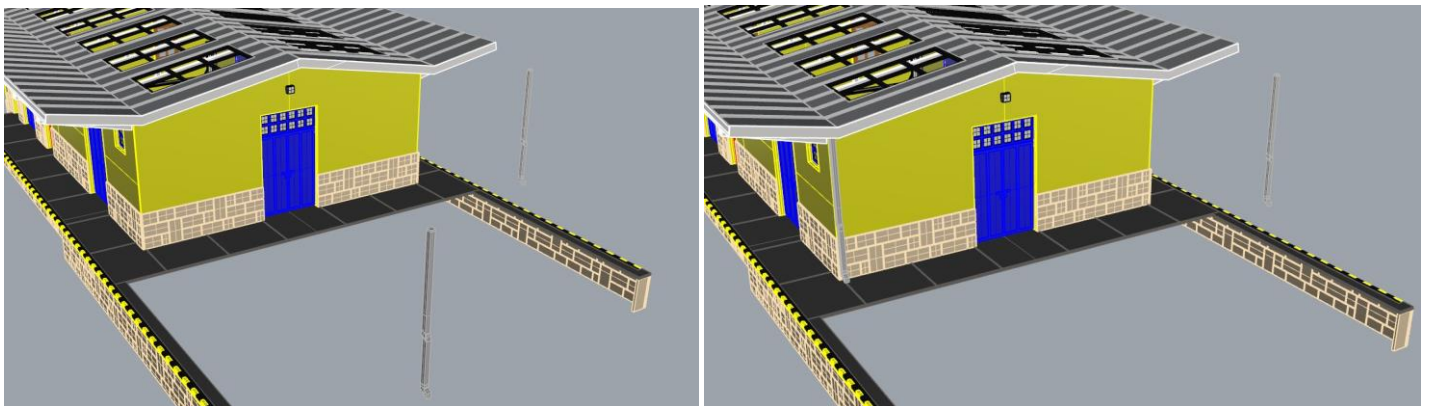
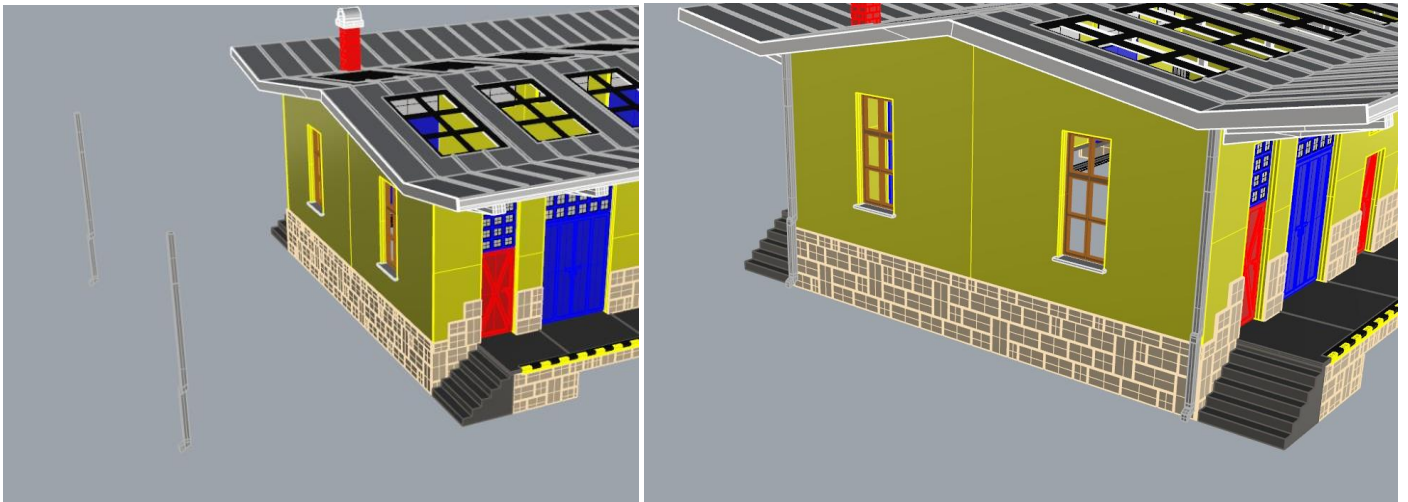








Jöhetnek az lefolyók.



Készen is vagyunk.

