

# VAMITOOLS Vasúti raktárépület – 508-as típus

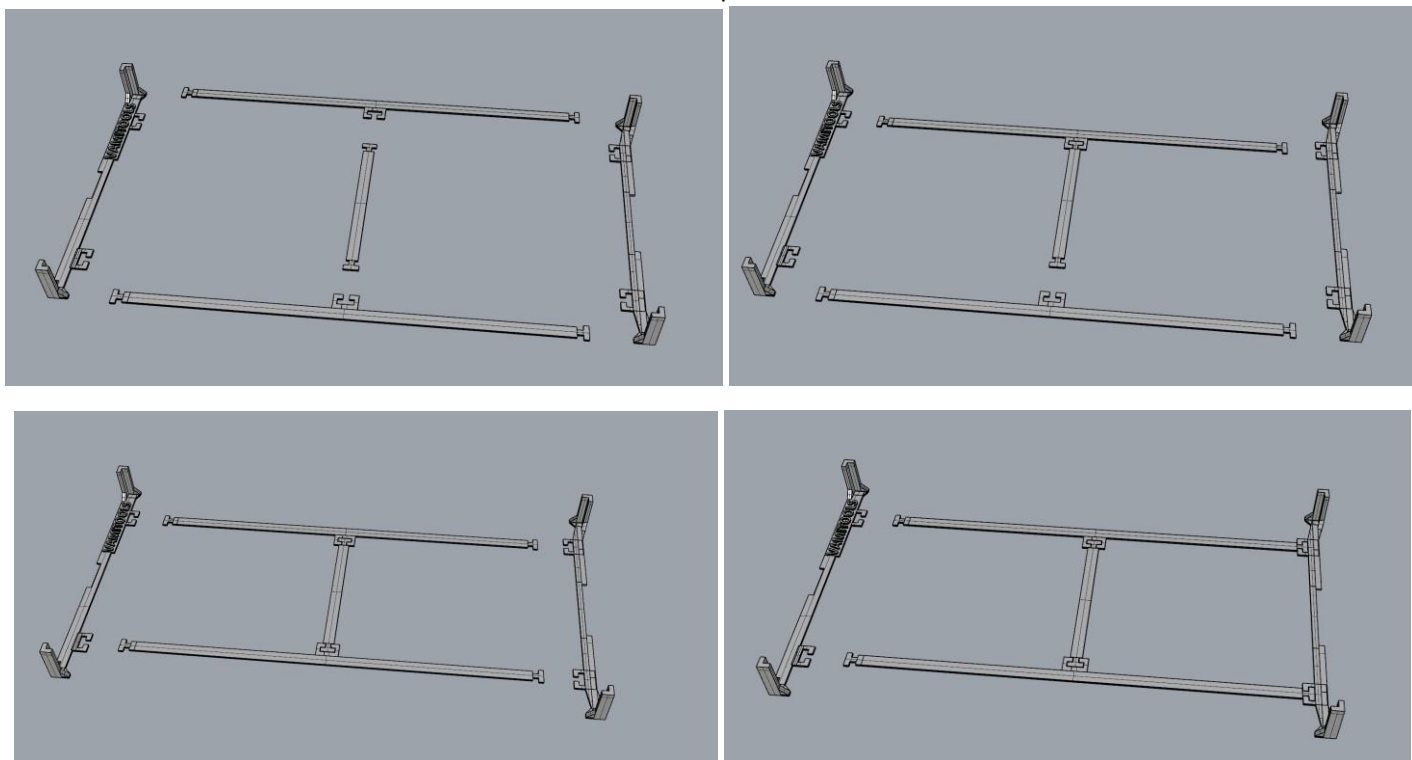
2023.04.22. előtt vásárolt termék

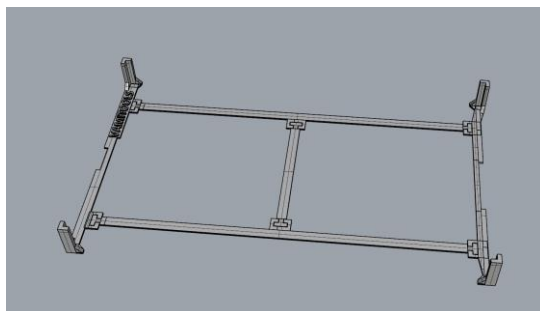


**Maketragasztót (Rewell stb.) NE használjanak termékeinkhez, mert az oldószere kárt tehet az egyes alkotóelemekben (főleg a vékonyakban)! A következő ragasztókat ajánljuk: kék tubusos Technokol Rapid (acetonmentes), kétkomponenses ragasztó (Epoxy Rapid, Araldite stb.). Bővebb információ a ragasztással, festéssel stb.-vel kapcsolatban a minden termék oldalán elérhető általános tájékoztatóban van!**

Az összerakást az oldalak külön-külön történő összerakásával kezdjük. Minden falrésznél a sima (fényes) oldal néz kifelé! Kövessük a képeken látható lépéseket. Célszerű az épület belső oldalára karton maszkolókat tenni, hogy a fény ne világítsa át az épület falait. A karton maszkolókat az útmutató külön nem jelzi!

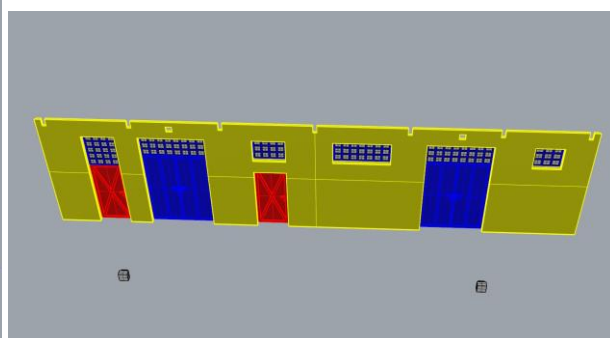
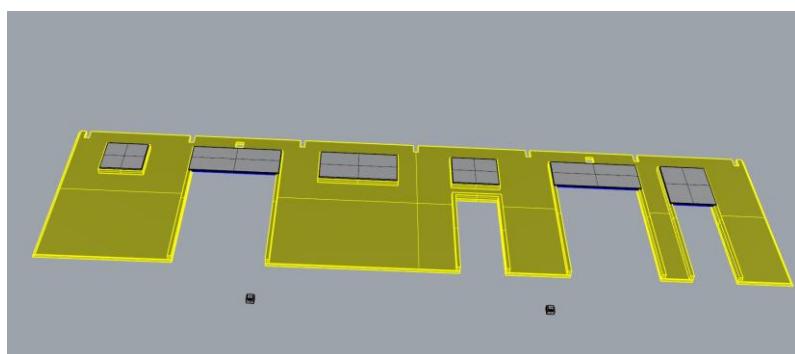
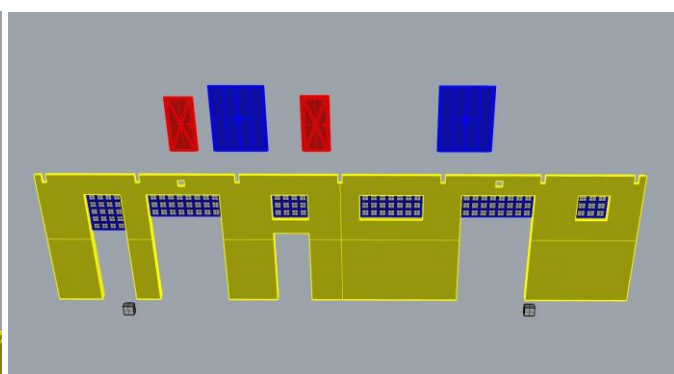
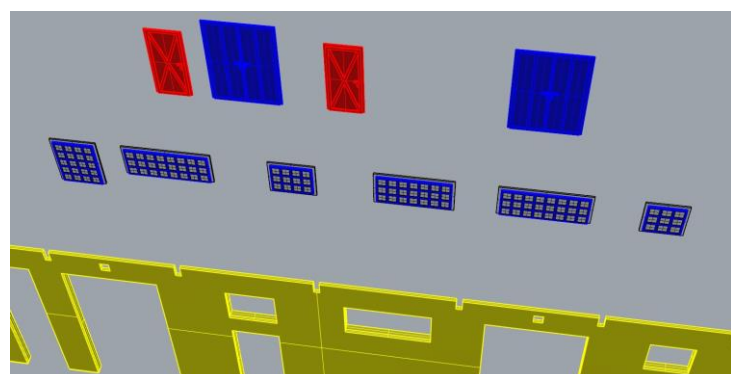
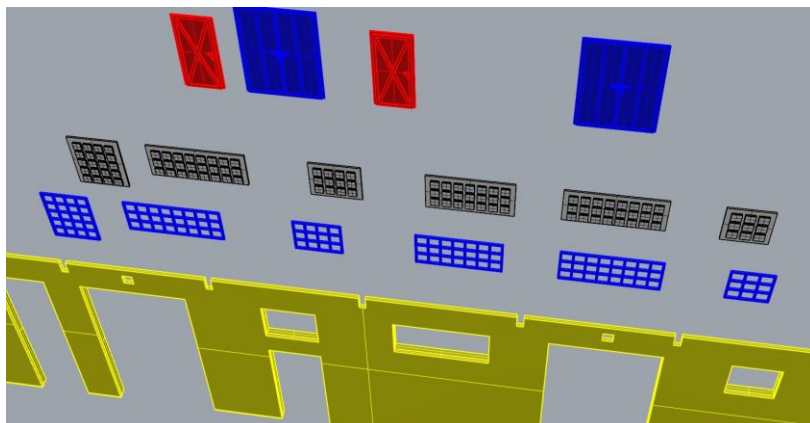
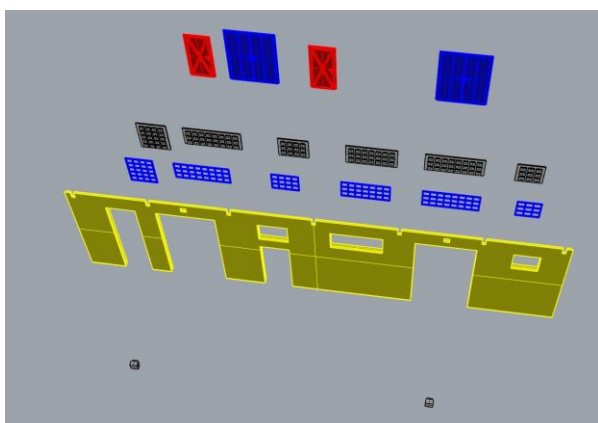
Alap:

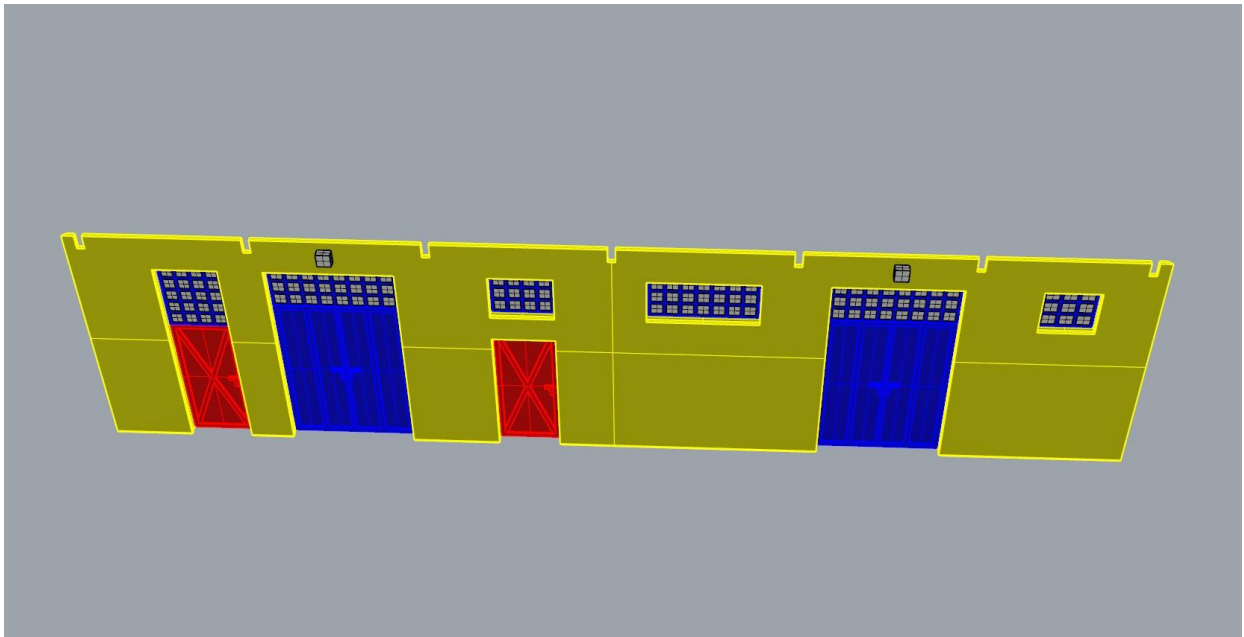




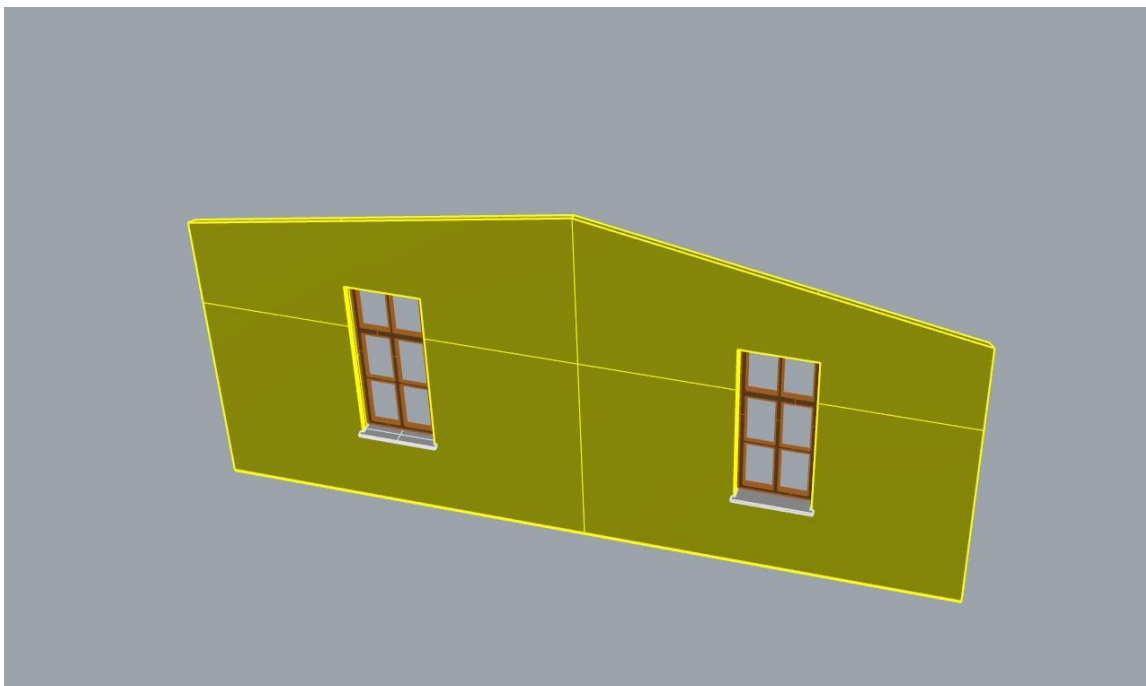
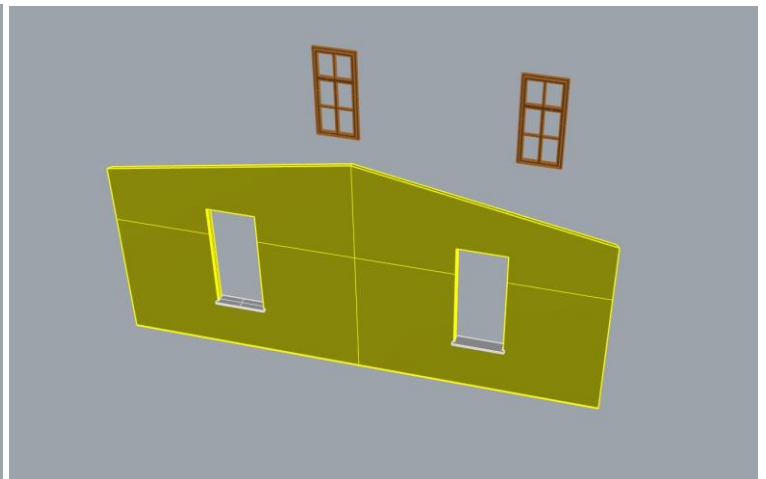
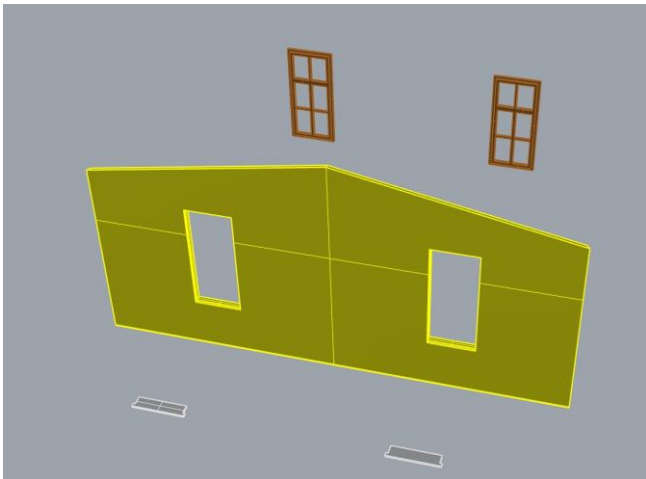
Az alapot a falaknál majd csak ragasztási segédnek használjuk, NE ragasszuk hozzá!

1. oldal:

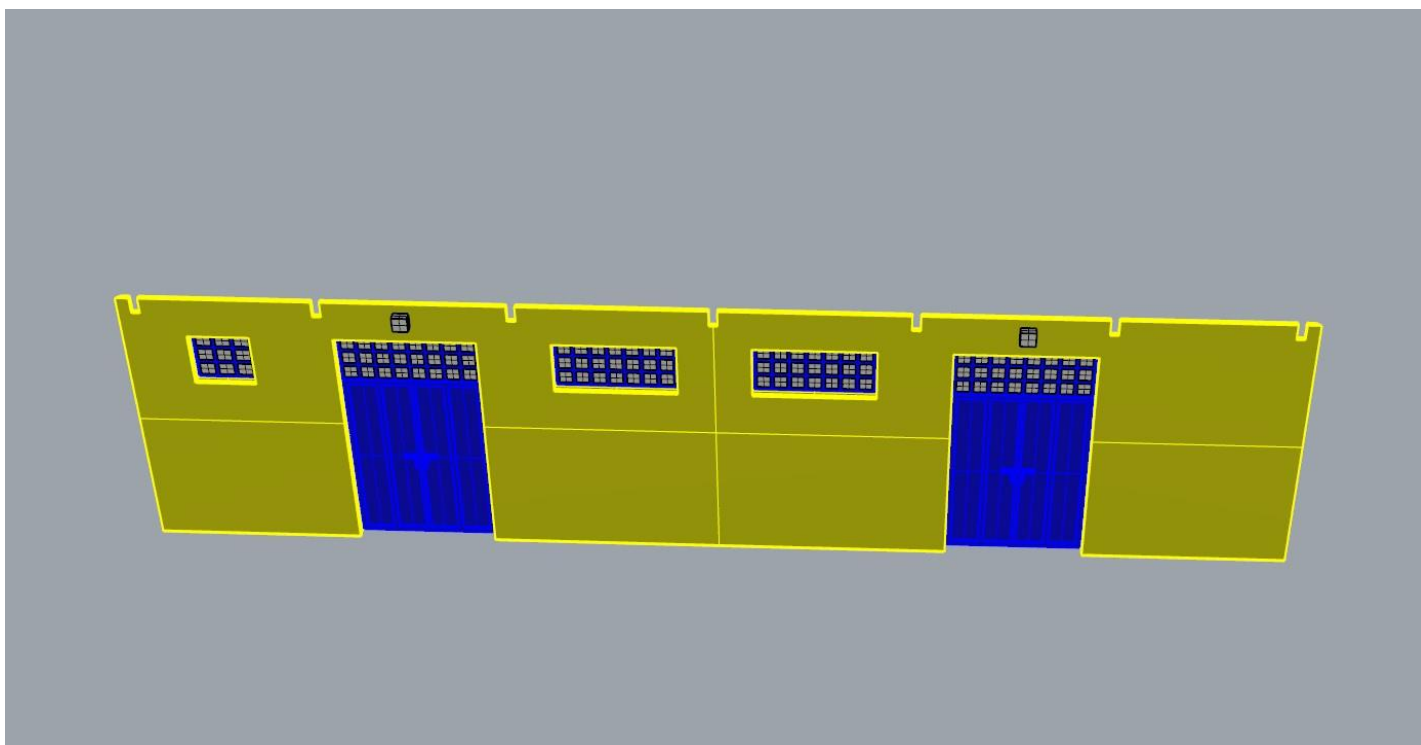
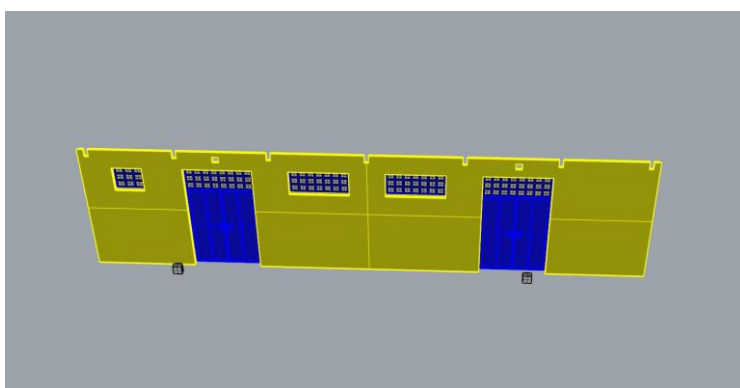
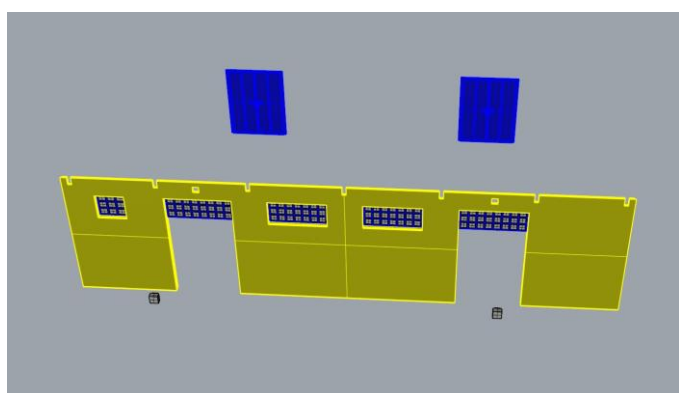
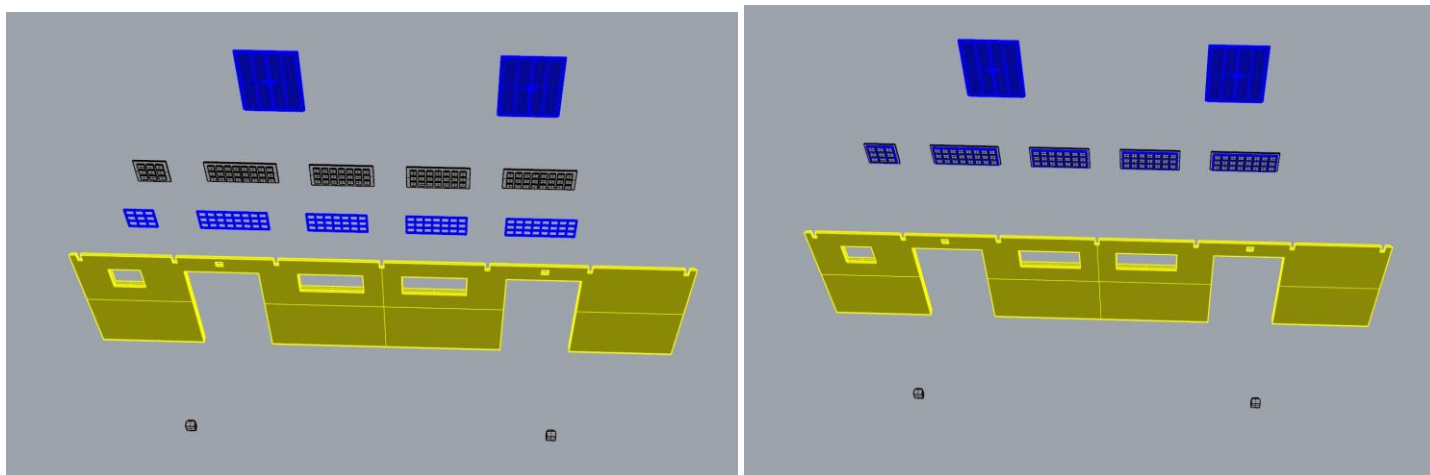




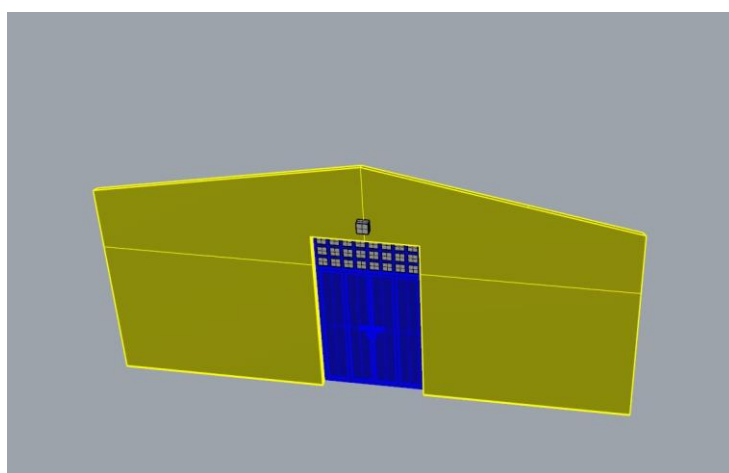
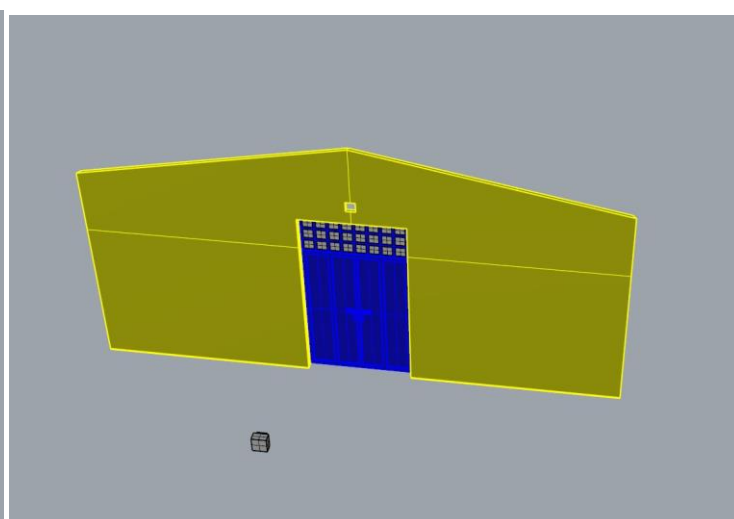
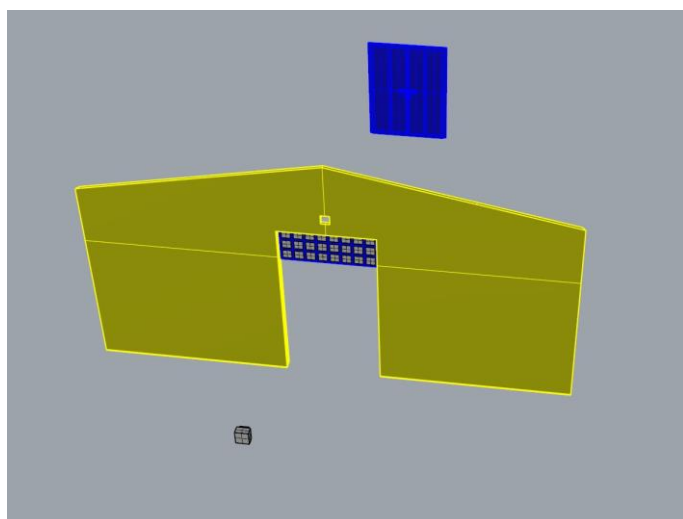
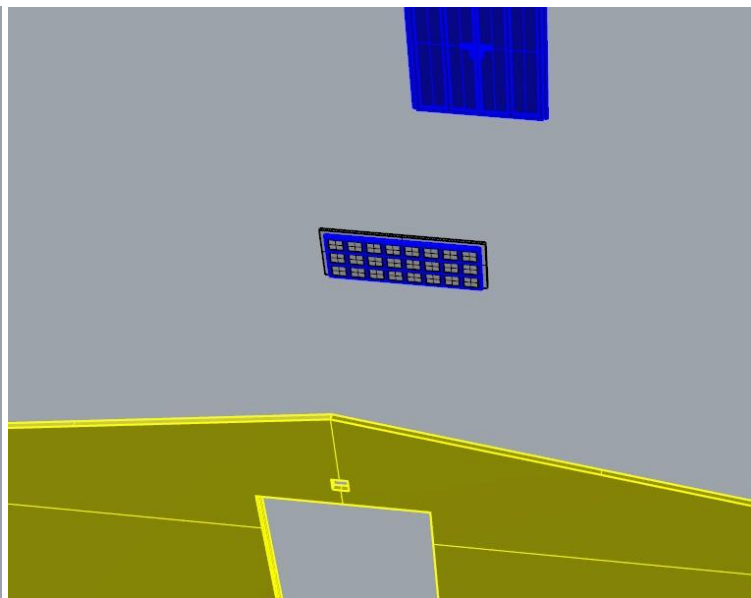
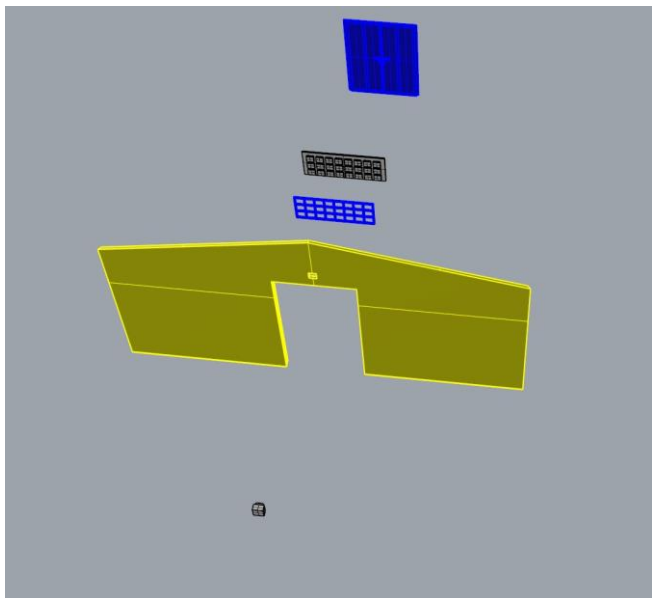
2. oldal:



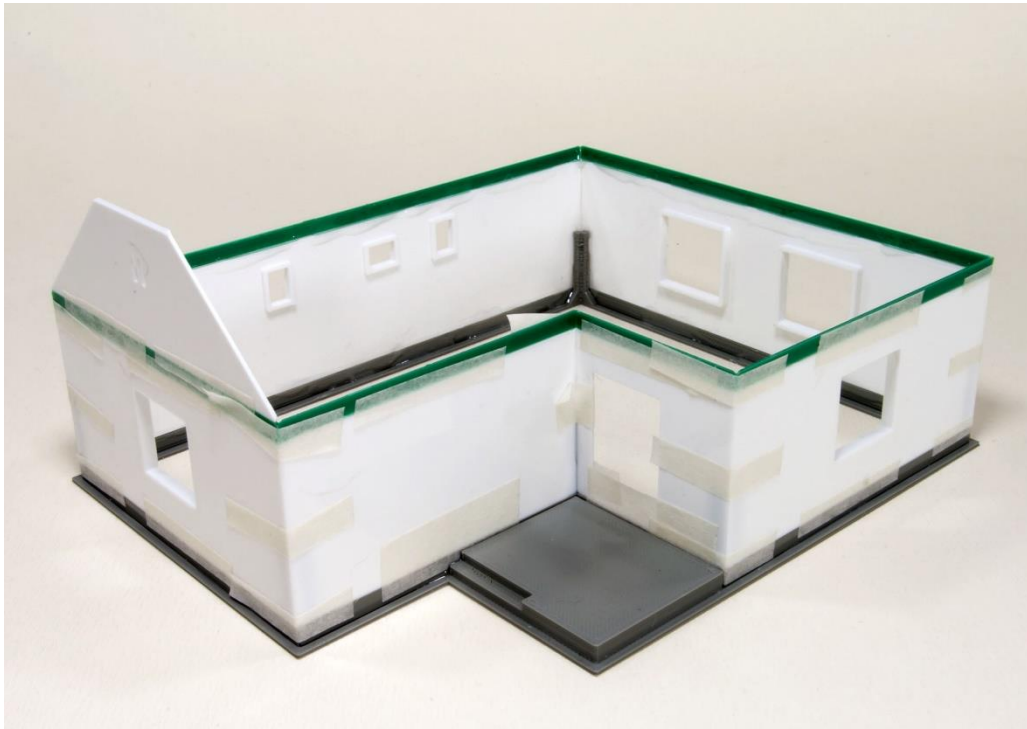
3. oldal:



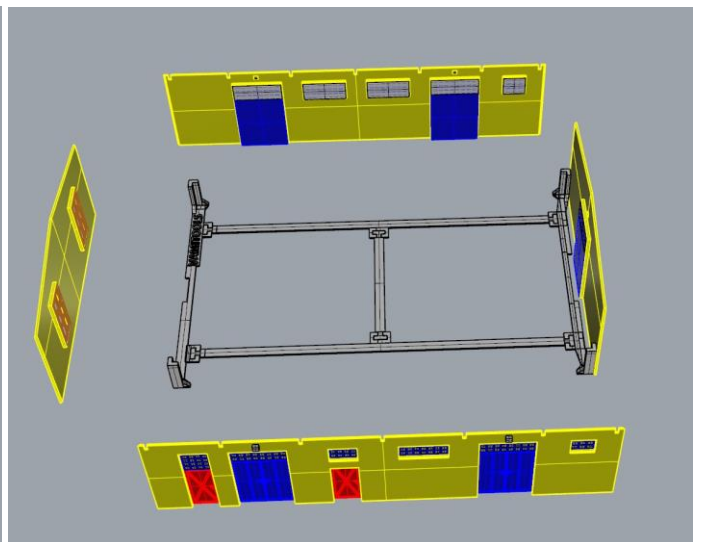
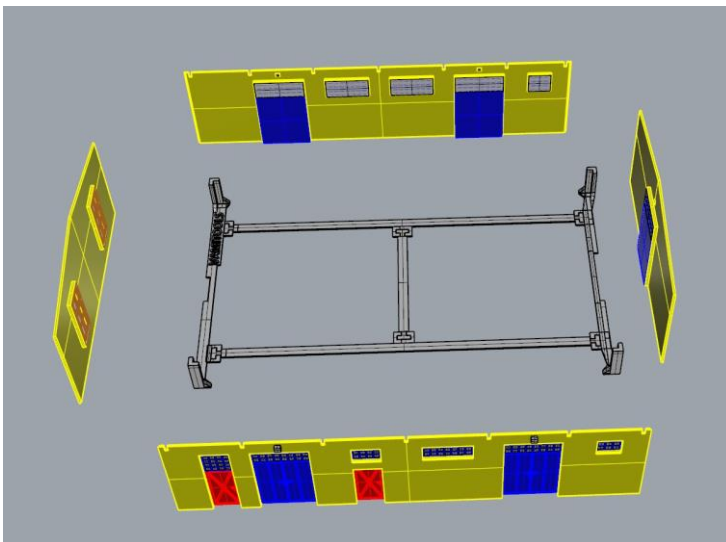
4. oldal:

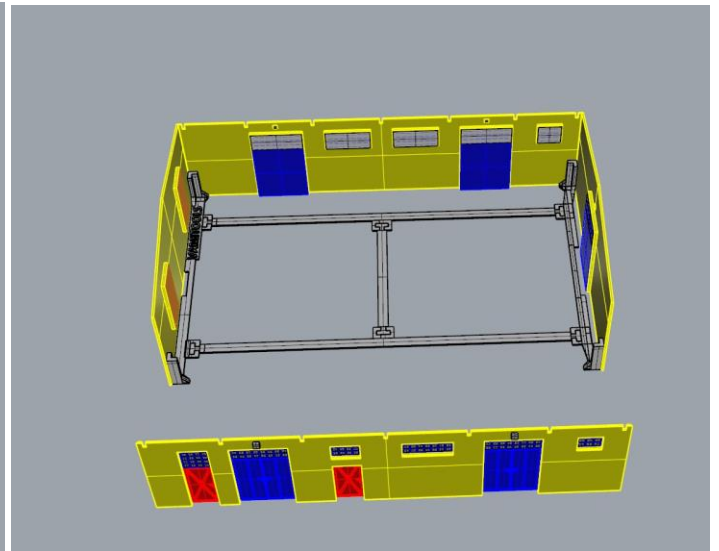
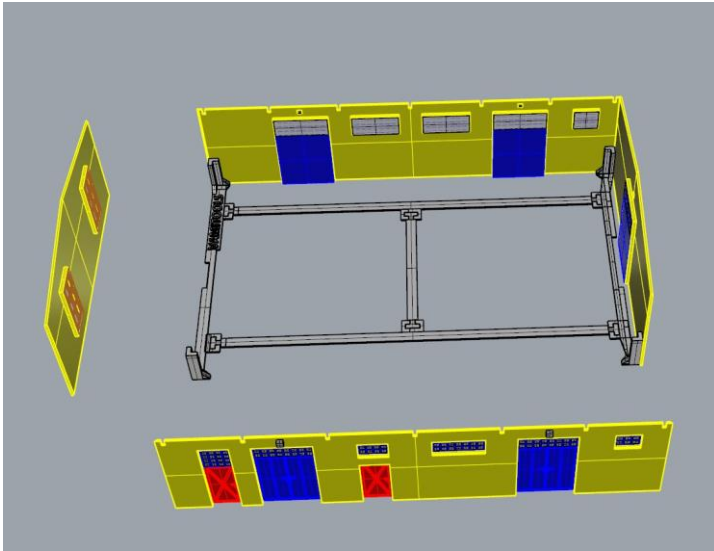


Ragasztási segédletként a falakat ragasszuk össze ideiglenesen az alábbi képen látható módon Scotch Magic vagy Krepp takarószalaggal, így a falak a későbbi ragasztás során nem fognak elmozdulni. Egy-egy saroknál akár több helyen is megragaszthatjuk a ragasztószalaggal, így még biztosabb tartást kapunk.

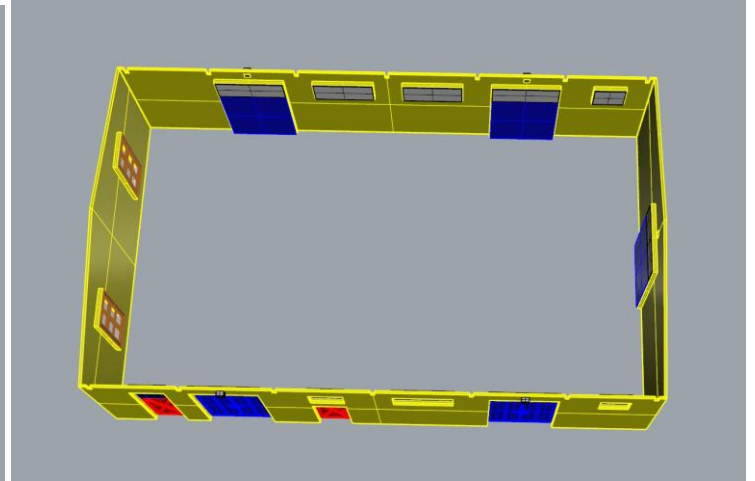
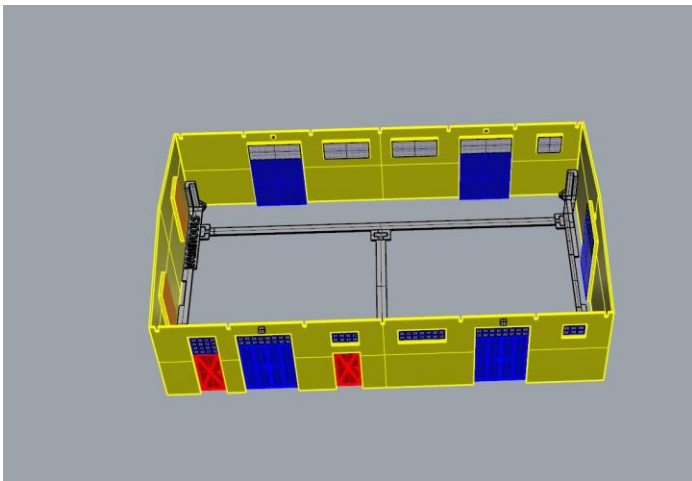


Az alapot a falaknál csak ragasztási segédnek használjuk, NE ragasszuk hozzá!

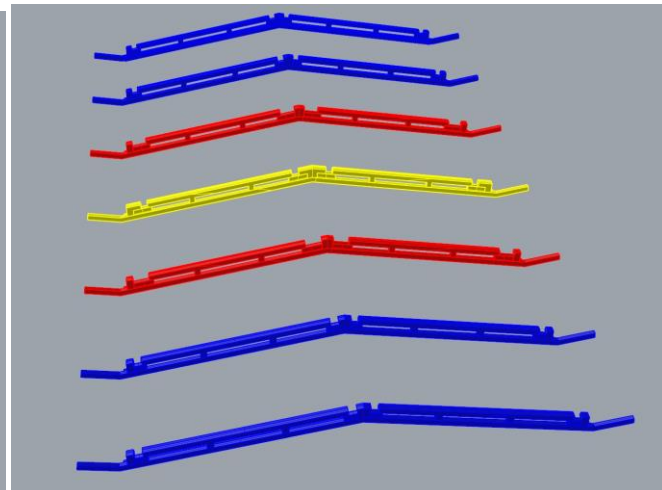
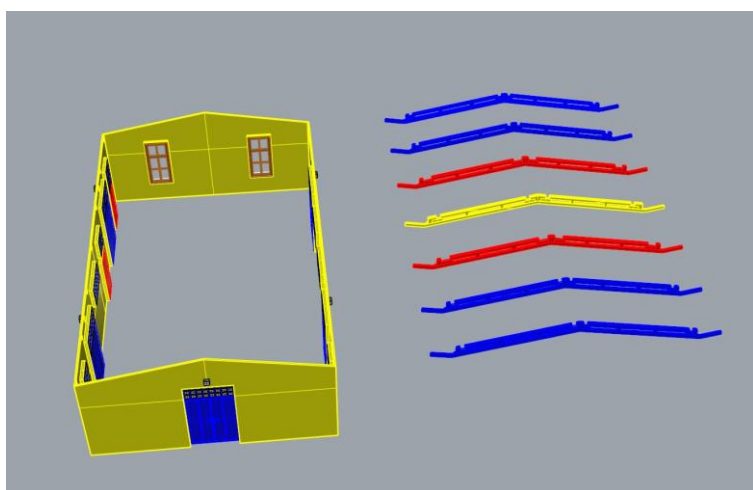
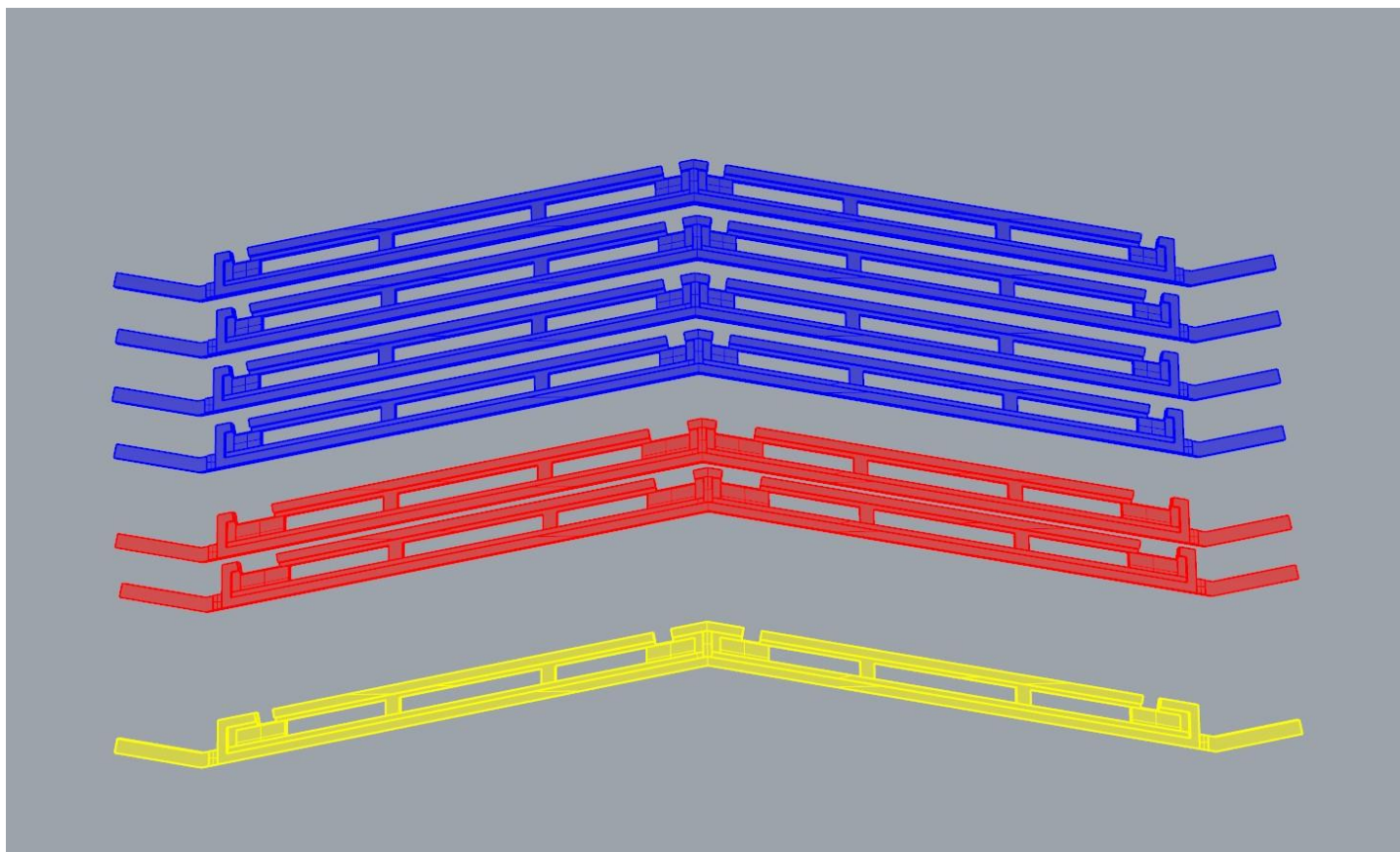




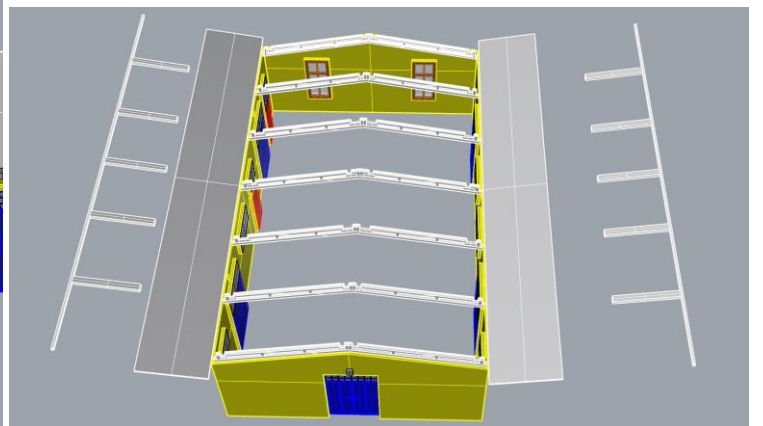
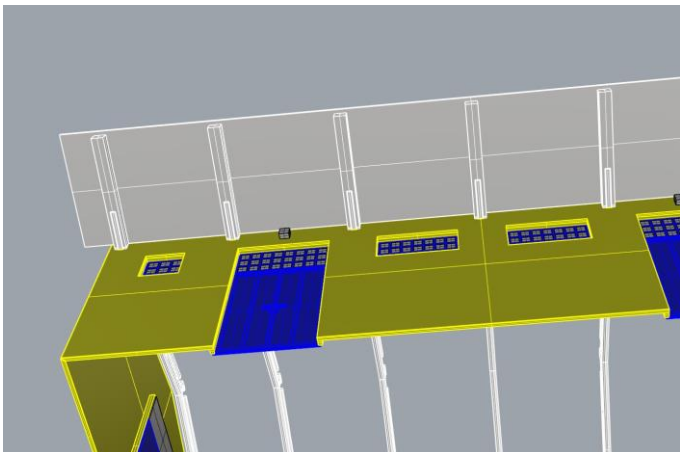
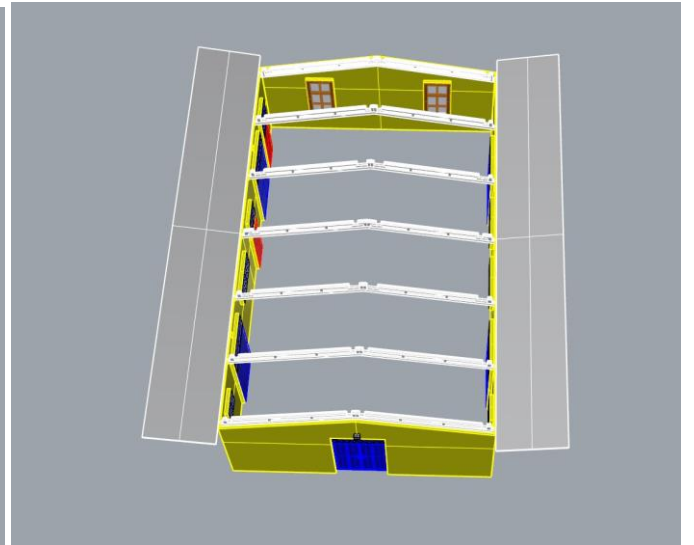
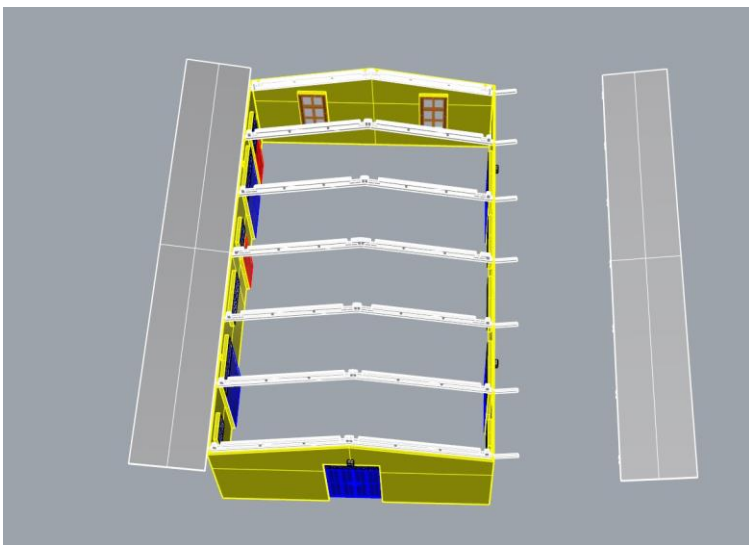
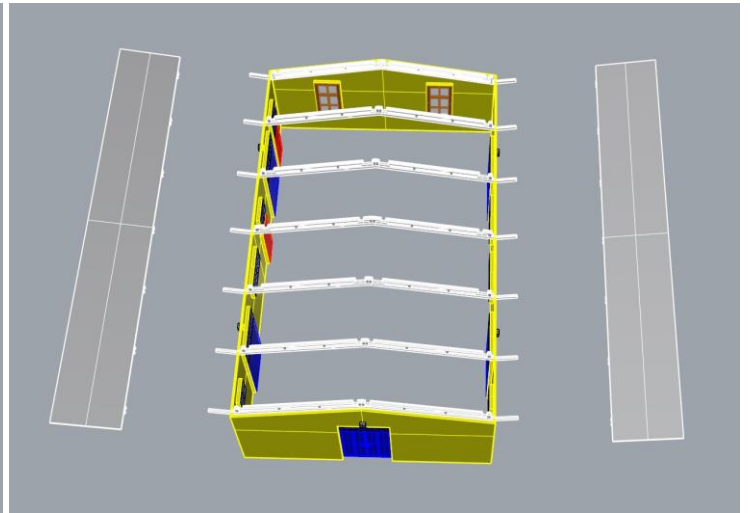
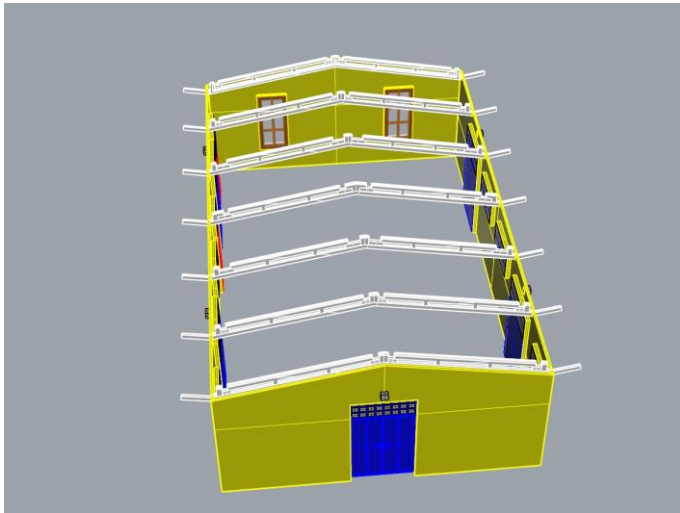
Az alapot a végén távolítsuk el!

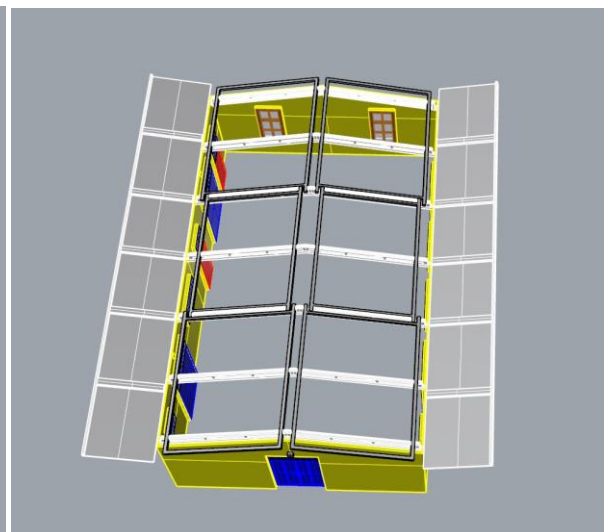
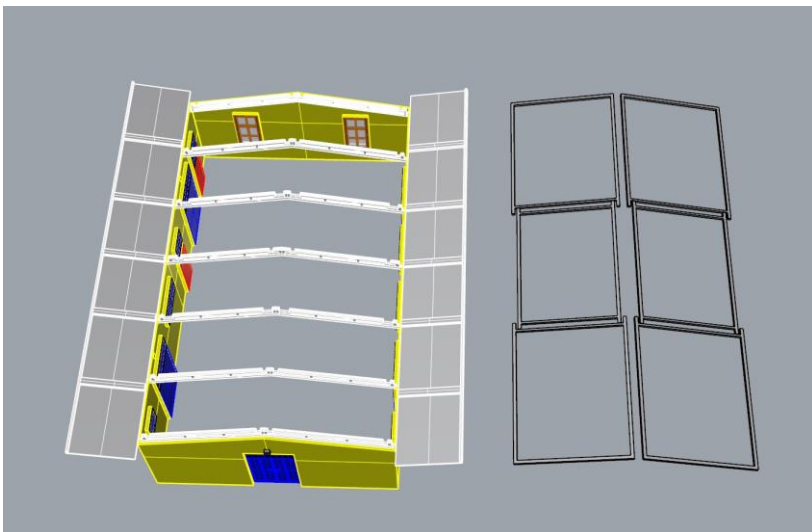
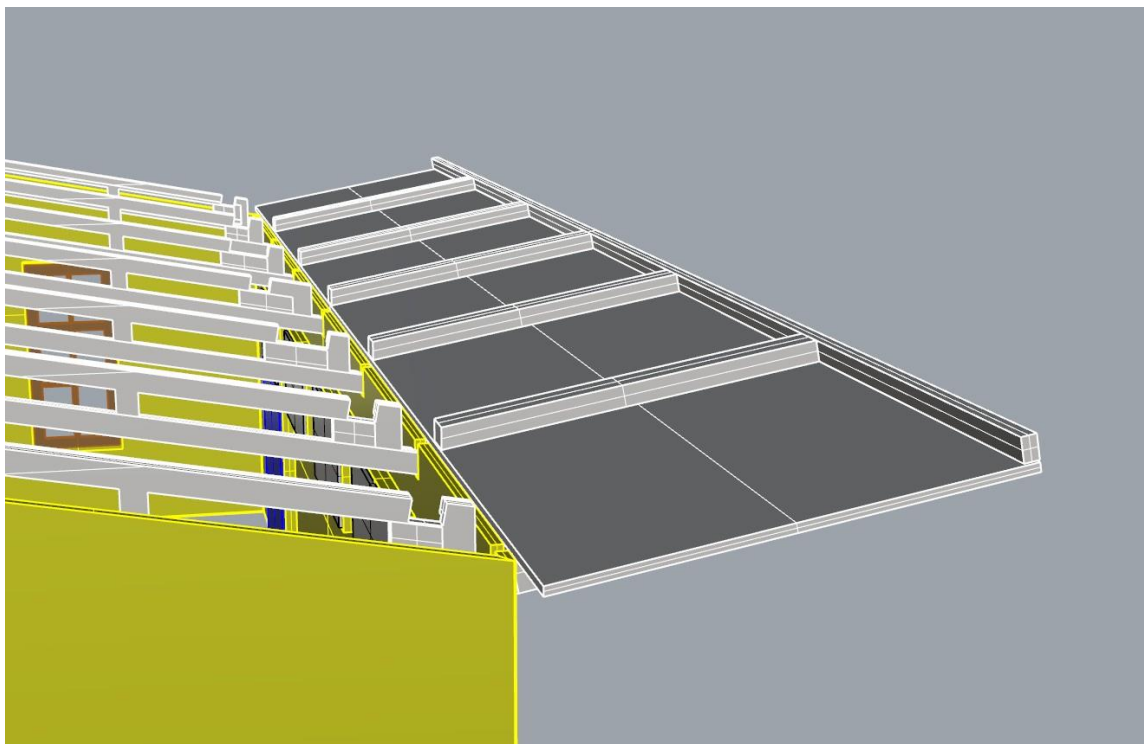
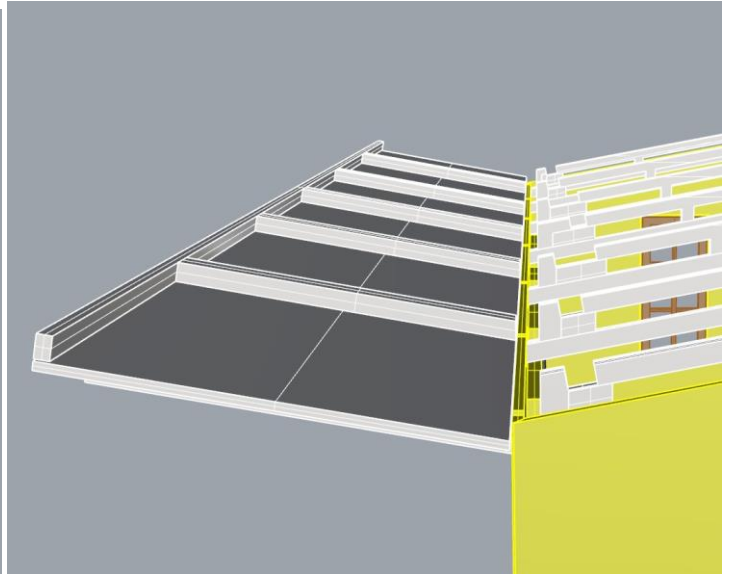
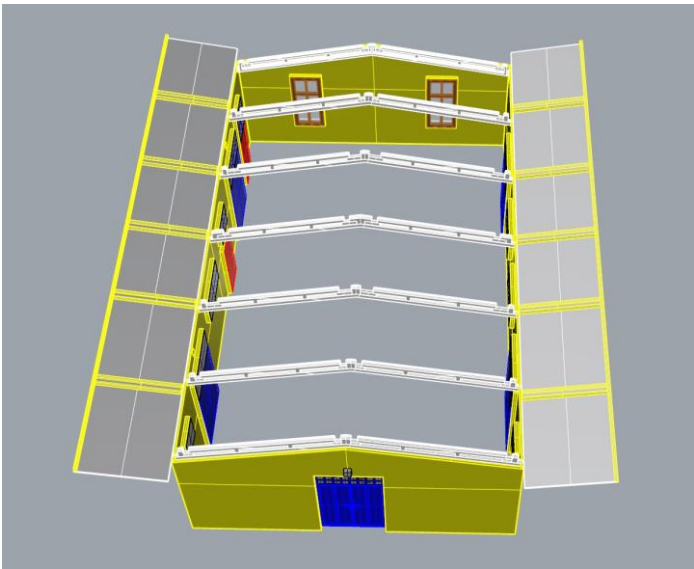


A gerendáknál 3 típus van! A jobb láthatóság érdekében különböző színekkel jelöltük a képen. A különbség a tetejükön levő bemélyedések helyzetében és méretében van! Válogassuk szét őket és a képek szerinti elosztásban tegyük fel az épületre őket!

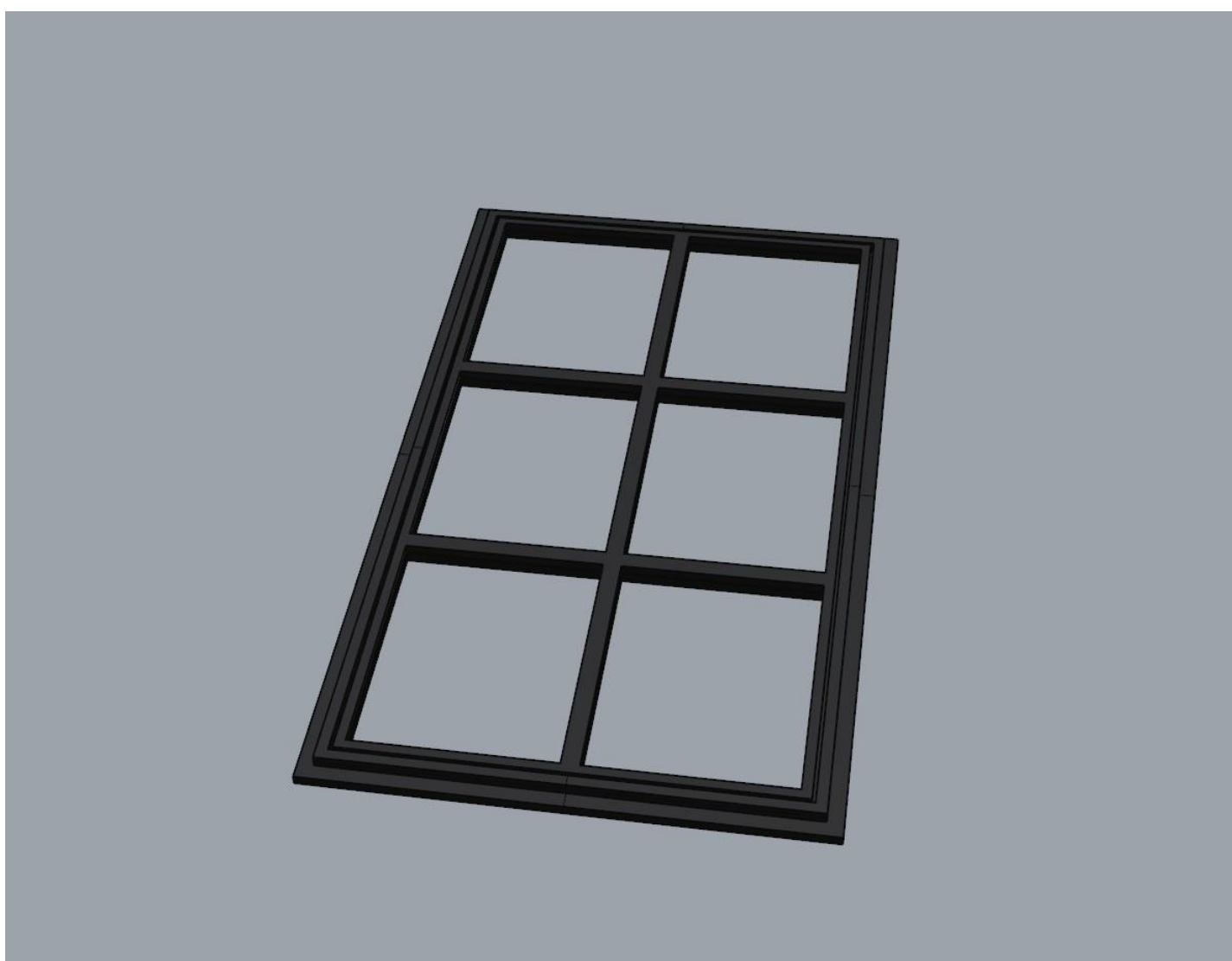
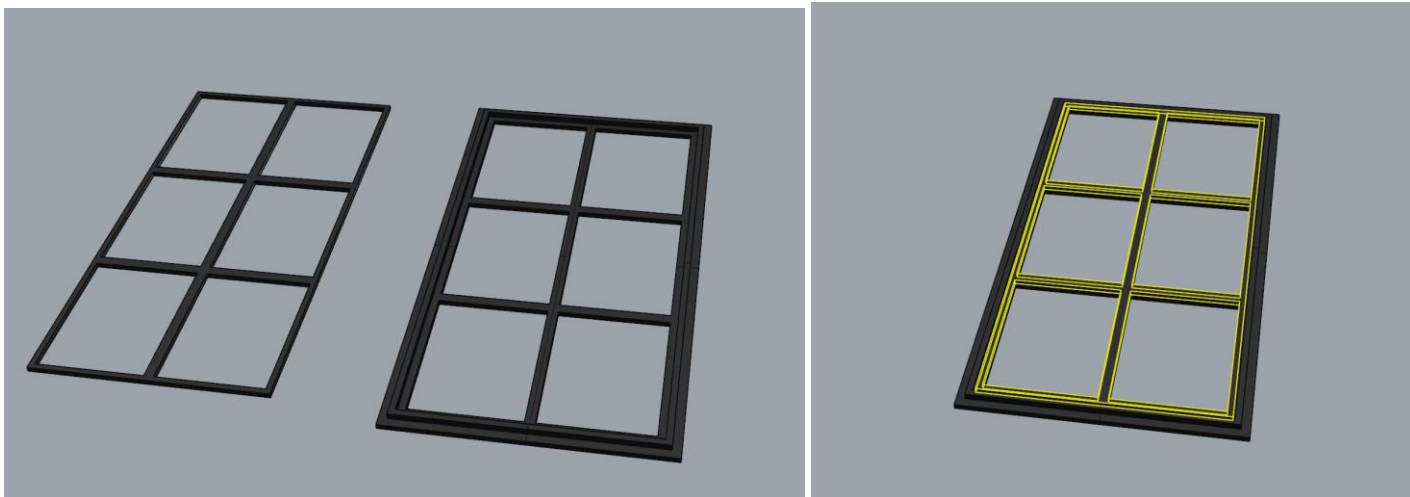


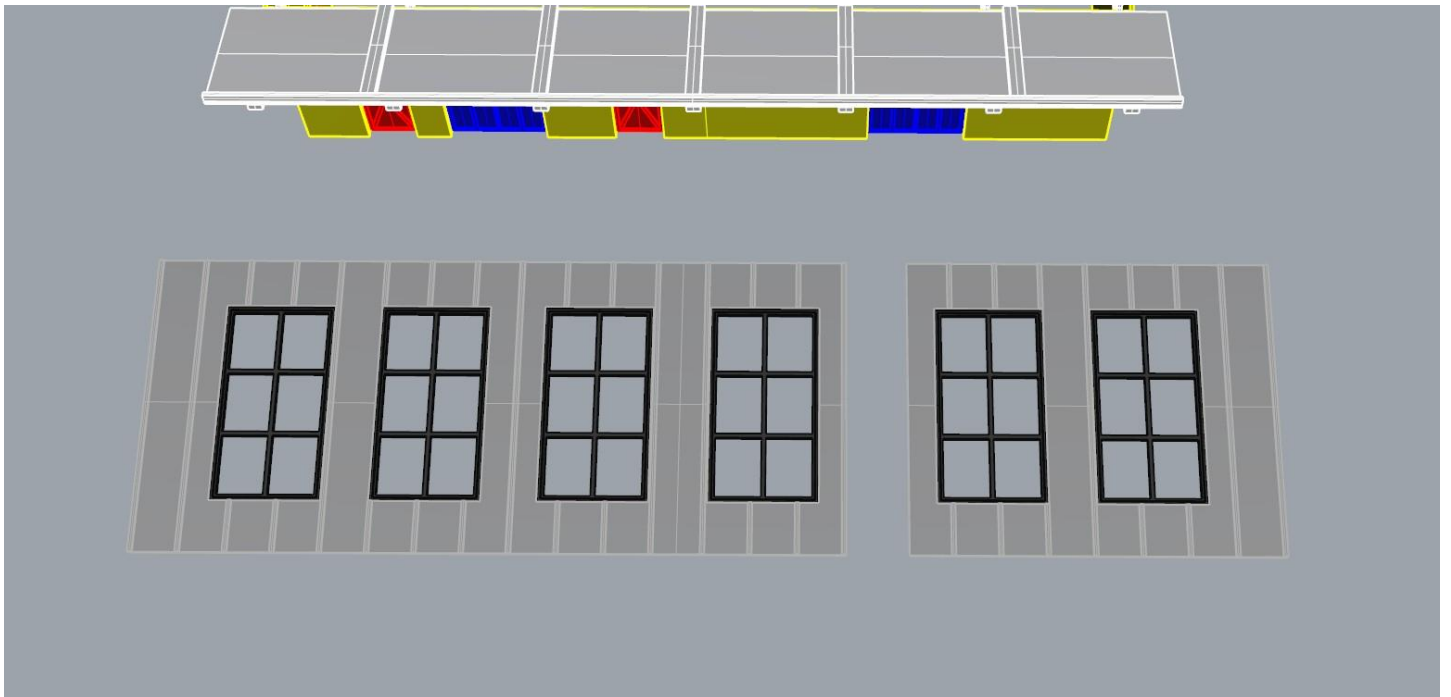
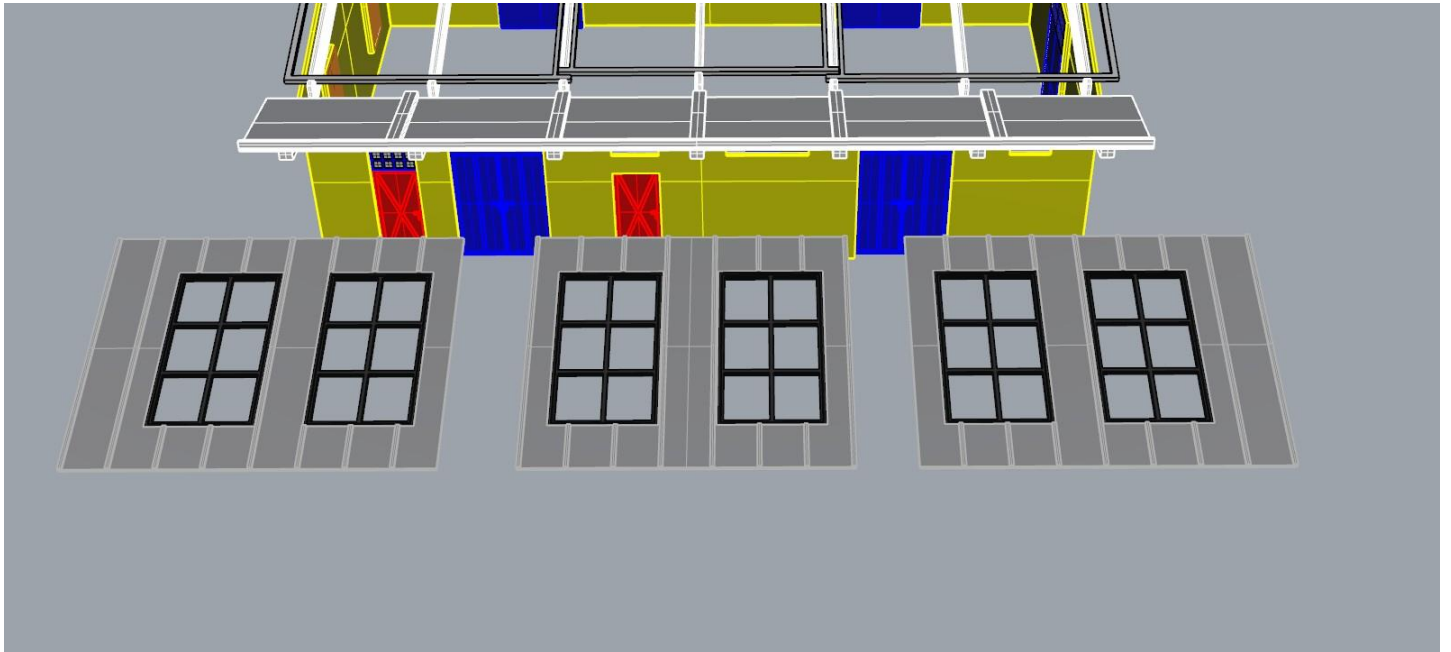
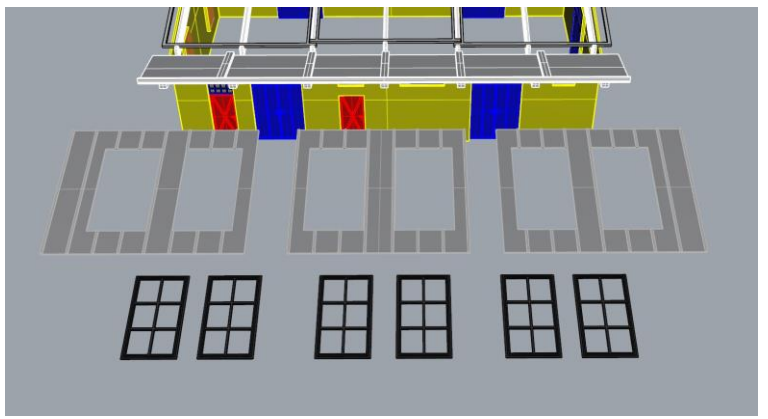
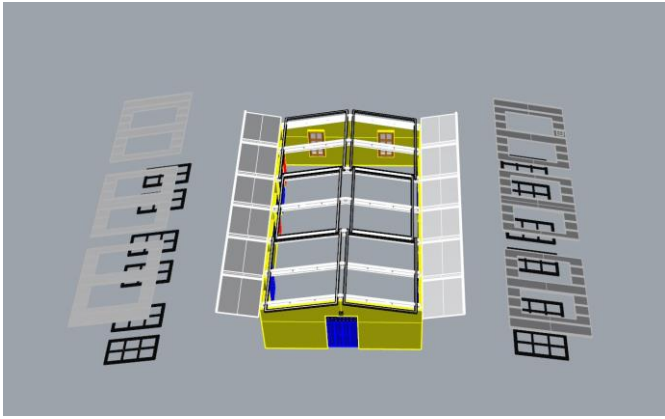


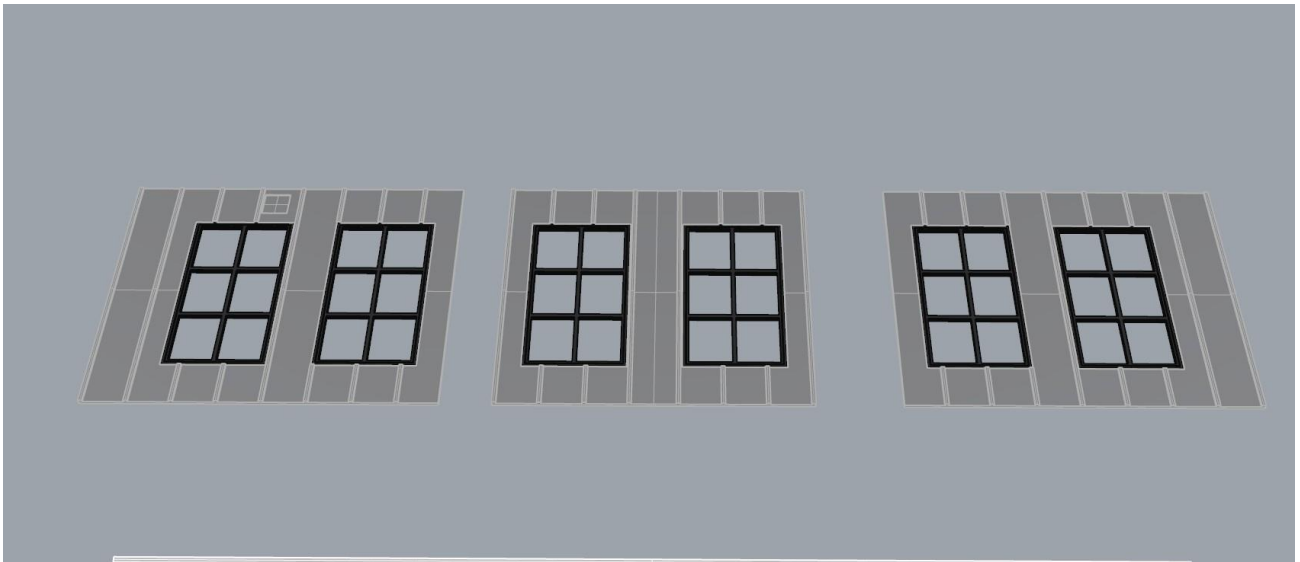
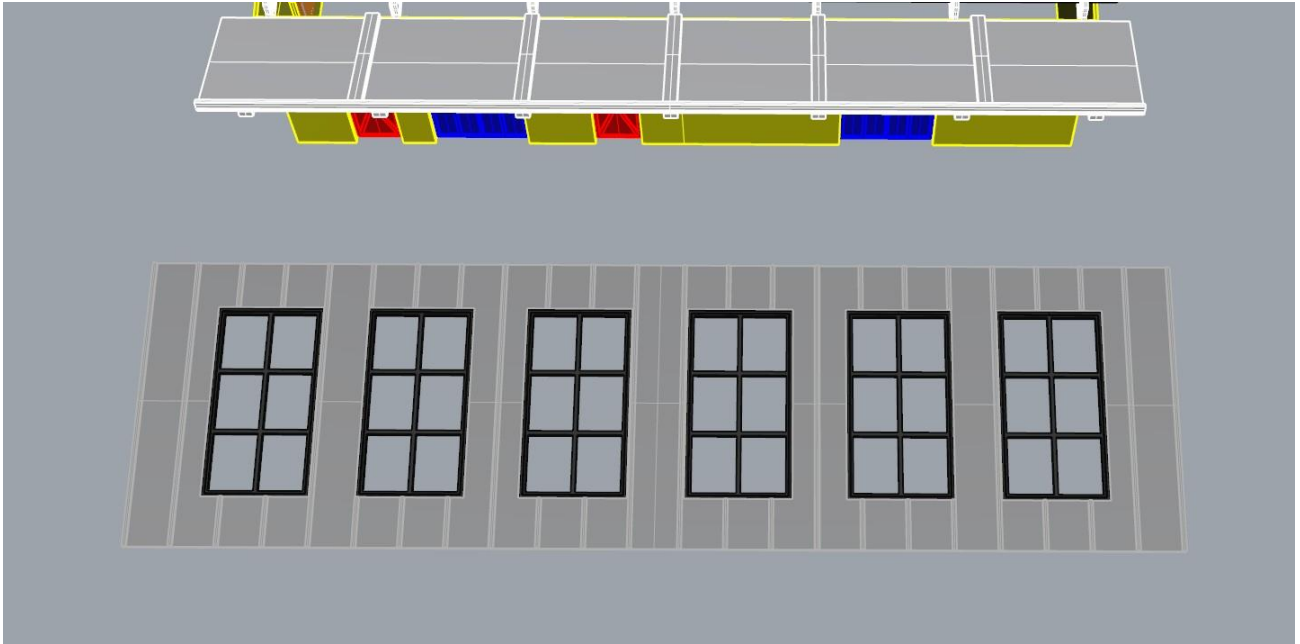


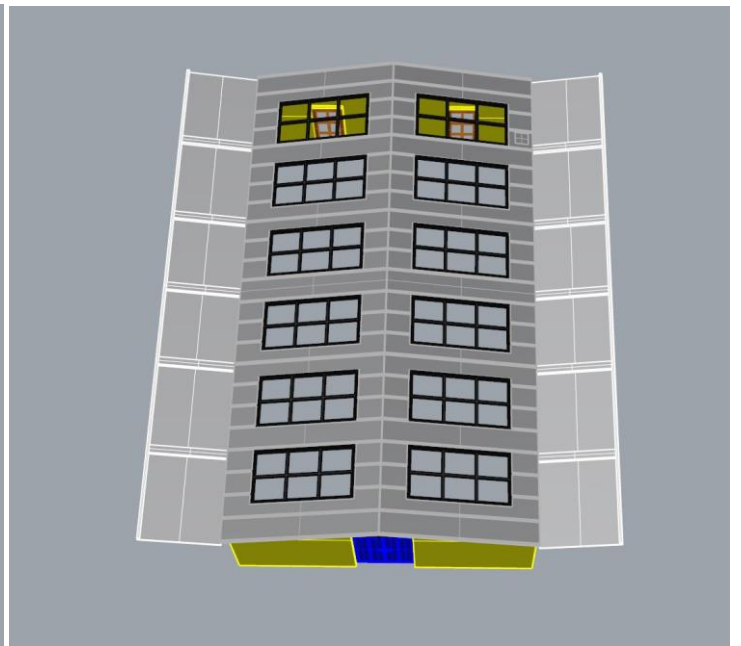
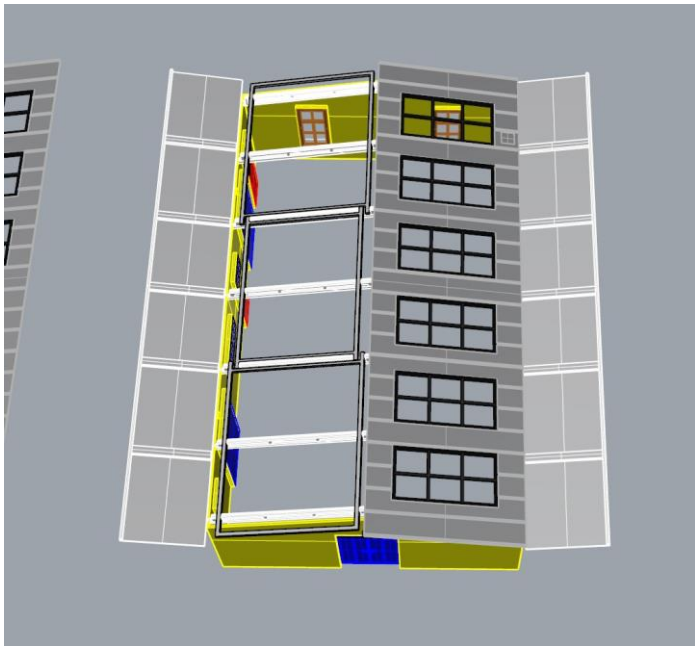


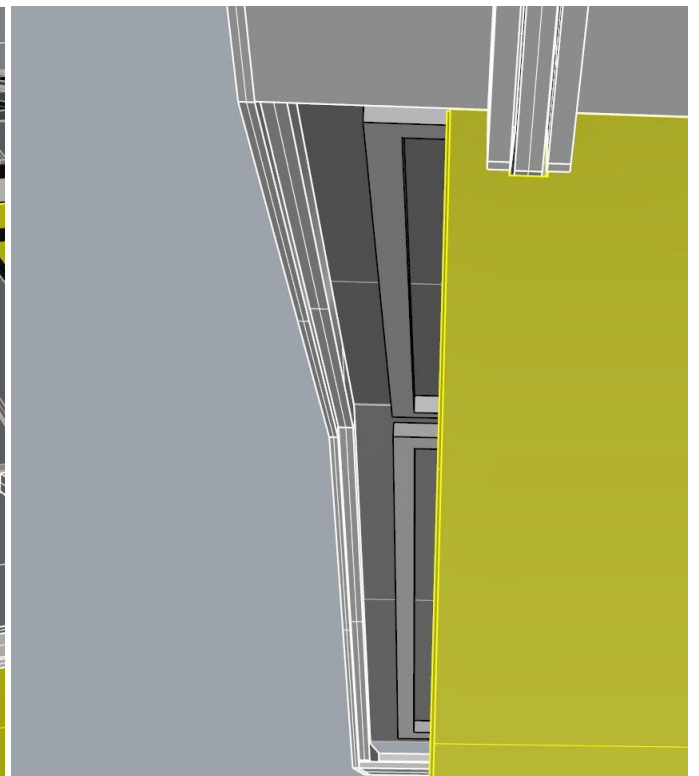
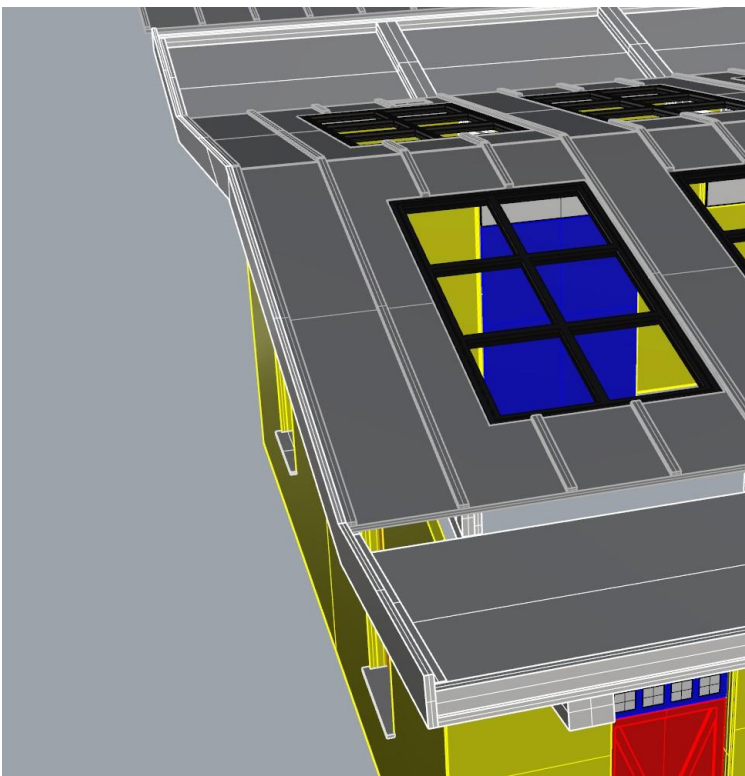
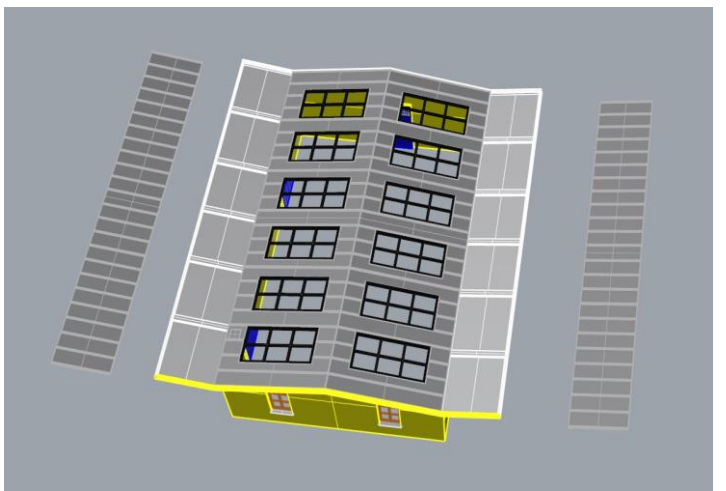
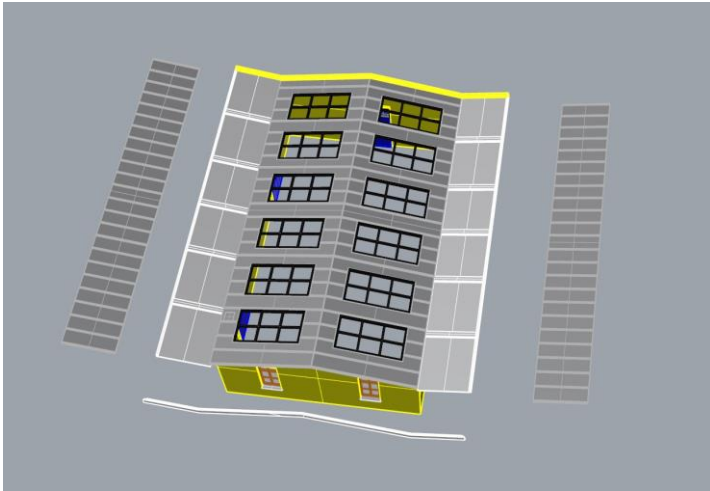
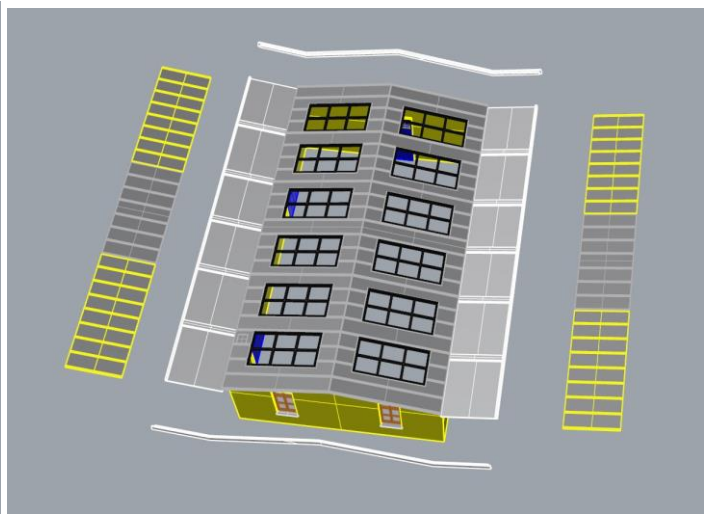
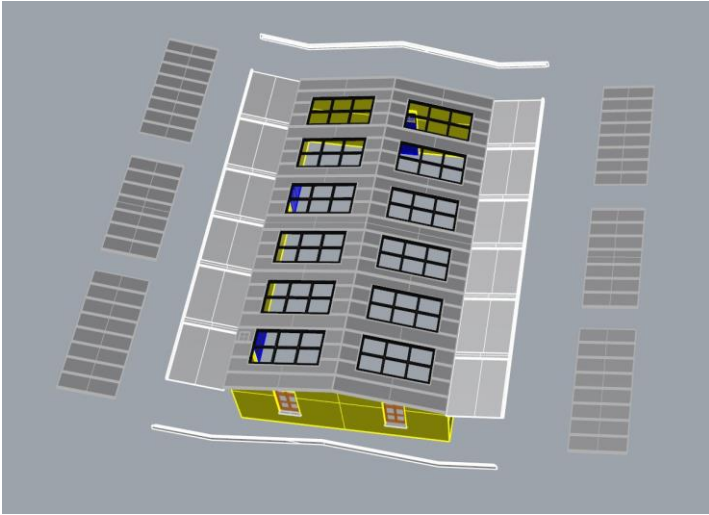
Az ablakok két részből állnak. A kettő közé kell betenni az üvegimitációkat.

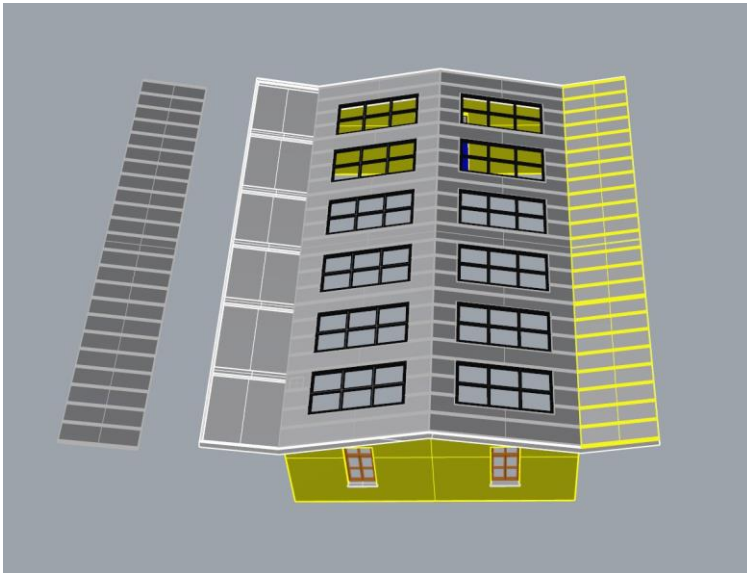




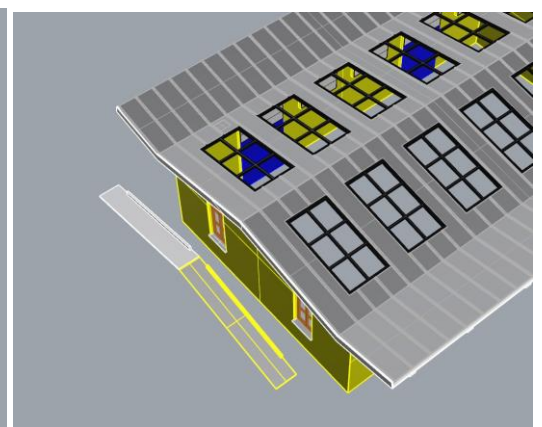
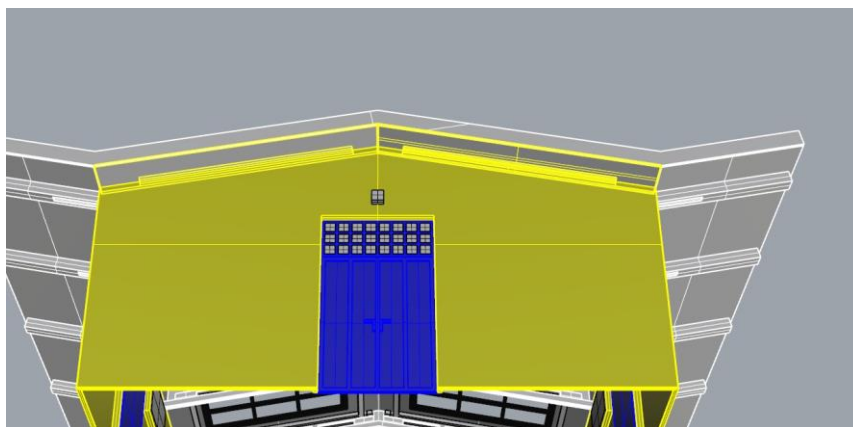
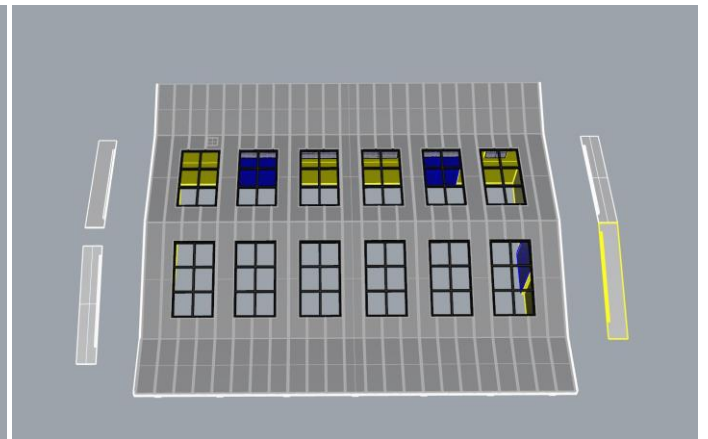
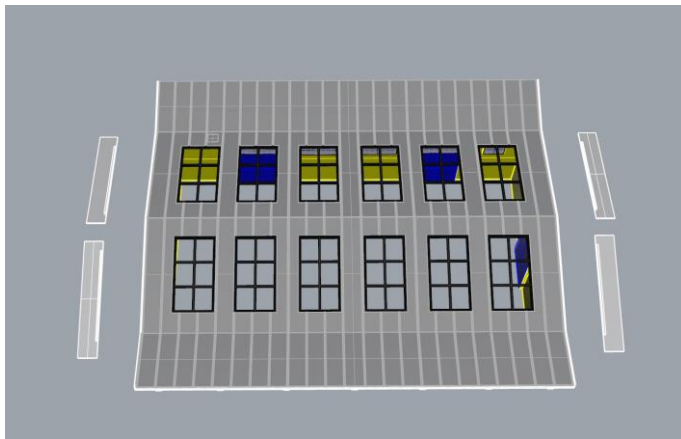






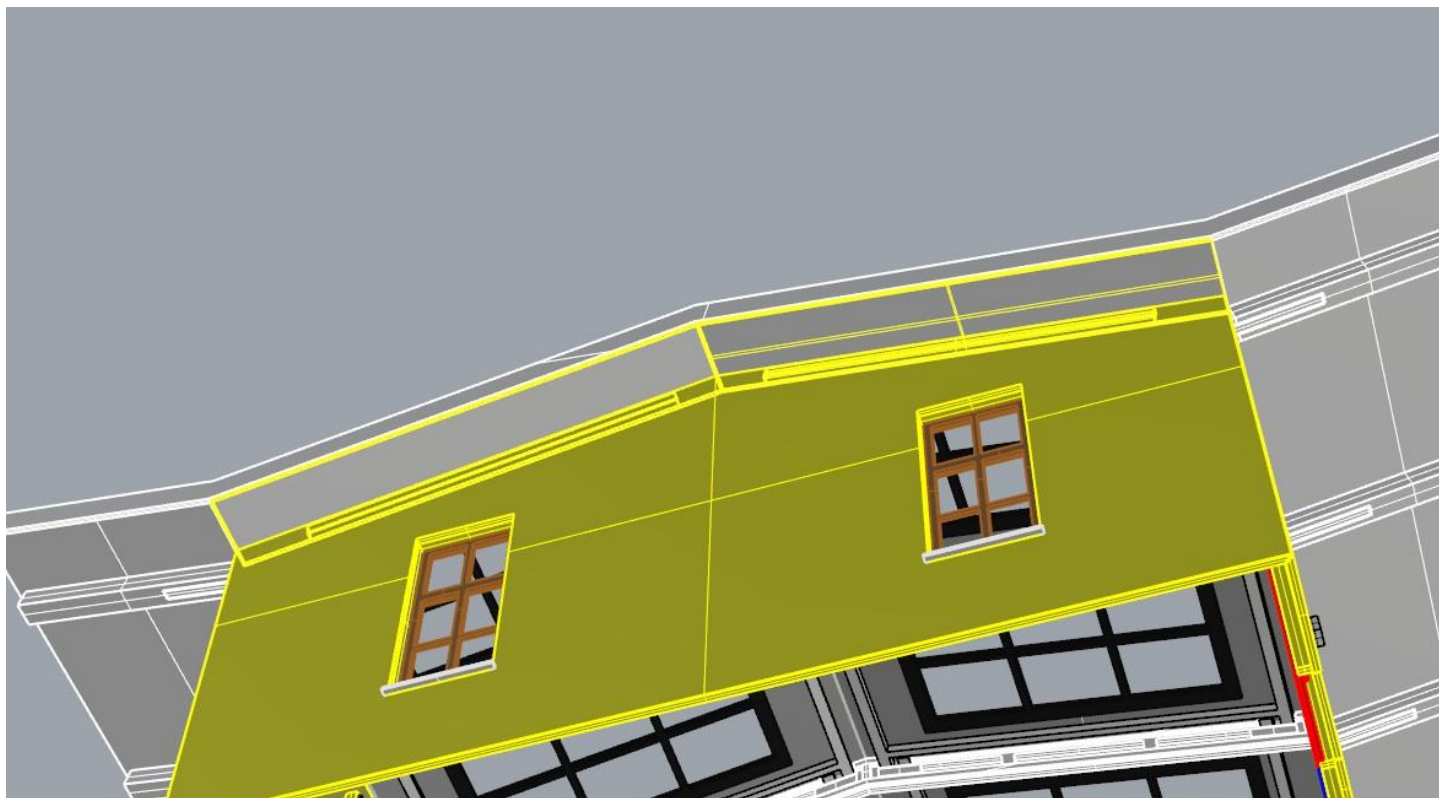


Ennél a négy elemnél figyeljünk rá, hogy nem elég csak a falig betolni őket, hanem a fal felett át kell kicsi tolni úgy, hogy pont a tető széléig érjen. Nézzük a képeket, azok segítenek!

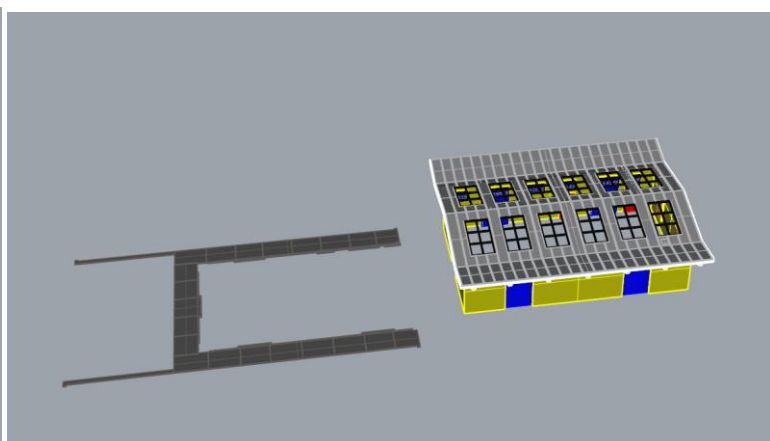
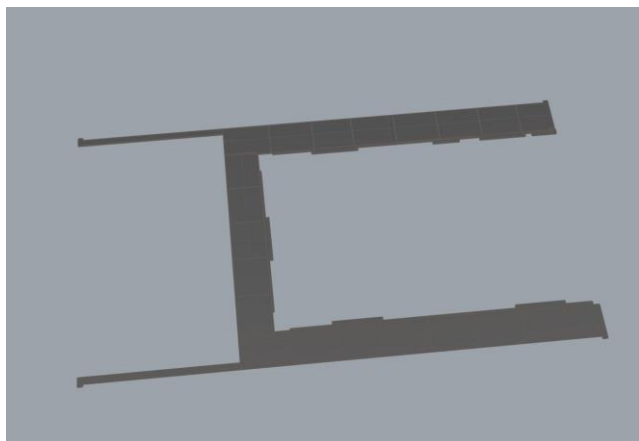
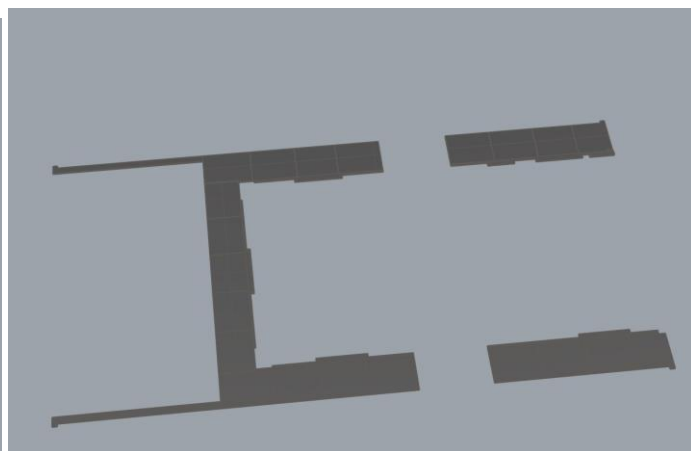


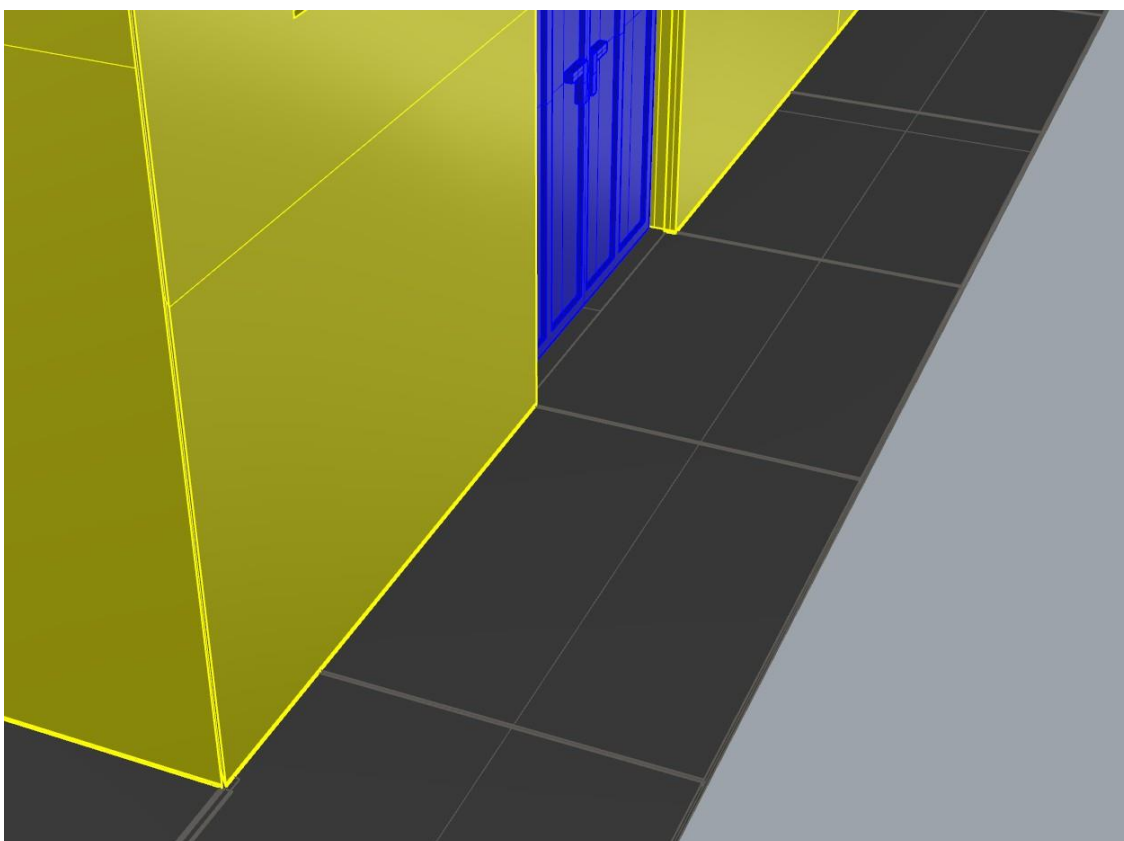
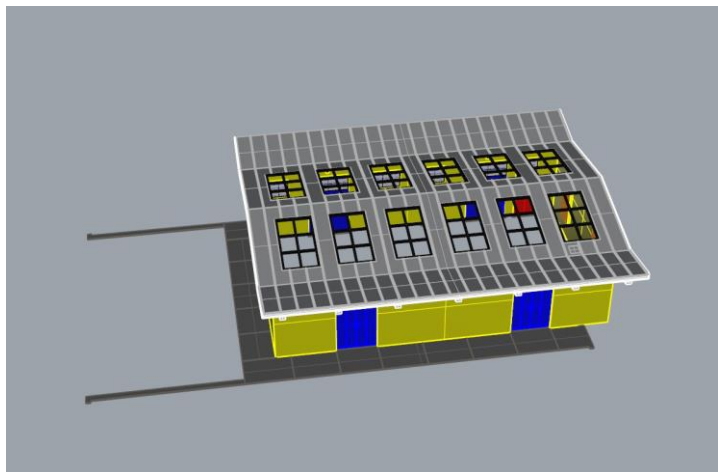


Itt látszik, ahogy a falon túlnyúlik belfelé.

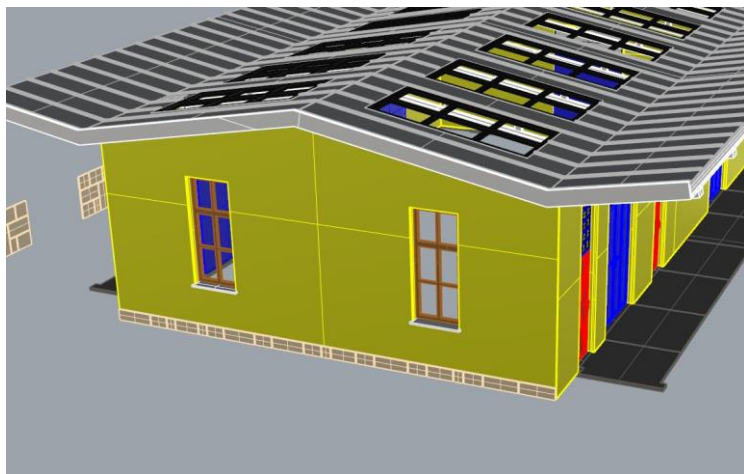
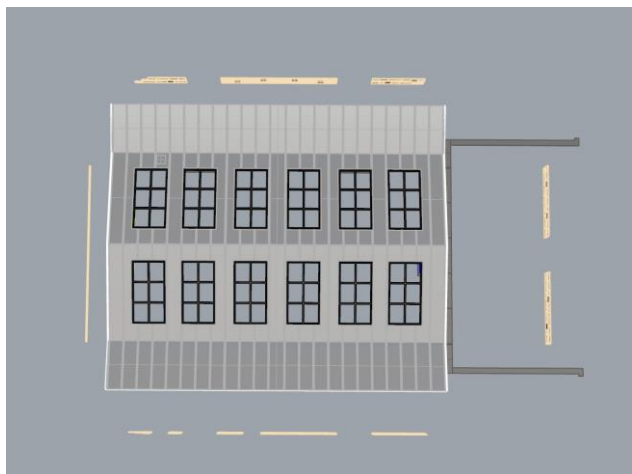


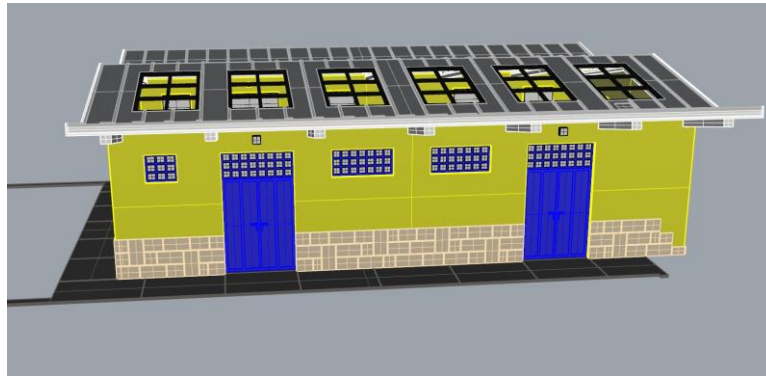
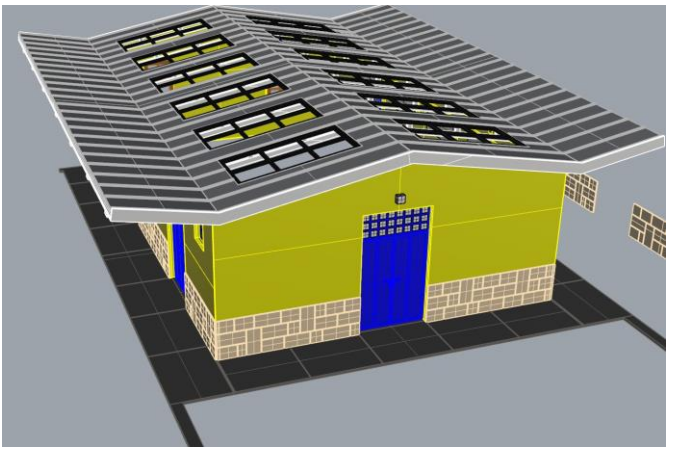
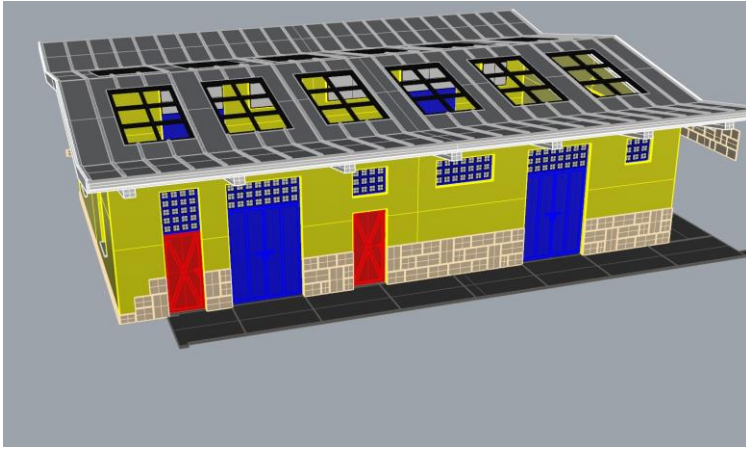
Tegyük a falak alá a betonozott részt.



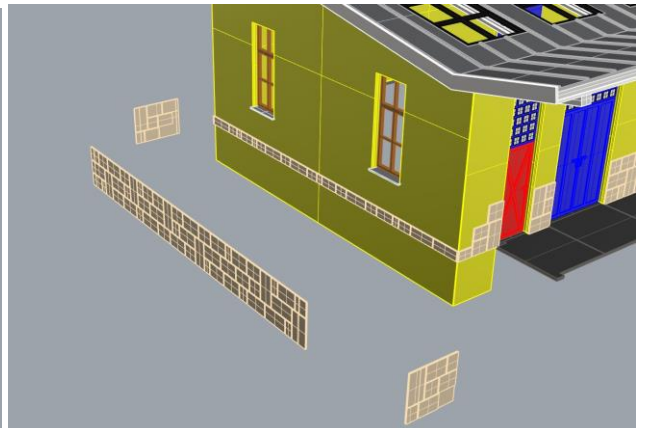
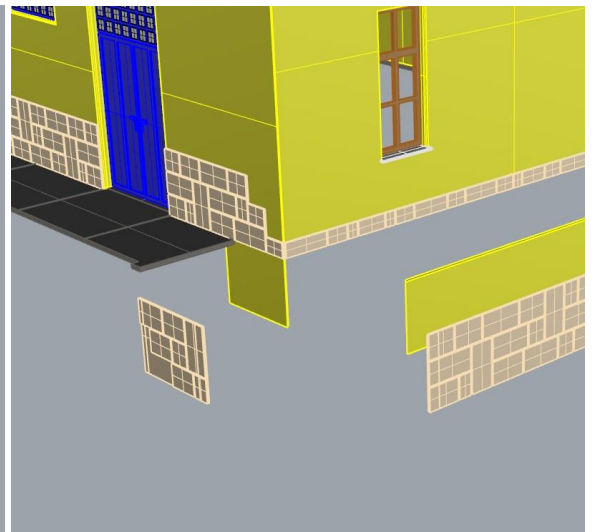
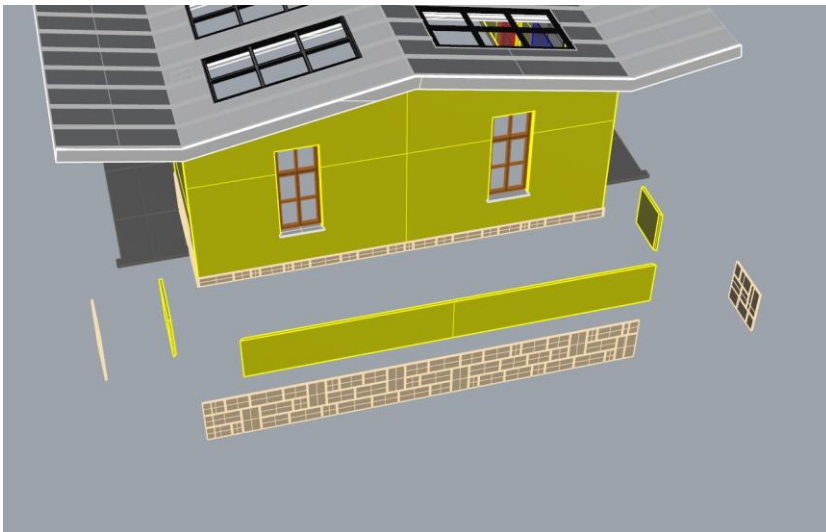


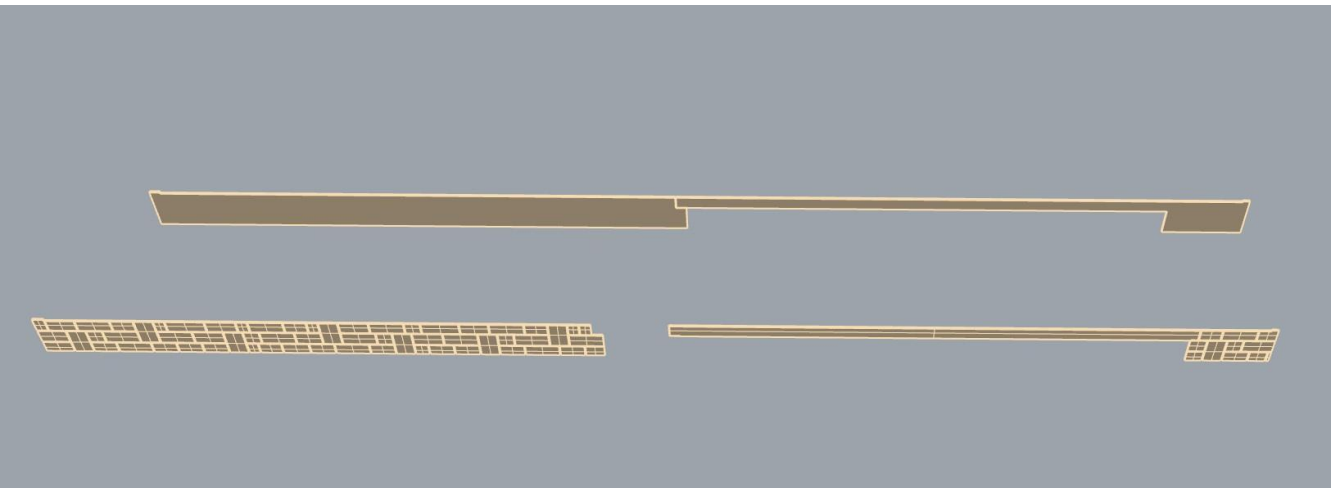
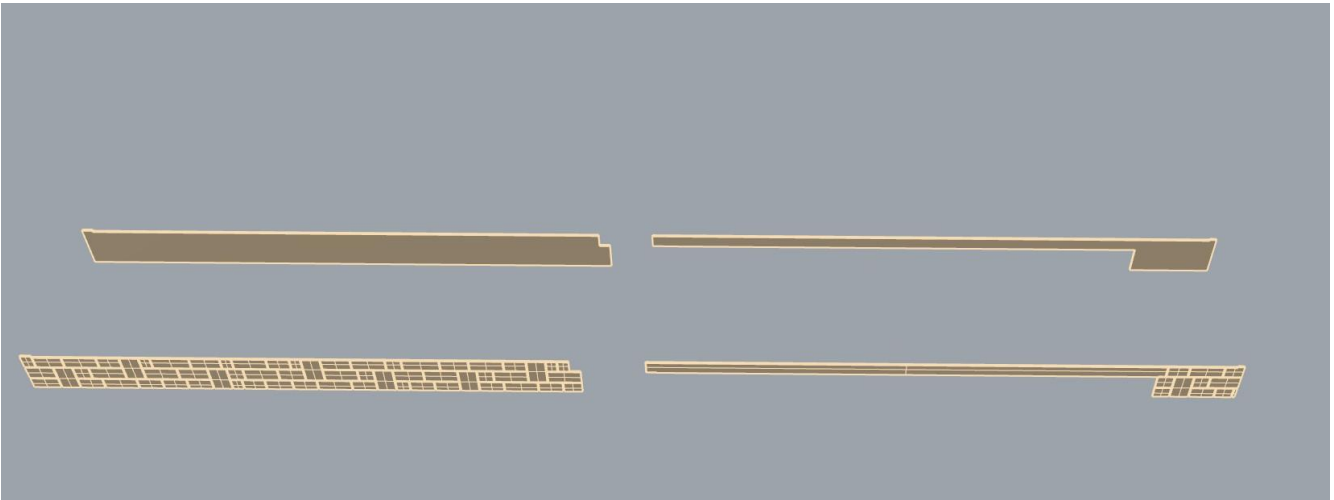
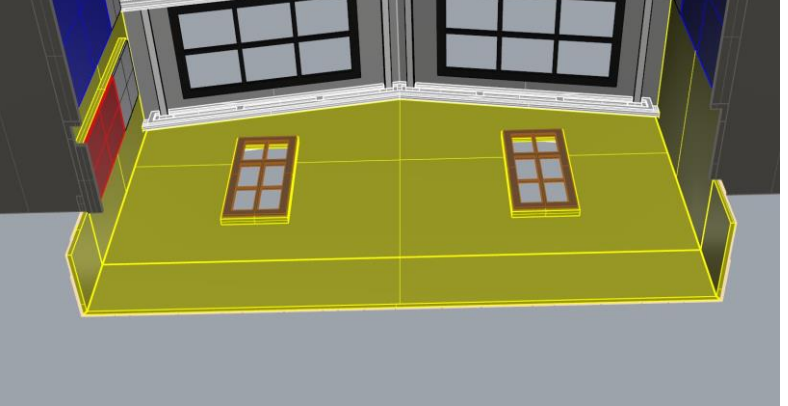
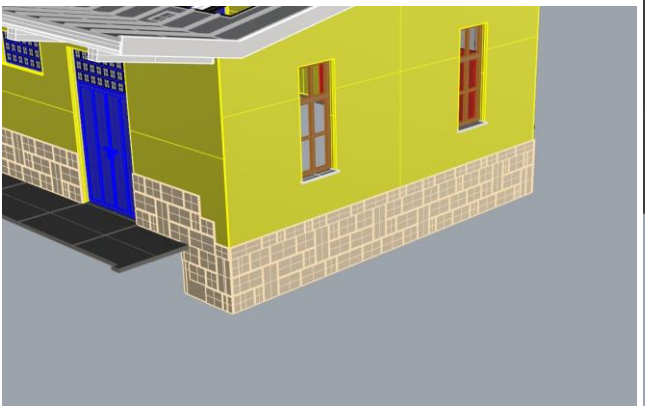
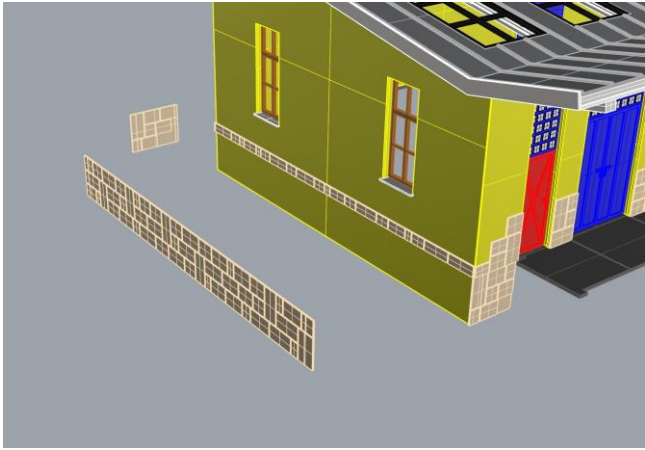
Rakjuk fel az épület ezen falaira a díszkövezést.

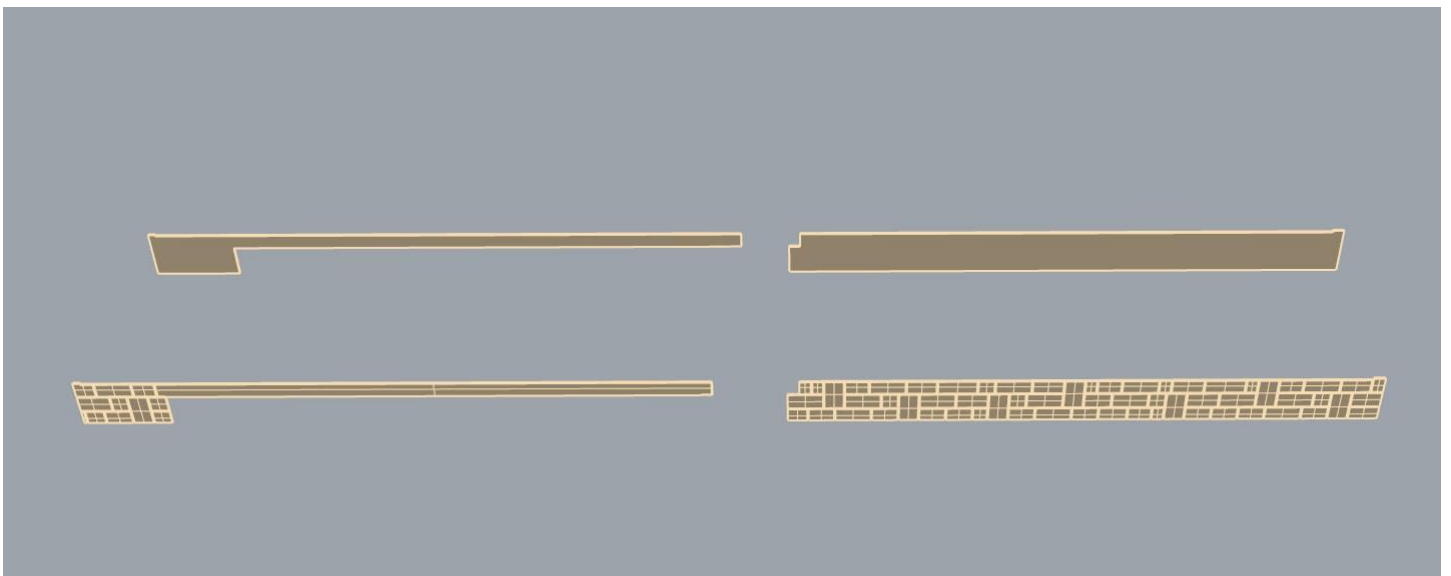
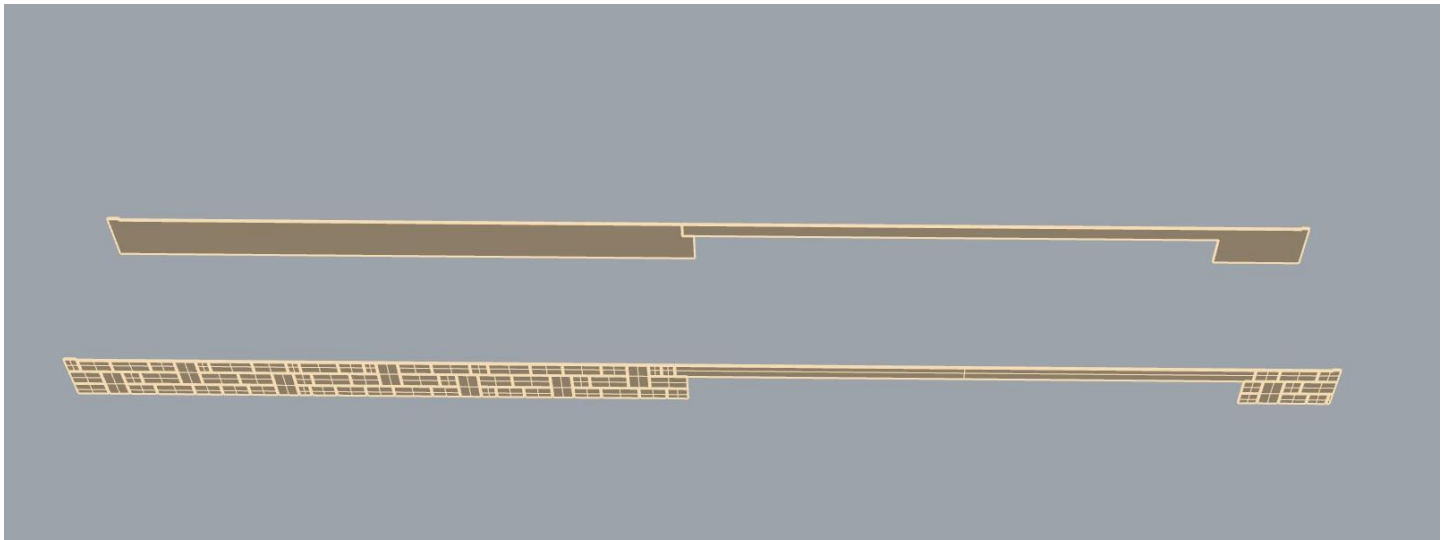


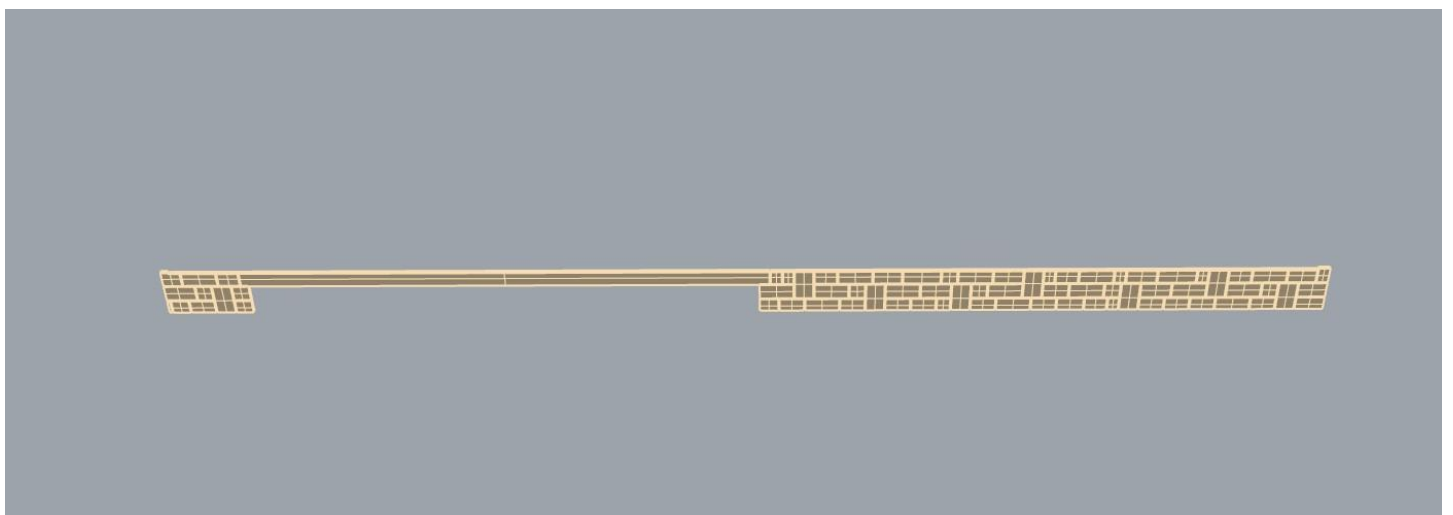
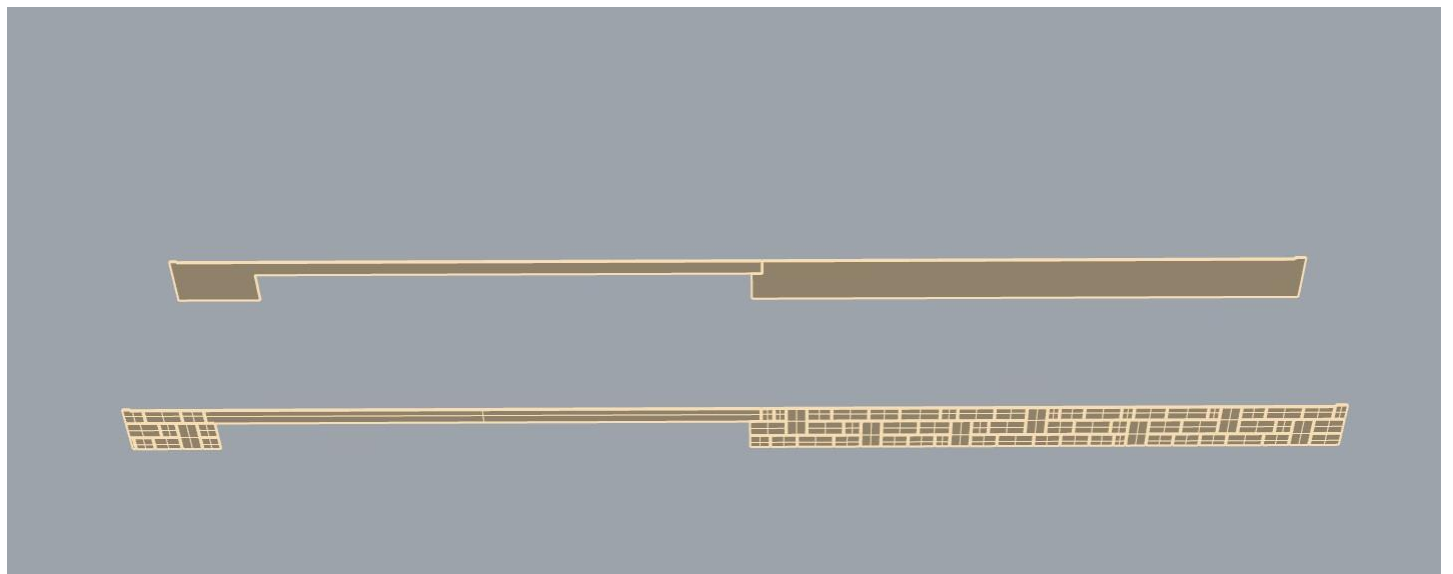
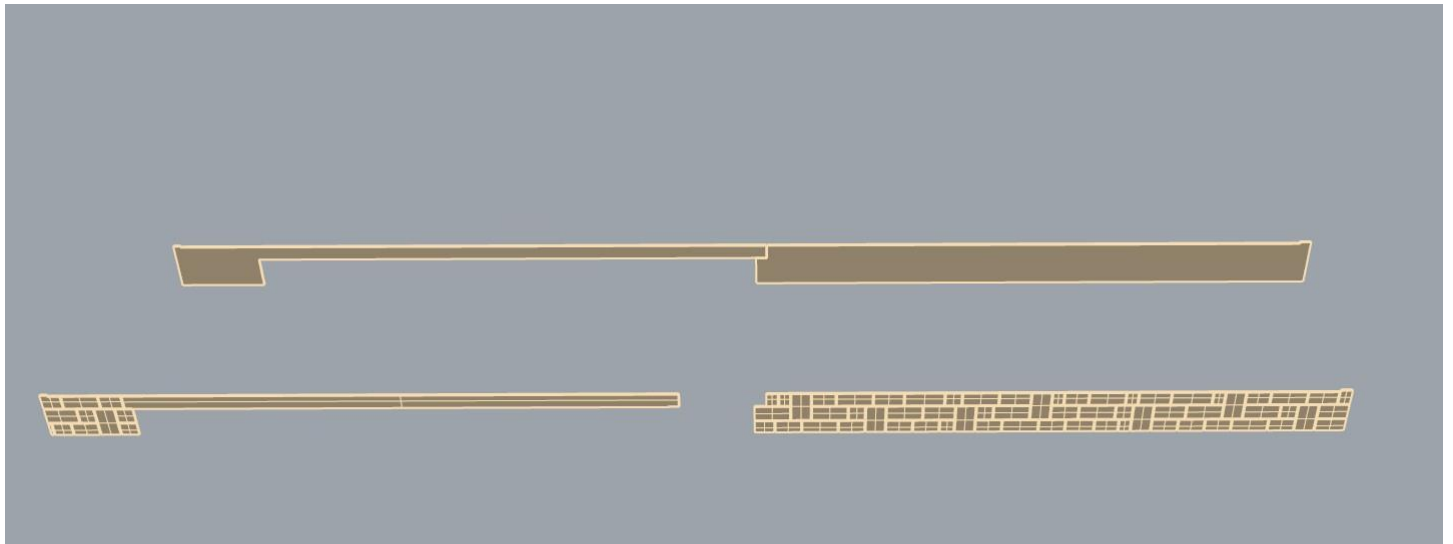


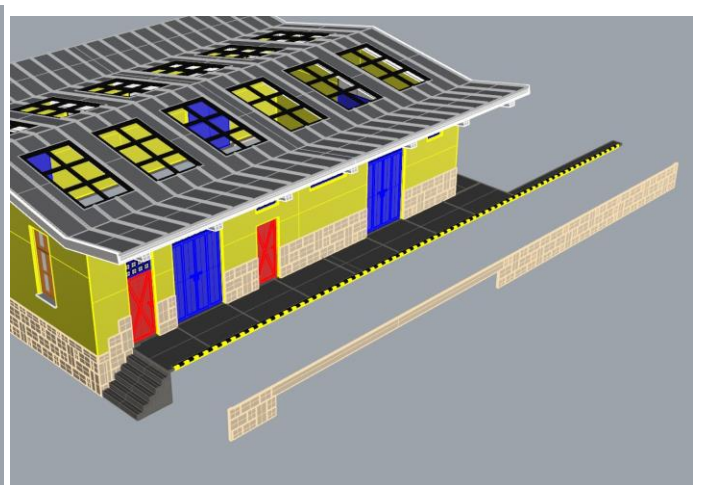
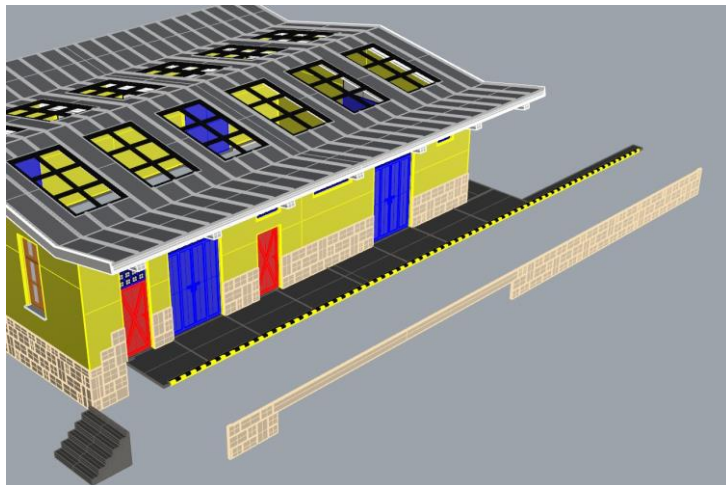
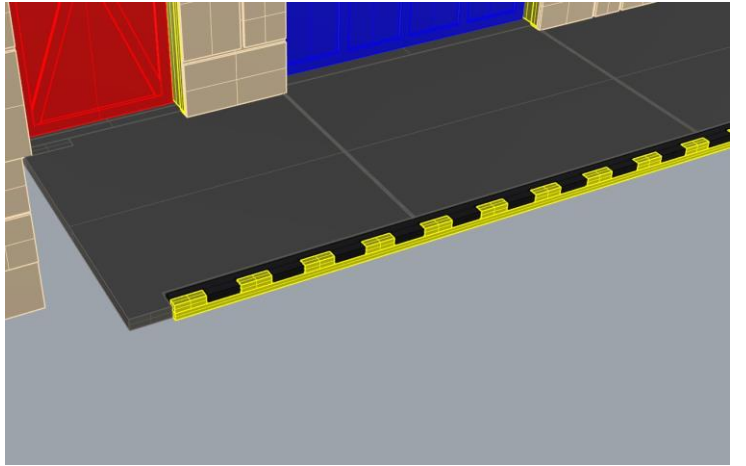
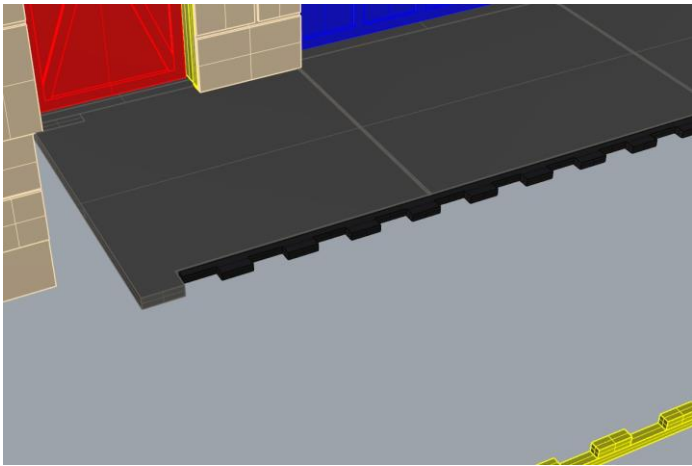
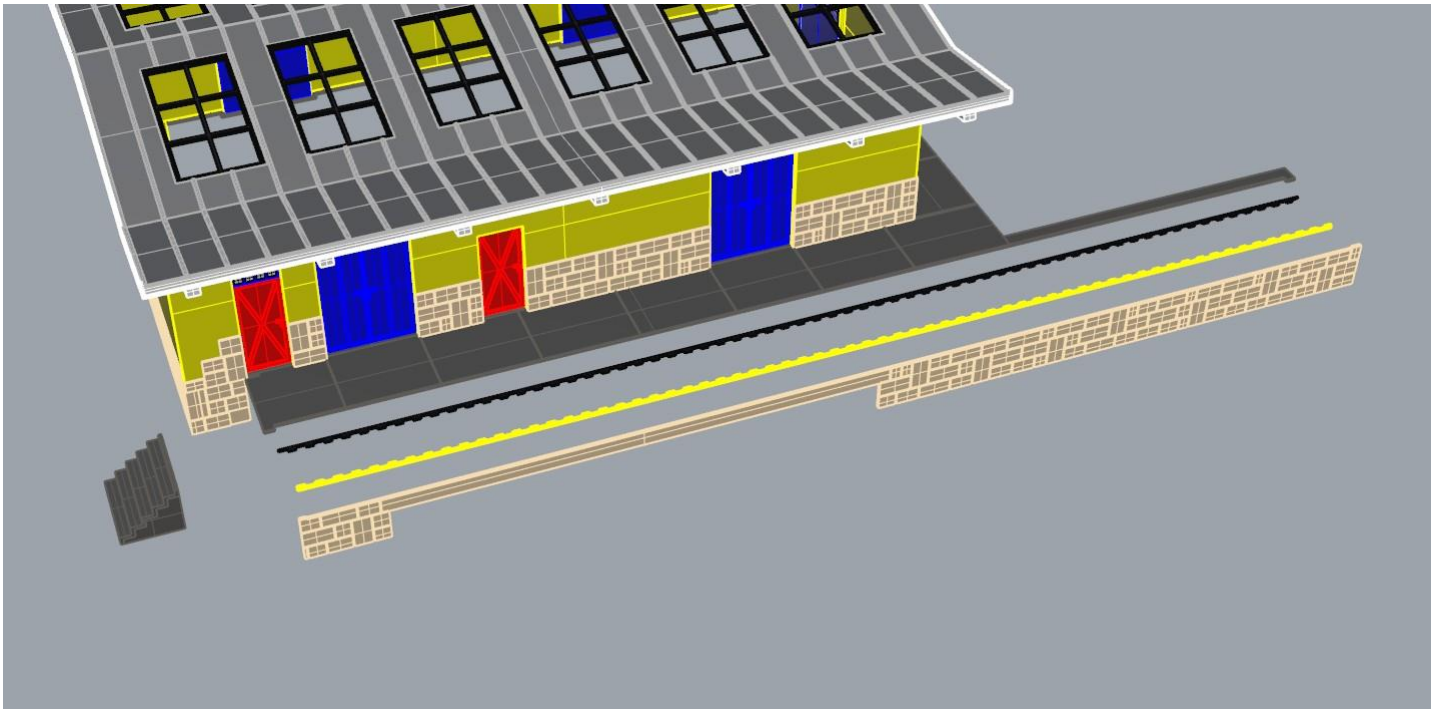
Folytassuk az épület aljával.

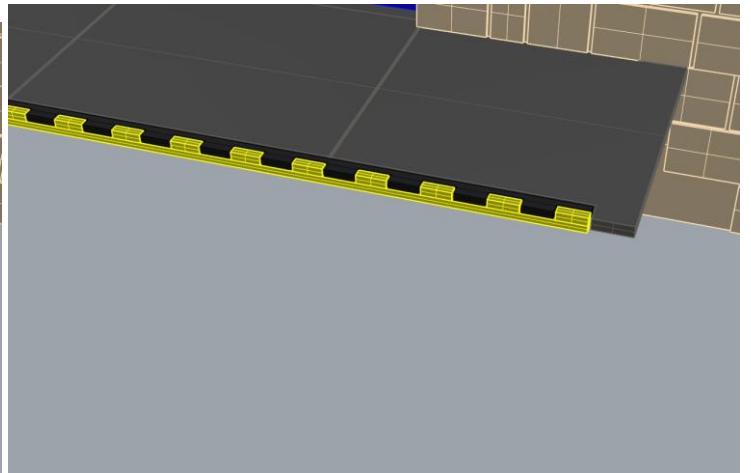
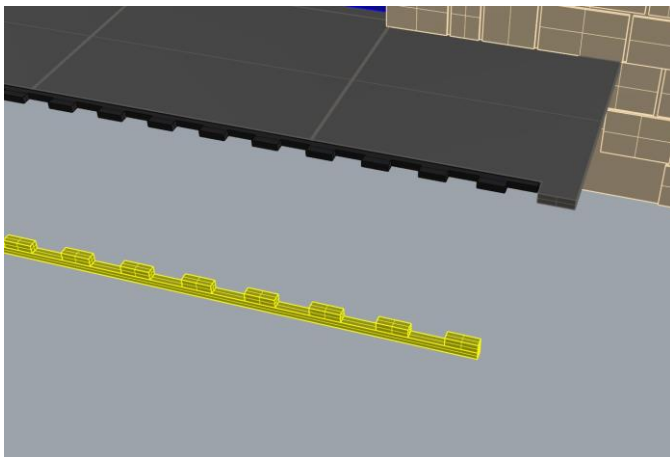
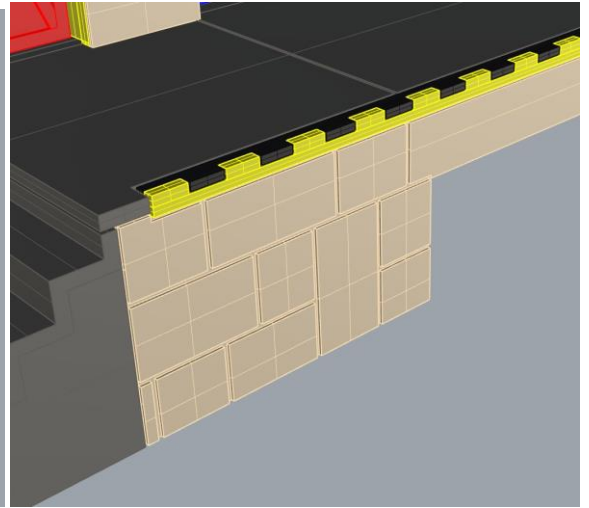
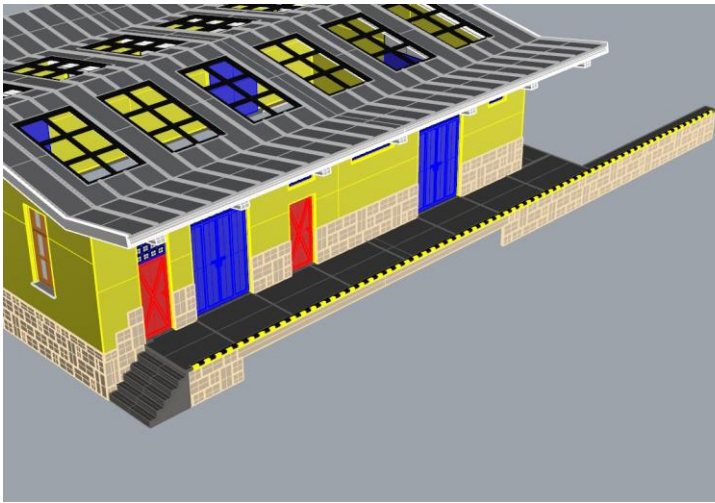




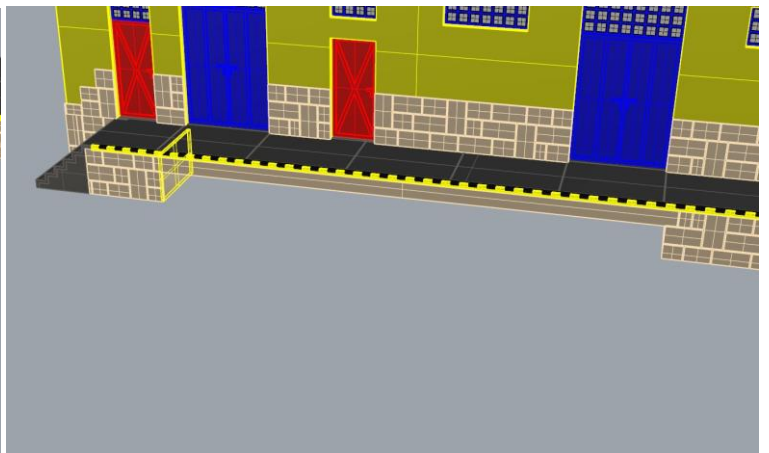
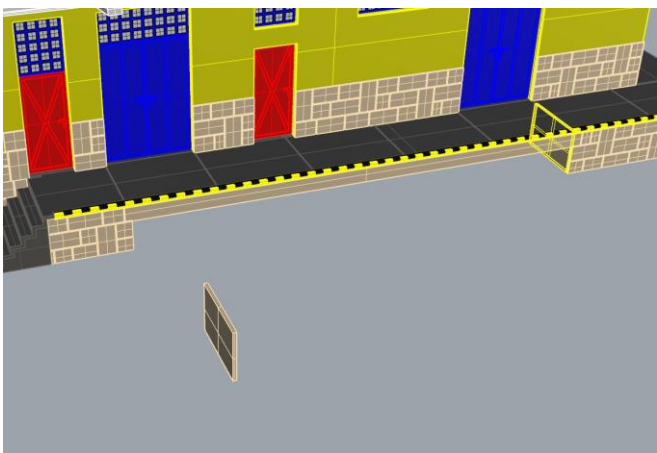
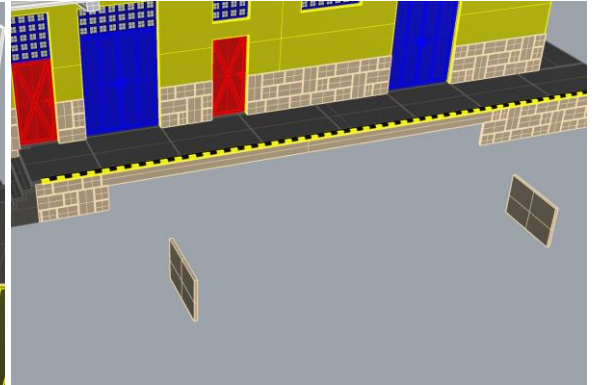
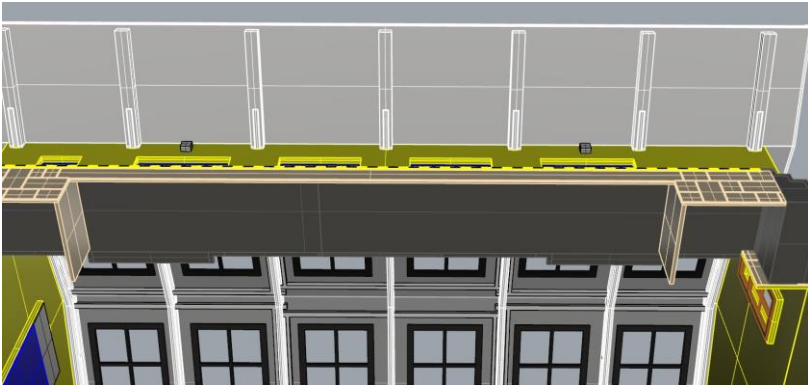
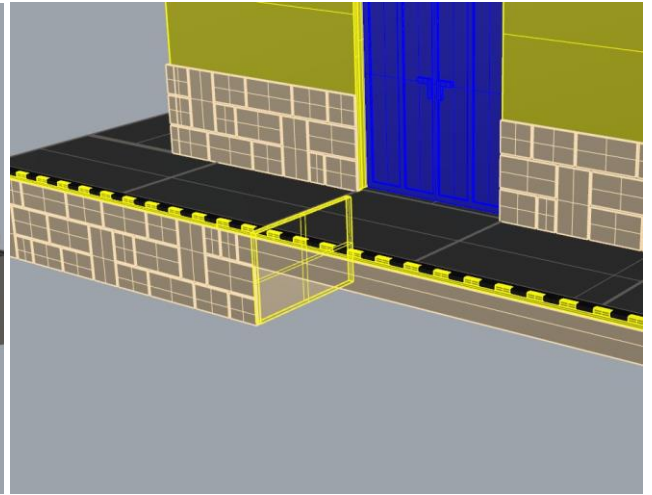
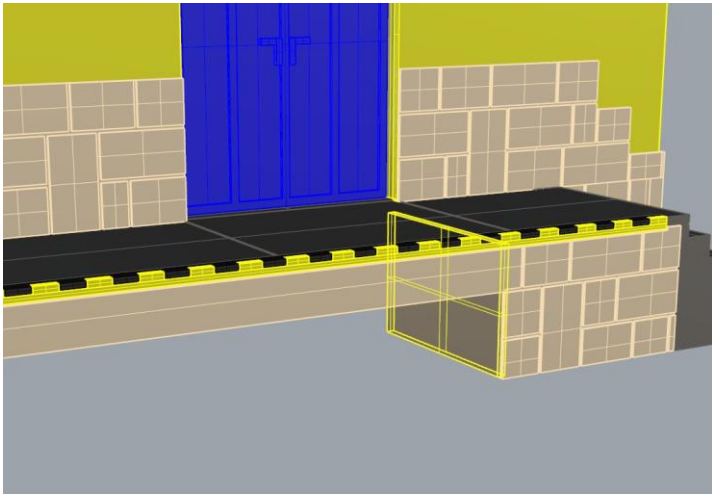
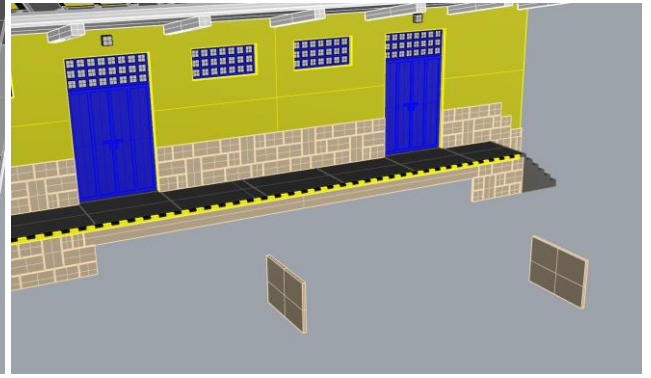
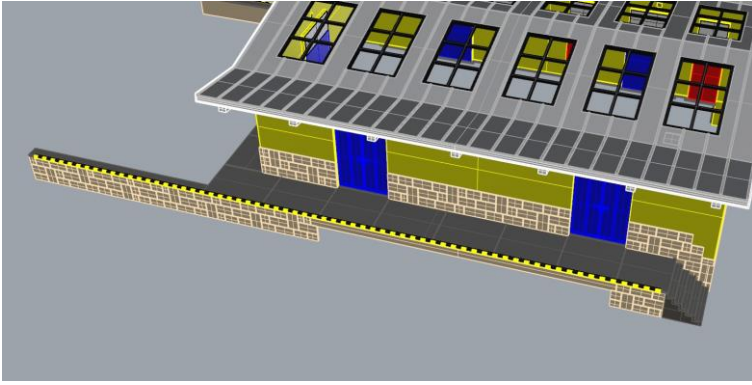


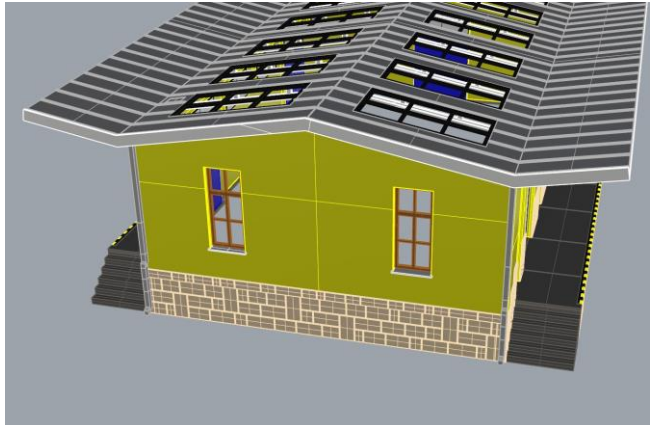
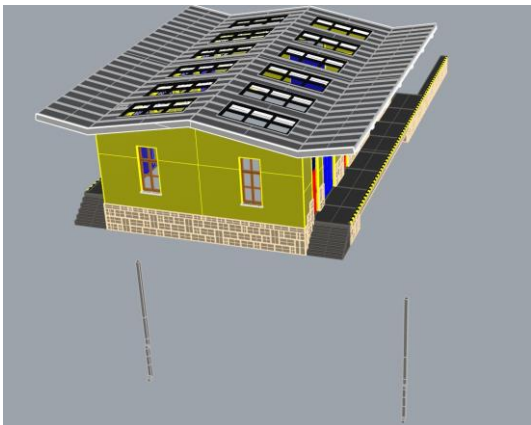
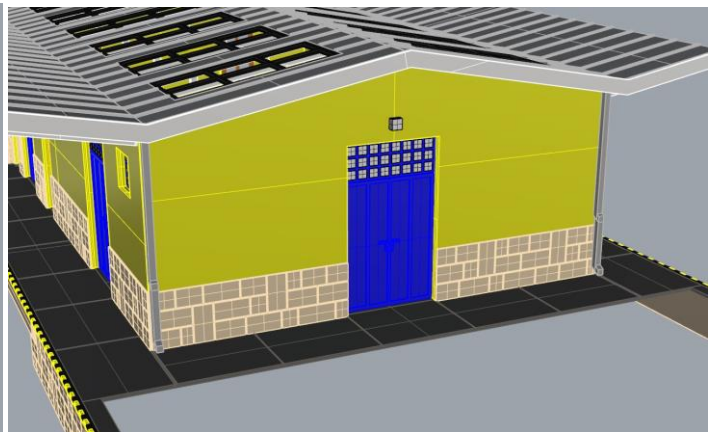
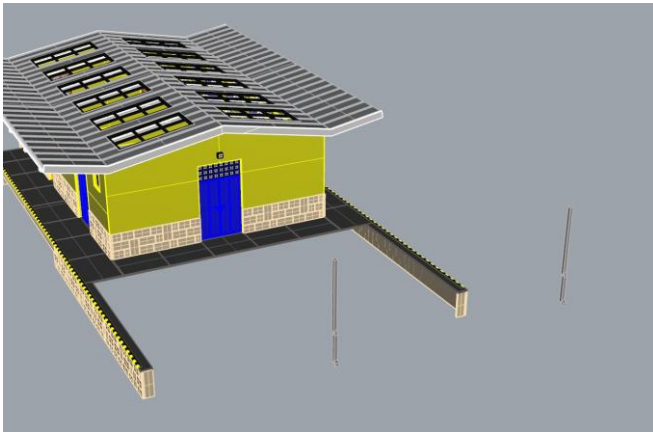
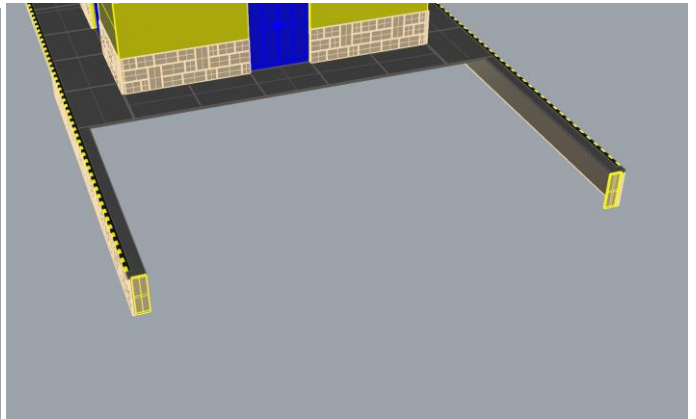
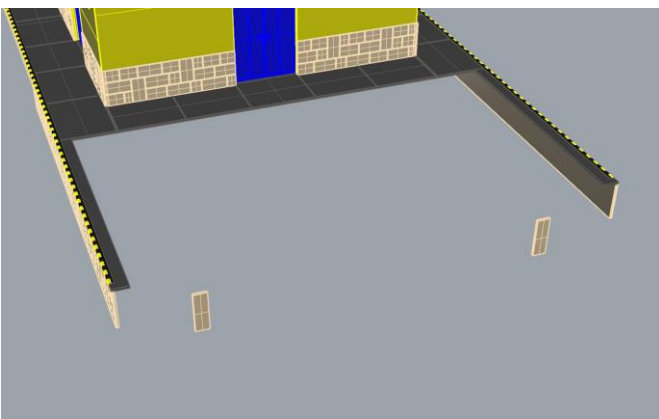
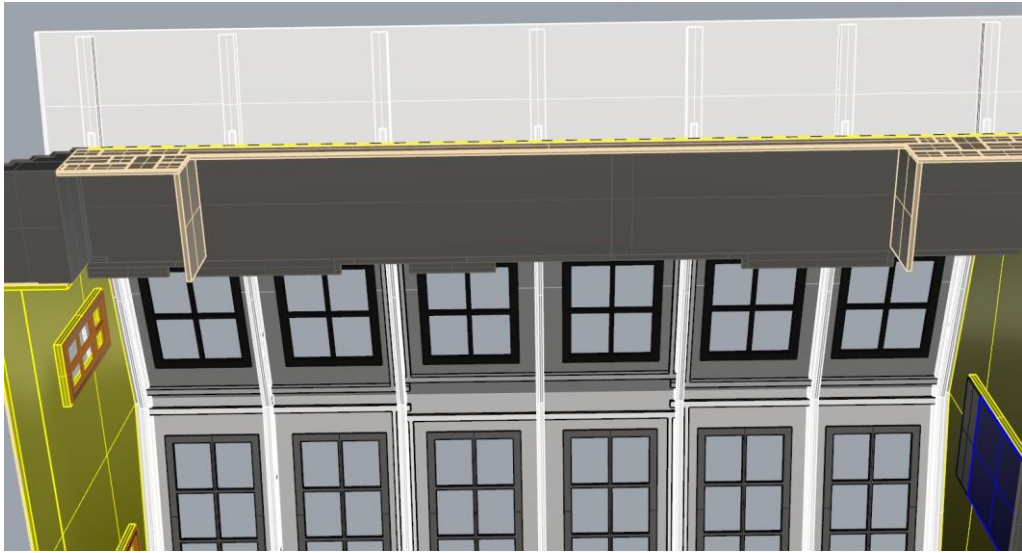


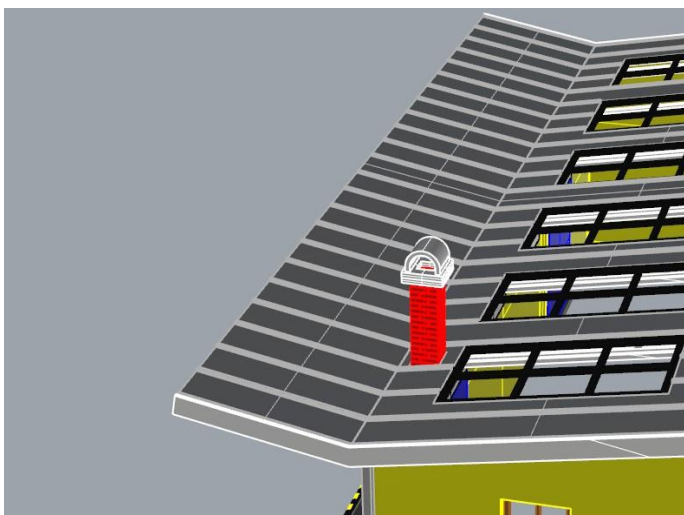
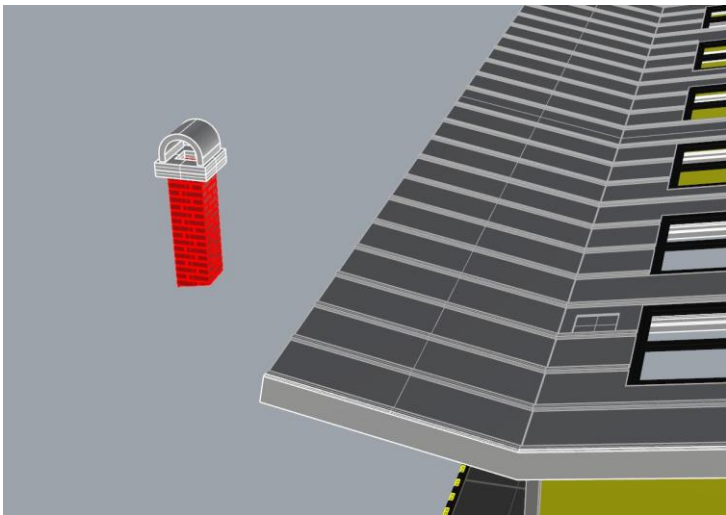
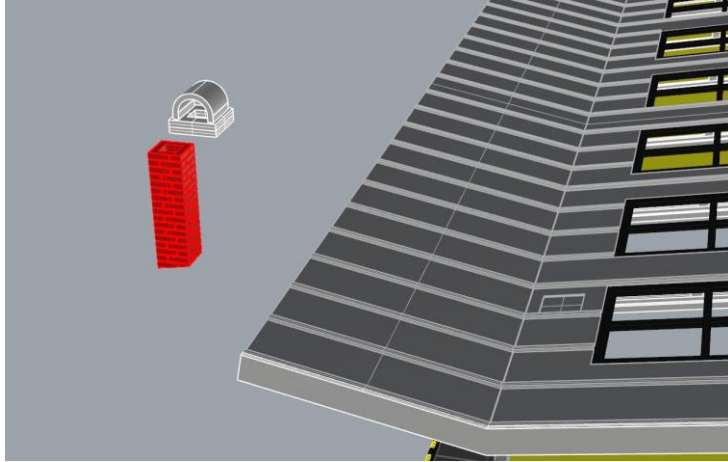
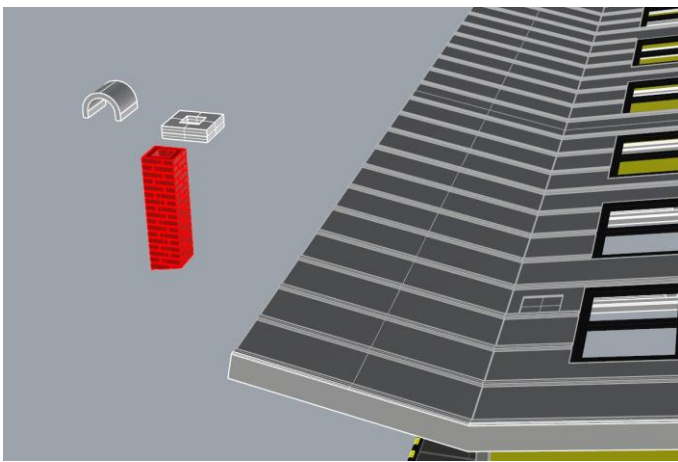












Készen is vagyunk.

