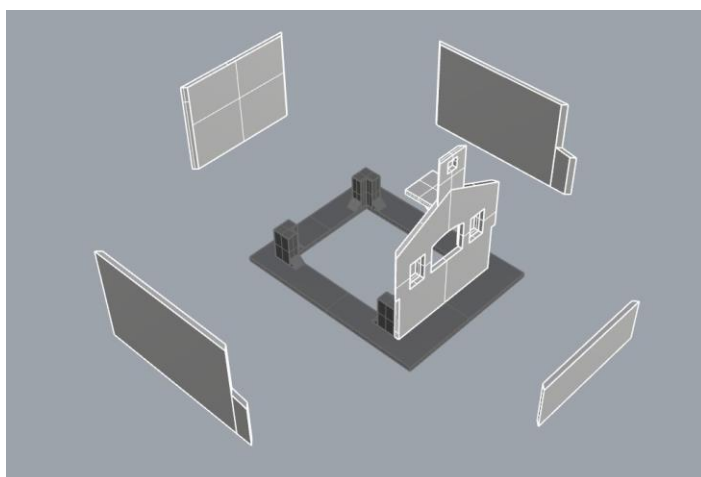
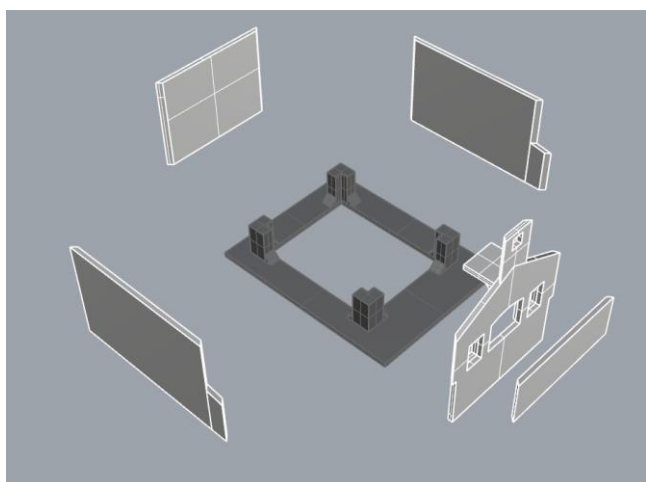
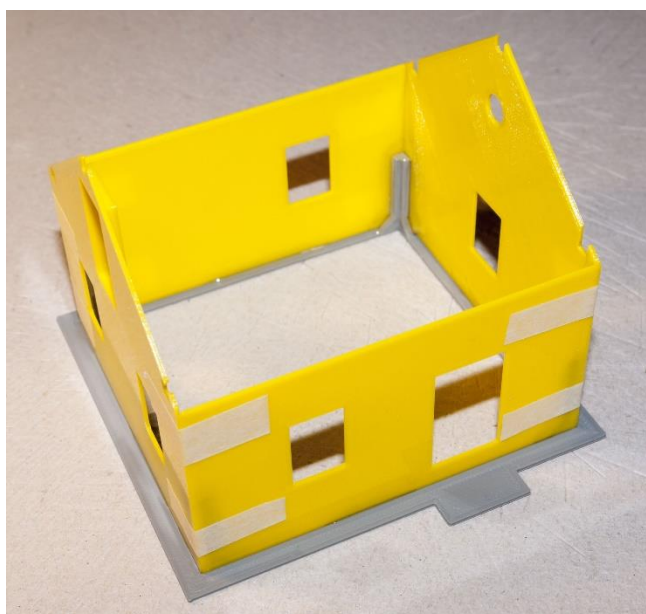


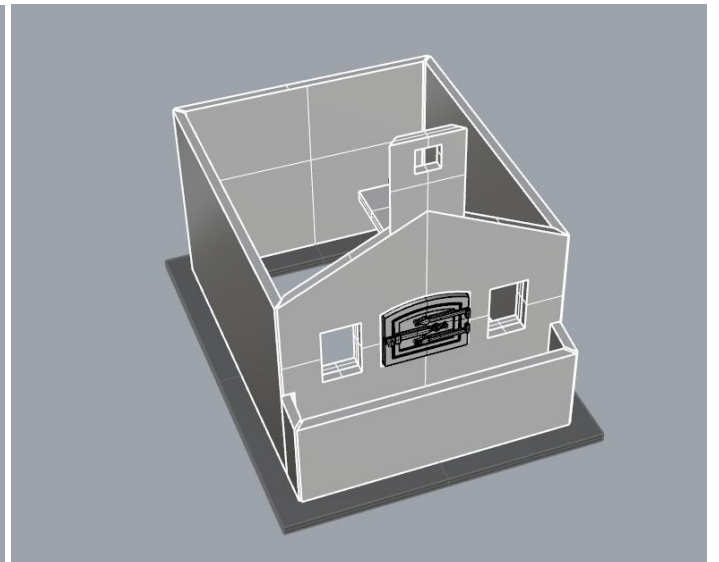
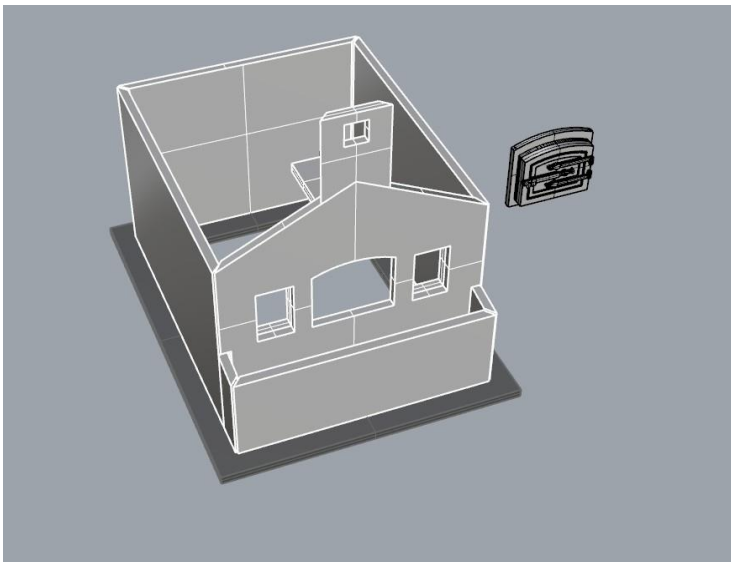
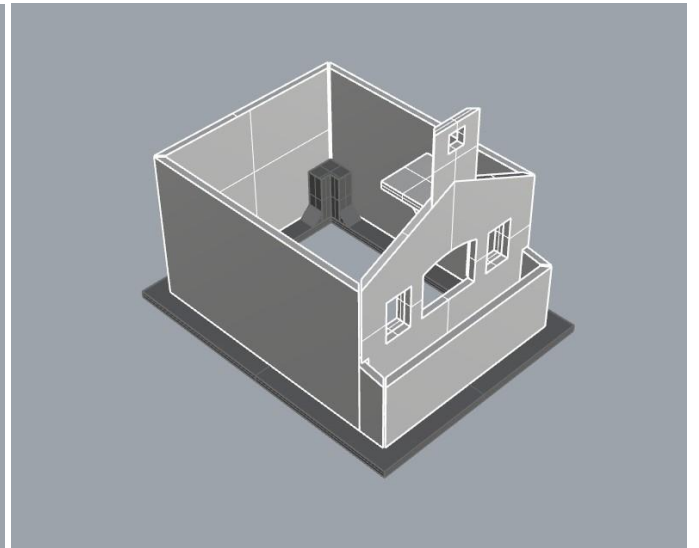
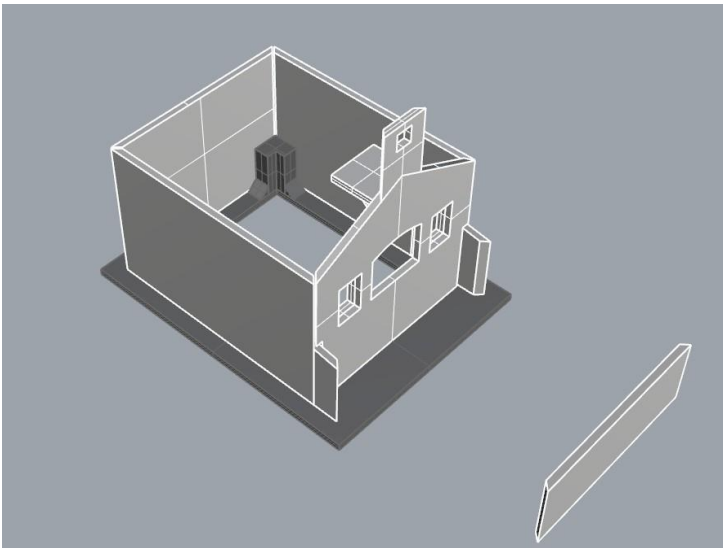
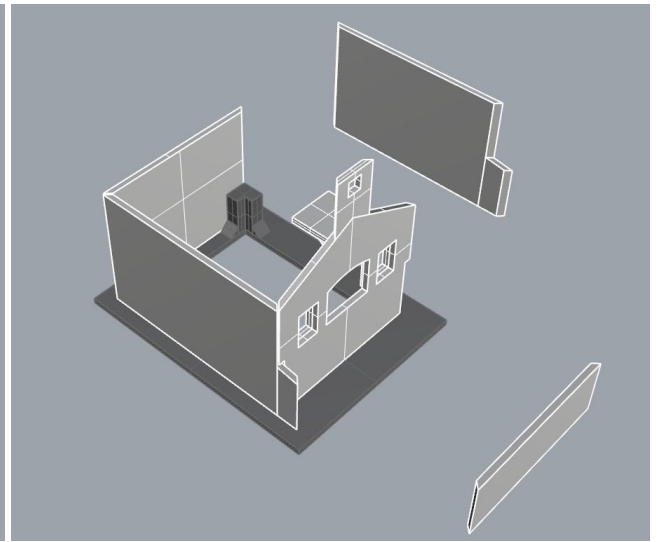
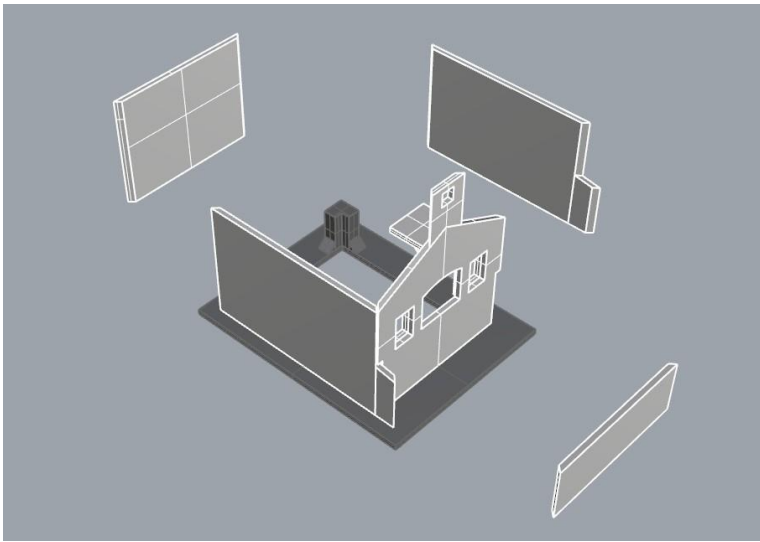
VAMITTOOLS vasúti kemence - 522-es típus

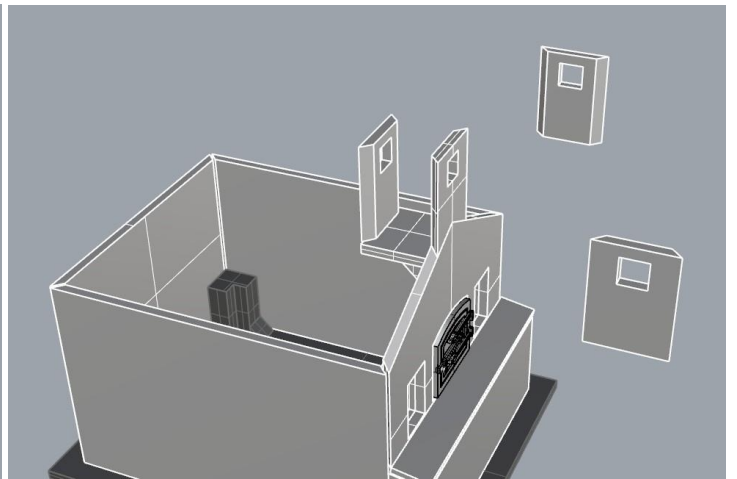
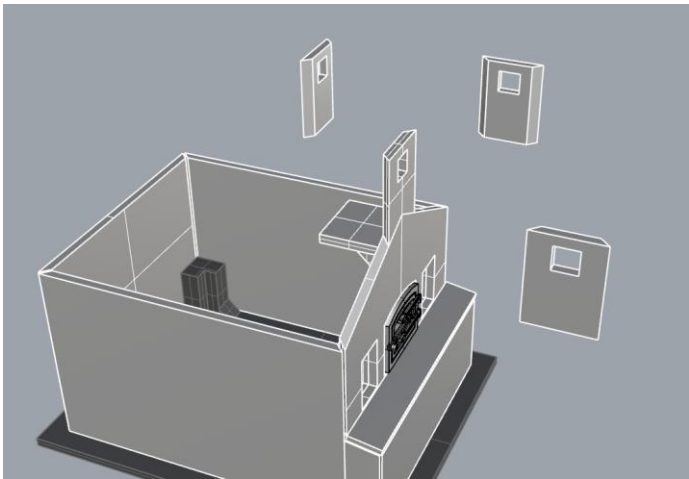
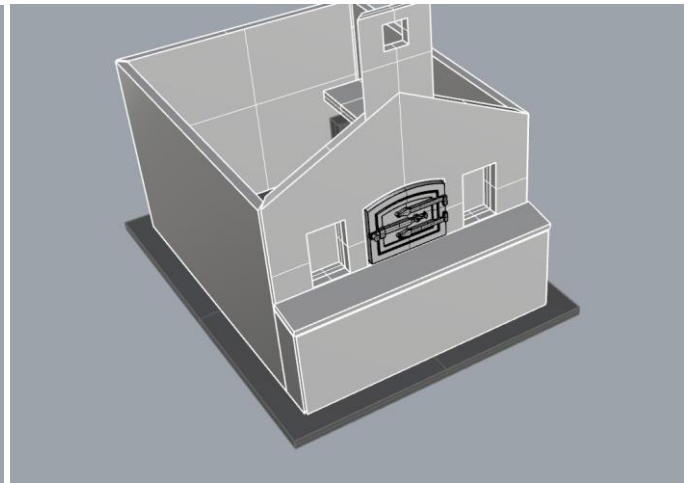
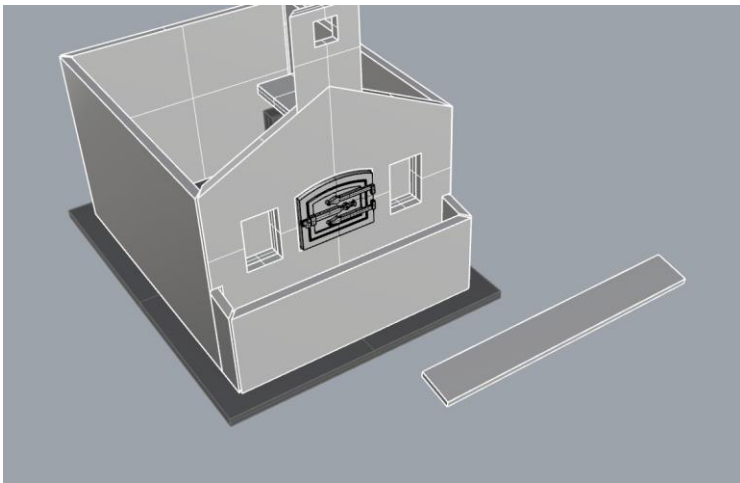
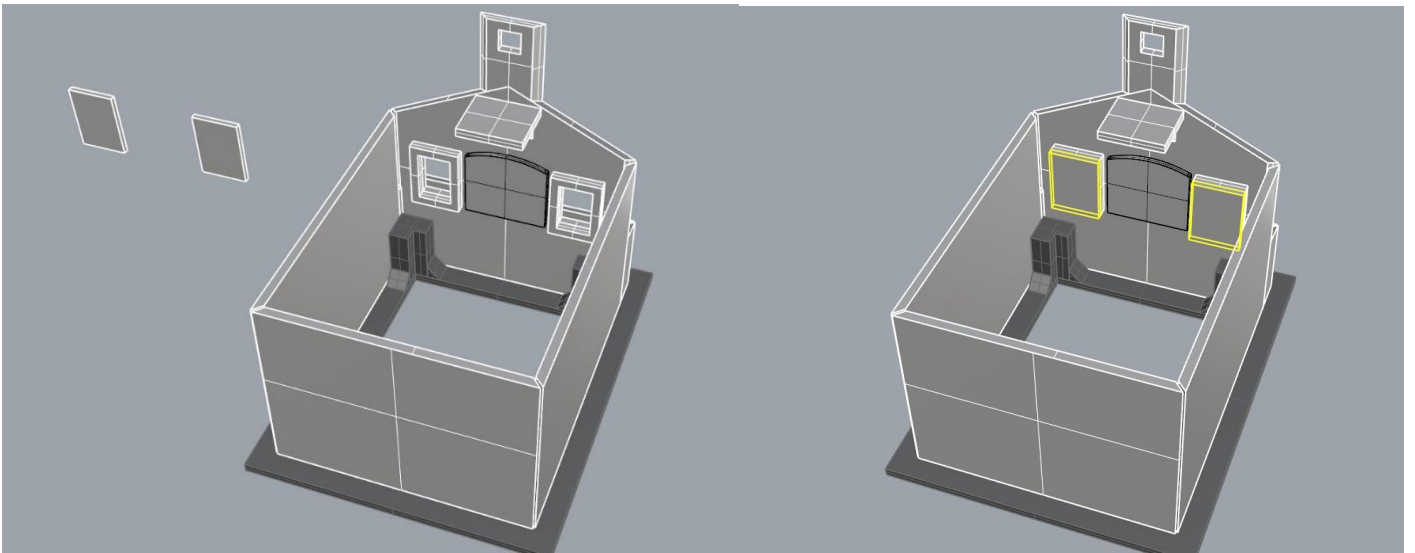


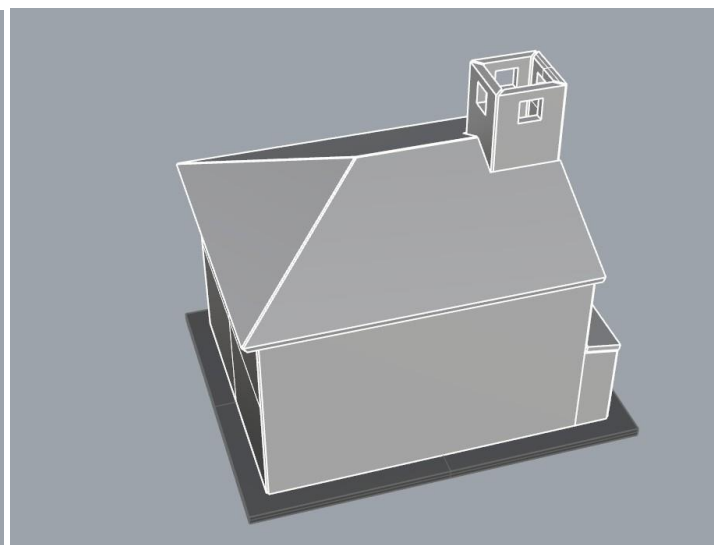
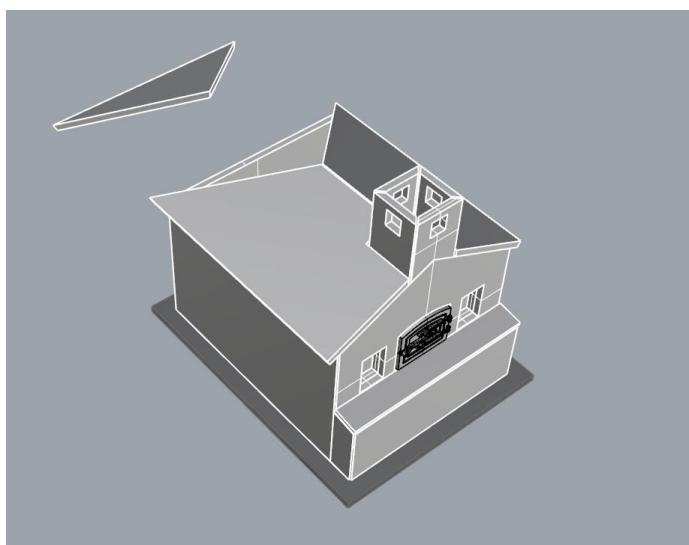
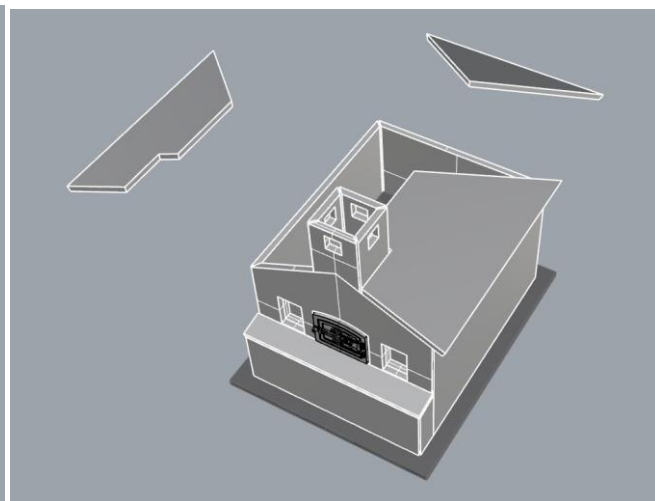
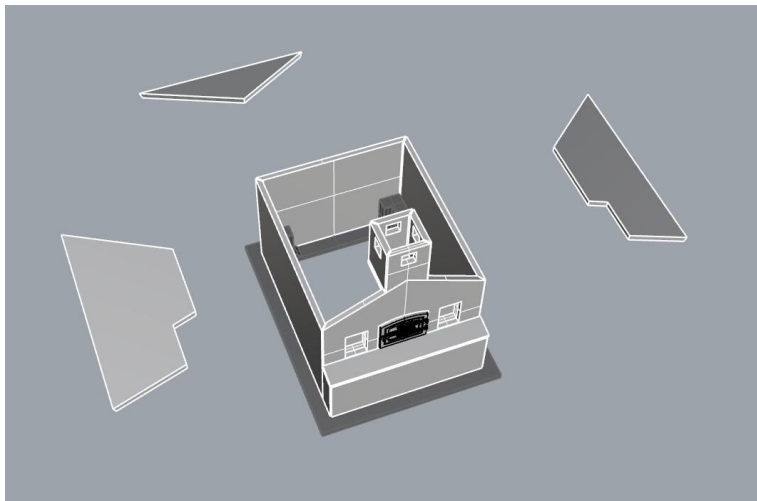
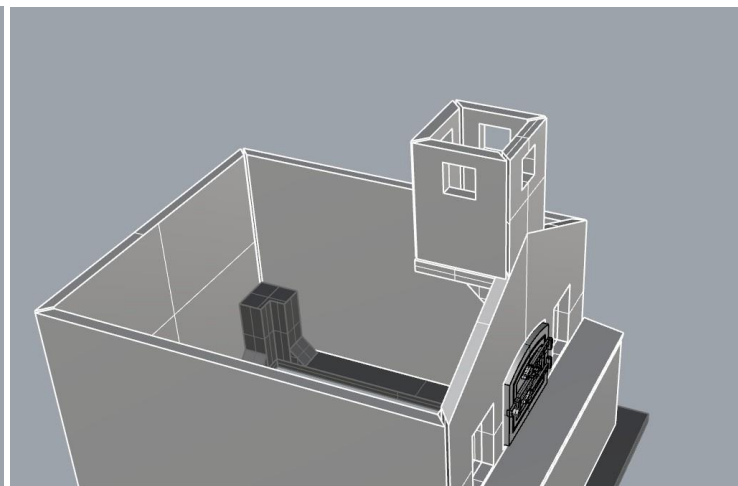
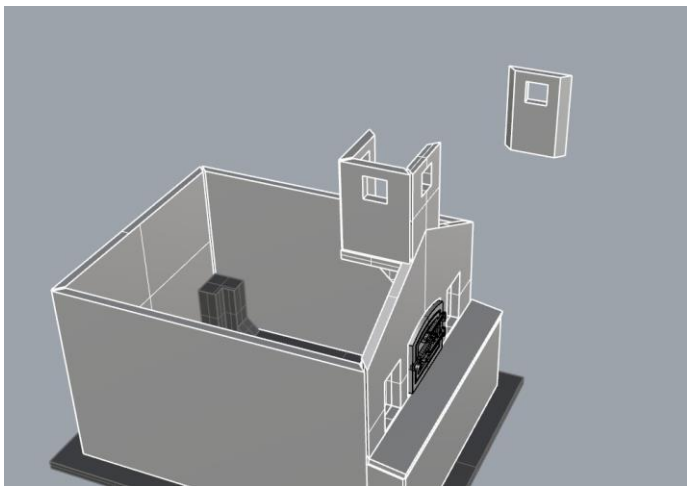
Elsőként próbáljuk ki, illeszkedik-e a kemenceajtó a falba. Ha esetleg kicsit szorul, éles pengével óvatosan tágítsuk ki a falban a nyílást.

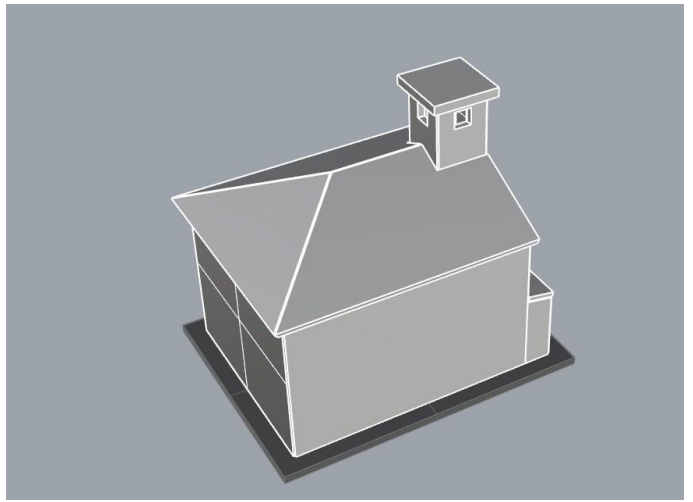
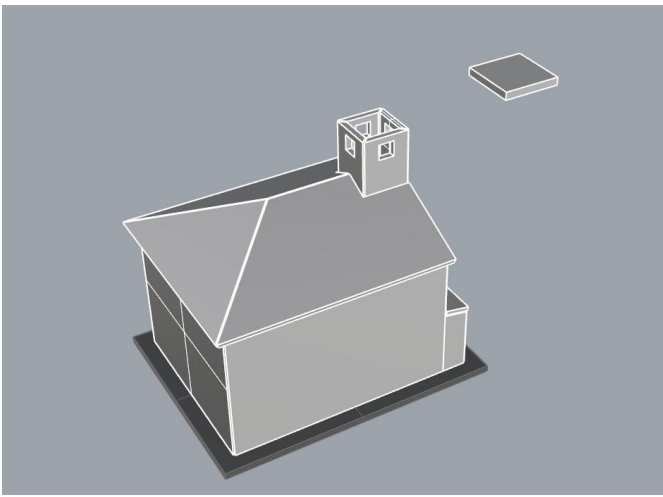
Kezdjük a falak összeragasztásával. Minden elemnél a sima és fényes oldal nézzen kifelé. Ragasztási segédletként a falakat ragasszuk össze ideiglenesen az alábbi képen látható módon Scotch Magic- vagy Krepp takarószalaggal, így a falak a későbbi ragasztás során nem fognak elmozdulni. Egy-egy saroknál akár több helyen is megragaszthatjuk a ragasztószalaggal, így még biztosabb tartást kapunk. (A kép illusztráció.)











Készen is vagyunk.

